

TRINITY MARINE - EX. WTC 3001-3002



KIRBY INLAND MARINE

CARGO

PIPING FLOW DIAGRAM

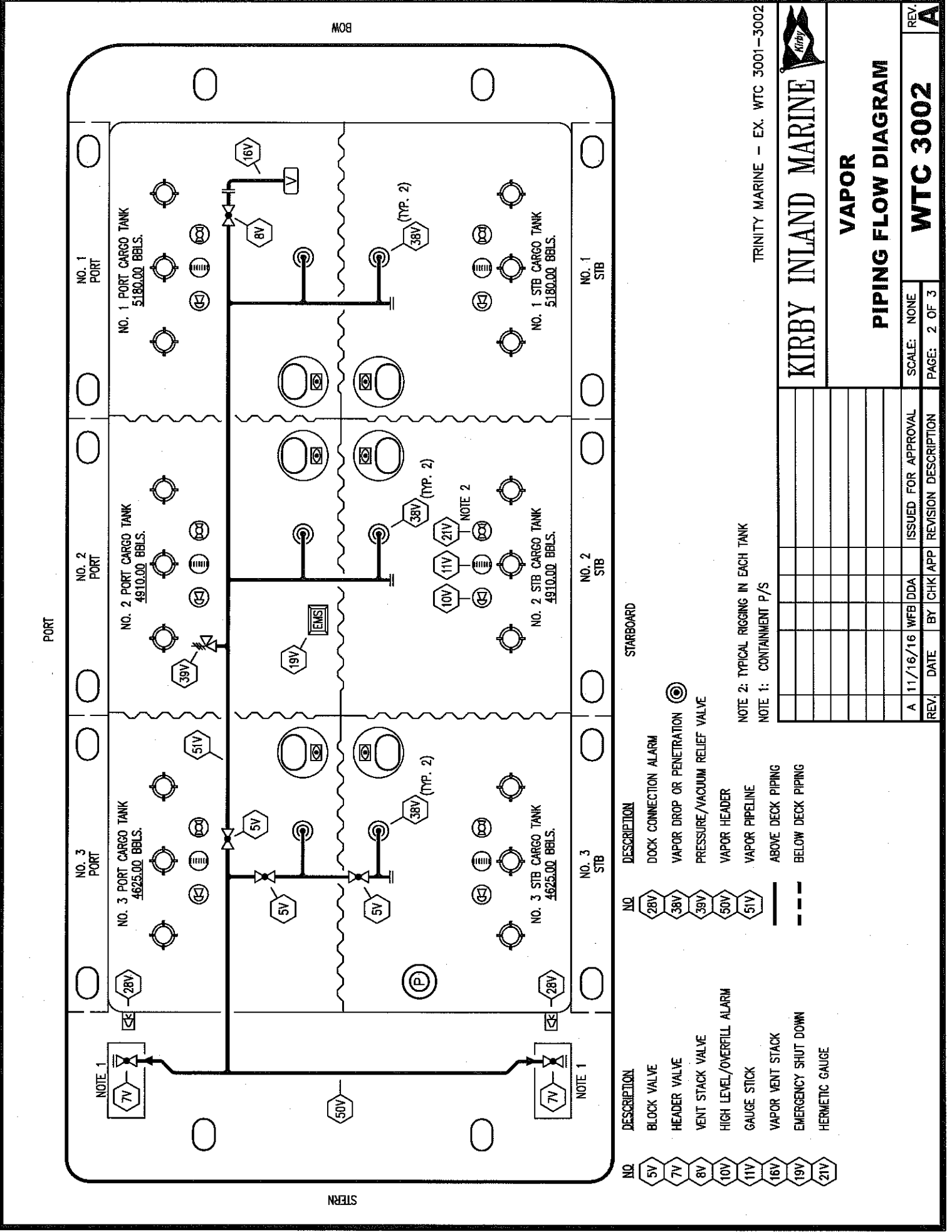
REV.	DATE	BY	CHK APP	ISSUED FOR APPROVAL	SCALE	PAGE
A	11/16/16	WFB	DDA		NONE	1 OF 3

WTC 3002

NOTE 1: CONTAINMENT P/S

STARBOARD

- | | | | |
|----|--------------------------|-----|--------------------|
| NO | DESCRIPTION | NO | DESCRIPTION |
| 1C | 8" CARGO TANK VALVE | 19C | 8" CARGO HEADER |
| 2C | 8" LOAD VALVE | 30C | 10" CARGO PIPELINE |
| 3C | 10" MASTER SUCTION VALVE | 31C | BYPASS VALVE |
| 4C | 8" DISCHARGE VALVE | 37C | CARGO DROP |
| 5C | 8" HEADER VALVE | --- | ABOVE DECK PIPING |
| 8C | 6" RELIEF VALVE | --- | BELOW DECK PIPING |
| 9C | 8" CHECK VALVE | | |



PORT

BOW

STERN

TRINITY MARINE - EX. WTC 3001-3002



VAPOR

PIPING FLOW DIAGRAM

REV. A	SCALE: NONE
REV. A	PAGE: 2 OF 3

STARBOARD

- | | |
|---------|------------------------------|
| NO. 5V | DESCRIPTION |
| NO. 7V | BLOCK VALVE |
| NO. 8V | HEADER VALVE |
| NO. 10V | VENT STACK VALVE |
| NO. 11V | HIGH LEVEL/OVERFILL ALARM |
| NO. 16V | GAUGE STICK |
| NO. 19V | VAPOR VENT STACK |
| NO. 21V | EMERGENCY SHUT DOWN |
| | HERMETIC GAUGE |
| NO. 28V | DOCK CONNECTION ALARM |
| NO. 38V | VAPOR DROP OR PENETRATION |
| NO. 39V | PRESSURE/VACUUM RELIEF VALVE |
| NO. 50V | VAPOR HEADER |
| NO. 51V | VAPOR PIPELINE |
| --- | ABOVE DECK PIPING |
| --- | BELOW DECK PIPING |

NOTE 2: TYPICAL RIGGING IN EACH TANK
 NOTE 1: CONTAINMENT P/S

REV.	DATE	BY	CHK APP	ISSUED FOR APPROVAL	REVISION DESCRIPTION
A	11/16/16	WFB	DDA		

NO. 1 PORT CARGO TANK
5180.00 BBLs.

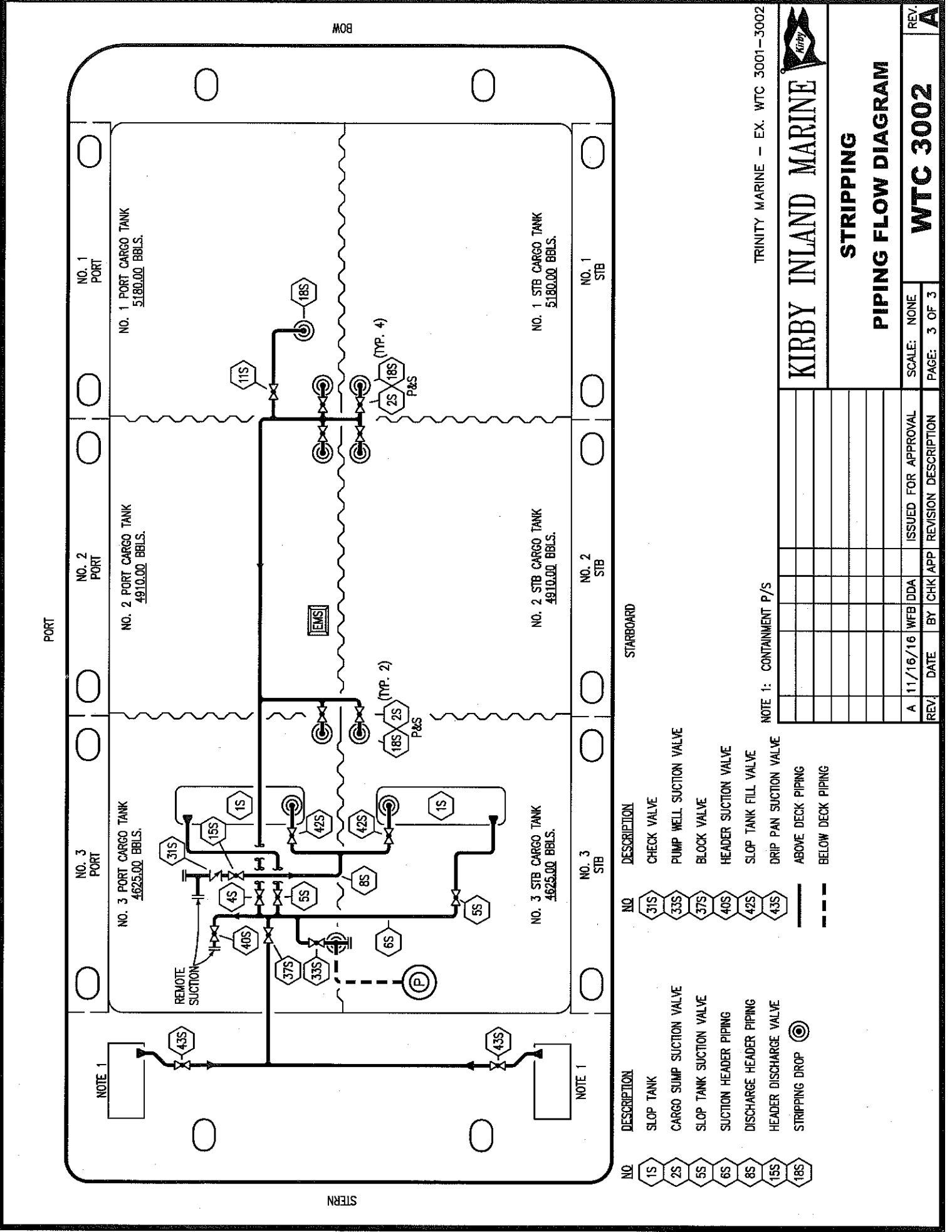
NO. 2 PORT CARGO TANK
4910.00 BBLs.

NO. 3 PORT CARGO TANK
4625.00 BBLs.

NO. 1 STB CARGO TANK
5180.00 BBLs.

NO. 2 STB CARGO TANK
4910.00 BBLs.

NO. 3 STB CARGO TANK
4625.00 BBLs.



TRINITY MARINE - EX. WTC 3001-3002

KIRBY INLAND MARINE

**STRIPPING
PIPING FLOW DIAGRAM**

REV. A	SCALE: NONE
ISSUED FOR APPROVAL	WFB DDA
REVISION DESCRIPTION	BY CHK APP
PAGE: 3 OF 3	DATE

NOTE 1: CONTAINMENT P/S

STARBOARD

- | | |
|-----|--------------------------|
| NO | DESCRIPTION |
| 1S | SLOP TANK |
| 2S | CARGO SUMP SUCTION VALVE |
| 3S | SLOP TANK SUCTION VALVE |
| 4S | SUCTION HEADER PIPING |
| 5S | DISCHARGE HEADER PIPING |
| 6S | HEADER DISCHARGE VALVE |
| 8S | STRIPPING DROP |
| 11S | CHECK VALVE |
| 15S | PUMP WELL SUCTION VALVE |
| 18S | BLOCK VALVE |
| 25S | HEADER SUCTION VALVE |
| 31S | SLOP TANK FILL VALVE |
| 33S | DRIP PAN SUCTION VALVE |
| 37S | ABOVE DECK PIPING |
| 40S | BELOW DECK PIPING |
| 42S | |
| 43S | |

BOX

STERN