





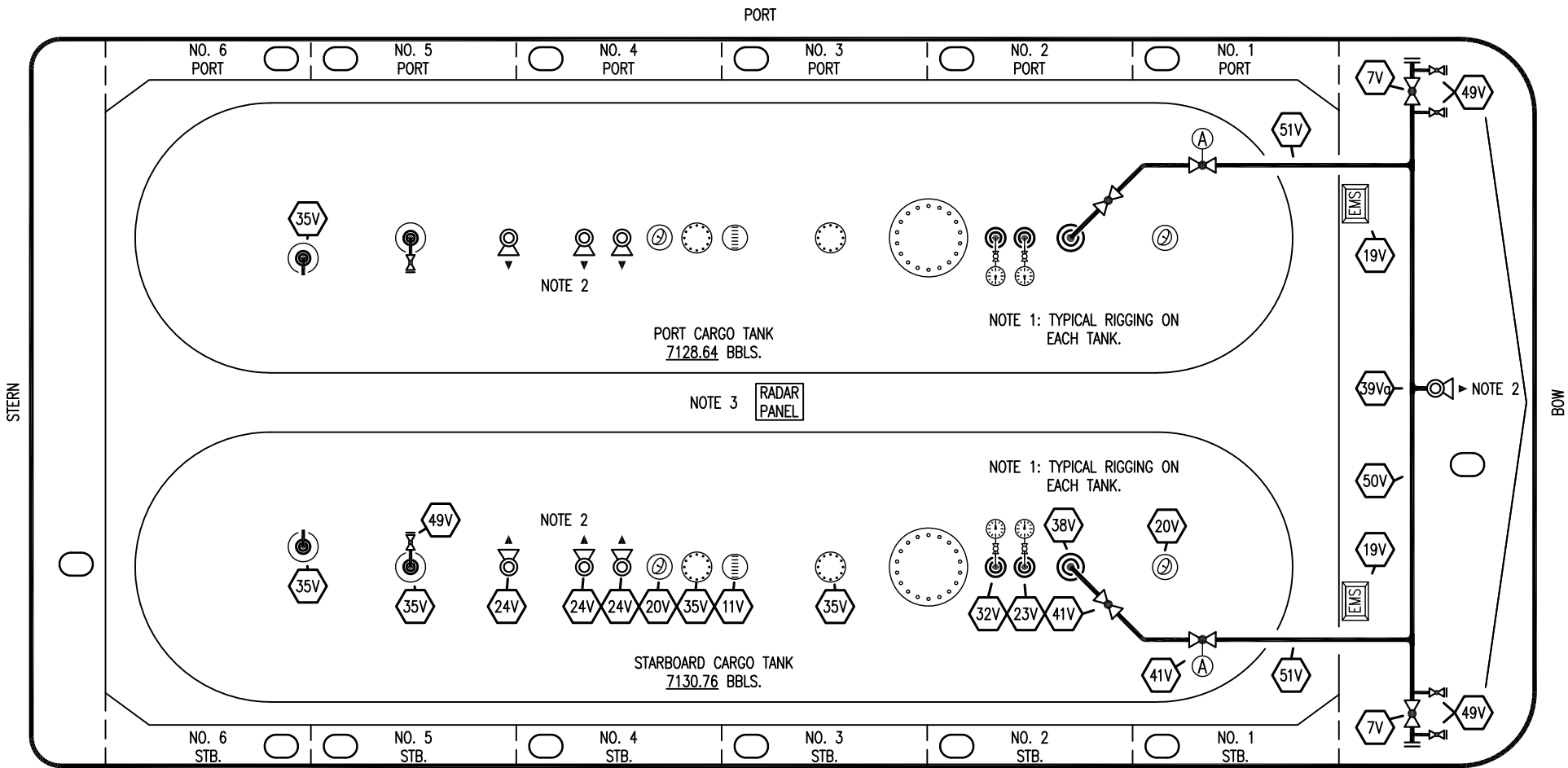
- | NO                                                                                  | DESCRIPTION                                                                                       |
|-------------------------------------------------------------------------------------|---------------------------------------------------------------------------------------------------|
| 1C                                                                                  | 4" CARGO TANK VALVE                                                                               |
| 5C                                                                                  | 6" HEADER VALVE                                                                                   |
| 8C                                                                                  | 3 RELIEF VALVE/4" STACK                                                                           |
| 19C                                                                                 | 6" CARGO HEADER                                                                                   |
| 26C                                                                                 | DRAIN (BLEED) VALVE                                                                               |
| 30C                                                                                 | 4" CARGO PIPELINE                                                                                 |
| 37C                                                                                 | 4" CARGO DROP  |
|  | HYDRAULIC ACTUATED AUTOMATIC VALVE                                                                |
|  | ABOVE DECK PIPING                                                                                 |

NOTE 1: P/V VALVES VENTED TO ATMOSPHERE  
 NOTE 2: 2" CONDUIT BELOW GRATE FOR EMS.

INGALLS IRON - EX: N/A

REV.	DATE	BY	CHK	APP	REVISION DESCRIPTION
1	06/19/24	AC	DDA	DAR	REVISED PER CLIENT COMMENTS
0	02/18/13	KS	DDA		ISSUED FOR REVIEW

<b>KIRBY INLAND MARINE</b> 	
<b>CARGO</b>	
<b>PIPING FLOW DIAGRAM</b>	
SCALE: NONE	<b>USL 140</b>
PAGE: 1 OF 3	<b>REV. 1</b>



PORT CARGO TANK  
7128.64 BBLs.

STARBOARD CARGO TANK  
7130.76 BBLs.

RADAR  
PANEL

NO	DESCRIPTION	NO	DESCRIPTION
7V	4" HEADER VALVE	50V	4" VAPOR HEADER
19V	EMERGENCY SHUT DOWN STATIONS	51V	3" VAPOR PIPELINE
20V	RADAR GAUGING	53V	HIGH LEVEL GAUGE
23V	PRESSURE GAUGE	54V	LOW LEVEL GAUGE
32V	TEMPERATURE GAUGE 0-160 F	(A)	AIR ACTUATED VALVE
35V	SPARE (NOZZLE)		
38V	VAPOR DROP OR PENETRATION (C)		
39V	PRESSURE/VACUUM VALVE @ 260 PSI		
39Va	4" STACK-3 PRESSURE/VACUUM VALVE		
41V	3" VAPOR TANK VALVE		

NOTE 1: TYPICAL RIGGING ON EACH TANK  
 NOTE 2: P/V VALVES VENTED TO ATMOSPHERE  
 NOTE 3: 2" CONDUIT BELOW GRATE FOR EMS.

INGALLS IRON - EX: N/A

REV.	DATE	BY	CHK	APP	REVISION DESCRIPTION
1	06/19/24	AC	DDA	DAR	REVISED PER CLIENT COMMENTS
0	02/18/13	KS	DDA		ISSUED FOR REVIEW

# KIRBY INLAND MARINE

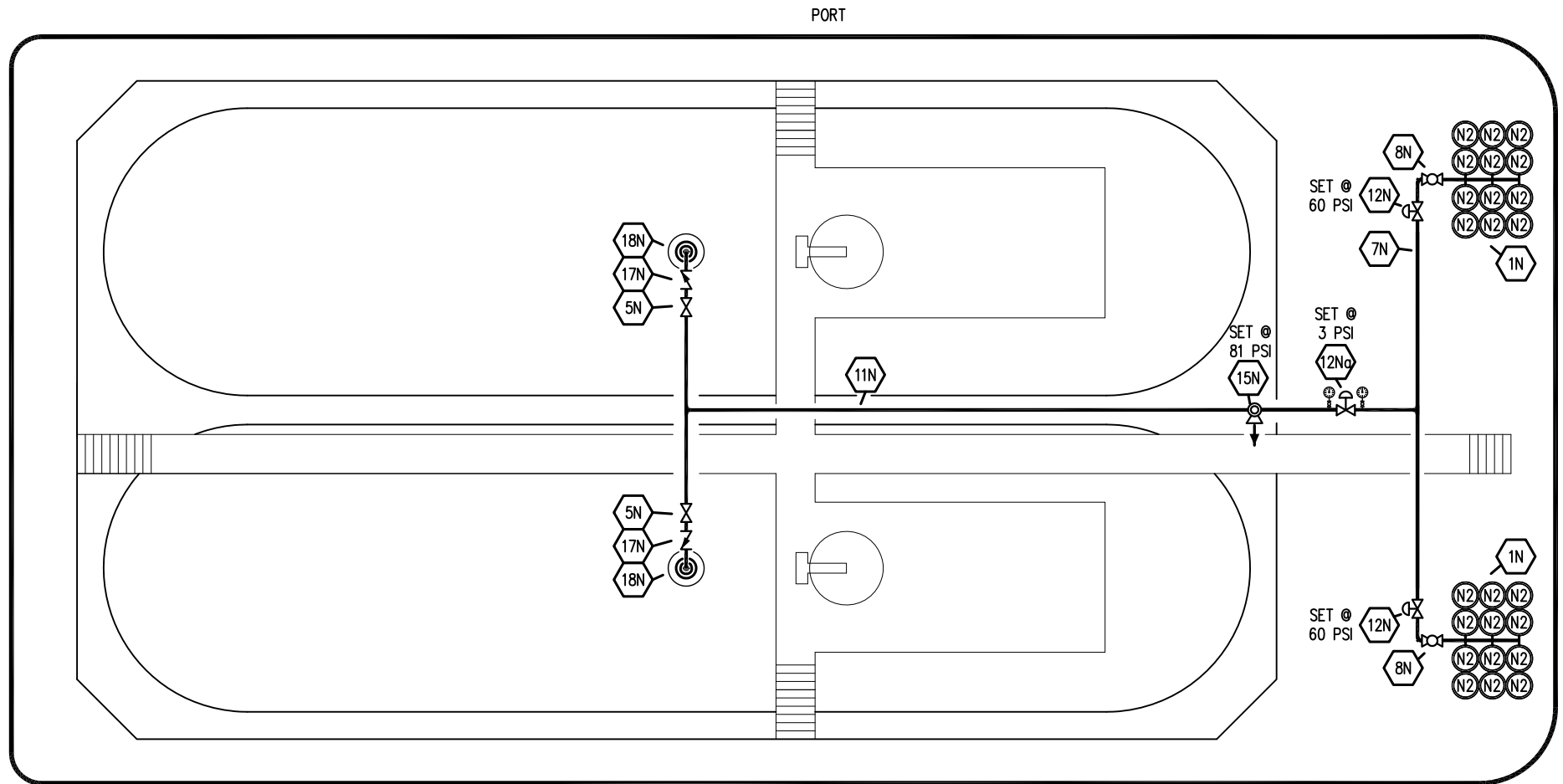
## VAPOR PIPING FLOW DIAGRAM



SCALE: NONE

# USL 140


PAGE: 2 OF 3

REV. 1



- | NO                                                                                  | DESCRIPTION                                                                                             |
|-------------------------------------------------------------------------------------|---------------------------------------------------------------------------------------------------------|
| 1N                                                                                  | NITROGEN BOTTLE RACK (12 PK.)                                                                           |
| 5N                                                                                  | N2 SUPPLY VALVE                                                                                         |
| 7N                                                                                  | NITROGEN HEADER                                                                                         |
| 8N                                                                                  | N2 REGULATOR CONTROL VALVE                                                                              |
| 11N                                                                                 | NITROGEN PIPELINE                                                                                       |
| 12N                                                                                 | HARRIS NITROGEN REGULATOR                                                                               |
| 12Ng                                                                                | FISHER NITROGEN REGULATOR                                                                               |
| 15N                                                                                 | N2 RELIEF VALVE                                                                                         |
| 17N                                                                                 | N2 CHECK VALVE                                                                                          |
| 18N                                                                                 | N2 TANK PENETRATION  |
|  | ABOVE DECK PIPING                                                                                       |

REV.	DATE	BY	CHK	APP	REVISION DESCRIPTION
1	06/19/24	AC	DDA	DAR	REVISED PER CLIENT COMMENTS
0	02/18/13	KS	DDA		ISSUED FOR REVIEW

<b>KIRBY INLAND MARINE</b> 	
<b>NITROGEN PIPING FLOW DIAGRAM</b>	
SCALE: NONE	<b>USL 140</b>
PAGE: 3 OF 3	REV. <b>1</b>