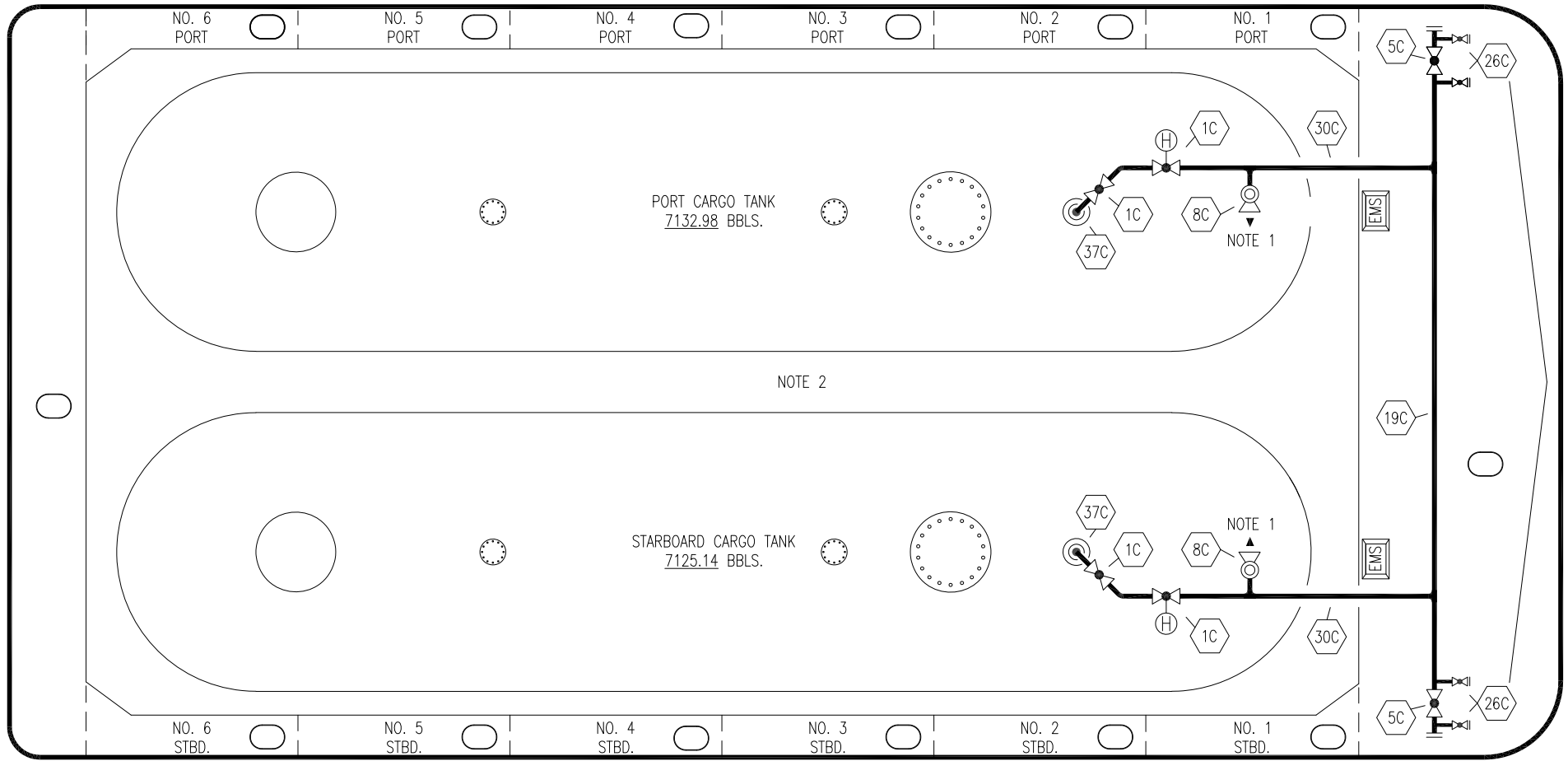


STERN

PORT

BOW



PORT CARGO TANK
7132.98 BBLs.



STARBOARD CARGO TANK
7125.14 BBLs.

NOTE 2

NOTE 1

NOTE 1


STARBOARD

- | | |
|---|--|
| NO | DESCRIPTION |
| 1C | CARGO TANK VALVE |
| 5C | HEADER VALVE |
| 8C | RELIEF VALVE/STACK |
| 19C | CARGO HEADER |
| 26C | DRAIN (BLEED) VALVE |
| 30C | CARGO PIPELINE |
| 37C | CARGO DROP  |
| H | HYDRAULIC ACTUATED AUTOMATIC VALVE |
|  | ABOVE DECK PIPING |

NOTE 1: P/V VALVES VENTED TO ATMOSPHERE
NOTE 2: 2" CONDUIT BELOW GRATE FOR EMS.

INGALLS IRON -- EX: N/A

1	06/03/22	MRV	DDA	DAR	REVISED PER CLIENT COMMENTS
0	04/13/12	DCB	DDA		ISSUED FOR REVIEW
REV.	DATE	BY	CHK	APP	REVISION DESCRIPTION

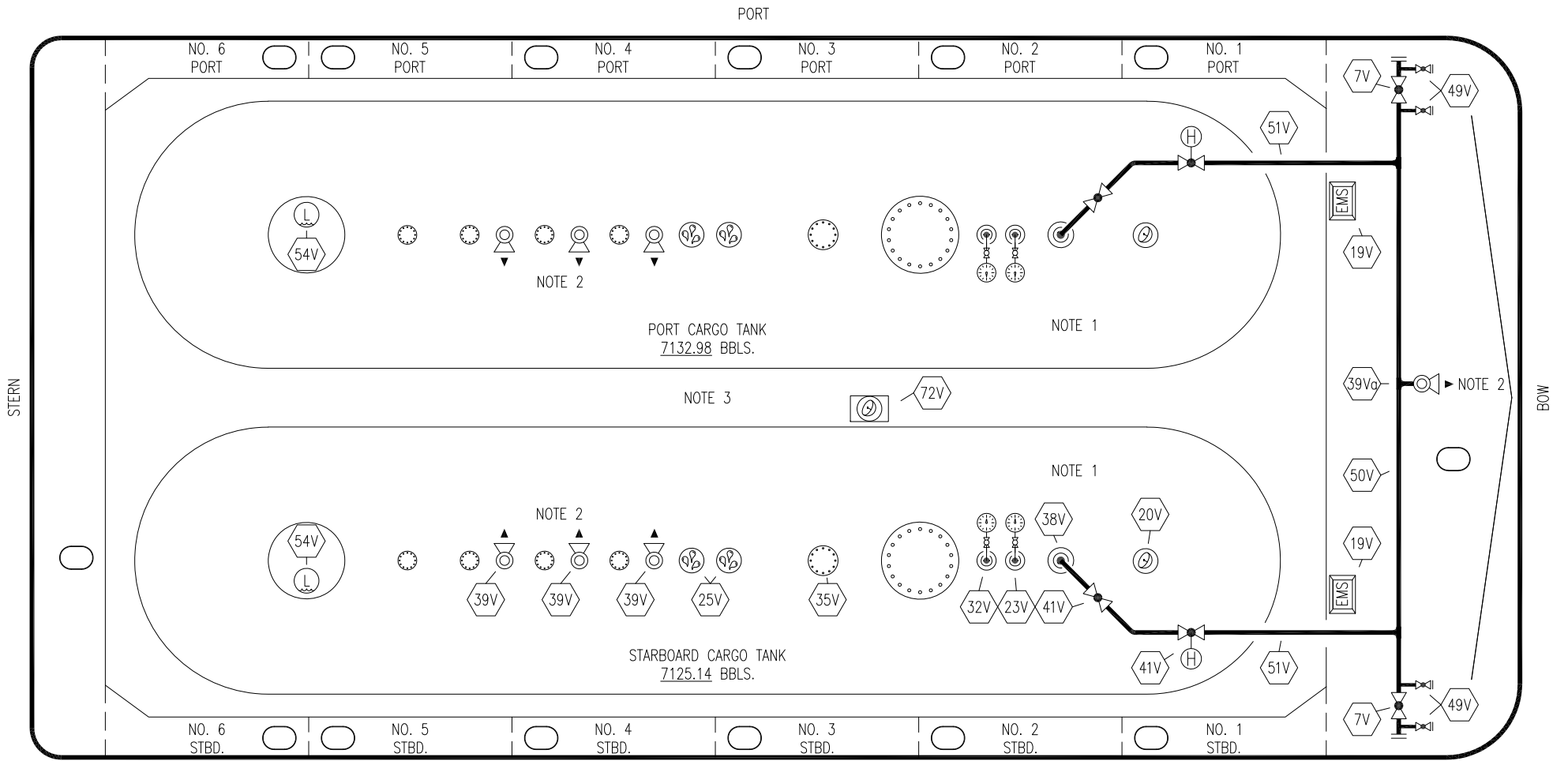
KIRBY INLAND MARINE 

CARGO

PIPING FLOW DIAGRAM

SCALE: NONE	<h1 style="margin: 0;">USL 139</h1>
PAGE: 1 OF 3	

REV. **1**



NO	DESCRIPTION	NO	DESCRIPTION
7V	HEADER VALVE	41V	VAPOR TANK VALVE
11V	GAUGE STICK (MIDDLE)	50V	VAPOR HEADER
19V	EMERGENCY SHUT DOWN STATIONS	51V	VAPOR PIPELINE
20V	RADAR GAUGING	53V	HIGH LEVEL GAUGE
23V	PRESSURE GAUGE	54V	LOW LEVEL GAUGE
25V	SPEW TUBES	72V	SOLAR ALARM PANEL
32V	TEMPERATURE GAUGE	—	—
35V	SPARE (NOZZLE)	(A)	AIR ACTUATED VALVE
38V	VAPOR DROP OR PENETRATION (⊙)		
39V	PRESSURE/VACUUM VALVE		
39Va	STACK-PRESSURE/VACUUM VALVE		

STARBOARD

NOTE 1: TYPICAL RIGGING ON EACH TANK

NOTE 2: P/V VALVES VENTED TO ATMOSPHERE

NOTE 3: CONDUIT BELOW GRATE FOR EMS.

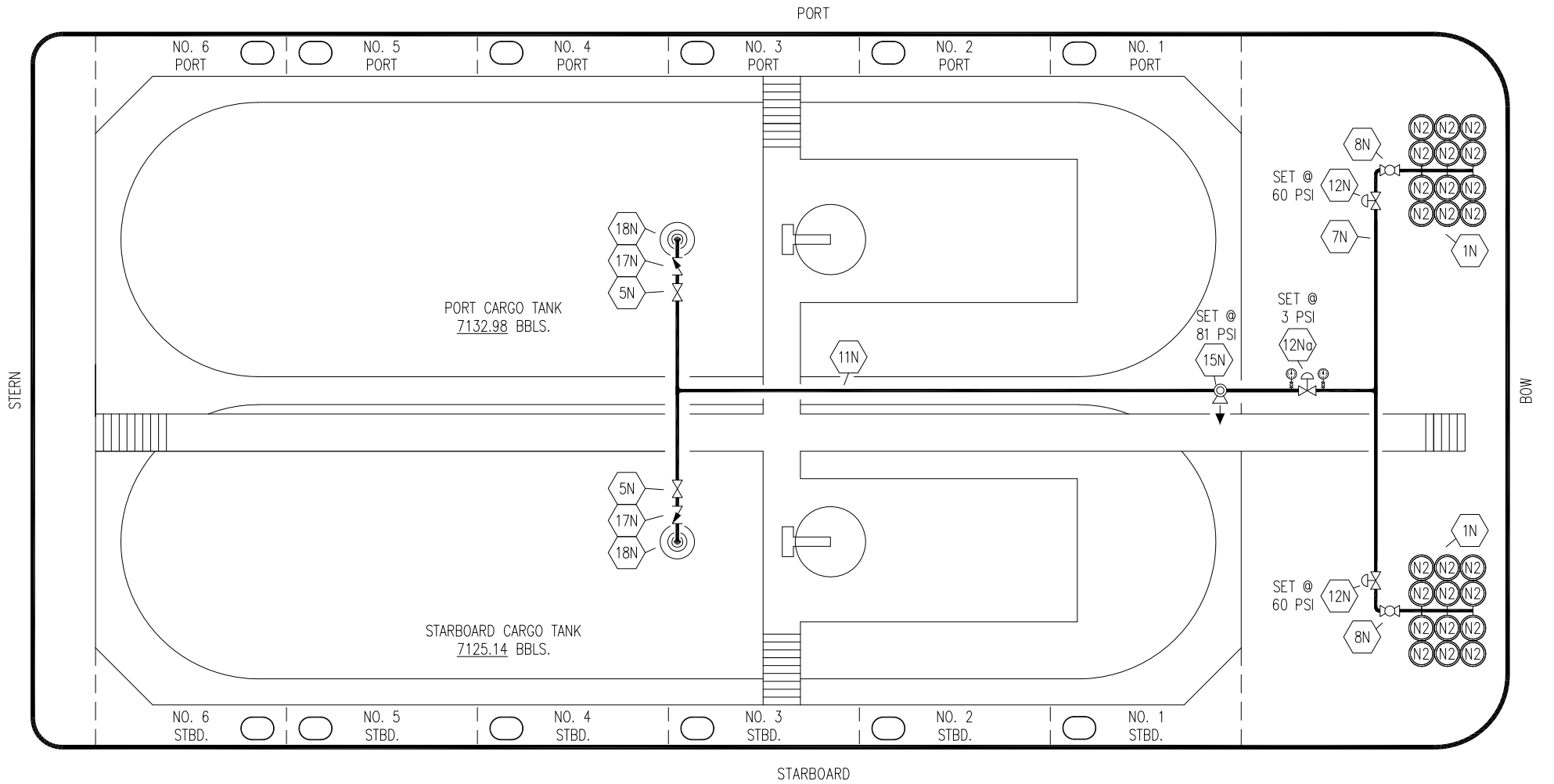
INGALLS IRON – EX: N/A


REV.	DATE	BY	CHK	APP	REVISION DESCRIPTION
1	06/03/22	MRV	DDA	DAR	REVISED PER CLIENT COMMENTS
0	04/13/12	DCB	DDA		ISSUED FOR REVIEW

KIRBY INLAND MARINE

VAPOR
PIPING FLOW DIAGRAM


SCALE: NONE	USL 139	REV. 1
PAGE: 2 OF 3		



- | NO | DESCRIPTION |
|------|---|
| 1N | NITROGEN BOTTLE RACK (12 PK.) |
| 5N | N2 SUPPLY VALVE |
| 7N | NITROGEN HEADER |
| 8N | N2 REGULATOR CONTROL VALVE |
| 11N | NITROGEN PIPELINE |
| 12N | HARRIS NITROGEN REGULATOR |
| 12No | FISHER NITROGEN REGULATOR |
| 15N | N2 RELIEF VALVE |
| 17N | N2 CHECK VALVE |
| 18N | N2 TANK PENETRATION  |

 ABOVE DECK PIPING

REV.	DATE	BY	CHK	APP	REVISION DESCRIPTION
1	06/03/22	MRV	DDA	DAR	REVISED PER CLIENT COMMENTS
0	04/13/12	DCB	DDA		ISSUED FOR REVIEW

 KIRBY INLAND MARINE	
NITROGEN PIPING FLOW DIAGRAM	
SCALE: NONE PAGE: 3 OF 3	USL 139 REV. 1