


- | NO | DESCRIPTION |
|-----|------------------------------------|
| 1C | CARGO TANK VALVE |
| 5C | HEADER VALVE |
| 8C | RELIEF VALVE/STACK |
| 19C | CARGO HEADER |
| 30C | CARGO PIPELINE |
| 37C | CARGO DROP |
| (H) | HYDRAULIC ACTUATED AUTOMATIC VALVE |
| — | ABOVE DECK PIPING |

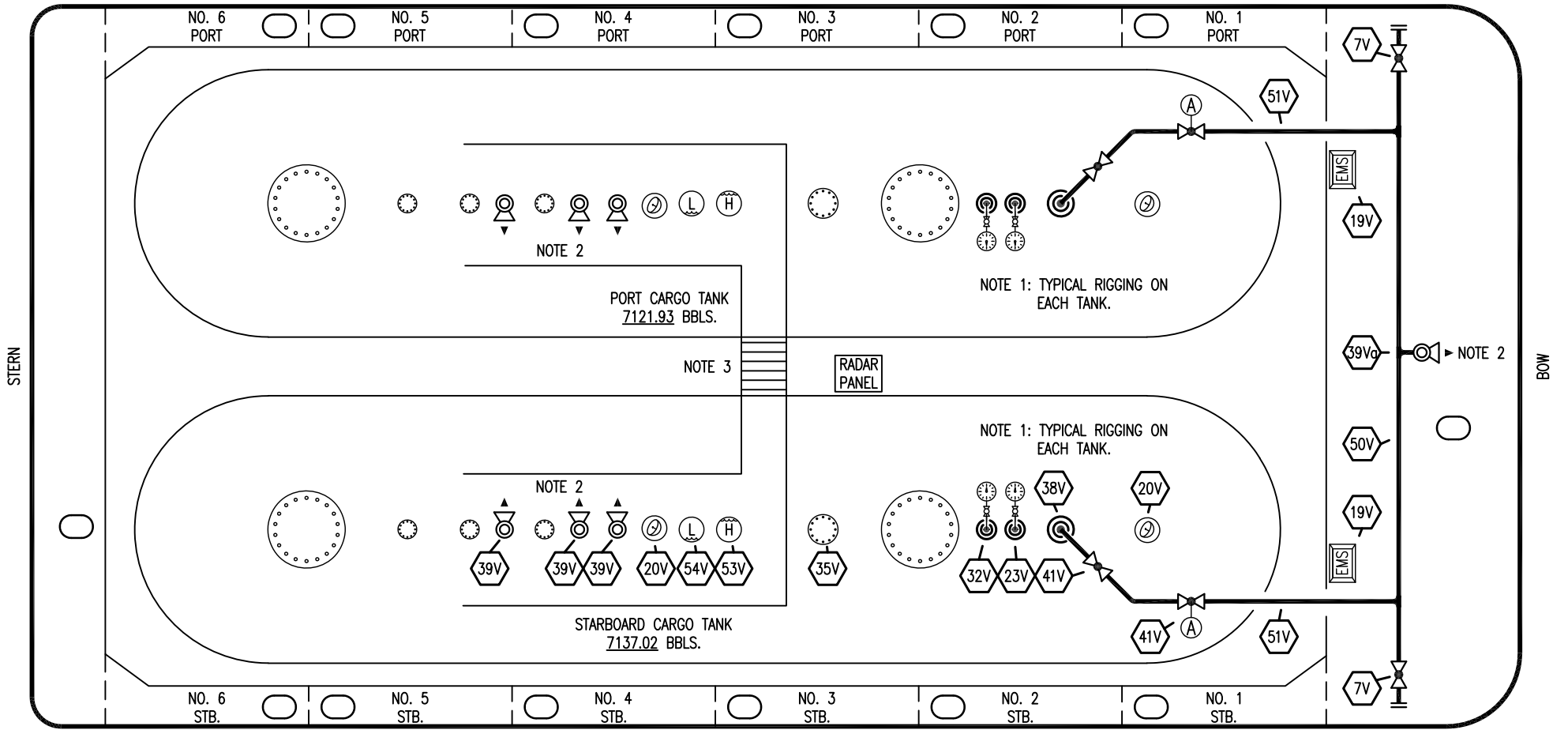
NOTE 1: P/V VALVES VENTED TO ATMOSPHERE
 NOTE 2: CONDUIT BELOW GRATE FOR EMS.

INGALLS IRON – EX: N/A

REV.	DATE	BY	CHK	APP	REVISION DESCRIPTION
1	12/15/22	MRV	DDA	DAR	REVISED PER CLIENT COMMENTS
0	01/17/13	DCB	DDA		ISSUED FOR REVIEW

KIRBY INLAND MARINE		
CARGO		
PIPING FLOW DIAGRAM		
SCALE: NONE	USL 138	
PAGE: 1 OF 3	REV. 1	

PORT



STARBOARD

NO	DESCRIPTION	NO	DESCRIPTION
7V	HEADER VALVE	50V	VAPOR HEADER
11V	GAUGE STICK (MIDDLE)	51V	VAPOR PIPELINE
19V	EMERGENCY SHUT DOWN STATIONS	53V	HIGH LEVEL GAUGE
20V	RADAR GAUGING	54V	LOW LEVEL GAUGE
23V	PRESSURE GAUGE	—	ABOVE DECK PIPING
32V	TEMPERATURE GAUGE	(A)	AIR ACTUATED VALVE
38V	VAPOR DROP OR PENETRATION (☉)		
39V	PRESSURE/VACUUM VALVE		
39Va	STACK-PRESSURE/VACUUM VALVE		
41V	VAPOR TANK VALVE		

NOTE 1: TYPICAL RIGGING ON EACH TANK
 NOTE 2: P/V VALVES VENTED TO ATMOSPHERE
 NOTE 3: CONDUIT BELOW GRATE FOR EMS.

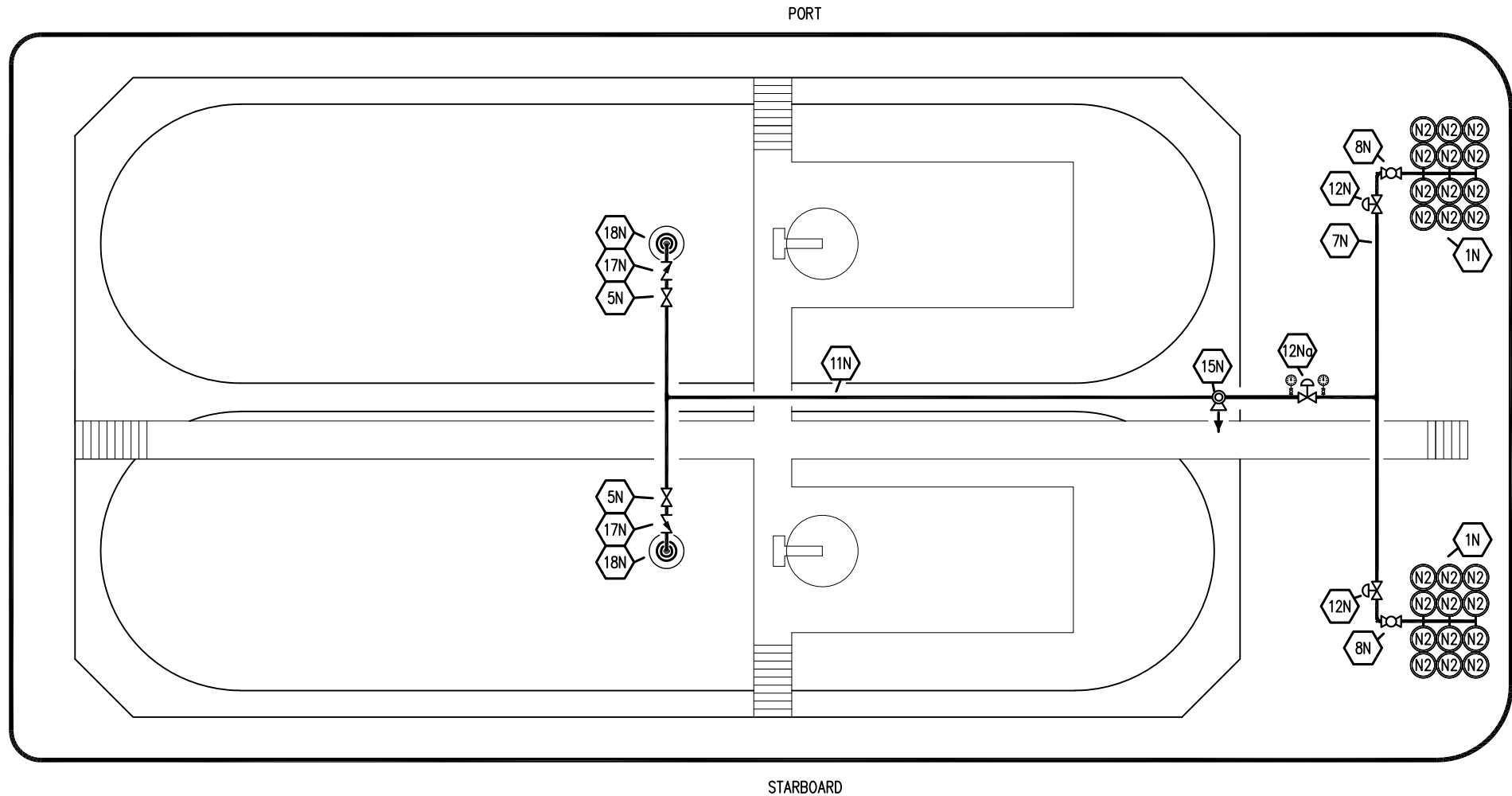
INGALLS IRON – EX: N/A


REV.	DATE	BY	CHK	APP	REVISION DESCRIPTION
1	12/15/22	MRV	DDA	DAR	REVISED PER CLIENT COMMENTS
0	01/17/13	DCB	DDA		ISSUED FOR REVIEW

KIRBY INLAND MARINE

VAPOR PIPING FLOW DIAGRAM

SCALE: NONE	USL 138	REV. 1
PAGE: 2 OF 3		



- | NO | DESCRIPTION |
|------|---|
| 1N | NITROGEN BOTTLE RACK (12 PK.) |
| 5N | N2 SUPPLY VALVE |
| 7N | NITROGEN HEADER |
| 8N | N2 REGULATOR CONTROL VALVE |
| 11N | NITROGEN PIPELINE |
| 12N | HARRIS NITROGEN REGULATOR |
| 12Na | FISHER NITROGEN REGULATOR |
| 15N | N2 RELIEF VALVE |
| 17N | N2 CHECK VALVE |
| 18N | N2 TANK PENETRATION  |

— ABOVE DECK PIPING

REV.	DATE	BY	CHK	APP	REVISION DESCRIPTION
1	12/15/22	MRV	DDA	DAR	REVISED PER CLIENT COMMENTS
0	01/17/13	DCB	DDA		ISSUED FOR REVIEW

KIRBY INLAND MARINE 

**NITROGEN
PIPING FLOW DIAGRAM**

SCALE: NONE
PAGE: 3 OF 3

USL 138

REV. **1**