

- | NO  | DESCRIPTION                  |
|-----|------------------------------|
| 1C  | CARGO TANK VALVE             |
| 5C  | HEADER VALVE                 |
| 8C  | RELIEF VALVE/4" STACK        |
| 19C | 6" CARGO HEADER              |
| 26C | DRAIN (BLEED) VALVE          |
| 30C | 4" CARGO PIPELINE            |
| 37C | 4" CARGO DROP (⊙)            |
| (A) | AIR ACTUATED AUTOMATIC VALVE |
| —   | ABOVE DECK PIPING            |

NOTE 1: P/V VALVES VENTED TO ATMOSPHERE  
 NOTE 2: 2" CONDUIT BELOW GRATE FOR EMS.

INGALLS IRON - EX: N/A

0	04/04/12	DCB	DDA	OF	ISSUED FOR REVIEW
REV.	DATE	BY	CHK	APP	REVISION DESCRIPTION

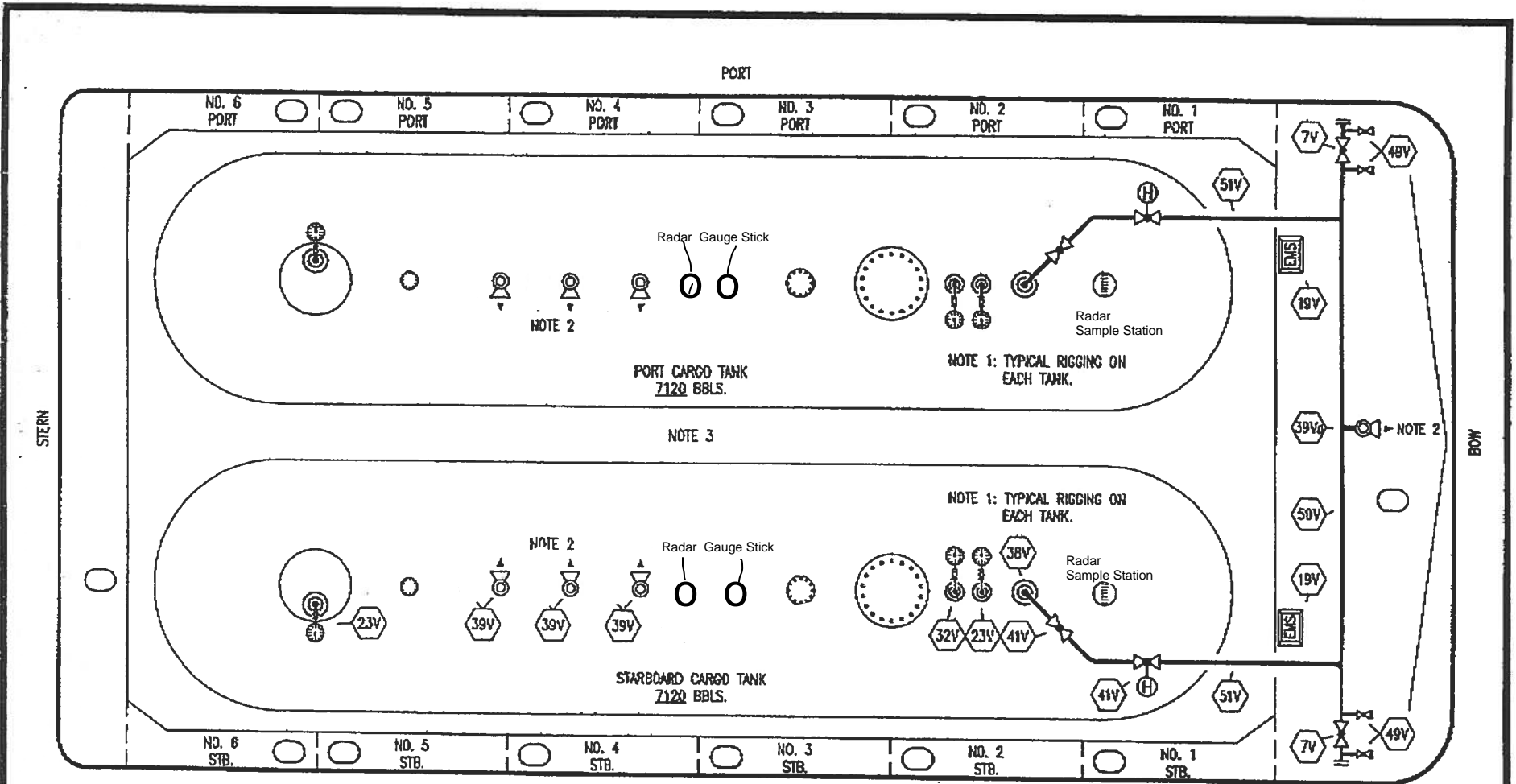
KIRBY INLAND MARINE

CARGO  
PIPING FLOW DIAGRAM

USL 137

REV 0

SCALE: NONE  
 PAGE: 1 OF 3



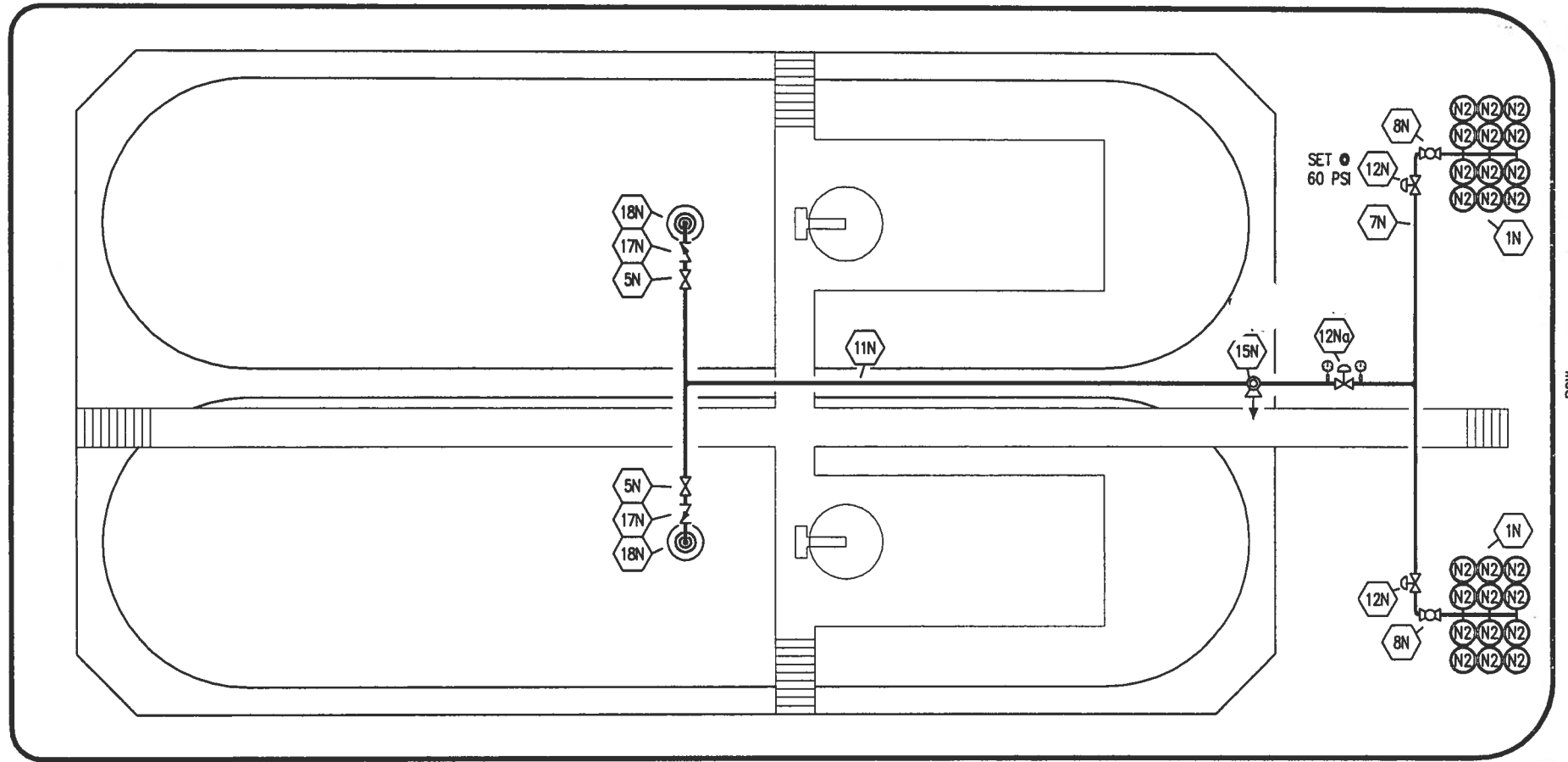
NO	DESCRIPTION	NO	DESCRIPTION
7V	4" HEADER VALVE	50V	4" VAPOR HEADER
11V	GAUGE STCK (MIDDLE)	51V	3" VAPOR PIPELINE
19V	EMERGENCY SHUT DOWN STATIONS	53V	HIGH LEVEL GAUGE
23V	PRESSURE GAUGE	54V	LOW LEVEL GAUGE
32V	TEMPERATURE GAUGE 0-160 F	—	ABOVE DECK PIPING
38V	VAPOR DROP OR PENETRATION	(A)	AIR ACTUATED VALVE
39V	PRESSURE/VACUUM VALVE		
39V <sub>2</sub>	4" STACK-3 PRESSURE/VACUUM VALVE		
41V	3" VAPOR TANK VALVE		

NOTE 1: TYPICAL RIGGING ON EACH TANK  
 NOTE 2: P/V VALVES VENTED TO ATMOSPHERE  
 NOTE 3: 2" CONDUIT BELOW GRATE FOR EMS.

INGALLS IRON - EX: N/A

				<b>KIRBY INLAND MARINE</b>	
				<b>VAPOR PIPING FLOW DIAGRAM</b>	
0	04/04/12	DCB	DDA	ISSUED FOR REVIEW	SCALE: NONE
REV.	DATE	BY	CHK/APP	REVISION DESCRIPTION	PAGE: 2 OF 3
					<b>USL 137</b>
					REV. <b>0</b>

PORT



STARBOARD

- | NO   | DESCRIPTION                   |
|------|-------------------------------|
| 1N   | NITROGEN BOTTLE RACK (12 PK.) |
| 5N   | N2 SUPPLY VALVE               |
| 7N   | NITROGEN HEADER               |
| 8N   | N2 REGULATOR CONTROL VALVE    |
| 11N  | NITROGEN PIPELINE             |
| 12N  | HARRIS NITROGEN REGULATOR     |
| 12Nq | FISHER NITROGEN REGULATOR     |
| 15N  | N2 RELIEF VALVE               |
| 17N  | N2 CHECK VALVE                |
| 18N  | N2 TANK PENETRATION (⊙)       |

— ABOVE DECK PIPING

0	04/04/12	DCB	DDA	ISSUED FOR REVIEW	SCALE: NONE
REV.	DATE	BY	CHK	APP	REVISION DESCRIPTION

KIRBY INLAND MARINE

**NITROGEN  
PIPING FLOW DIAGRAM**

**USL 137**

REV. **0**

PAGE: 3 OF 3