

INGALLS IRON - EX: N/A



KIRBY INLAND MARINE

**CARGO
PIPING FLOW DIAGRAM**

REV.	DATE	BY	CHK	APP	REVISION DESCRIPTION	SCALE	PAGE	REV.
0	10/05/09	13	DCB	DDA	FOR REVIEW	NONE	1 OF 3	0

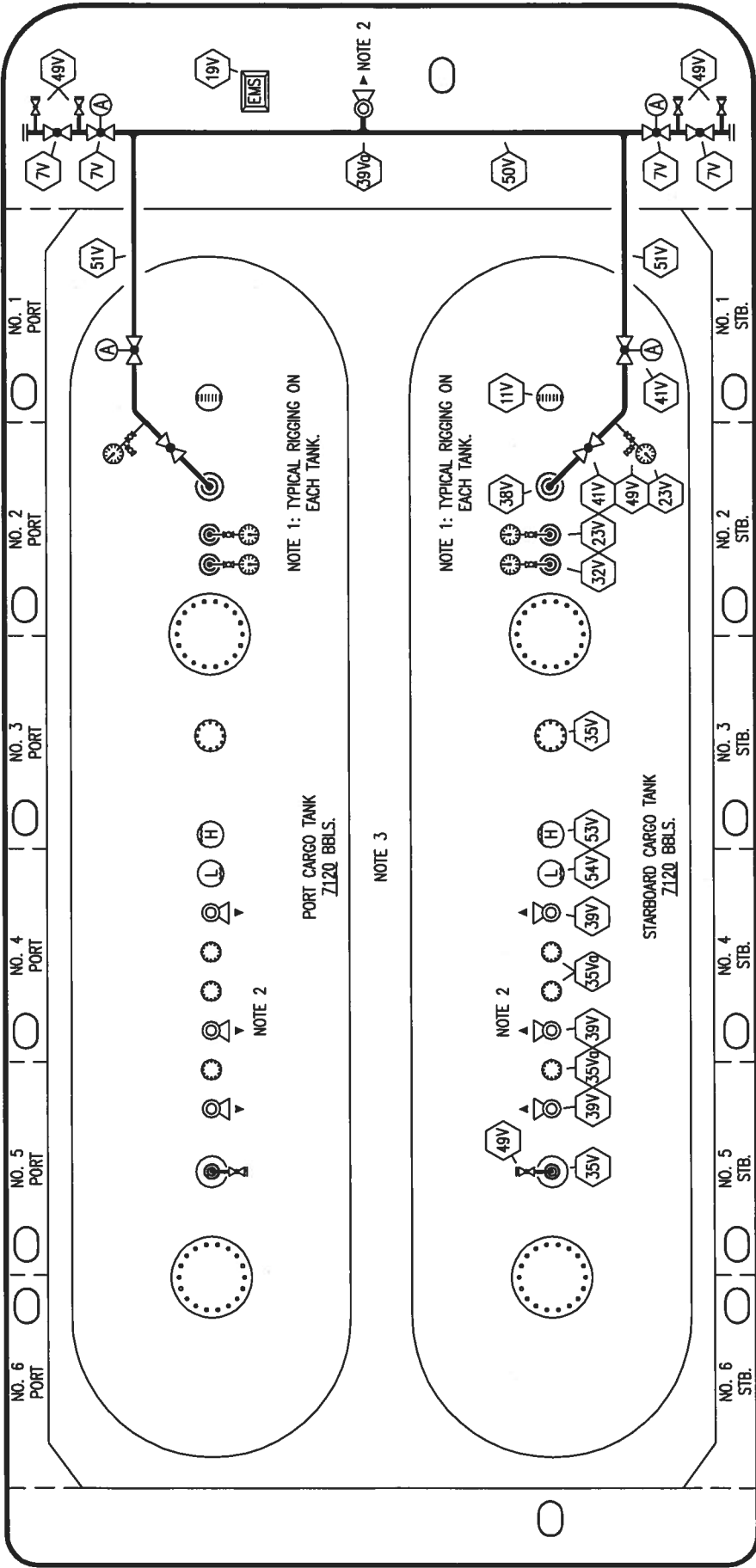
DESCRIPTION

- 1C 4" CARGO TANK VALVE
 - 5C 6" HEADER VALVE
 - 8C 3 RELIEF VALVE/4" STACK
 - 11C BLEED OFF VALVE
 - 19C 6" CARGO HEADER
 - 26C DRAIN (BLEED) VALVE
 - 30C 4" CARGO PIPELINE
 - 36C 0-300# PRESSURE GAUGE
 - 37C 4" CARGO DROP
 - A AIR ACTUATED AUTOMATIC VALVE
- ABOVE DECK PIPING

NOTE 1: P/A VALVES VENTED TO ATMOSPHERE
NOTE 2: 2" CONDUIT BELOW GRADE FOR EMS.

PORT

NO. 6 PORT NO. 5 PORT NO. 4 PORT NO. 3 PORT NO. 2 PORT NO. 1 PORT



STARBOARD

NO. 6 STB. NO. 5 STB. NO. 4 STB. NO. 3 STB. NO. 2 STB. NO. 1 STB.

- | | | | |
|----------|----------------------------------|----------|------------------------------|
| NO. 7V | 4" HEADER VALVE | NO. 41V | 3" VAPOR TANK VALVE |
| NO. 11V | GAUGE STICK (MIDDLE) | NO. 49V | BLEED VALVE |
| NO. 19V | EMERGENCY SHUT DOWN STATIONS | NO. 50V | 4" VAPOR HEADER |
| NO. 23V | PRESSURE GAUGE 0-300# | NO. 51V | 3" VAPOR PIPELINE |
| NO. 32V | TEMPERATURE GAUGE 0-160 F | NO. 53V | HIGH LEVEL GAUGE |
| NO. 35V | 12" NOZZLE W/ 2" BLIND | NO. 54V | LOW LEVEL GAUGE |
| NO. 35Vb | SPARE 6" (BLIND) | NO. 54Vb | ABOVE DECK PIPING |
| NO. 38V | VAPOR DROP OR PENETRATION | NO. 51Vb | AIR ACTUATED AUTOMATIC VALVE |
| NO. 39V | PRESSURE/VACUUM VALVE @ 260 PS | NO. 51Vc | |
| NO. 39Vb | 4" STACK-3 PRESSURE/VACUUM VALVE | NO. 51Vd | |

INGALLS IRON - EX: N/A



KIRBY INLAND MARINE

VAPOR

PIPING FLOW DIAGRAM

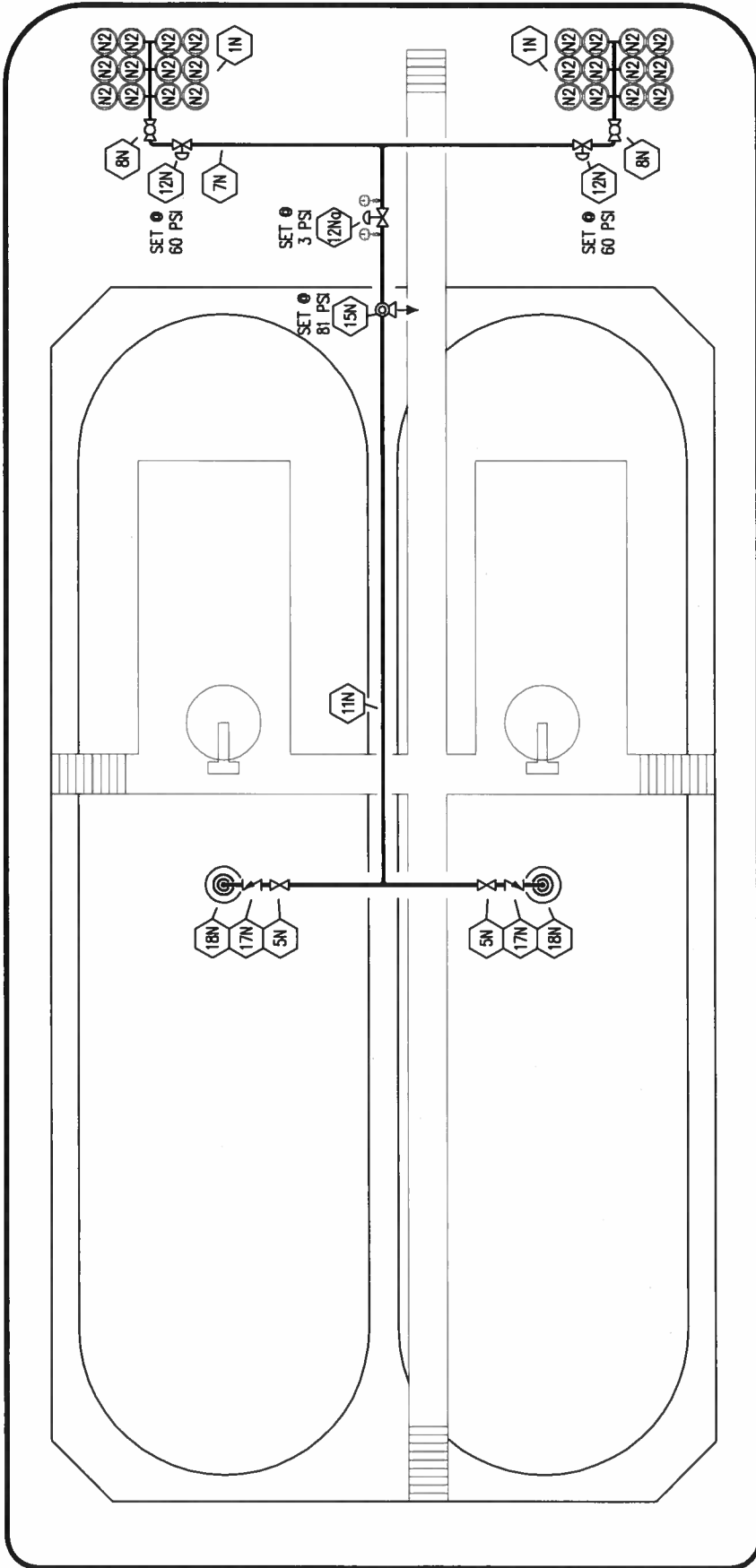
REV.	DATE	BY	CHK/APP	REVISION DESCRIPTION
0	05/09/13	DCB	DDA	FOR REVIEW

SCALE: NONE
PAGE: 2 OF 3

USL 131

REV. 0

PORT



STERN

STARBOARD

- NO** **DESCRIPTION**
- 1N NITROGEN BOTTLE RACK (12 PK.)
 - 5N N2 SUPPLY VALVE
 - 7N NITROGEN HEADER
 - 8N N2 REGULATOR CONTROL VALVE
 - 11N NITROGEN PIPELINE
 - 12N HARRIS NITROGEN REGULATOR
 - 12No FISHER NITROGEN REGULATOR
 - 15N N2 RELIEF VALVE
 - 17N N2 CHECK VALVE
 - 18N N2 TANK PENETRATION
- ABOVE DECK PIPING



KIRBY INLAND MARINE

**NITROGEN
PIPING FLOW DIAGRAM**

REV.	DATE	BY	CHK	APP	REVISION	DESCRIPTION	SCALE:	NONE	PAGE:	3 OF 3	REV.	0
0	05/09/13	DCB	DDA			FOR REVIEW						