

PORT CARGO TANK  
7159.95 BBLs.

STARBOARD CARGO TANK  
7158.29 BBLs.

NOTE 2

NOTE 1


- | NO  | DESCRIPTION                  |
|-----|------------------------------|
| 1C  | 4" CARGO TANK VALVE          |
| 5C  | 6" HEADER VALVE              |
| 8C  | 3 RELIEF VALVE/4" STACK      |
| 11C | BLEED OFF VALVE              |
| 19C | 6" CARGO HEADER              |
| 26C | DRAIN (BLEED) VALVE          |
| 30C | 4" CARGO PIPELINE            |
| 36C | 0-300# PRESSURE GAUGE        |
| 37C | 4" CARGO DROP                |
| (A) | AIR ACTUATED AUTOMATIC VALVE |
- ABOVE DECK PIPING

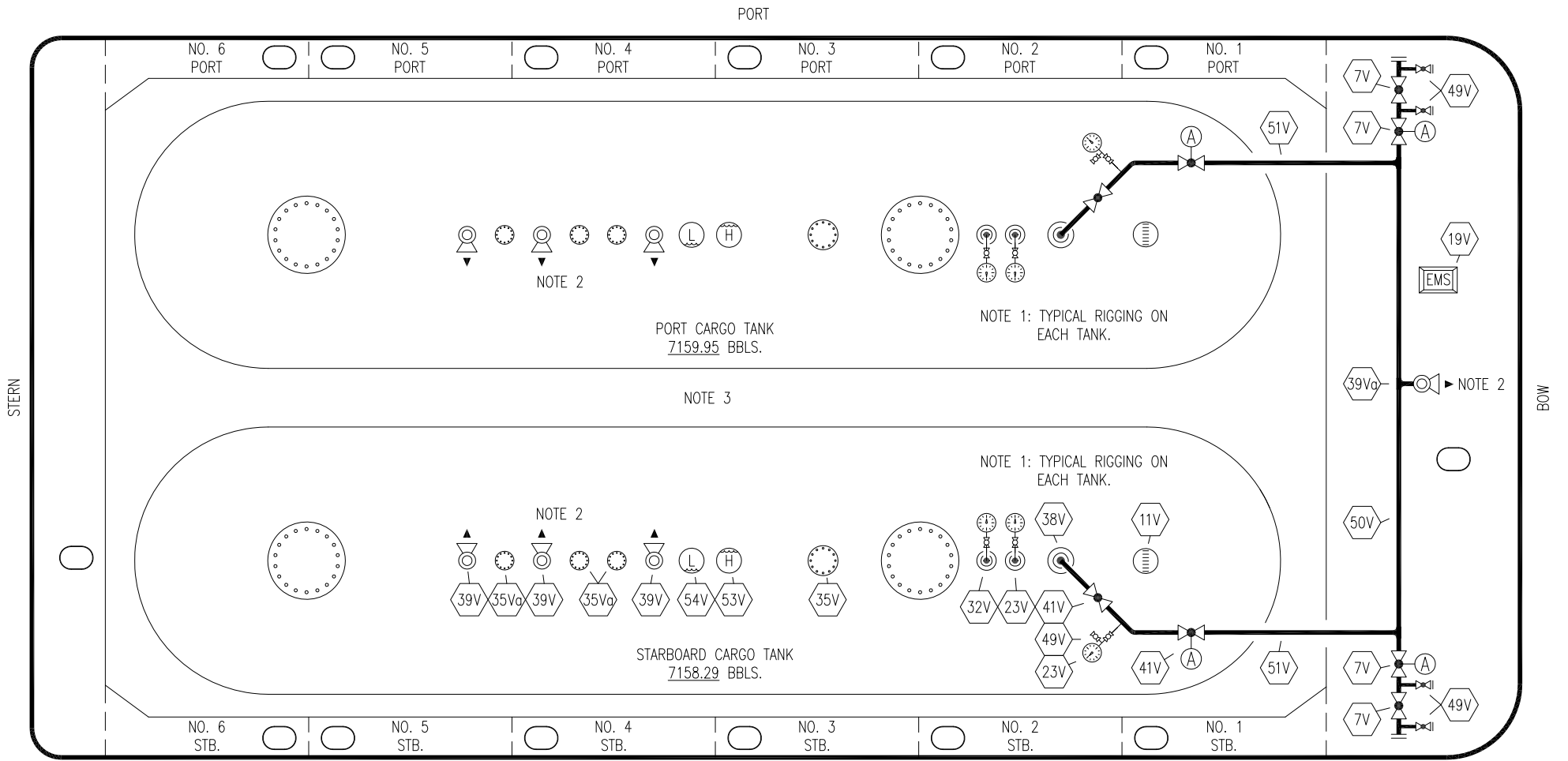
NOTE 1: P/V VALVES VENTED TO ATMOSPHERE

NOTE 2: 2" CONDUIT BELOW GRATE FOR EMS.

INGALLS IRON - EX: N/A

REV.	DATE	BY	CHK	APP	REVISION DESCRIPTION
0	11/08/12	DCB	DDA		FOR REVIEW

 <b>KIRBY INLAND MARINE</b>	
<b>CARGO</b> <b>PIPING FLOW DIAGRAM</b>	
SCALE: NONE PAGE: 1 OF 3	<b>USL 128</b> REV. <b>0</b>



NO	DESCRIPTION	NO	DESCRIPTION
7V	4" HEADER VALVE	41V	3" VAPOR TANK VALVE
11V	GAUGE STICK (MIDDLE)	49V	BLEED VALVE
19V	EMERGENCY SHUT DOWN STATIONS	50V	4" VAPOR HEADER
23V	PRESSURE GAUGE 0-300#	51V	3" VAPOR PIPELINE
32V	TEMPERATURE GAUGE 0-160 F	53V	HIGH LEVEL GAUGE
35V	12" NOZZLE W/ 2" BLIND	54V	LOW LEVEL GAUGE
35Vg	SPARE 6" (BLIND)	—	—
38V	VAPOR DROP OR PENETRATION (⊙)	—	—
39V	PRESSURE/VACUUM VALVE @ 260 PSI	(A)	AIR ACTUATED AUTOMATIC VALVE
39Vg	4" STACK-3 PRESSURE/VACUUM VALVE		

REV.	DATE	BY	CHK	APP	REVISION DESCRIPTION
2	11/08/21	MRV	DDA	DAR	REVISED PER CLIENT COMMENTS
1	11/08/21	MRV	DDA	DAR	REVISED PER CLIENT COMMENTS
0	11/08/12	DCB	DDA		FOR REVIEW

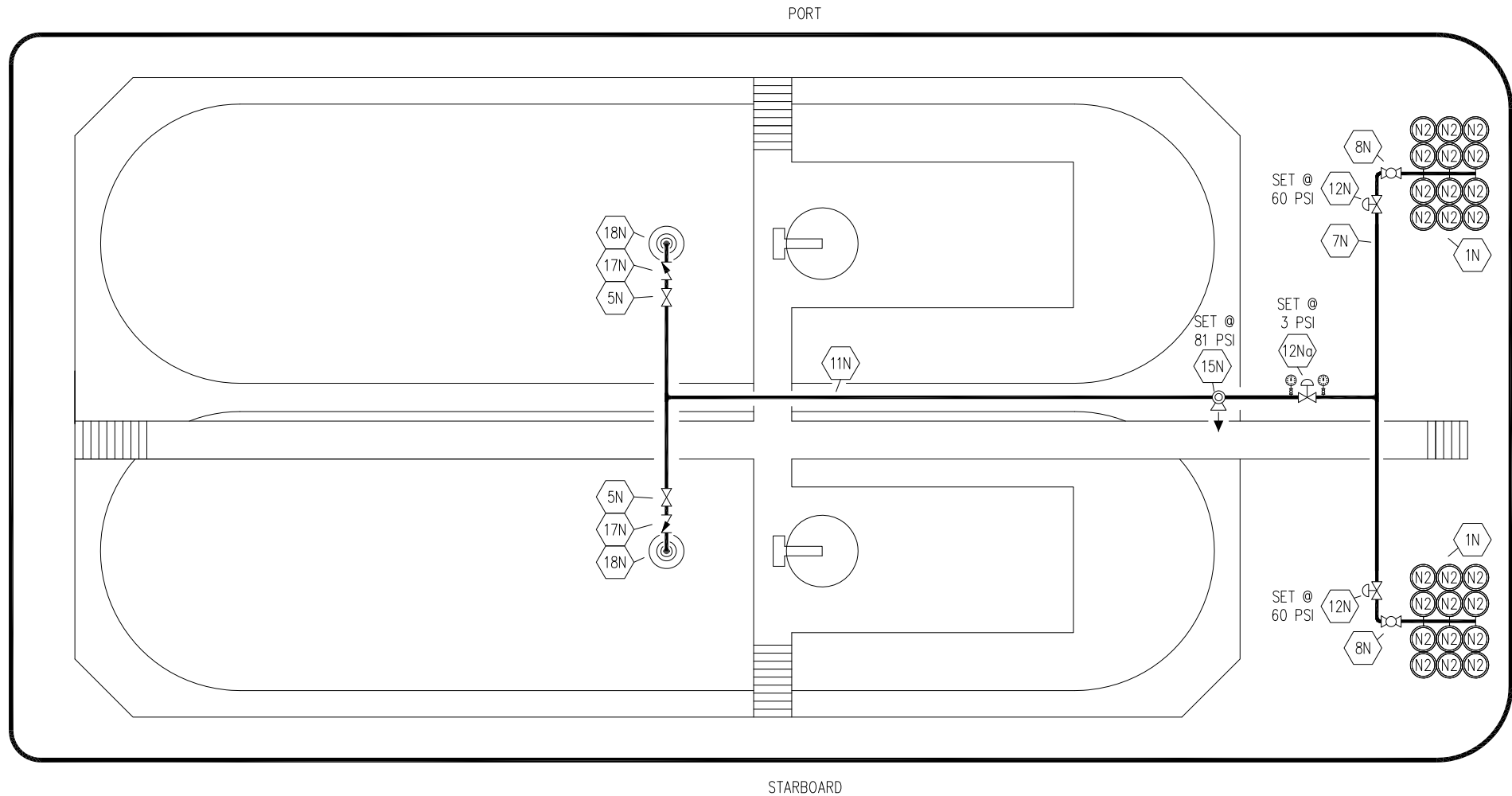
KIRBY INLAND MARINE


VAPOR  
PIPING FLOW DIAGRAM

USL 128

REV. 2

SCALE: NONE	PAGE: 2 OF 3
-------------	--------------



- | NO   | DESCRIPTION   |
|------|---|
| 1N   | NITROGEN BOTTLE RACK (12 PK.)   |
| 5N   | N2 SUPPLY VALVE   |
| 7N   | NITROGEN HEADER   |
| 8N   | N2 REGULATOR CONTROL VALVE  |
| 11N  | NITROGEN PIPELINE   |
| 12N  | HARRIS NITROGEN REGULATOR   |
| 12No | FISHER NITROGEN REGULATOR   |
| 15N  | N2 RELIEF VALVE   |
| 17N  | N2 CHECK VALVE  |
| 18N  | N2 TANK PENETRATION  |

 ABOVE DECK PIPING

REV.	DATE	BY	CHK	APP	REVISION DESCRIPTION
1	11/08/21	MRV	DDA	DAR	REVISED PER CLIENT COMMENTS
0	11/08/12	DCB	DDA		FOR REVIEW

KIRBY INLAND MARINE 

**NITROGEN  
PIPING FLOW DIAGRAM**

SCALE: NONE  
PAGE: 3 OF 3

**USL 128**

REV. **1**