

DECK PLAN

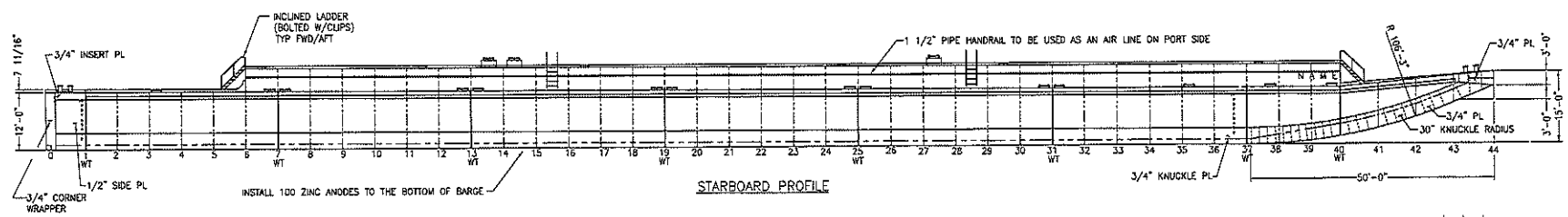
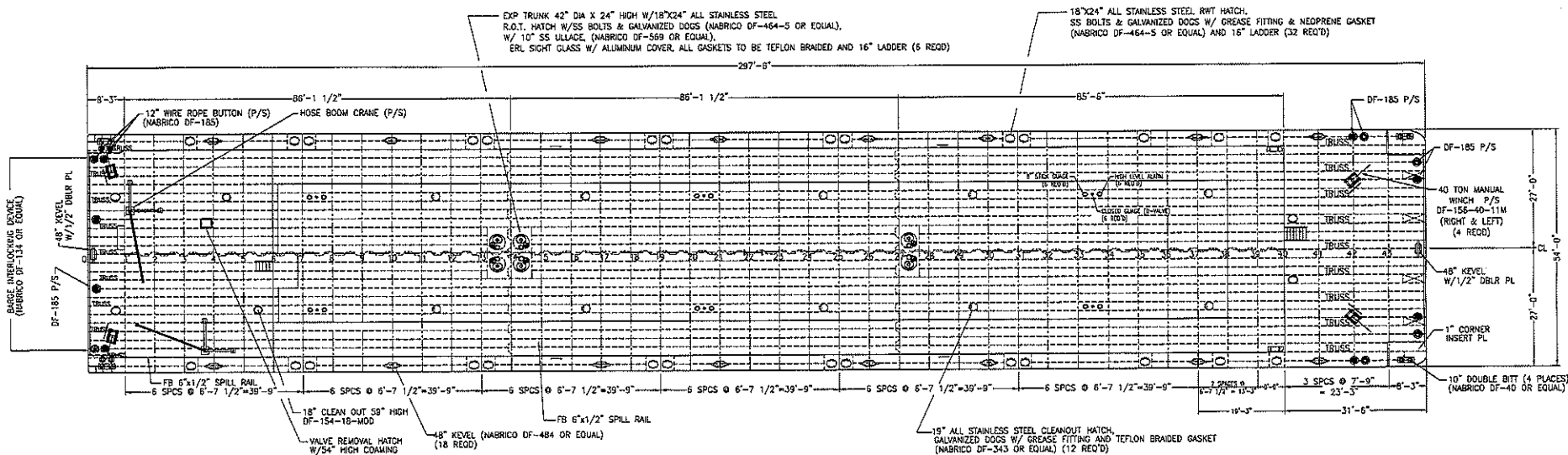
- | | | |
|--------------------------------------|--|--------------------------------------|
| V01 CARGO PUMP SUCTION VALVE | V21 CARGO HEADER STRIPPING VALVE-FWD | V41 STRIPPING VALVE-DRIP TRAYS |
| V02 CARGO PUMP DISCHARGE CHECK VALVE | V22 STRIPPING VALVE-TANK 1P | V42 STERN CARGO HEADER VALVE |
| V03 CARGO PUMP DISCHARGE VALVE | V23 STRIPPING VALVE-TANK 1S | V43 STERN VAPOR HEADER VALVE |
| V04 CARGO PUMP RELIEF VALVE | V24 STRIPPING VALVE-TANK 2P | V44 CROSSOVER BLOCK VALVE-TANK #1 |
| V05 CARGO PUMP BYPASS VALVE | V25 STRIPPING VALVE-TANK 2S | V45 AIR VALVE-STERN |
| V06 PORT CARGO HEADER VALVE | V26 STRIPPING VALVE-TANK 3P | V46 CARGO HEADER STRIPPING VALVE-AFT |
| V07 STBD CARGO HEADER VALVE | V27 STRIPPING VALVE-TANK 3S | |
| V08 CARGO LOADING VALVE | V28 STRIPPING VALVE-CARGO PUMPWELL | |
| V09 STBD DOCKSIDE HEADER VALVE | V29 STRIPPING VALVE-SUCTION FROM SYS | |
| V10 PORT DOCKSIDE HEADER VALVE | V30 STRIPPING VALVE-SUCTION FR SLOP TK | |
| V11 CARGO VALVE-TANK 1S | V31 STRIPPING VALVE-RETURN TO SYS | |
| V12 CARGO VALVE-TANK 1P | V32 STRIPPING VALVE-SUCT HOSE CONN | |
| V13 CARGO VALVE-TANK 2S | V33 STRIPPING VALVE-PUMP DISCHARGE | |
| V14 CARGO VALVE-TANK 2P | V34 STRIPPING VALVE-DISCH HOSE CONN | |
| V15 CARGO VALVE-TANK 3S | V35 STRIPPING VALVE-DISCH TO SLOP TK | |
| V16 CARGO VALVE-TANK 3P | V36 CROSSOVER BLOCK VALVE-TANK #3 | |
| V17 STBD VAPOR HEADER VALVE | V37 CROSSOVER BLOCK VALVE-TANK #2 | |
| V18 PORT VAPOR HEADER VALVE | V38 LONGITUDINAL HEADER BLOCK VALVE | |
| V19 VAPOR STACK BLOCK VALVE | V39 AIR VALVE-FORWARD | |
| V20 VAPOR P/V VALVE | V40 AIR VALVE-AFT | |

1		ADDED V44,V45,V46 FOR ADDITIONAL CARGO, AIR AND STRIPPING VALVES PER CUSTOMER REQUEST.		2/10	SOB
REV	ITEM	DESCRIPTION	DATE	BY	
REVISIONS					
<small>The drawings and the information shown thereon are copyrighted by Trinity Marine Products (2013) and are the sole property of Trinity Marine Products. Neither the drawings nor such information is to be used for any purpose other than that for which it was specifically furnished from Trinity Marine Products, LLC, nor is any reproduction authorized without written permission.</small>					
 TRINITY MARINE PRODUCTS, INC. <small>180 Webb Road - Ashland City, TN 37015</small>					
SETTOON TOWING, LLC. 297'-8" X 54'-0" X 12'-0" D/S TANK BARGE VALVE LABEL PLATE DIAGRAM					
SCALE: N/A	DATE: 11/14/13		DWG No.		
DRAWN BY: POC	CHK BY: CC	APPR BY:	P-01		
YARD: ASHLAND CITY	TAG No.: 50229	SHEET 1 OF 1			
HULL No.:	SEE NOTE	SHOP ORDER:	REV: 1		

HULL #:
4989-90, 5027-28
5043-45, 5048-49

RELEASED TO PRODUCTION

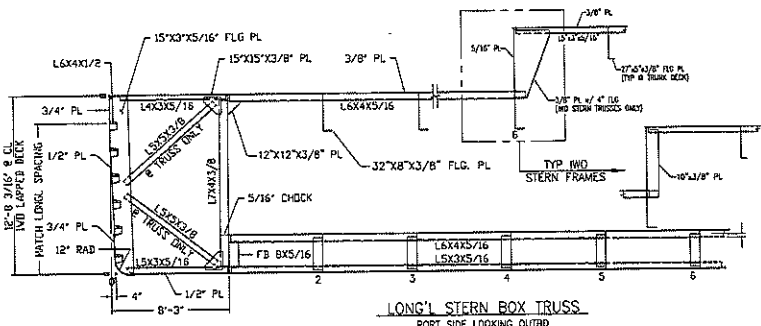
64



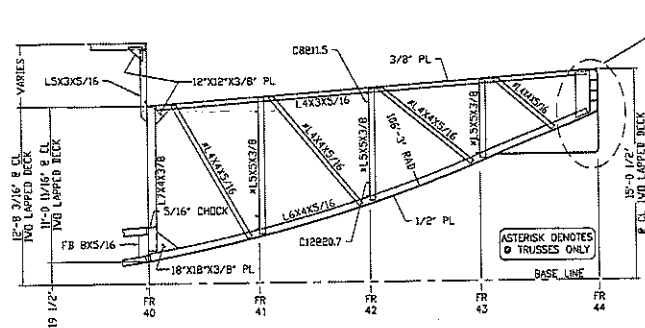
- NOTE**
- SCANTLINGS BASED ON BUILDERS INTERPRETATION OF 2007 AMERICAN BUREAU OF SHIPPING "RULES FOR BUILDING AND CLASSING STEEL VESSELS FOR SERVICE ON RIVERS AND INTRACOASTAL WATERWAYS". CARGO TANK SCANTLINGS ARE BUILT TO TANK BOUNDARY (DEEP TANK) BULKHEAD RULES FOR SPECIFIC GRAVITY OF 1.05.
 - ALL MATERIALS, WELDING PROCEDURES AND TESTING SHALL MEET THE REQUIREMENTS OF THE U.S.C.G.
 - ALL DETAILS OF CONSTRUCTION AND WORKMANSHIP SHALL BE DONE TO THE STANDARDS SET FOR INLAND BARGES.
 - CARGO TANK STRUCTURE BUILT FOR MAMP OF 3.0 PSIG
 - ALL INNER BOTTOM, WING AND END COMPARTMENTS ARE DRY VOIDS.

NOTE:
 4999-4999
 5027-5028
 5043-5045
 5048-5049

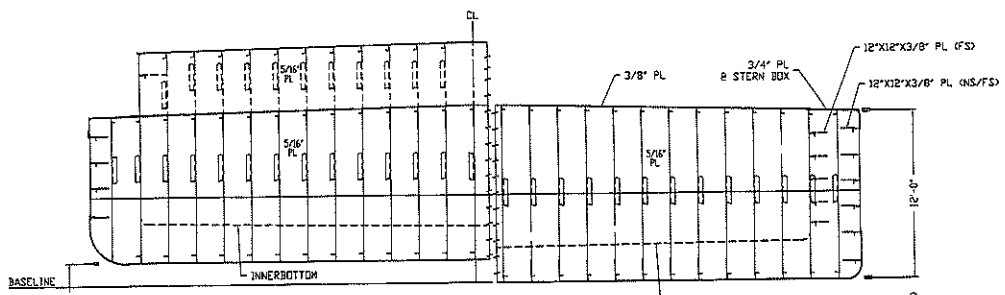
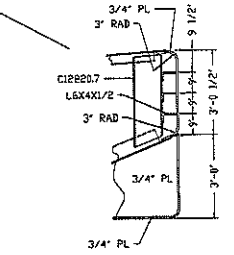
REV	NO	DESCRIPTION	DATE	BY
REVISIONS				
TRINITY MARINE PRODUCTS, INC.				
<small>The drawings and the information shown hereon are copyrighted by Trinity Marine Products (2013) and the use, storage or dissemination of these drawings and technical information is to be used for any purpose other than that for which it was specifically furnished from Trinity Marine Products, LLC, without the express written consent of Trinity Marine Products, LLC.</small>				
SETTOON TOWING, LLC 297'-6" X 54'-0" X 12'-0" DOUBLE SKIN TANK BARGE, RAKE				
GENERAL ARRANGEMENT				
SCALE:	3/32" = 1'	DATE:	12-18-13	DWG NO.
DRAWN BY:	KA	CHK'D BY:	MCC	S-01
YARD:	ASHLAND CITY	TAG NO.:	96229	SHT 1 OF 2
HULL NO.:	SEE NOTE	SHOP ORDER:		REV. 0
WAS 88204 REV. 0				PAGE 1/8



LONG'S STERN BOX TRUSS
PORT SIDE LOOKING OUTBD

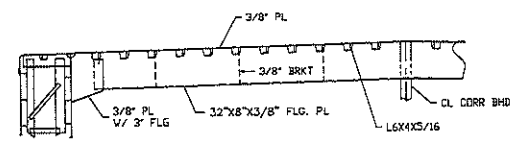


LONG'S BOW RAKE TRUSS
PORT SIDE LOOKING OUTBD

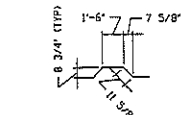


PARTIAL SECTION @ FWD COLLISION BHD
(LOOKING AFT)
FOR INFO NOT SHOWN SEE PARTIAL SECTION @ W.T. BHD

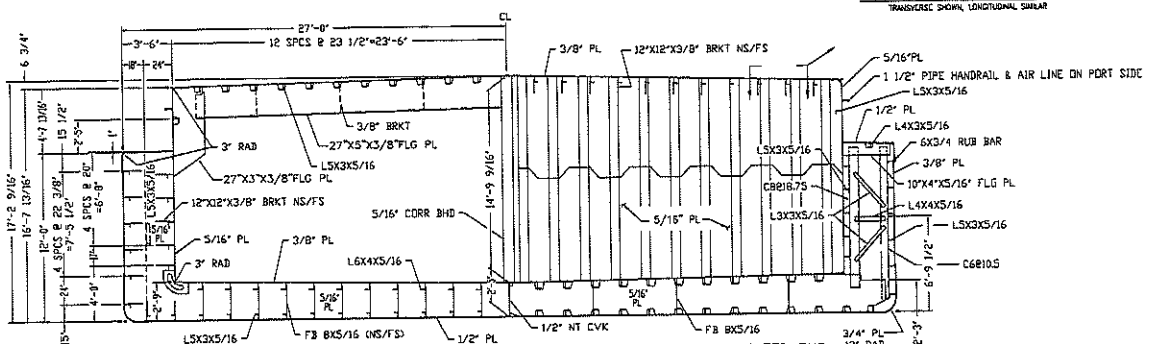
PARTIAL SECTION @ AFT COLLISION BHD
(LOOKING FWD)
FOR INFO NOT SHOWN SEE PARTIAL SECTION @ W.T. BHD



PARTIAL SECTION @ PUMP DK
(LOOKING FWD)

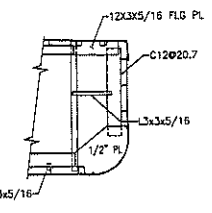


CORRUGATED BHD PROFILE
TRANSVERSE SHOWS LONGITUDINAL CURVATURE



PARTIAL SECTION @ W.T. BHD
(LOOKING FWD)

PARTIAL SECTION @ CORRUGATED BHD
(LOOKING FWD)



BOW SECTION @ TRANSVERSE FRAME
(STBD SIDE LOOKING FWD)

REV	ITEM	DESCRIPTION	DATE	BY
REVISIONS				
TRINITY MARINE PRODUCTS, INC.				
The drawings and the information herein are prepared by Trinity Marine Products (TMP) and the user assumes all responsibility for their use. No liability is assumed for any reproduction without written permission.				
SETTOON TOWING, LLC				
29'-6" X 54'-0" X 12'-0" DOUBLE SKIN TANK BARGE, RAKE				
GENERAL ARRANGEMENT				
SCALE:	1/4" = 1'	DATE:	12-18-13	DWG NO.
DRAWN BY:	KA	CKD BY:	MCC	S-01
WARD:	ASHLAND CITY	TAG NO:	00220	SHT 2 OF 2
PANEL NO.	SEE NOTE	SHOP ORDER:		REV. 0

NOTE:
4909-4909
5027-5028
5043-5045
5046-5049