

DECK PLAN

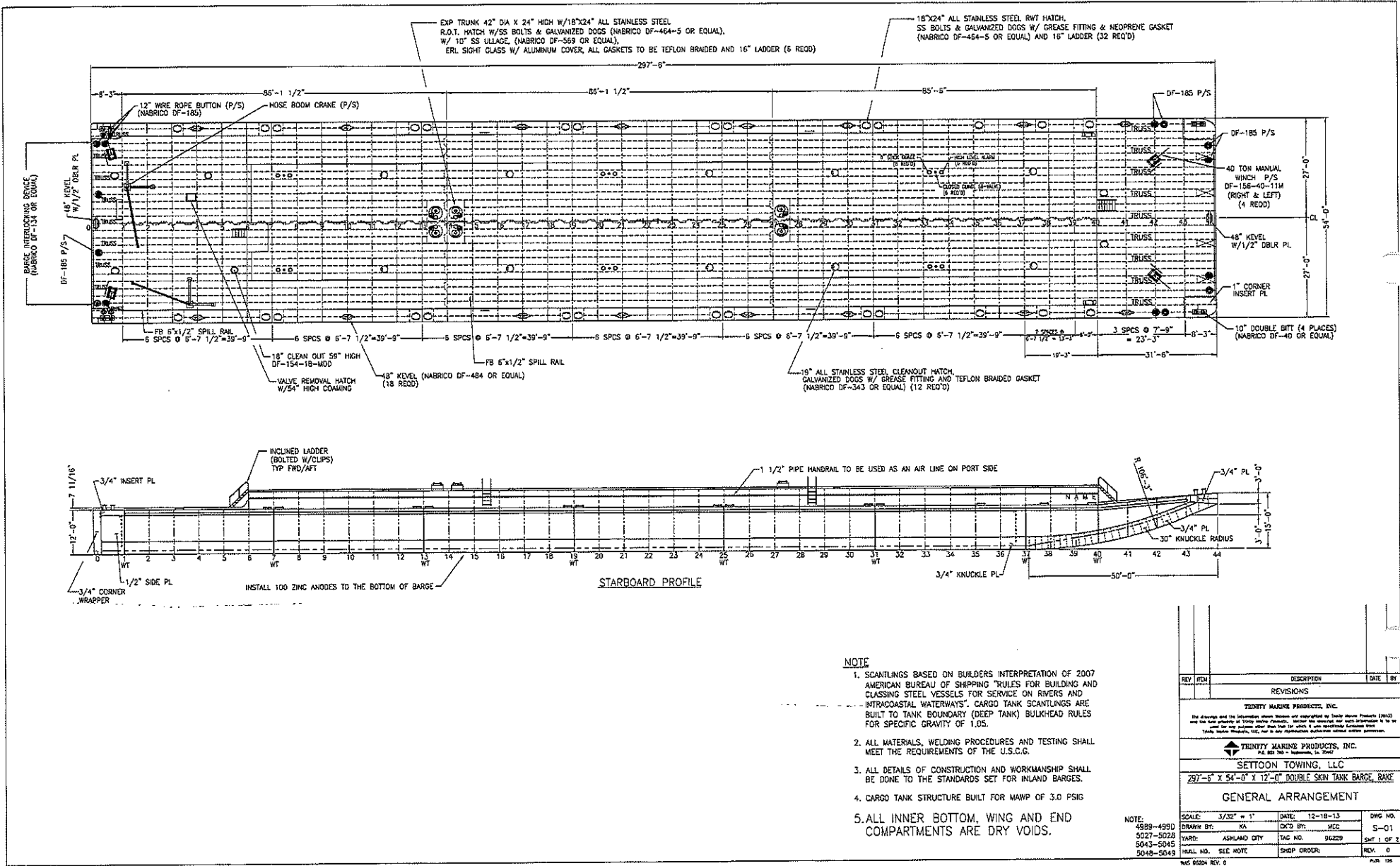
- | | | |
|--------------------------------------|--|--------------------------------------|
| V01 CARGO PUMP SUCTION VALVE | V21 CARGO HEADER STRIPPING VALVE-FWD | V41 STRIPPING VALVE-DRIP TRAYS |
| V02 CARGO PUMP DISCHARGE CHECK VALVE | V22 STRIPPING VALVE-TANK 1P | V42 STERN CARGO HEADER VALVE |
| V03 CARGO PUMP DISCHARGE VALVE | V23 STRIPPING VALVE-TANK 1S | V43 STERN VAPOR HEADER VALVE |
| V04 CARGO PUMP RELIEF VALVE | V24 STRIPPING VALVE-TANK 2P | V44 CROSSOVER BLOCK VALVE-TANK #1 |
| V05 CARGO PUMP BYPASS VALVE | V25 STRIPPING VALVE-TANK 2S | V45 AIR VALVE-STERN |
| V06 PORT CARGO HEADER VALVE | V26 STRIPPING VALVE-TANK 3P | V46 CARGO HEADER STRIPPING VALVE-AFT |
| V07 STBD CARGO HEADER VALVE | V27 STRIPPING VALVE-TANK 3S | |
| V08 CARGO LOADING VALVE | V28 STRIPPING VALVE-CARGO PUMPWELL | |
| V09 STBD DOCKSIDE HEADER VALVE | V29 STRIPPING VALVE-SUCTION FROM SYS | |
| V10 PORT DOCKSIDE HEADER VALVE | V30 STRIPPING VALVE-SUCTION FR SLOP TK | |
| V11 CARGO VALVE-TANK 1S | V31 STRIPPING VALVE-RETURN TO SYS | |
| V12 CARGO VALVE-TANK 1P | V32 STRIPPING VALVE-SUCT HOSE CONN | |
| V13 CARGO VALVE-TANK 2S | V33 STRIPPING VALVE-PUMP DISCHARGE | |
| V14 CARGO VALVE-TANK 2P | V34 STRIPPING VALVE-DISCH HOSE CONN | |
| V15 CARGO VALVE-TANK 3S | V35 STRIPPING VALVE-DISCH TO SLOP TK | |
| V16 CARGO VALVE-TANK 3P | V36 CROSSOVER BLOCK VALVE-TANK #3 | |
| V17 STBD VAPOR HEADER VALVE | V37 CROSSOVER BLOCK VALVE-TANK #2 | |
| V18 PORT VAPOR HEADER VALVE | V38 LONGITUDINAL HEADER BLOCK VALVE | |
| V19 VAPOR STACK BLOCK VALVE | V39 AIR VALVE-FORWARD | |
| V20 VAPOR P/V VALVE | V40 AIR VALVE-AFT | |

REV	DATE	DESCRIPTION	DATE	BY
1		ADDED V44,V45,V46 FOR ADDITIONAL CARGO, AIR AND STRIPPING VALVES PER CUSTOMER REQUEST.	2/10	SOB
		7/14		
REVISIONS				
<small>The drawings and the information herein are copyrighted by Trinity Marine Products (2013) and are the sole property of Trinity Marine Products. Neither the drawings nor such information is to be used for any purpose other than that for which it was specifically furnished from Trinity Marine Products, Ltd. nor is any reproduction authorized without written permission.</small>				
 TRINITY MARINE PRODUCTS, INC. <small>THE MARINE GROUP</small> <small>180 Trinity Way - Miami, FL 33155</small>				
SETTOON TOWING, LLC. 287'-6" X 54'-0" X 12'-0" D/S TANK BARGE VALVE LABEL PLATE DIAGRAM				
SCALE:	N/A	DATE:	11/14/13	DWG No.
DRAWN BY:	PDC	CHKD BY:	CC	JAPR BY:
YARD:	ARMAND CITY	TAG No.:	08229	P-01
HULL No.:		DECK NOTE:		SHOP ORDER:
				REV: 1

HULL #:
4889-90, 5027-28
5043-45, 5048-49

RELEASED TO PRODUCTION

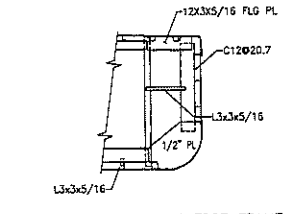
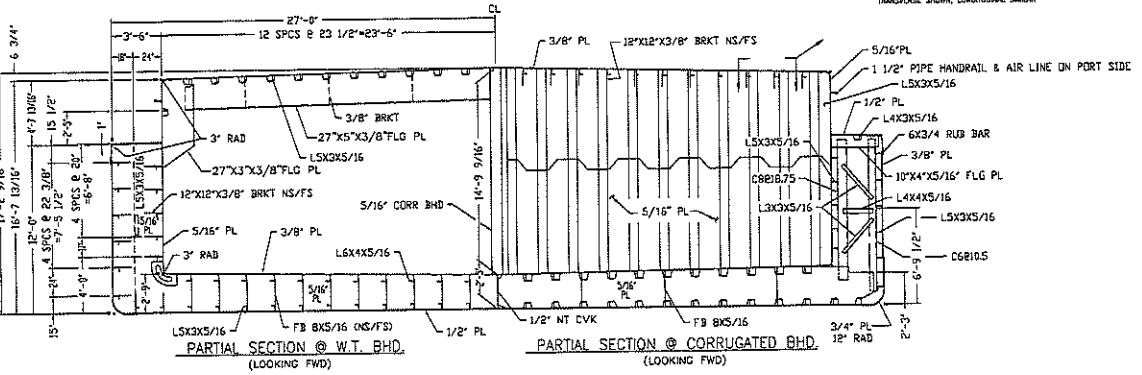
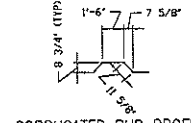
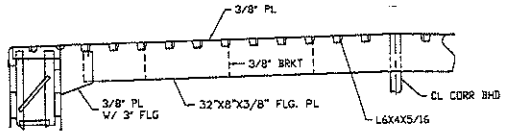
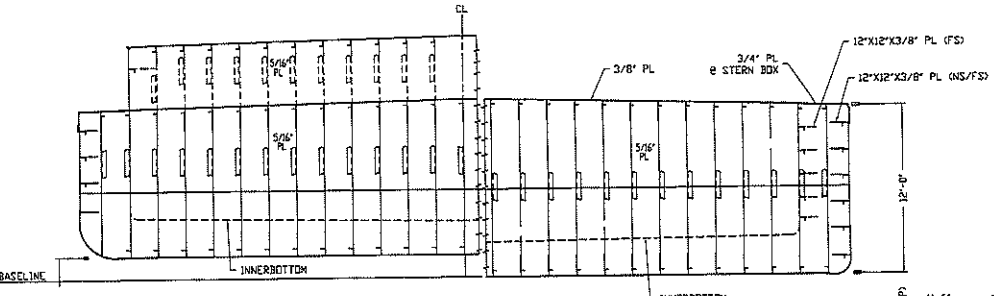
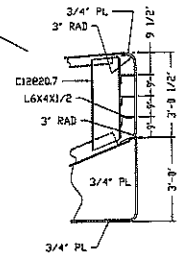
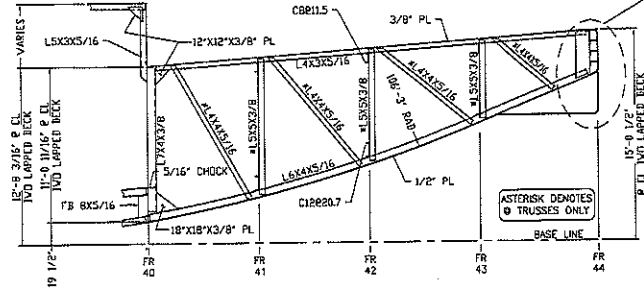
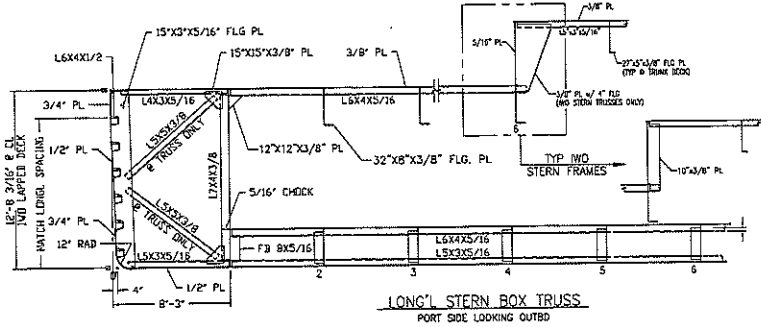
63



REV	ITEM	DESCRIPTION	DATE	BY
REVISIONS				
TENITY MARINE PRODUCTS, INC.				
<small>The drawings and the information shown herein are copyrighted by Tenity Marine Products (2002) and are not permitted to be reproduced or transmitted in any form or by any means, electronic, mechanical, photocopying, recording, or by any information storage and retrieval system, without the prior written permission of Tenity Marine Products, Inc. and its subsidiaries, affiliates, and other related parties.</small>				
 TENITY MARINE PRODUCTS, INC. <small>P.O. Box 700 - Ligonier, Pa. 15042</small>				
SETTOON TOWING, LLC 297'-6" X 54'-0" X 12'-0" DOUBLE SKIN TANK BARGE, BAKE				
GENERAL ARRANGEMENT				
SCALE:	3/32" = 1'	DATE:	12-18-13	DWG NO.
DRAWN BY:	KJ	DCD BY:	MCC	S-01
YARD:	ASHLAND CITY	TAC NO:	06229	SHT 1 OF 2
HALL NO. SEE NOTE		SHIP ORDER:		REV. 0

NOTE: 4989-4990
5027-5028
5043-5045
5048-5049

NS 6024 REV. 0



REV	REV	DESCRIPTION	DATE	BY
REVISIONS				
TRINITY MARINE PRODUCTS, INC.				
<small>The drawings and the information shown hereon are prepared by Trinity Marine Products (T.M.P.) and are the sole property of Trinity Marine Products. Without the drawing or such information, it is not valid for any purpose other than that for which it was prepared. T.M.P. shall not be held responsible for any errors or omissions.</small>				
TRINITY MARINE PRODUCTS, INC.				
<small>12, 202 Rd - Sparks, Va. 22442</small>				
SETTOON TOWING, LLC				
297'-6" X 54'-0" X 17'-0" DOUBLE SKIN TANK BARGE, RAKE				
GENERAL ARRANGEMENT				
NOTE:	SCALE: 1/4" = 1'	DATE: 12-18-13	DWG. NO.	
4989-4990	DRAWN BY: KA	CKD BY: MEC	S-01	
5027-5028	YEAR: ASHLAND CITY	TAG NO. 08229	SHT 2 OF 2	
5043-5045	HULL NO. SEE NOTE	SHOP ORDER:	REV. 0	
5046-5049	WCS BRD REV D		AUG. 14	