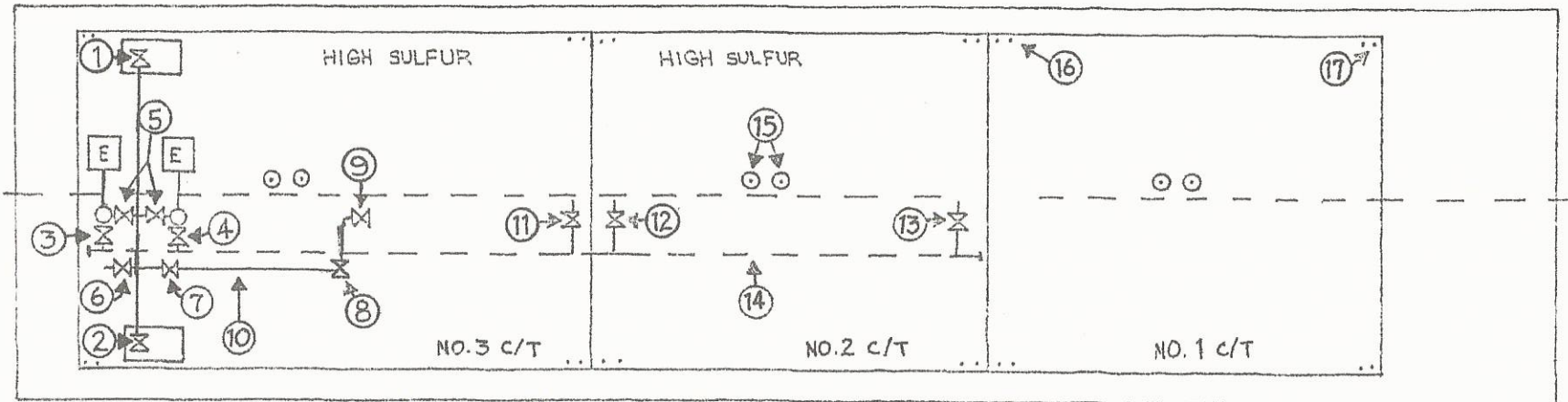


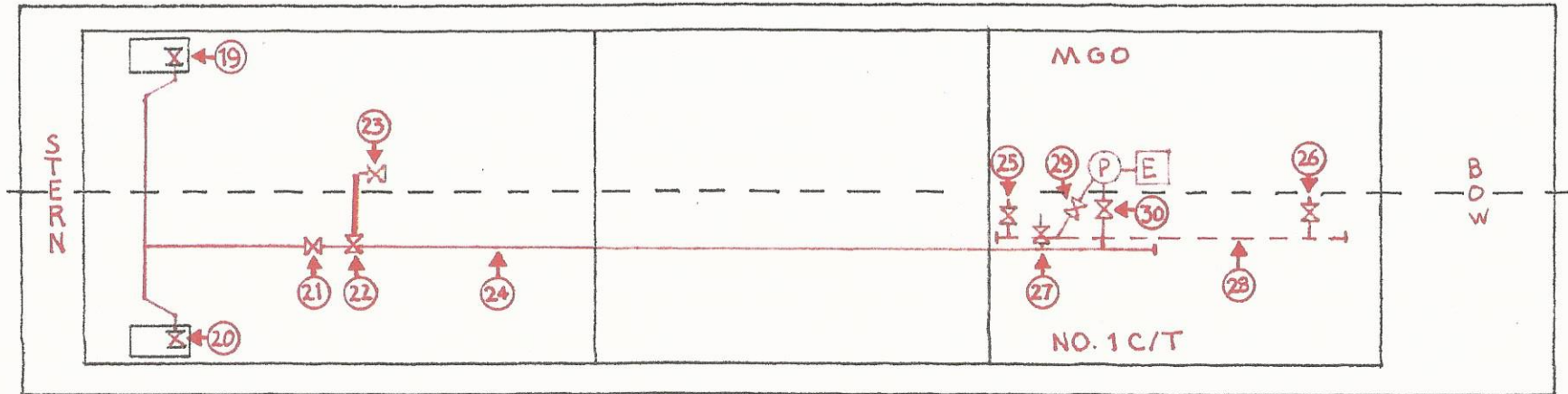
PBL - 2410  
 PIPELINE A (HIGH SULFUR)



- |                                 |  |
|---------------------------------|--|
| 1. Port Load/Disc. Header Valve | 9. Block Valve to Boom                     |
| 2. Stbd Load/Disc. Header Valve | 10. Above Deck 8" Pipeline to Boom         |
| 3. Aft. Pump Suc. Valve         | 11. NO. 3 High Sulfur Load/Suc. Valve      |
| 4. Fwd Pump Suc. Valve          | 12. No. 2 High Sulfur aft Load/Suc. Valve  |
| 5. High Sulfur Disc Valves      | 13. No. 2 High Sulfur Fwd. Load/Suc. Valve |
| 6. Load Valve                   | 14. Below Deck 12" High Sulfur Pipeline    |
| 7. Block Valve to Boom          | 15. Overfill Alarm/ Meter Sticks           |
| 8. Block Valve to Meter         | 16. T-handle oil drain plugs               |
|                                 | 17. Water drain plugs                      |

# PBL - 2410

## PIPELINE B (MGO)



- 19. Port Load/Disc. Header Valve
- 20. Stbd Load/Disc. Header Valve
- 21. Block Valve to Stern Header
- 22. Block Valve to Meter
- 23. Block Valve to Boom
- 24. Above Deck 8" Load/Disc. Pipeline
- 25. No. 1 Aft Cargo Tank Load/Suc. Valve

- 26. No. 1 Cargo Tank Load/Suc. Valve
- 27. No. 1 Cargo Tank Load Valve
- 28. No. 1 Below Deck 12" Cargo Pipeline
- 29. Below Deck MGO Pump Suc. Valve
- 30. MGO Pump Disc. Valve