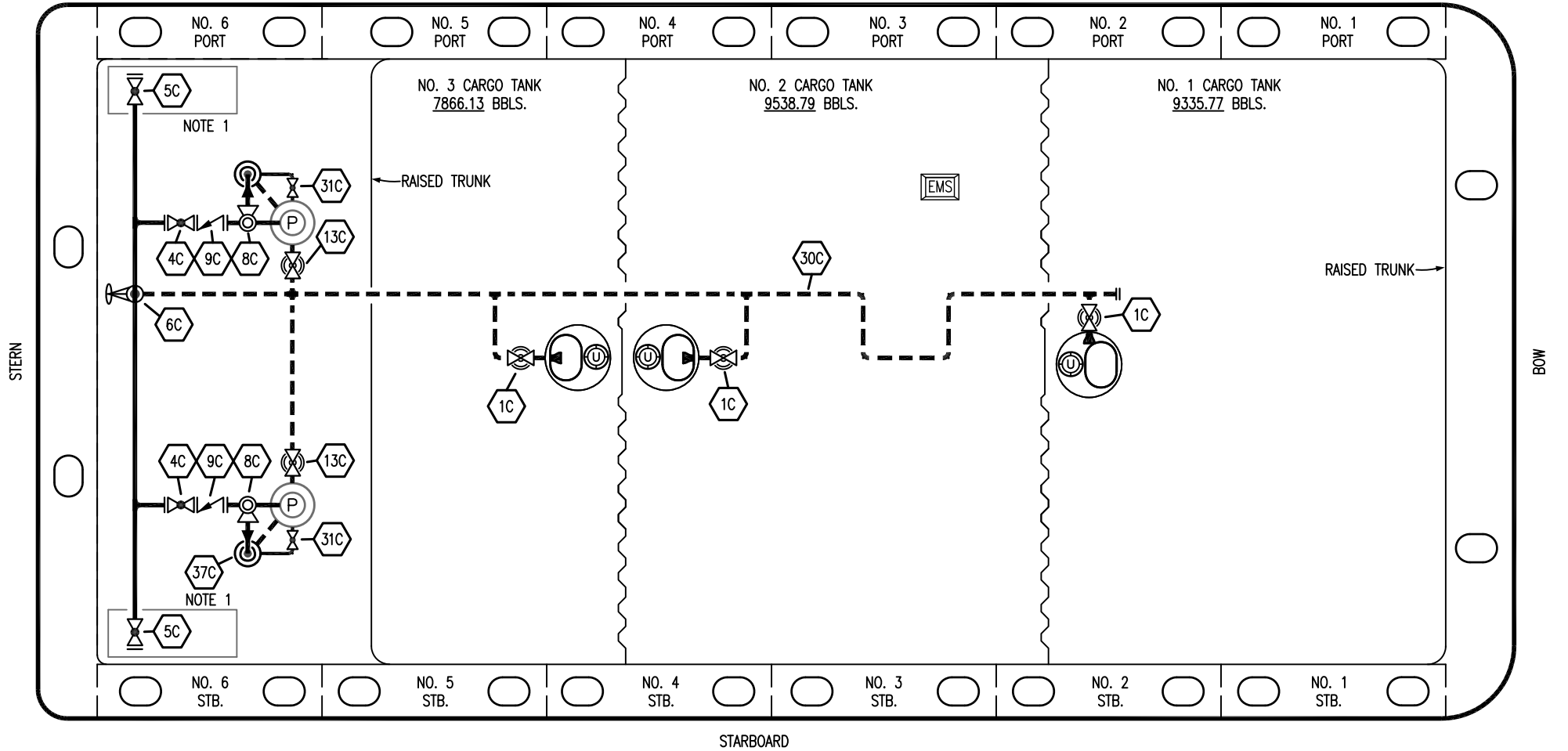



PORT



- | | | | |
|----|------------------|-------|--|
| NO | DESCRIPTION | NO | DESCRIPTION |
| 1C | CARGO TANK VALVE | 13C | CARGO PIPING BLOCK VALVE |
| 2C | LOAD VALVE | 19C | CARGO HEADER |
| 4C | DISCHARGE VALVE | 30C | CARGO PIPELINE |
| 5C | HEADER VALVE | 31C | BYPASS VALVE |
| 6C | SALVAGE VALVE | 37C | CARGO DROP  |
| 8C | RELIEF VALVE | — | — ABOVE DECK PIPING |
| 9C | CHECK VALVE | - - - | BELOW DECK PIPING |

NOTE 1: CONTAINMENT P/S
 NOTE 2: RIGGING IS TYPICAL IN EACH TANK

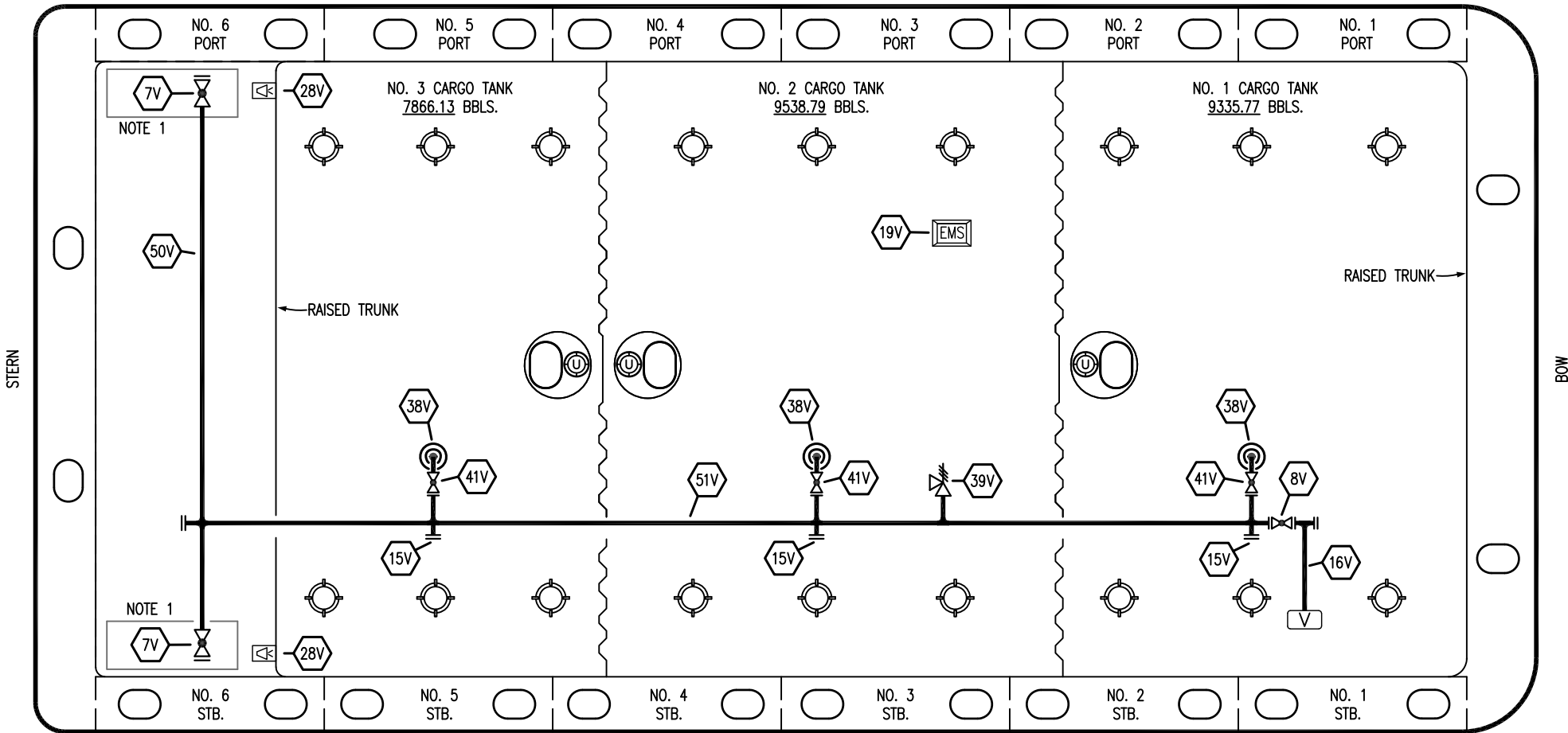
0	10/26/23	MRV	DDA	WHI	ISSUED FOR APPROVAL
REV.	DATE	BY	CHK	APP	REVISION DESCRIPTION

KIRBY INLAND MARINE 


**CARGO
PIPING FLOW DIAGRAM**


SCALE: NONE	PBL 3422	REV. 0
PAGE: 1 OF 3		

PORT



STARBOARD

- | | |
|-----|---|
| NO | DESCRIPTION |
| 7V | HEADER VALVE |
| 8V | VENT STACK VALVE |
| 15V | INSPECTION PORT |
| 16V | VAPOR VENT STACK |
| 19V | EMERGENCY ENGINE SHUT DOWN |
| 28V | DOCK CONNECTION ALARM |
| 38V | VAPOR PENETRATION  |

- | | |
|---|-----------------------|
| NO | DESCRIPTION |
| 39V | PRESSURE/VACUUM VALVE |
| 41V | VAPOR TANK VALVE |
| 50V | VAPOR HEADER |
| 51V | VAPOR PIPELINE |
|  | ABOVE DECK PIPING |

NOTE 1: CONTAINMENT P/S

NOTE 2: RIGGING IS TYPICAL IN EACH TANK

0	10/26/23	MRV	DDA	WHI	ISSUED FOR APPROVAL
REV.	DATE	BY	CHK	APP	REVISION DESCRIPTION

KIRBY INLAND MARINE 

**VAPOR
PIPING FLOW DIAGRAM**

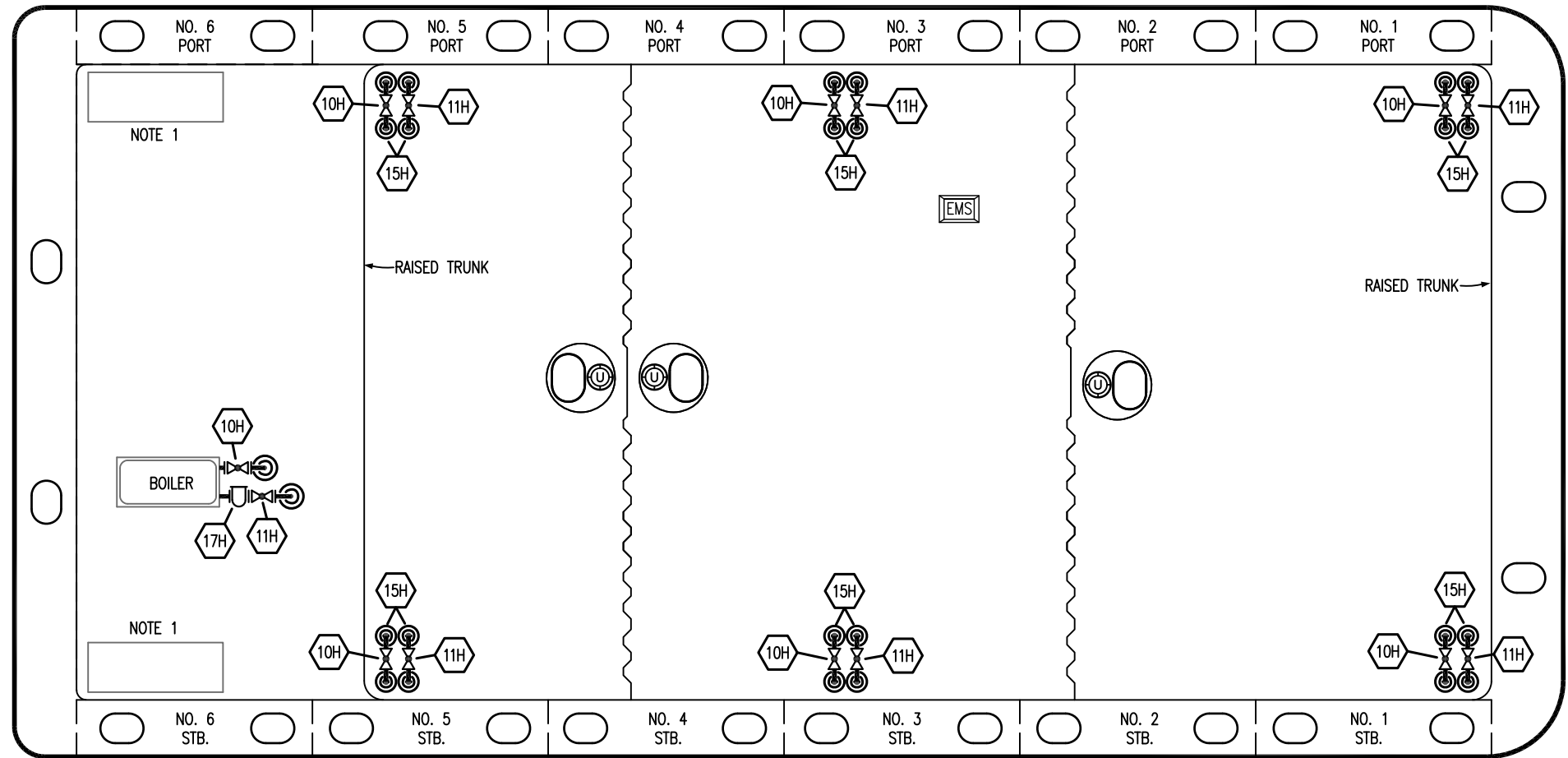
SCALE: NONE
PAGE: 2 OF 3

PBL 3422

REV. **0**



STERN

PORT




BOW

STARBOARD

NO	DESCRIPTION
10H	SUPPLY VALVE
11H	RETURN
12H	PRESSURE REGULATOR
13H	BY-PASS
15H	HOT OIL DROP 
16H	ISOLATION VALVE
17H	BASKET STRAINER
18H	CHECK VALVE
19H	DRIP PAN DRAIN VALVE
 ABOVE DECK PIPING	

NOTE 1: CONTAINMENT P/S

0	10/26/23	MRV	DDA	WHI	ISSUED FOR APPROVAL
REV.	DATE	BY	CHK	APP	REVISION DESCRIPTION

KIRBY INLAND MARINE 

HOT OIL
PIPING FLOW DIAGRAM

PBL 3422

SCALE: NONE	REV. 0
PAGE: 3 OF 3	