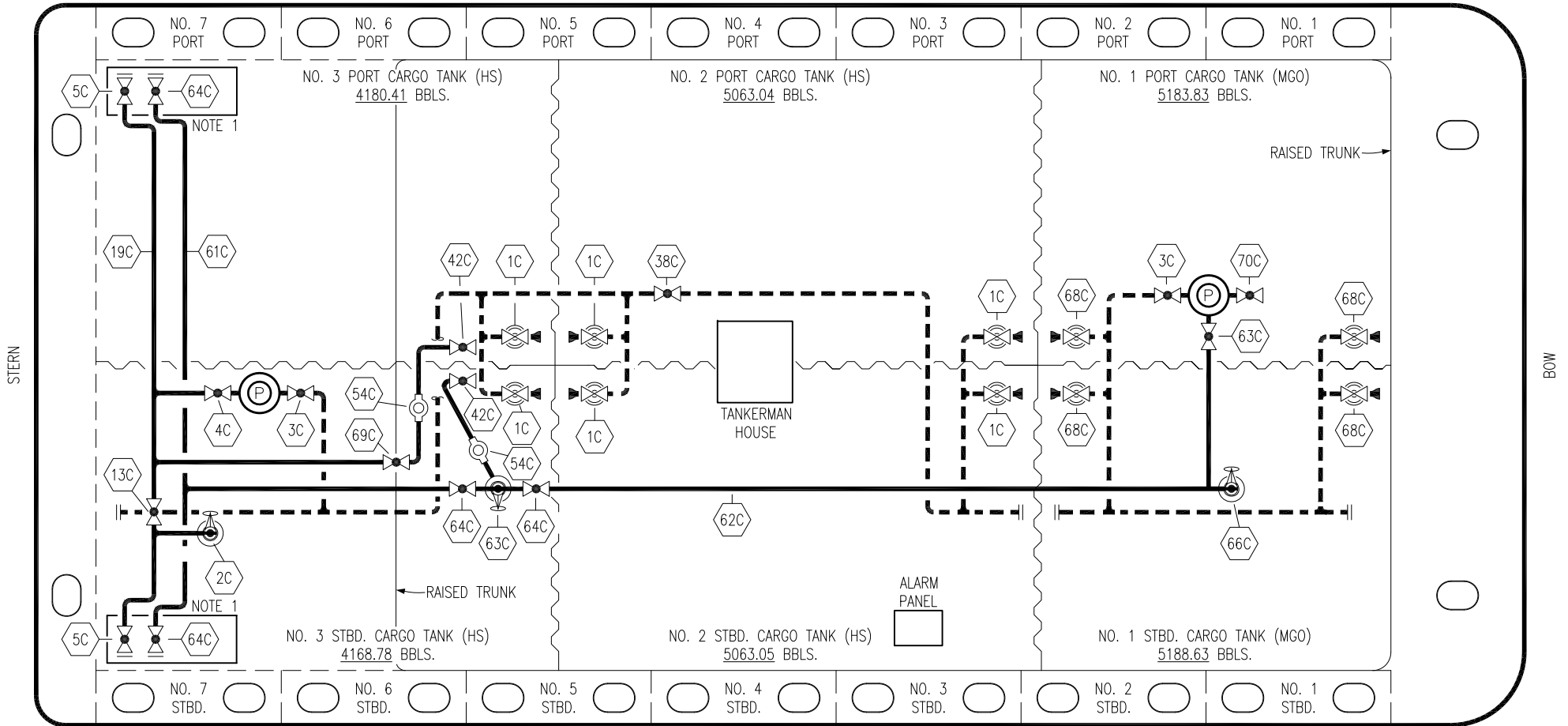


PORT



STERN

BOW

NO	DESCRIPTION	NO	DESCRIPTION
1C	CARGO TANK VALVE	42C	BOOM MASTER VALVE
2C	LOAD VALVE	54C	FLOW METER
3C	MASTER SUCTION VALVE	61C	MGO HEADER
4C	DISCHARGE VALVE	62C	MGO PIPELINE
5C	HEADER VALVE	64C	MGO HEADER VALVE
13C	CARGO PIPING BLOCK VALVE	65C	MGO BLOCK VALVE
19C	CARGO HEADER	66C	MGO LOAD VALVE
30C	CARGO PIPELINE	68C	MGO TANK VALVE
37C	CARGO DROP (⊙)	69C	HIGH SULFUR DIESEL VALVE
38C	BLOCK VALVE	70C	DEEP WELL PRIMER VALVE
<p>— ABOVE DECK PIPING</p> <p>- - - BELOW DECK PIPING</p>			

STARBOARD

NOTE 1: CONTAINMENT P/S

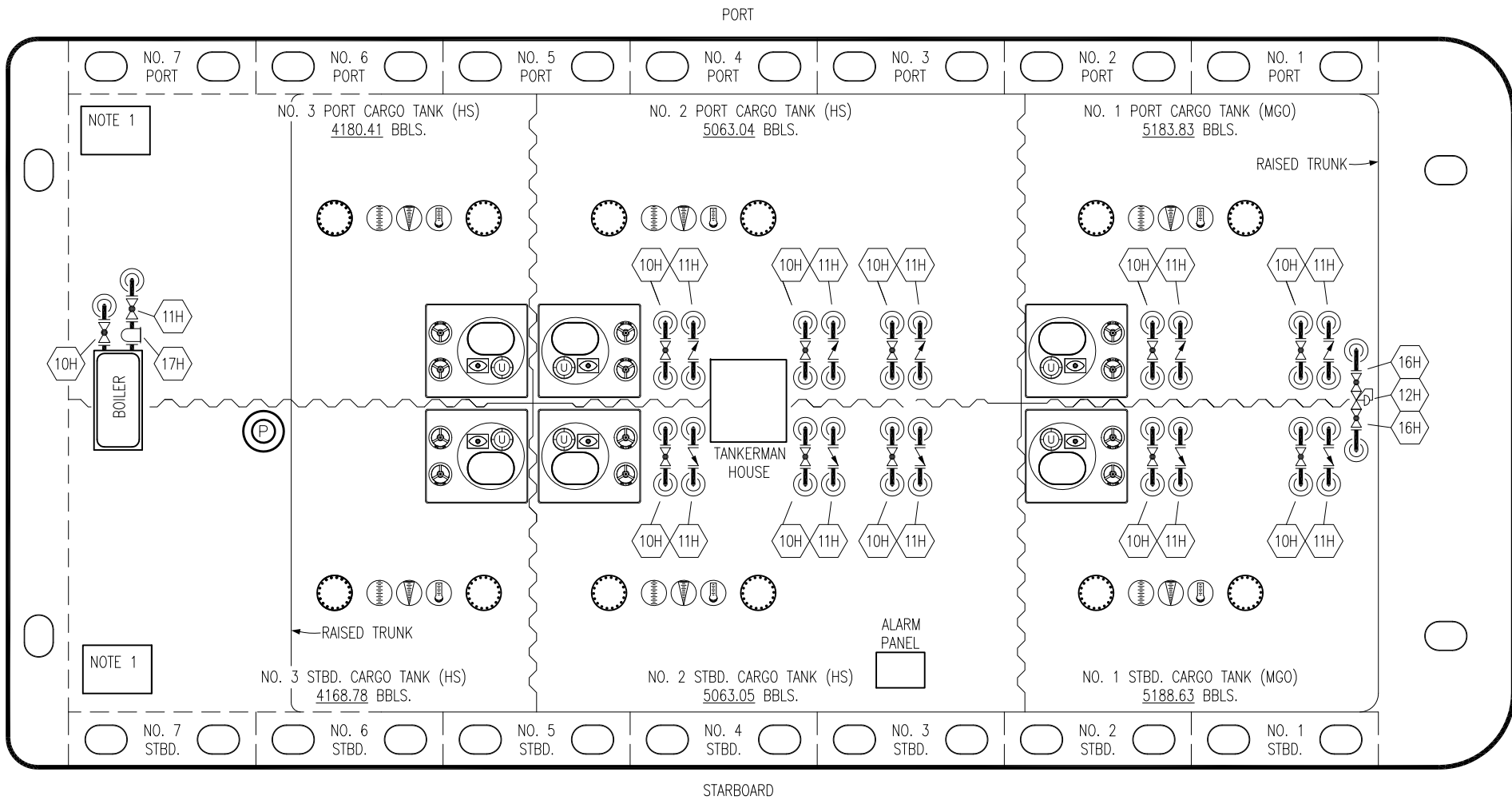
REV.	DATE	BY	CHK	APP	REVISION DESCRIPTION
1	02/07/22	MRV	DDA	JF	REVISED PER CLIENT COMMENTS
0	01/20/22	MRV	DDA	JF	ISSUED FOR APPROVAL

KIRBY INLAND MARINE

CARGO
PIPING FLOW DIAGRAM

PBL 3027

SCALE: NONE	REV. 1
PAGE: 1 OF 2	



- | | |
|----------------------------|--------------------|
| NO | DESCRIPTION |
| 10H | SUPPLY VALVE |
| 11H | RETURN |
| 12H | PRESSURE REGULATOR |
| 13H | BY-PASS |
| 16H | ISOLATION VALVE |
| 17H | BASKET STRAINER |
| — ABOVE DECK PIPING | |

NOTE 1: CONTAINMENT P/S

REV.	DATE	BY	CHK	APP	REVISION DESCRIPTION
1	02/07/22	MRV	DDA	JF	REVISED PER CLIENT COMMENTS
0	01/20/22	MRV	DDA	JF	ISSUED FOR APPROVAL

KIRBY INLAND MARINE 

**HOT OIL
PIPING FLOW DIAGRAM**

SCALE: NONE
PAGE: 2 OF 2

PBL 3027

REV. **1**