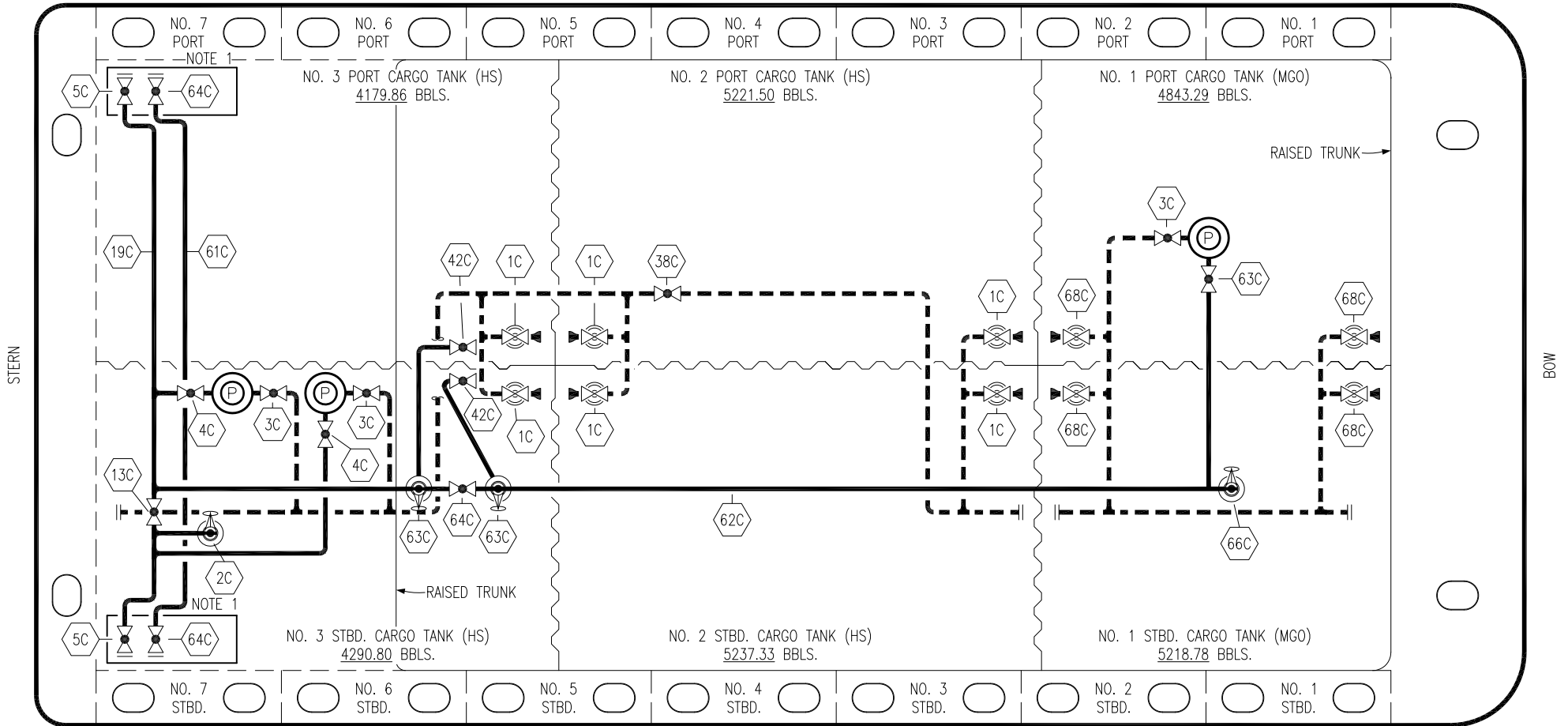


PORT



STERN

BOW

- | | | | |
|-----|--------------------------|-----|-----------------------|
| NO | DESCRIPTION | NO | DESCRIPTION |
| 1C | CARGO TANK VALVE | 61C | MGO HEADER |
| 2C | LOAD VALVE | 62C | MGO PIPELINE |
| 3C | MASTER SUCTION VALVE | 63C | MGO DISCHARGE VALVE |
| 4C | DISCHARGE VALVE | 64C | MGO HEADER VALVE |
| 5C | HEADER VALVE | 65C | MGO BLOCK VALVE |
| 13C | CARGO PIPING BLOCK VALVE | 66C | MGO LOAD VALVE |
| 19C | CARGO HEADER | 68C | MGO TANK VALVE |
| 30C | CARGO PIPELINE | — | — ABOVE DECK PIPING |
| 37C | CARGO DROP (P) | --- | --- BELOW DECK PIPING |
| 38C | BLOCK VALVE | | |
| 42C | BOOM MASTER VALVE | | |
| 54C | METER | | |

STARBOARD

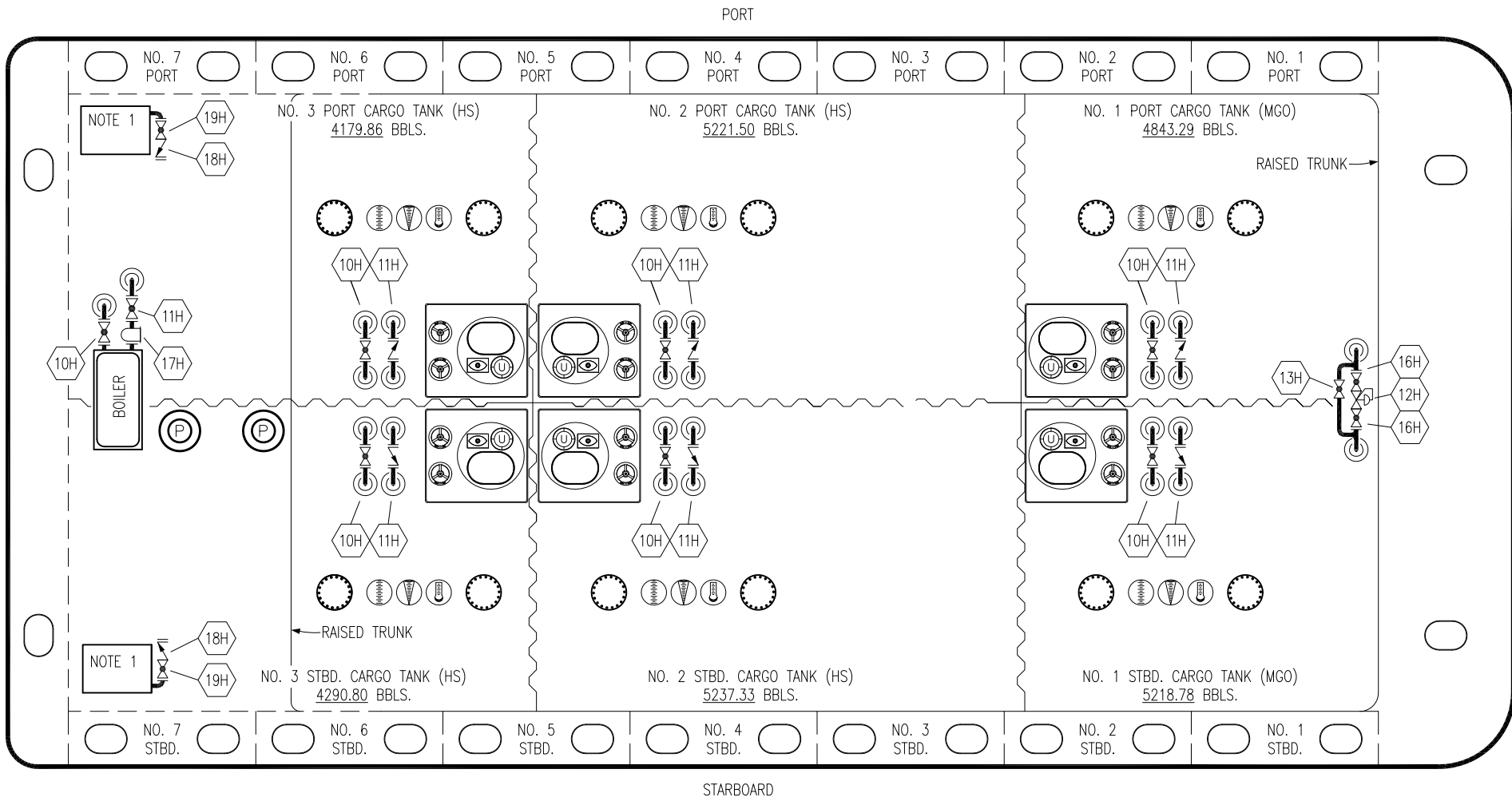
NOTE 1: CONTAINMENT P/S

0	11/19/21	MRV	DDA	KW	ISSUED FOR APPROVAL
REV.	DATE	BY	CHK	APP	REVISION DESCRIPTION

KIRBY INLAND MARINE

**CARGO
PIPING FLOW DIAGRAM**

SCALE: NONE	PBL 3026	REV. 0
PAGE: 1 OF 2		



- | | |
|--|----------------------|
| NO | DESCRIPTION |
| 10H | SUPPLY VALVE |
| 11H | RETURN |
| 12H | PRESSURE REGULATOR |
| 13H | BY-PASS |
| 16H | ISOLATION VALVE |
| 17H | BASKET STRAINER |
| 18H | CHECK VALVE |
| 19H | DRIP PAN DRAIN VALVE |
| <hr style="width: 50px; display: inline-block; vertical-align: middle; margin-right: 5px;"/> ABOVE DECK PIPING | |

REV.	DATE	BY	CHK	APP	REVISION DESCRIPTION
0	11/19/21	MRV	DDA	KW	ISSUED FOR APPROVAL

KIRBY INLAND MARINE	
HOT OIL PIPING FLOW DIAGRAM	
SCALE: NONE PAGE: 2 OF 2	PBL 3026
REV. 0	