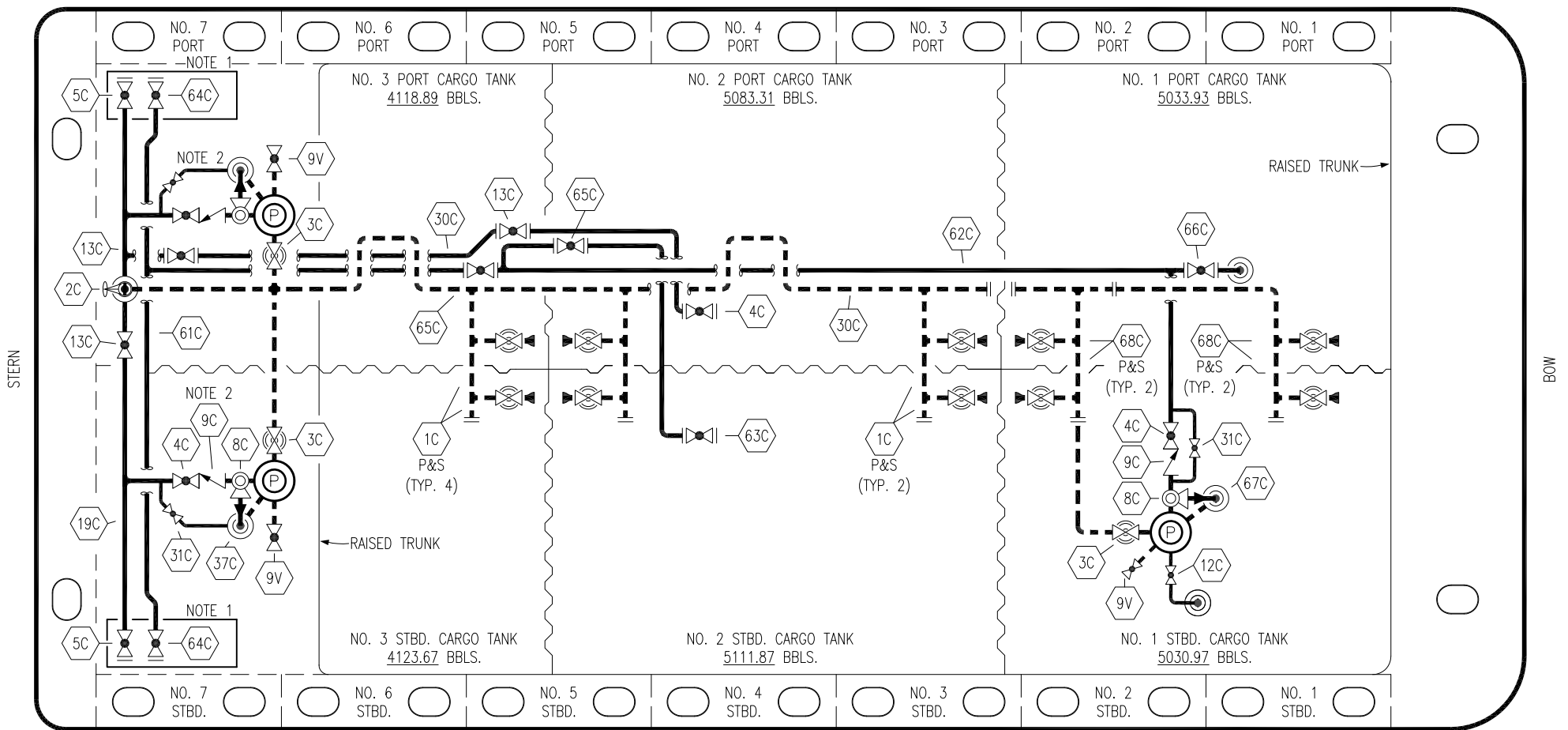


PORT



STERN

BOW

NO	DESCRIPTION	NO	DESCRIPTION
1C	CARGO TANK VALVE	31C	BYPASS VALVE
2C	LOAD VALVE	37C	CARGO DROP
3C	MASTER SUCTION VALVE	61C	MGO HEADER
4C	DISCHARGE VALVE	62C	MGO PIPELINE
5C	HEADER VALVE	63C	MGO DISCHARGE
8C	RELIEF VALVE	64C	MGO HEADER VALVE
9C	CHECK VALVE	65C	MGO BLOCK VALVE
9V	DEEP WELL CAN DRAIN	66C	MGO LOAD VALVE
12C	BURP VALVE RETURN TO CARGO TANK	67C	CARGO RELIEF TANK RETURN
13C	CARGO PIPING BLOCK VALVE - SALVAGE VALVE	68C	MGO TANK VALVE
19C	CARGO HEADER	---	ABOVE DECK PIPING
30C	CARGO PIPELINE	---	BELOW DECK PIPING

STARBOARD

NOTE 2: TYPICAL RIGGING FOR CARGO PUMPS
 NOTE 1: CONTAINMENT P/S

REV.	DATE	BY	CHK	APP	REVISION DESCRIPTION
0	07/14/21	MRV	DDA	JF	ISSUED FOR APPROVAL

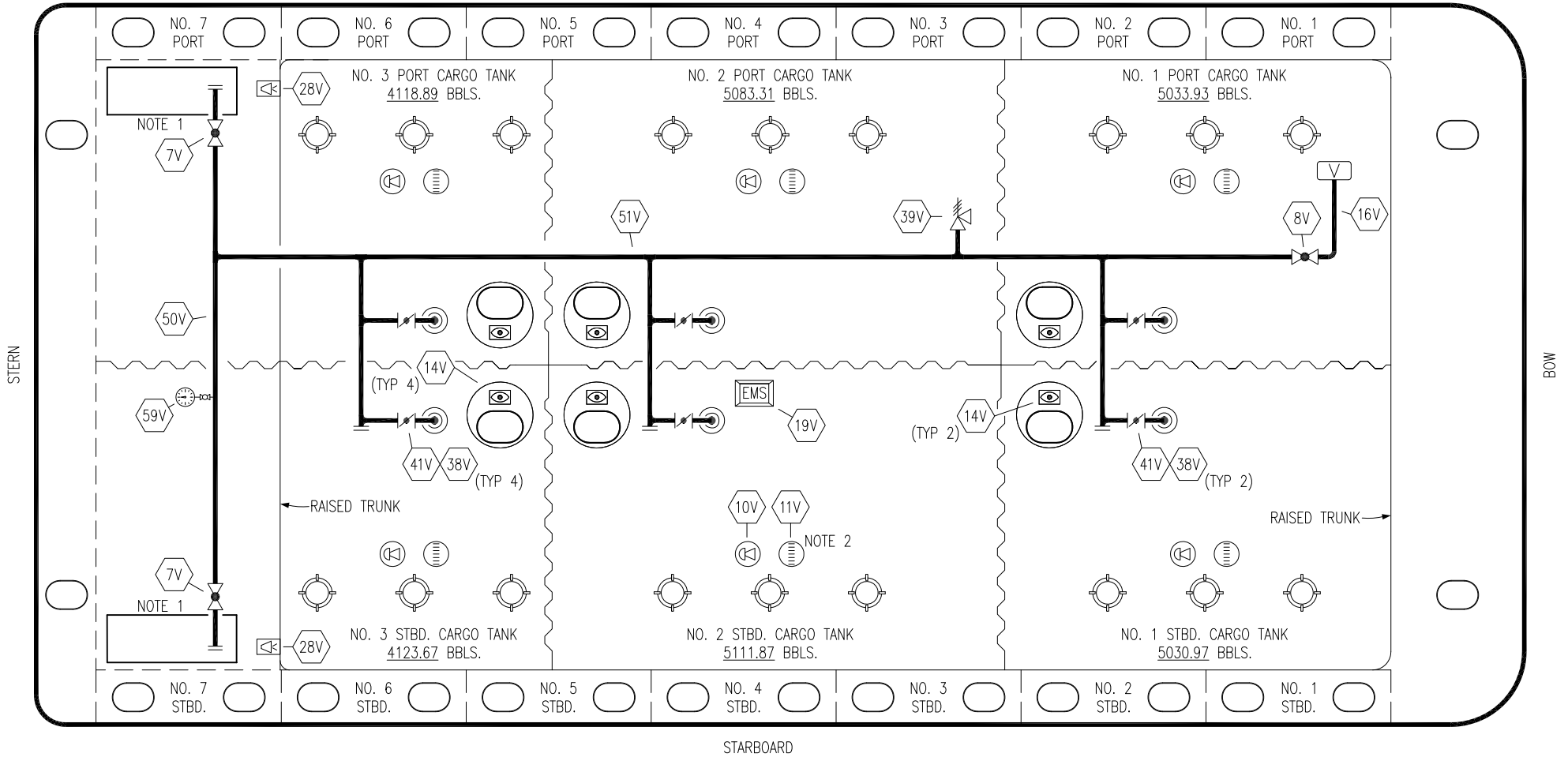
KIRBY INLAND MARINE

CARGO
PIPING FLOW DIAGRAM

PBL 3011

SCALE: NONE	REV. 0
PAGE: 1 OF 1	

PORT



STARBOARD

NO	DESCRIPTION	NO	DESCRIPTION
7V	HEADER VALVE	38V	VAPOR PENETRATION
8V	VENT STACK VALVE	39V	PRESSURE/VACUUM VALVE
10V	HIGH LEVEL/OVERFILL ALARM	41V	VAPOR TANK VALVE
11V	1-METER GAUGE STICK	50V	VAPOR HEADER
14V	SIGHT GLASS	51V	VAPOR PIPELINE
19V	EMERGENCY ENGINE SHUT DOWN	59V	PRESS/VAC GAUGE
28V	DOCK CONNECTION ALARM	—	ABOVE DECK PIPING

NOTE 2: TYPICAL RIGGING IN EACH TANK

NOTE 1: CONTAINMENT P/S

0	07/14/21	MRV	DDA	JF	ISSUED FOR APPROVAL
REV.	DATE	BY	CHK	APP	REVISION DESCRIPTION

KIRBY INLAND MARINE 

**VAPOR
PIPING FLOW DIAGRAM**

SCALE: NONE
PAGE: 2 OF 2

PBL 3011

REV. **0**