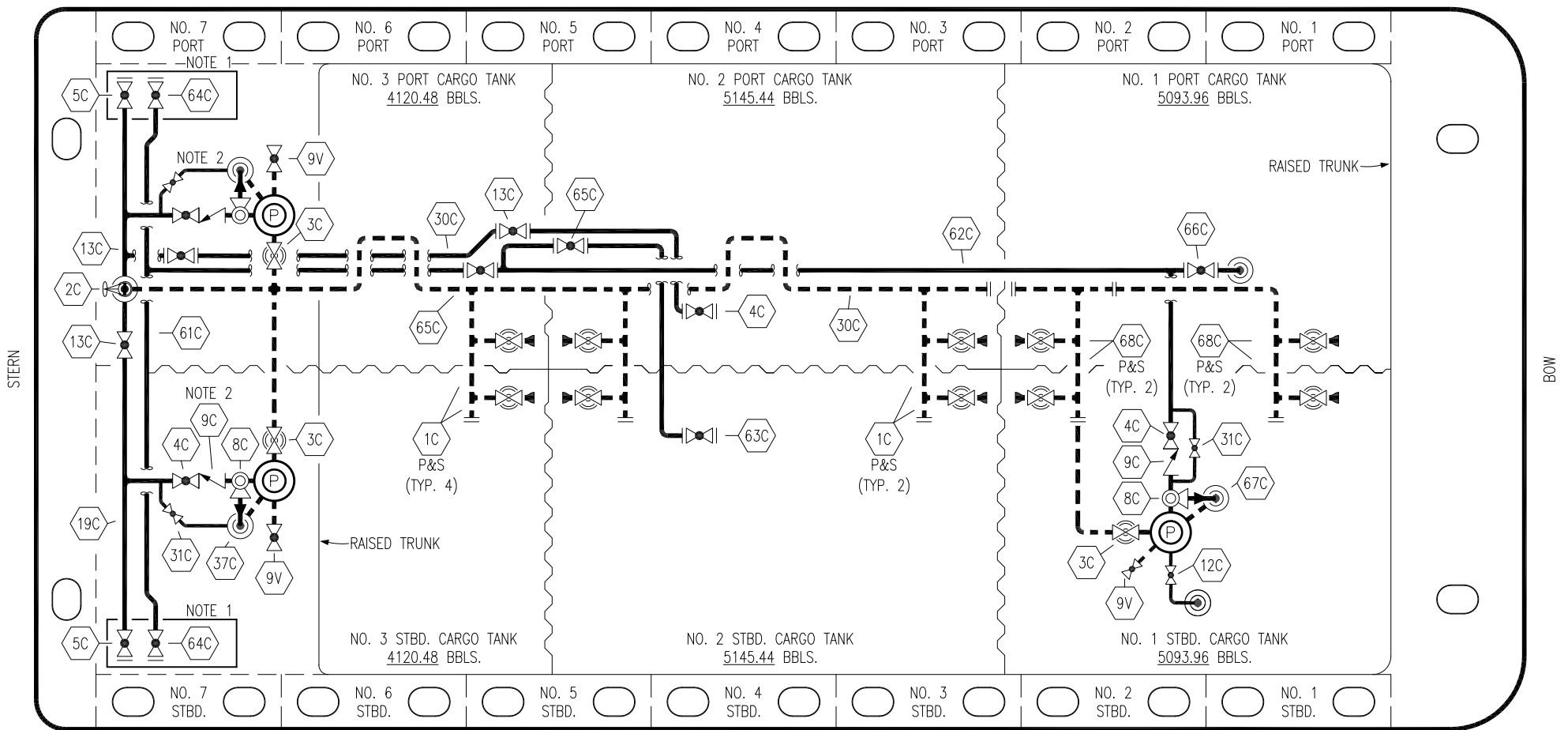


PORT



STERN

BOW

STARBOARD

- | | | | |
|-----|--|-----|--------------------------|
| NO | DESCRIPTION | NO | DESCRIPTION |
| 1C | CARGO TANK VALVE | 31C | BYPASS VALVE |
| 2C | LOAD VALVE | 37C | CARGO DROP |
| 3C | MASTER SUCTION VALVE | 61C | MGO HEADER |
| 4C | DISCHARGE VALVE | 62C | MGO PIPELINE |
| 5C | HEADER VALVE | 63C | MGO DISCHARGE |
| 8C | RELIEF VALVE | 64C | MGO HEADER VALVE |
| 9C | CHECK VALVE | 65C | MGO BLOCK VALVE |
| 9V | DEEP WELL CAN DRAIN | 66C | MGO LOAD VALVE |
| 12C | BURP VALVE RETURN TO CARGO TANK | 67C | CARGO RELIEF TANK RETURN |
| 13C | CARGO PIPING BLOCK VALVE - SALVAGE VALVE | 68C | MGO TANK VALVE |
| 19C | CARGO HEADER | --- | ABOVE DECK PIPING |
| 30C | CARGO PIPELINE | --- | BELOW DECK PIPING |

NOTE 2: TYPICAL RIGGING FOR CARGO PUMPS
NOTE 1: CONTAINMENT P/S

REV.	DATE	BY	CHK	APP	REVISION DESCRIPTION
1	06/03/21	MRV	DDA	MW	REVISED PER CLIENT COMMENTS
0	12/03/20	MRV	DDA	MW	ISSUED FOR APPROVAL

KIRBY INLAND MARINE

CARGO
PIPING FLOW DIAGRAM

PBL 3010

REV. 1

SCALE: NONE	
PAGE: 1 OF 1	