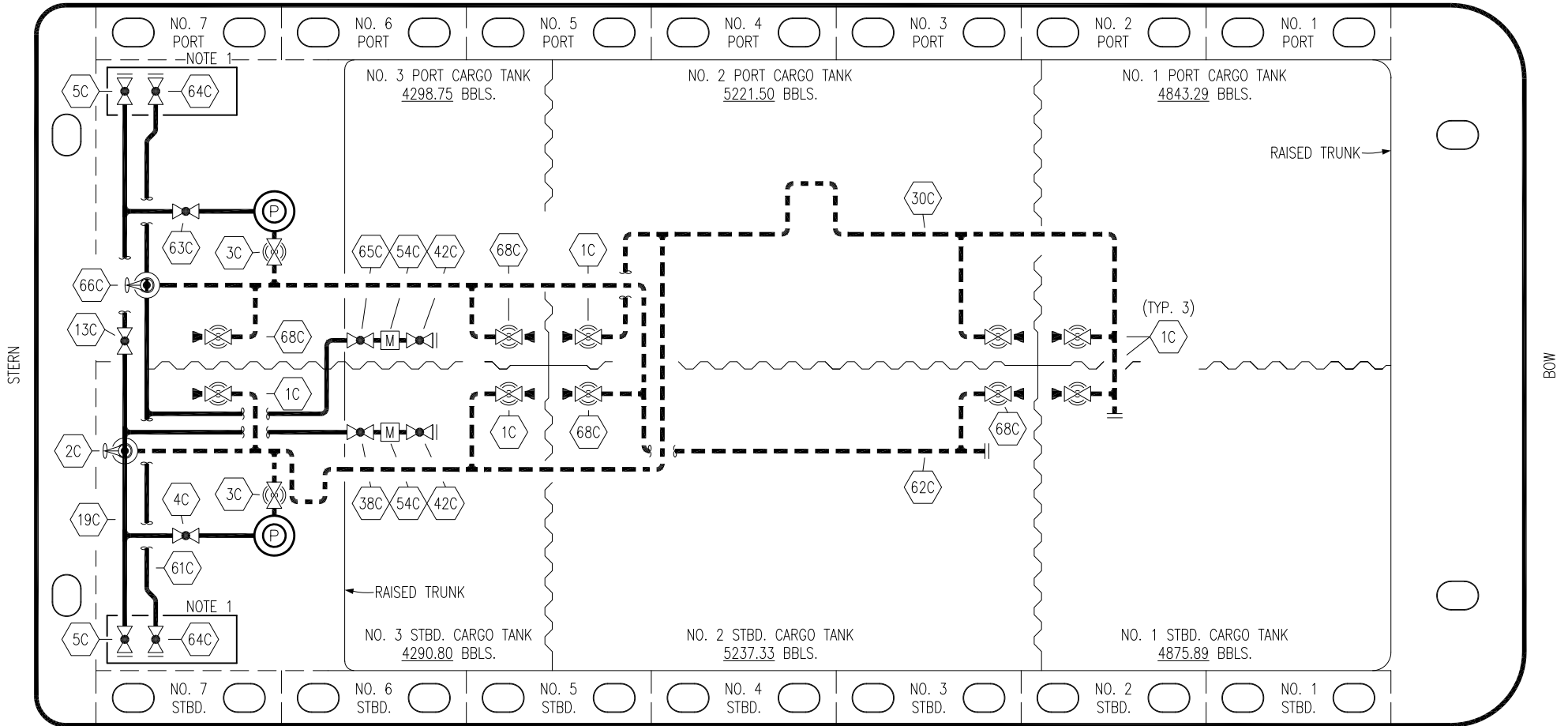



PORT



STERN


BOW

STARBOARD

- | | | | |
|-----|--|-------|---------------------|
| NO | DESCRIPTION | NO | DESCRIPTION |
| 1C | CARGO TANK VALVE | 61C | MGO HEADER |
| 2C | LOAD VALVE | 62C | MGO PIPELINE |
| 3C | MASTER SUCTION VALVE | 63C | MGO DISCHARGE VALVE |
| 4C | DISCHARGE VALVE | 64C | MGO HEADER VALVE |
| 5C | HEADER VALVE | 65C | MGO BLOCK VALVE |
| 19C | CARGO HEADER | 66C | MGO LOAD VALVE |
| 30C | CARGO PIPELINE | 68C | MGO TANK VALVE |
| 37C | CARGO DROP  | — | ABOVE DECK PIPING |
| 38C | BLOCK VALVE | - - - | BELOW DECK PIPING |
| 42C | BOOM MASTER VALVE | | |
| 54C | METER | | |

NOTE 1: CONTAINMENT P/S

0	06/11/21	MRV	DDA	KW	ISSUED FOR APPROVAL
REV.	DATE	BY	CHK	APP	REVISION DESCRIPTION

 KIRBY INLAND MARINE	
CARGO PIPING FLOW DIAGRAM	
SCALE: NONE PAGE: 1 OF 1	PBL 3002
	REV. 0