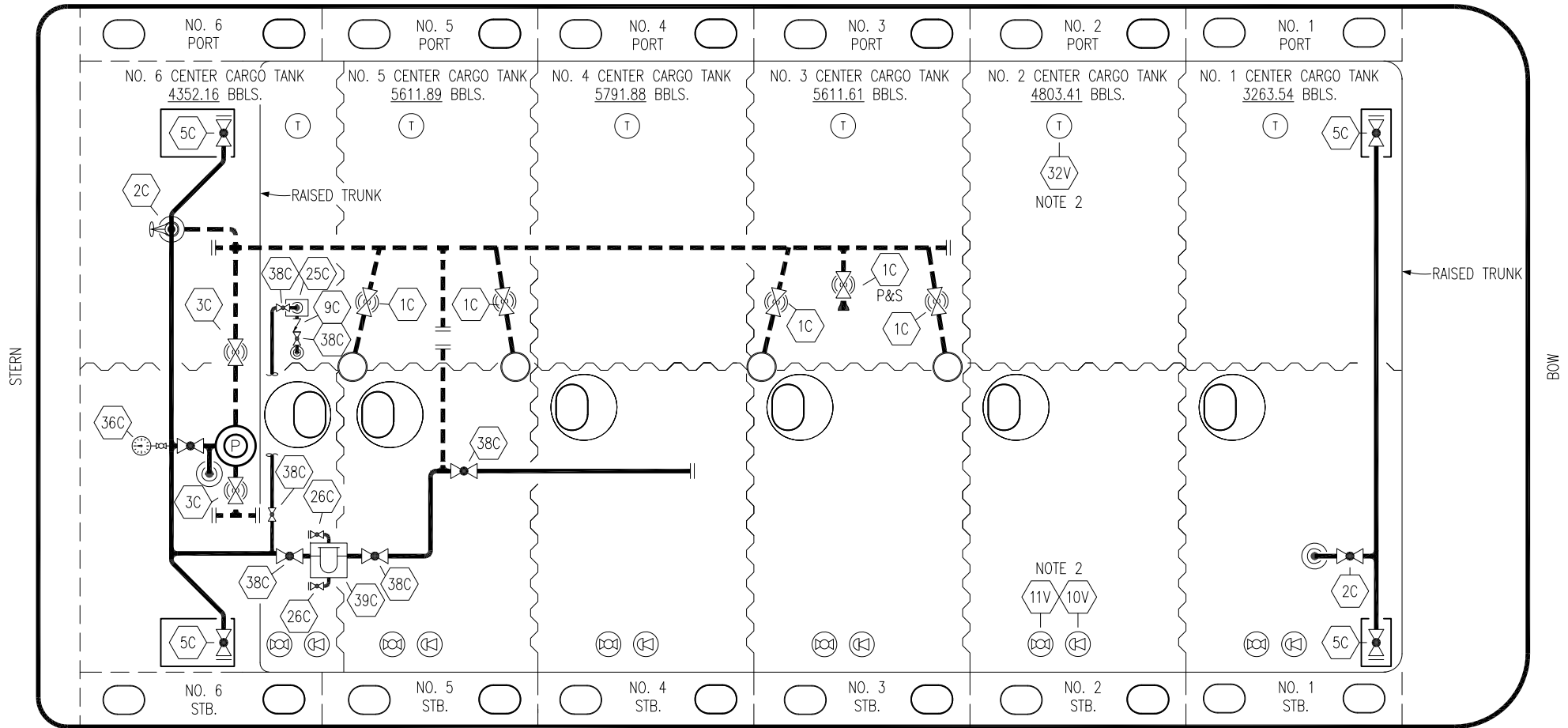


PORT



STERN

BOW

NO	DESCRIPTION	NO	DESCRIPTION
1C	CARGO TANK VALVE	37C	CARGO DROP
2C	LOAD VALVE	38C	BLOCK VALVE
3C	MASTER SUCTION VALVE	39C	STRAINER
4C	DISCHARGE VALVE	41C	SUCTION BLOCK VALVE
5C	HEADER VALVE	54C	METER
8C	RELIEF VALVE	58C	CARGO SUPPLY VALVE
9C	CHECK VALVE	—	—
25C	SAMPLE POINT OR POT	—	—
26C	DRAIN VALVE	—	—
36C	PRESSURE GAUGE	—	—

NO	DESCRIPTION	STARBOARD
10V	HIGH LEVEL/OVERFILL ALARM	
11V	1-METER GAUGE STICK	
32V	TEMPERATURE GAUGE	

NOTE 2: TYPICAL RIGGING IN EACH TANK

NOTE 1: CONTAINMENT P/S

0	05/04/22	MRV	DDA	MW	ISSUED FOR APPROVAL
REV.	DATE	BY	CHK	APP	REVISION DESCRIPTION

KIRBY INLAND MARINE 

**(MGO) CARGO  
PIPING FLOW DIAGRAM**

SCALE: NONE  
PAGE: 1 OF 2

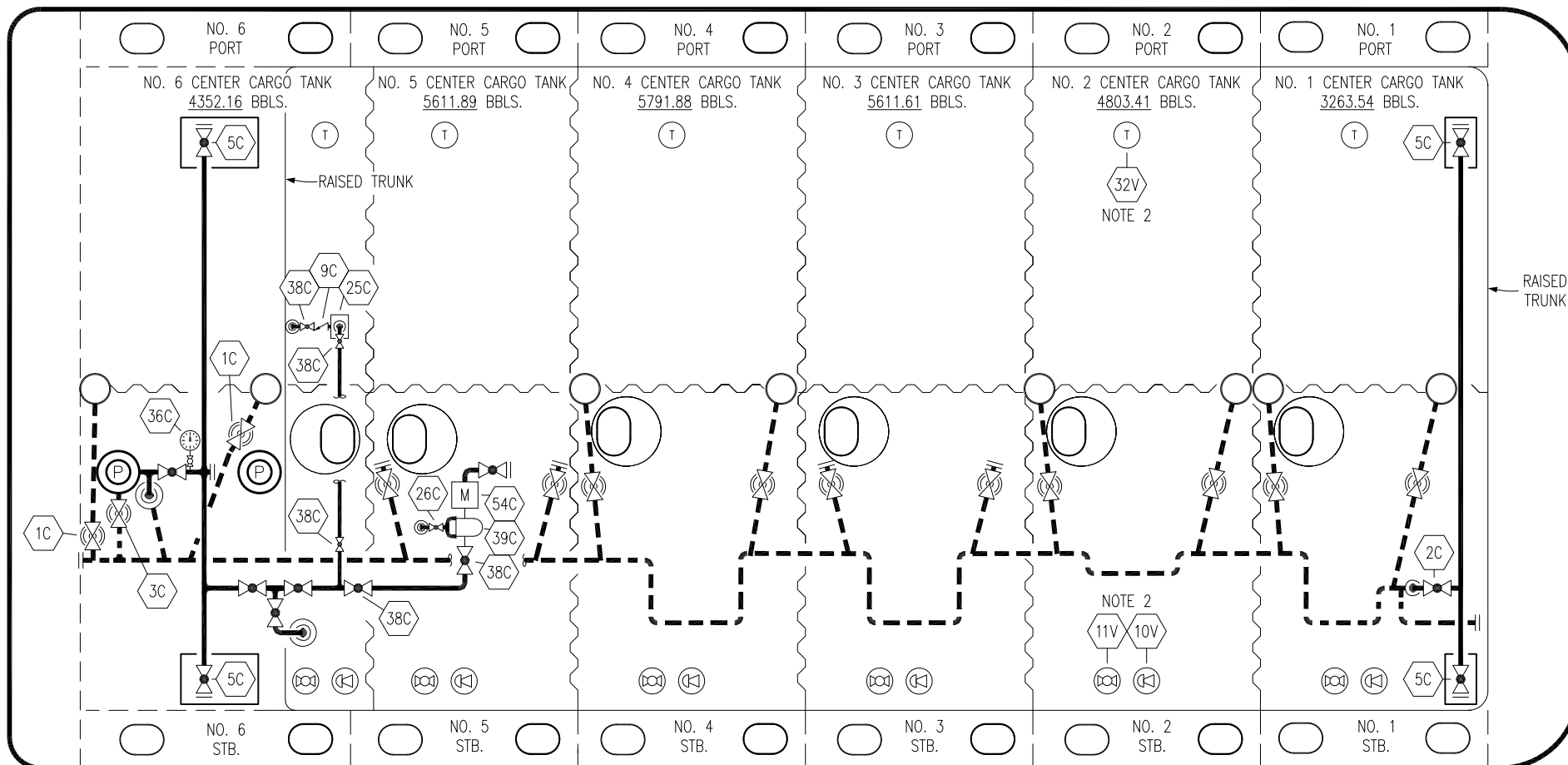
**PBL 3001**

REV. **0**

PORT

STERN

BOW




NO	DESCRIPTION	NO	DESCRIPTION
1C	CARGO TANK VALVE	37C	CARGO DROP
2C	LOAD VALVE	38C	BLOCK VALVE
3C	MASTER SUCTION VALVE	39C	STRAINER
4C	DISCHARGE VALVE	41C	SUCTION BLOCK VALVE
5C	HEADER VALVE	54C	METER
8C	RELIEF VALVE	58C	CARGO SUPPLY VALVE
9C	CHECK VALVE	—	—
25C	SAMPLE POINT OR POT	—	—
26C	DRAIN VALVE	—	—
36C	PRESSURE GAUGE	—	—

NO	DESCRIPTION	STARBOARD
10V	HIGH LEVEL/OVERFILL ALARM	
11V	1-METER GAUGE STICK	
32V	TEMPERATURE GAUGE	

NOTE 2: TYPICAL RIGGING IN EACH TANK  
 NOTE 1: CONTAINMENT P/S

0	05/04/22	MRV	DDA	MW	ISSUED FOR APPROVAL
REV.	DATE	BY	CHK	APP	REVISION DESCRIPTION

**KIRBY INLAND MARINE** 

**(HIGH SULFUR) CARGO PIPING FLOW DIAGRAM**

SCALE: NONE

**PBL 3001**

REV. **0**

PAGE: 2 OF 2