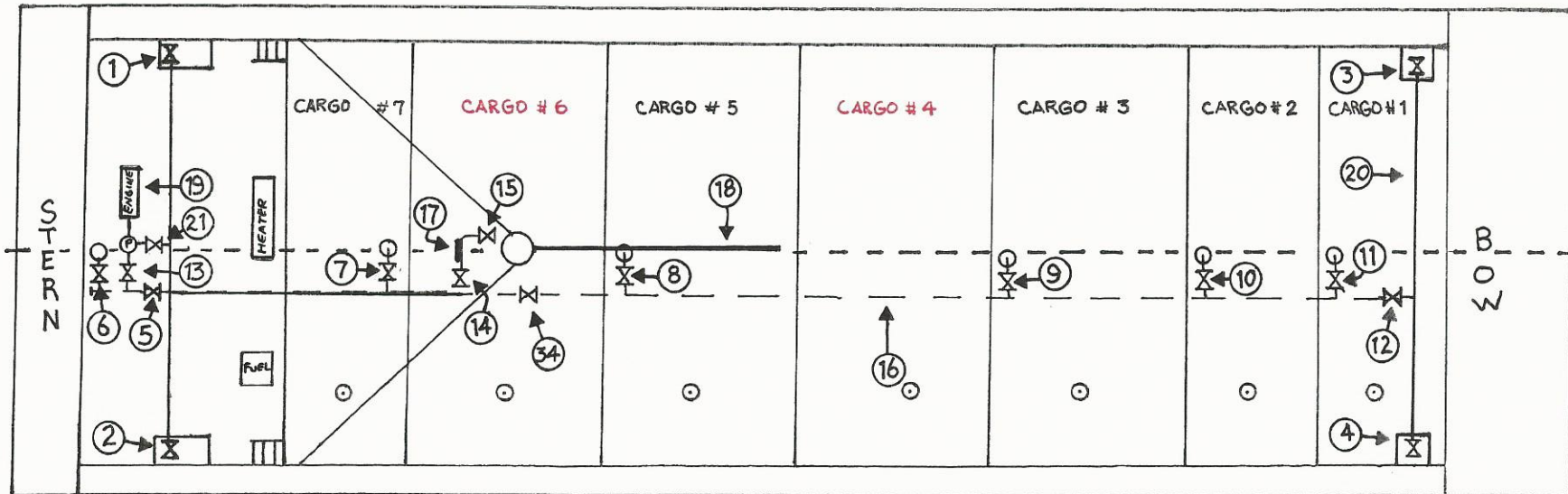


PBL - 2402

PIPELINE A (HIGH SULFUR)

- | | |
|---|--|
| <ol style="list-style-type: none"> 1. PORT STERN LOAD/DISCHARGE HEADER VALVE 2. STBD STERN LOAD/DISCHARGE HEADER VALVE 3. PORT BOW LOAD/DISCHARGE HEADER VALVE 4. STBD BOW LOAD/DISCHARGE HEADER VALVE 5. LOW SULFUR LOAD VALVE 6. NO. 7 CARGO TANK AFT LOAD/SUC. VALVE 7. NO. 7 CARGO TANK FWD LOAD/SUC. VALVE 8. NO. 5 CARGO TANK LOAD/SUC. VALVE 9. NO. 3 CARGO TANK LOAD/SUC. VALVE 10. NO. 2 CARGO TANK LOAD/SUC. VALVE 11. NO. 1 CARGO TANK LOAD/SUC. VALVE 12. BOW HEADER LOAD VALVE | <ol style="list-style-type: none"> 13. LOW SULFUR PUMP SUC. VALVE 14. ABOVE DECK BLOCK VALVE TO METER 15. ABOVE DECK BLOCK VALVE TO BOOM 16. BELOW DECK 12" CARGO PIPELINE 17. LOW SULFUR METER 18. LOW SULFUR BOOM 19. LOW SULFUR PUMP ENGINE 20. BOW LOW SULFUR HEADER 21. LOW SULFUR DISCHARGE VALVE |
|---|--|



PBL - 2402

PIPELINE B (MGO)

- 22. PORT STERN LOAD/DISCHARGE HEADER VALVE
- 23. STBD STERN LOAD/DISCHARGE HEADER VALVE
- 24. GAS OIL LOAD VALVE
- 25. GAS OIL PUMP DISCHARGE VALVE
- 26. GAS OIL PUMP SUC. VALVE
- 27. NO. 6 CARGO TANK LOAD/SUC. VALVE
- 28. NO. 4 CARGO TANK LOAD/SUC. VALVE
- 29. GAS OIL BLOCK VALVE TO METER
- 30. GAS OIL BLOCK VALVE TO BOOM
- 31. GAS OIL BOOM
- 32. GAS OIL PUMP ENGINE
- 33. BELOW DECK 12" GAS OIL PIPELINE

