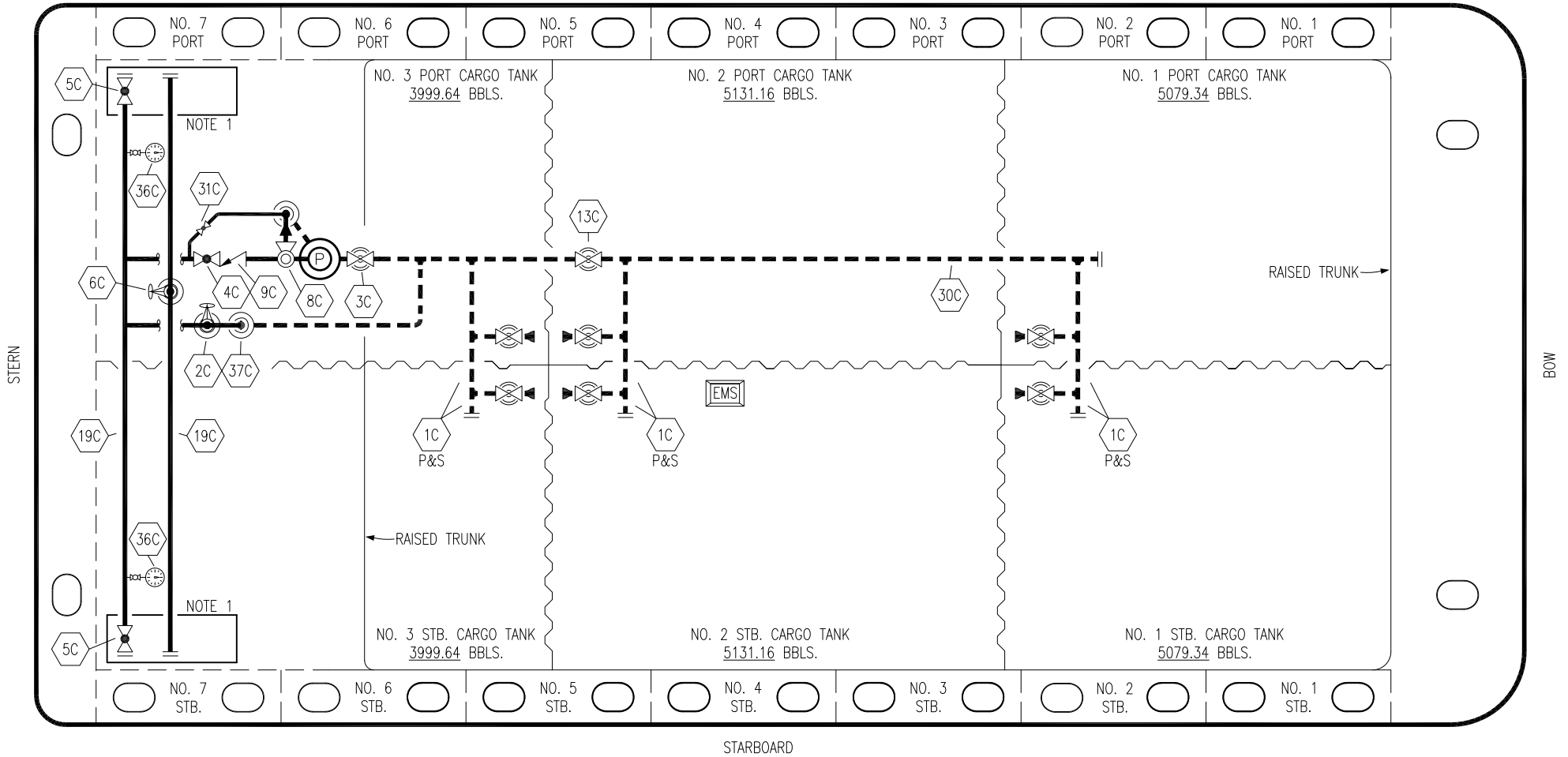


PORT



- |    |                      |     |                          |
|----|----------------------|-----|--------------------------|
| NO | DESCRIPTION          | NO  | DESCRIPTION              |
| 1C | CARGO TANK VALVE     | 13C | CARGO PIPING BLOCK VALVE |
| 2C | LOAD VALVE           | 19C | CARGO HEADER             |
| 3C | MASTER SUCTION VALVE | 30C | CARGO PIPELINE           |
| 4C | DISCHARGE VALVE      | 31C | BYPASS VALVE             |
| 5C | HEADER VALVE         | 36C | PRESSURE GAUGE           |
| 6C | SALVAGE VALVE        | 37C | CARGO DROP               |
| 8C | RELIEF VALVE         | —   | — ABOVE DECK PIPING      |
| 9C | CHECK VALVE          | --- | --- BELOW DECK PIPING    |

NOTE 1: CONTAINMENT P/S

0	06/08/22	MRV	DDA	TFB	ISSUED FOR APPROVAL
REV.	DATE	BY	CHK	APP	REVISION DESCRIPTION

KIRBY INLAND MARINE 

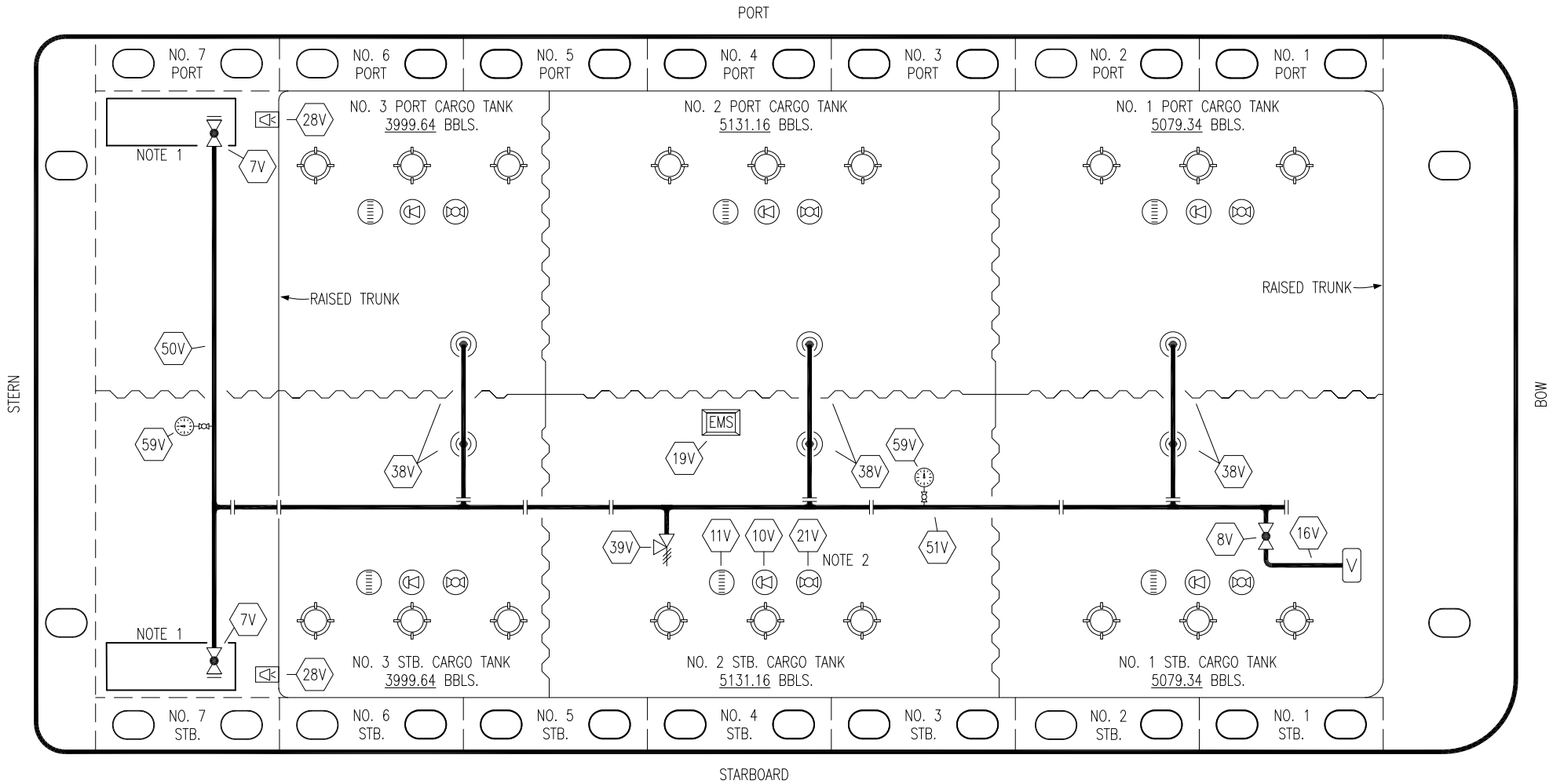
**CARGO  
PIPING FLOW DIAGRAM**

SCALE: NONE  
PAGE: 1 OF 4

**MMI 3057**

TRINITY

REV. **0**



NO	DESCRIPTION	NO	DESCRIPTION
7V	8" HEADER VALVE	28V	DOCK CONNECTION ALARM
8V	8" VENT STACK VALVE	38V	8" VAPOR PENETRATION (⊙)
10V	HIGH LEVEL/OVERFILL ALARM	39V	PRESSURE/VACUUM VALVE
11V	1-METER GAUGE STICK	50V	8" VAPOR HEADER
16V	VAPOR VENT STACK	51V	8" VAPOR PIPELINE
19V	EMERGENCY ENGINE SHUT DOWN	59V	PRESS/VAC GAUGE
21V	THERMAL PROBE	—	ABOVE DECK PIPING

NOTE 2: TYPICAL RIGGING IN EACH TANK

NOTE 1: CONTAINMENT P/S

0	06/08/22	MRV	DDA	TFB	ISSUED FOR APPROVAL
REV.	DATE	BY	CHK	APP	REVISION DESCRIPTION

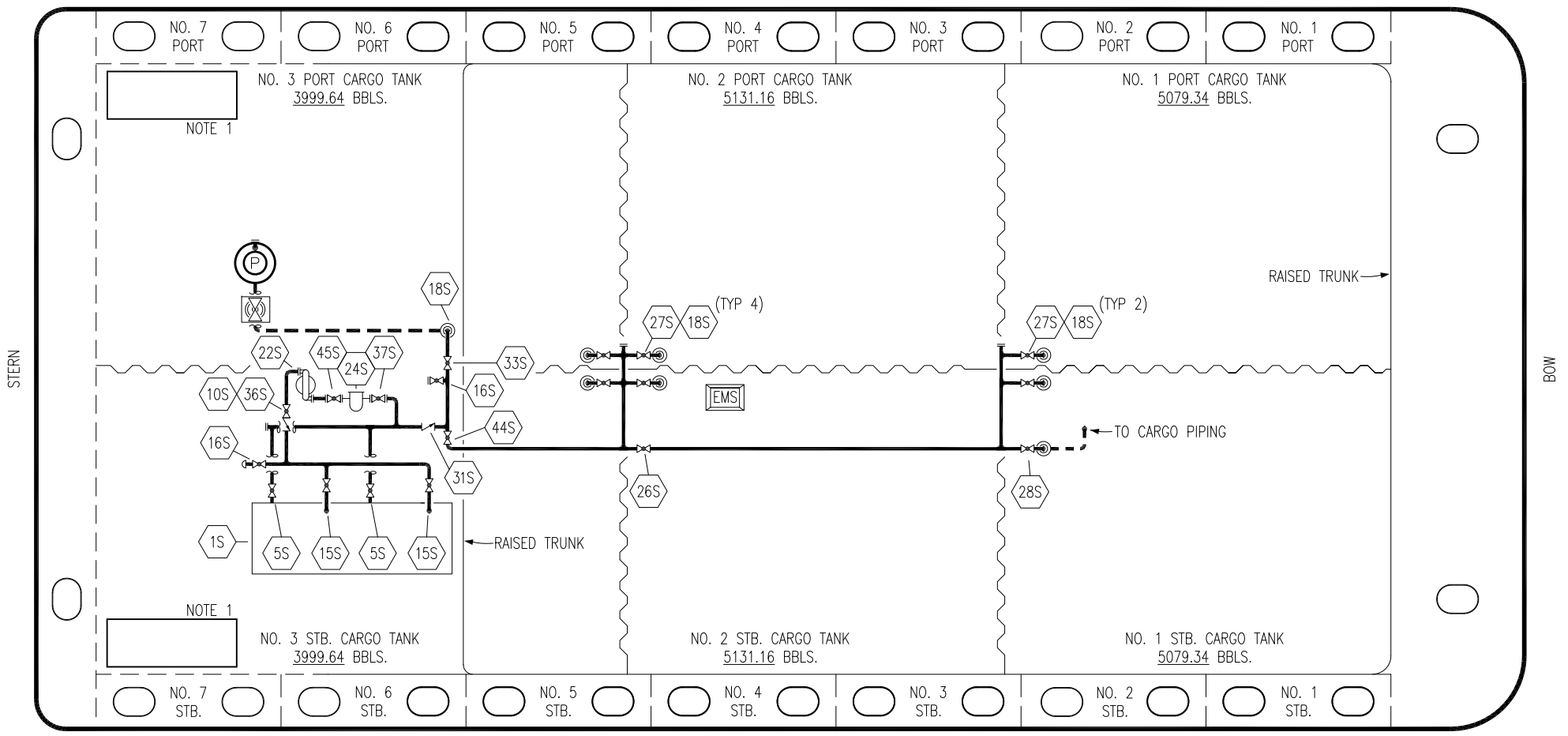
TRINITY

**KIRBY INLAND MARINE**

**VAPOR  
PIPING FLOW DIAGRAM**

SCALE: NONE	<b>MMI 3057</b>	REV. 0
PAGE: 2 OF 4		

PORT



NO	DESCRIPTION	NO	DESCRIPTION
1S	SLOP TANK	28S	CARGO PIPING SUCTION
5S	SLOP TANK SUCTION VALVE	31S	CHECK VALVE
9S	BURP VALVE	32S	PUMP WELL PRIMER VALVE
10S	STRIPPING PUMP CHECK VALVE	33S	PUMP WELL SUCTION
15S	DISCHARGE VALVE	36S	STRIPPING PUMP DISCHARGE
16S	REMOTE SUCTION CONNECTION	37S	BLOCK VALVE
18S	TYP. STRIPPING PENETRATION	44S	STRIPPING PUMP SUCTION
22S	STRIPPING PUMP	45S	STRIPPING PUMP SUCTION VALVE
24S	BASKET STRAINER	—	— ABOVE DECK PIPING
26S	STRIPPING HEADER BLOCK VALVE	---	--- BELOW DECK PIPING
27S	SUMP SUCTION VALVE		

NOTE 1: CONTAINMENT P/S

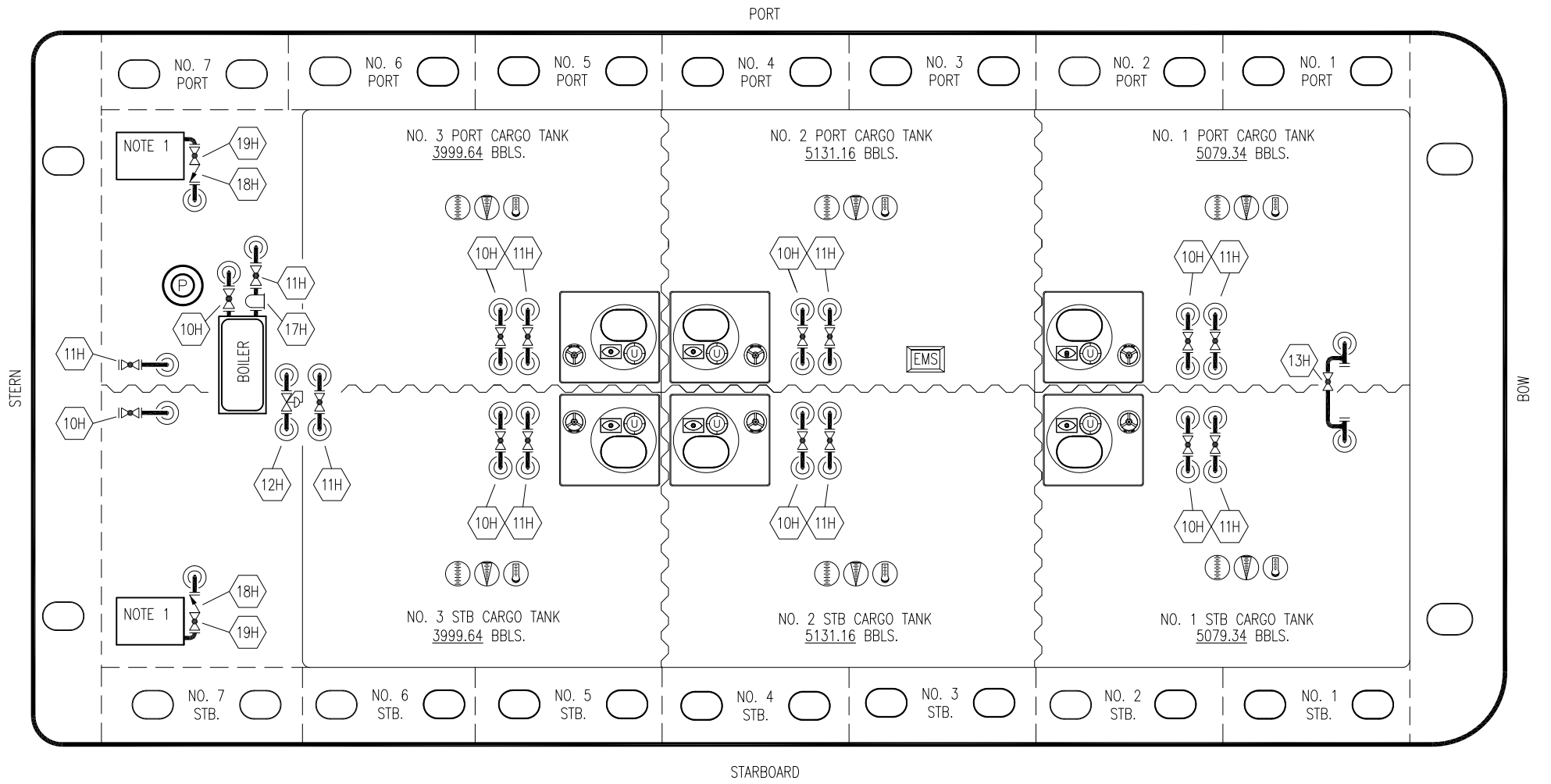
0	06/08/22	MRV	DDA	TFB	ISSUED FOR APPROVAL
REV.	DATE	BY	CHK	APP	REVISION DESCRIPTION

TRINITY

**KIRBY INLAND MARINE**

**STRIPPING  
PIPING FLOW DIAGRAM**

SCALE: NONE	<b>MMI 3057</b>	REV. 0
PAGE: 3 OF 4		




- | NO  | DESCRIPTION          |
|-----|----------------------|
| 10H | SUPPLY VALVE         |
| 11H | RETURN VALVE         |
| 12H | PRESSURE REGULATOR   |
| 13H | BY-PASS              |
| 16H | ISOLATION VALVE      |
| 17H | BASKET STRAINER      |
| 18H | CHECK VALVE          |
| 19H | DRIP PAN DRAIN VALVE |

— ABOVE DECK PIPING

NOTE 1: 6 BARREL DRIP PAN

TRINITY

						<b>KIRBY INLAND MARINE</b> 							
								<b>HOT OIL PIPING FLOW DIAGRAM</b>					
						0 06/08/22 MRV DDA TFB ISSUED FOR APPROVAL						SCALE: NONE	
						REV. DATE BY CHK APP REVISION DESCRIPTION						PAGE: 4 of 4	
						<b>MMI 3057</b>		<b>REV. 0</b>					