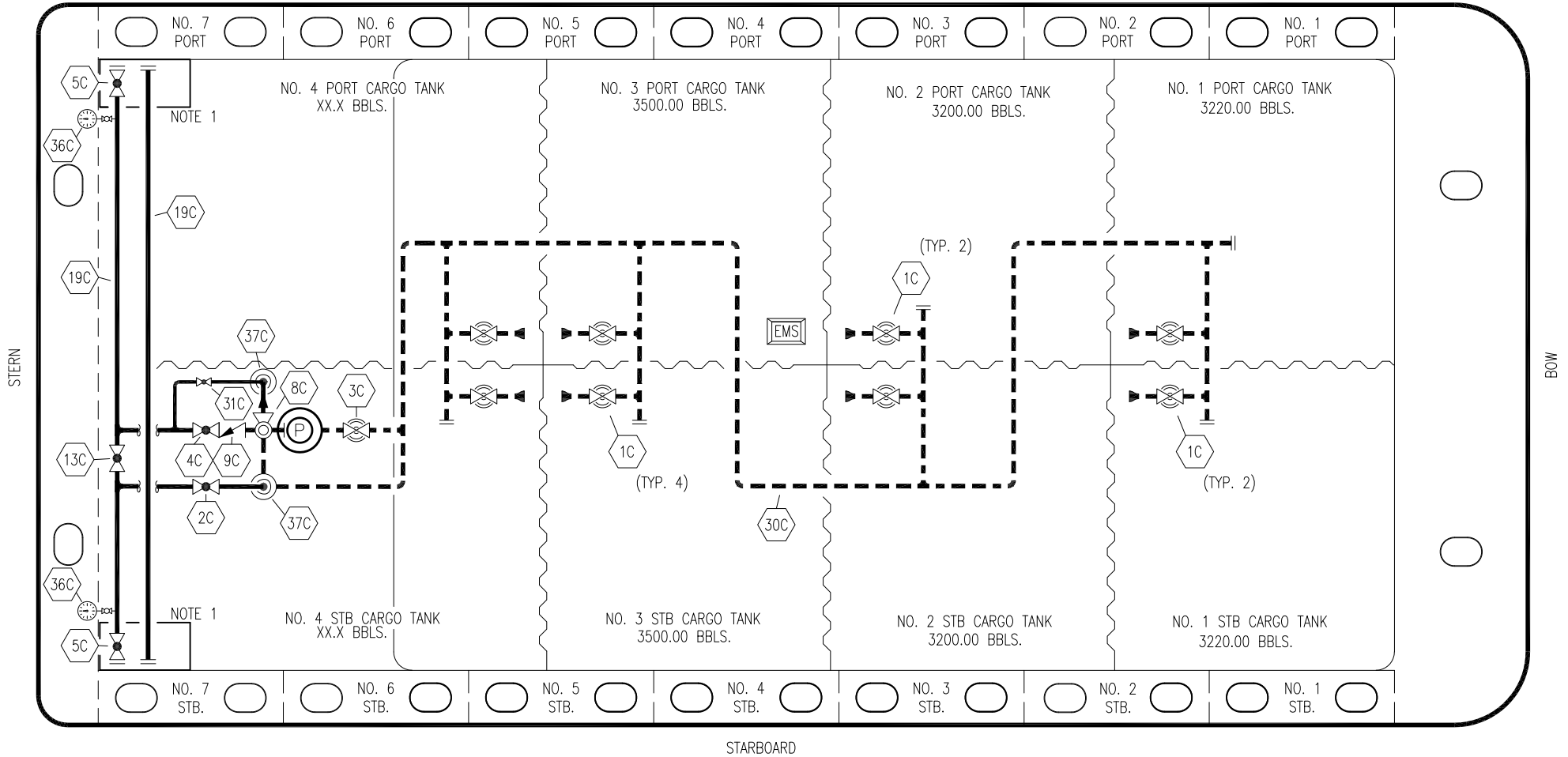



PORT



STARBOARD

NO	DESCRIPTION	NO	DESCRIPTION
1C	CARGO TANK VALVE	13C	CARGO PIPING BLOCK VALVE
2C	LOAD VALVE	19C	CARGO HEADER
3C	MASTER SUCTION VALVE	30C	CARGO PIPELINE
4C	DISCHARGE VALVE	31C	BYPASS VALVE
5C	HEADER VALVE	36C	PRESSURE GAUGE
8C	RELIEF VALVE	37C	CARGO DROP 
9C	CHECK VALVE	—	— ABOVE DECK PIPING
		- - -	BELOW DECK PIPING

NOTE 1: CONTAINMENT P/S

0	02/08/19	MRV	DDA	ISSUED FOR APPROVAL
REV.	DATE	BY	CHK	APP
				REVISION DESCRIPTION

KIRBY INLAND MARINE 

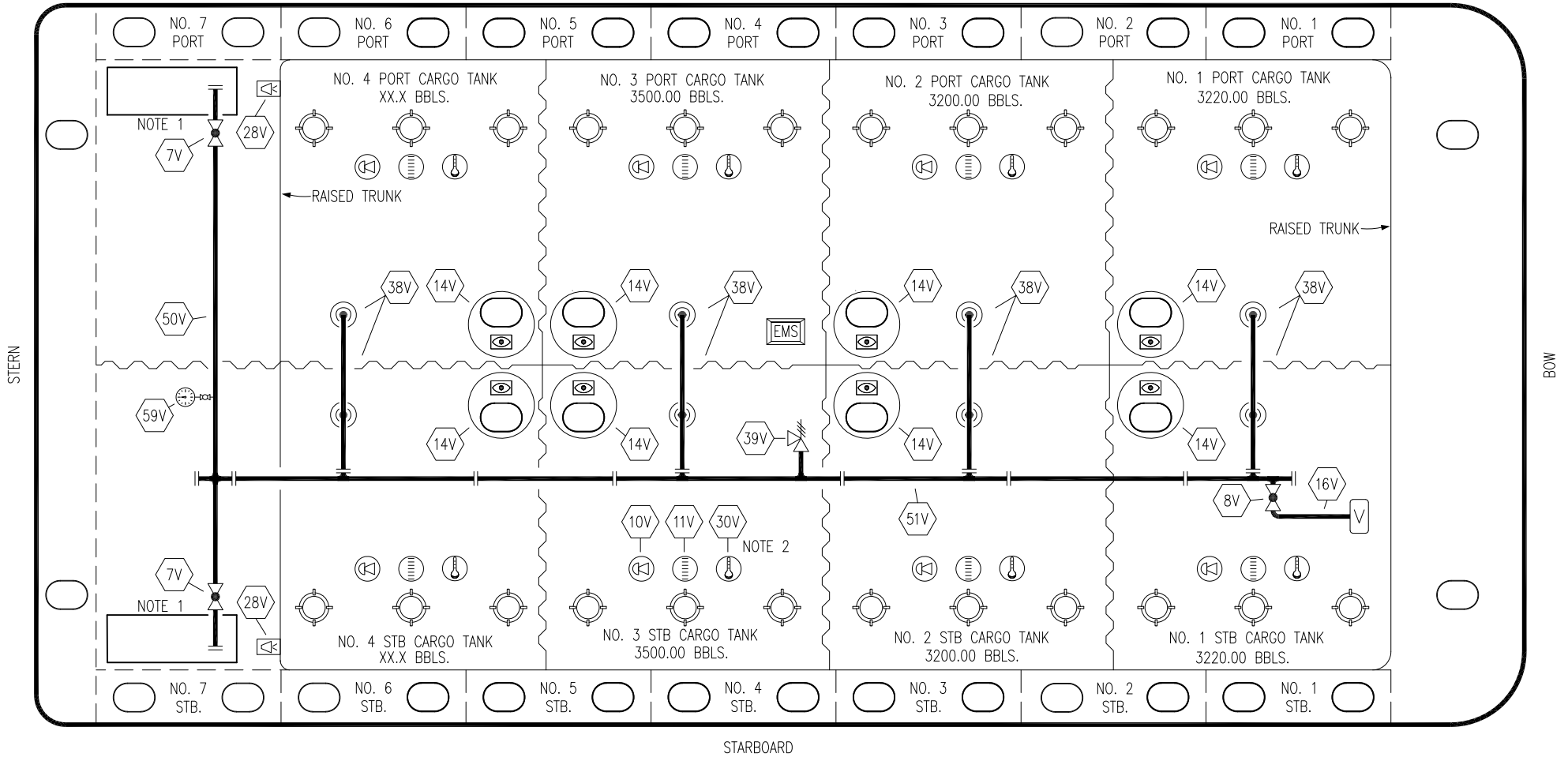
**CARGO  
PIPING FLOW DIAGRAM**

SCALE: NONE  
PAGE: 1 OF 3

**MMI 3053**

REV. **0**

PORT




STARBOARD

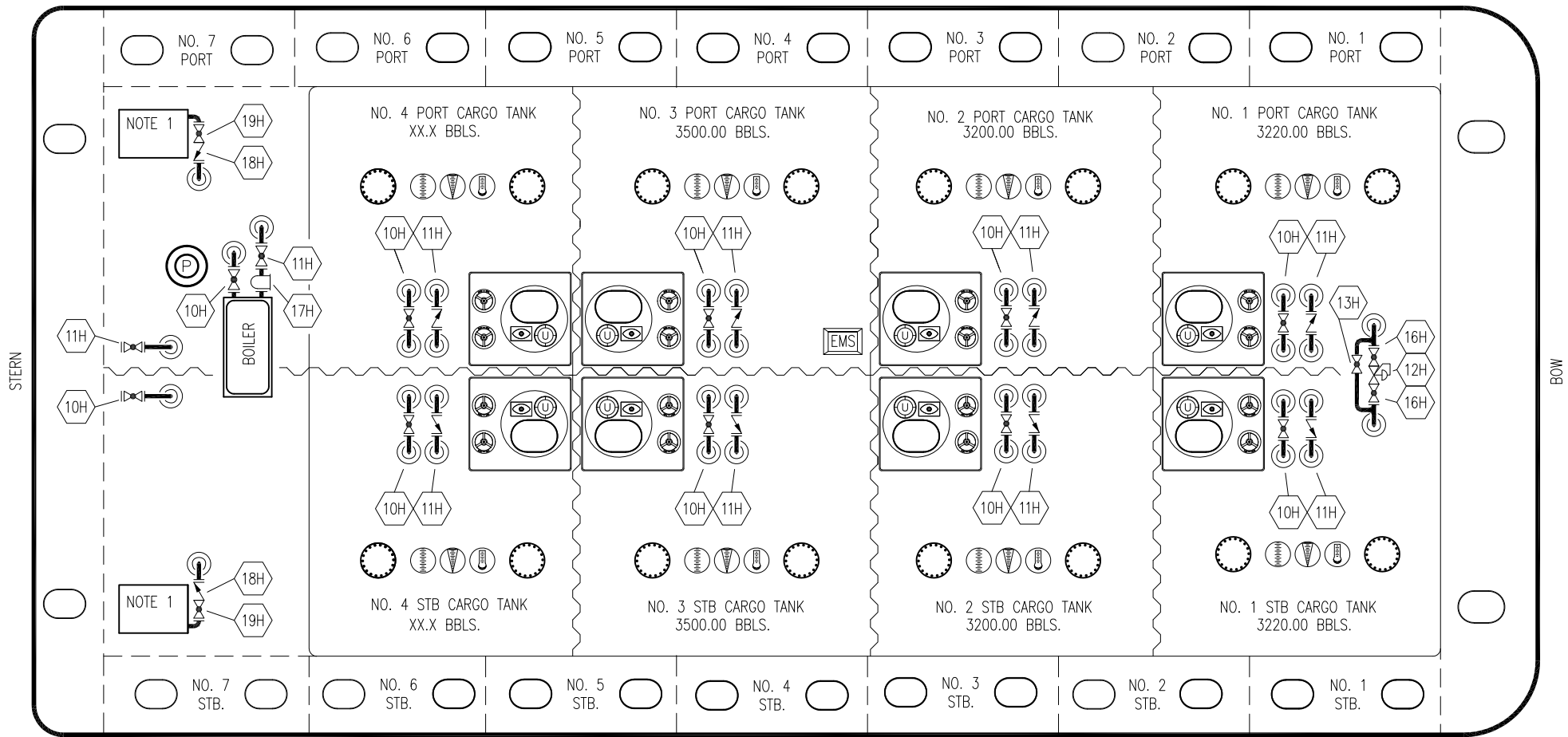
- |     |                            |
|-----|----------------------------|
| NO  | DESCRIPTION                |
| 7V  | 8" HEADER VALVE            |
| 8V  | 8" VENT STACK VALVE        |
| 10V | HIGH LEVEL/OVERFILL ALARM  |
| 11V | 1-METER GAUGE STICK        |
| 14V | SIGHT GLASS W/ GAUGE TREE  |
| 16V | VAPOR VENT STACK           |
| 19V | EMERGENCY ENGINE SHUT DOWN |
| 28V | DOCK CONNECTION ALARM      |

- |     |                          |
|-----|--------------------------|
| NO  | DESCRIPTION              |
| 30V | THERMAL WELL             |
| 38V | 8" VAPOR PENETRATION (⊙) |
| 39V | PRESSURE/VACUUM VALVE    |
| 50V | 8" VAPOR HEADER          |
| 51V | 8" VAPOR PIPELINE        |
| 59V | PRESS/VAC GAUGE          |
| —   | ABOVE DECK PIPING        |

NOTE 2: TYPICAL RIGGING IN EACH TANK  
 NOTE 1: CONTAINMENT P/S

0	02/08/19	MRV	DDA	ISSUED FOR APPROVAL
REV.	DATE	BY	CHK	APP
				REVISION DESCRIPTION

 <b>KIRBY INLAND MARINE</b>	
<b>VAPOR PIPING FLOW DIAGRAM</b>	
SCALE: NONE	<b>MMI 3053</b>
PAGE: 2 OF 3	<b>REV. 0</b>




STERN

BOW

- | NO                  | DESCRIPTION          |
|---------------------|----------------------|
| 10H                 | SUPPLY VALVE         |
| 11H                 | RETURN               |
| 12H                 | PRESSURE REGULATOR   |
| 13H                 | BY-PASS              |
| 16H                 | ISOLATION VALVE      |
| 17H                 | BASKET STRAINER      |
| 18H                 | CHECK VALVE          |
| 19H                 | DRIP PAN DRAIN VALVE |
| — ABOVE DECK PIPING |                      |

NOTE 1: 6 BARREL DRIP PAN

0	02/08/19	MRV	DDA	ISSUED FOR APPROVAL	
REV.	DATE	BY	CHK	APP	REVISION DESCRIPTION

 <b>KIRBY INLAND MARINE</b>	
<b>HOT OIL</b> <b>PIPING FLOW DIAGRAM</b>	
<b>MMI 3053</b>	<b>REV. 0</b>
SCALE: NONE PAGE: 3 of 3	