

- | | | | |
|----|----------------------|-------|--------------------------|
| NO | DESCRIPTION | NO | DESCRIPTION |
| 1C | CARGO TANK VALVE | 13C | CARGO PIPING BLOCK VALVE |
| 2C | LOAD VALVE | 19C | CARGO HEADER |
| 3C | MASTER SUCTION VALVE | 30C | CARGO PIPELINE |
| 4C | DISCHARGE VALVE | 31C | BYPASS VALVE |
| 5C | HEADER VALVE | 36C | PRESSURE GAUGE |
| 6C | SALVAGE VALVE | 37C | CARGO DROP |
| 8C | RELIEF VALVE | — | ABOVE DECK PIPING |
| 9C | CHECK VALVE | - - - | BELOW DECK PIPING |

NOTE 1: CONTAINMENT P/S

0	12/13/23	MRV	DDA	LAR	ISSUED FOR APPROVAL
REV.	DATE	BY	CHK	APP	REVISION DESCRIPTION

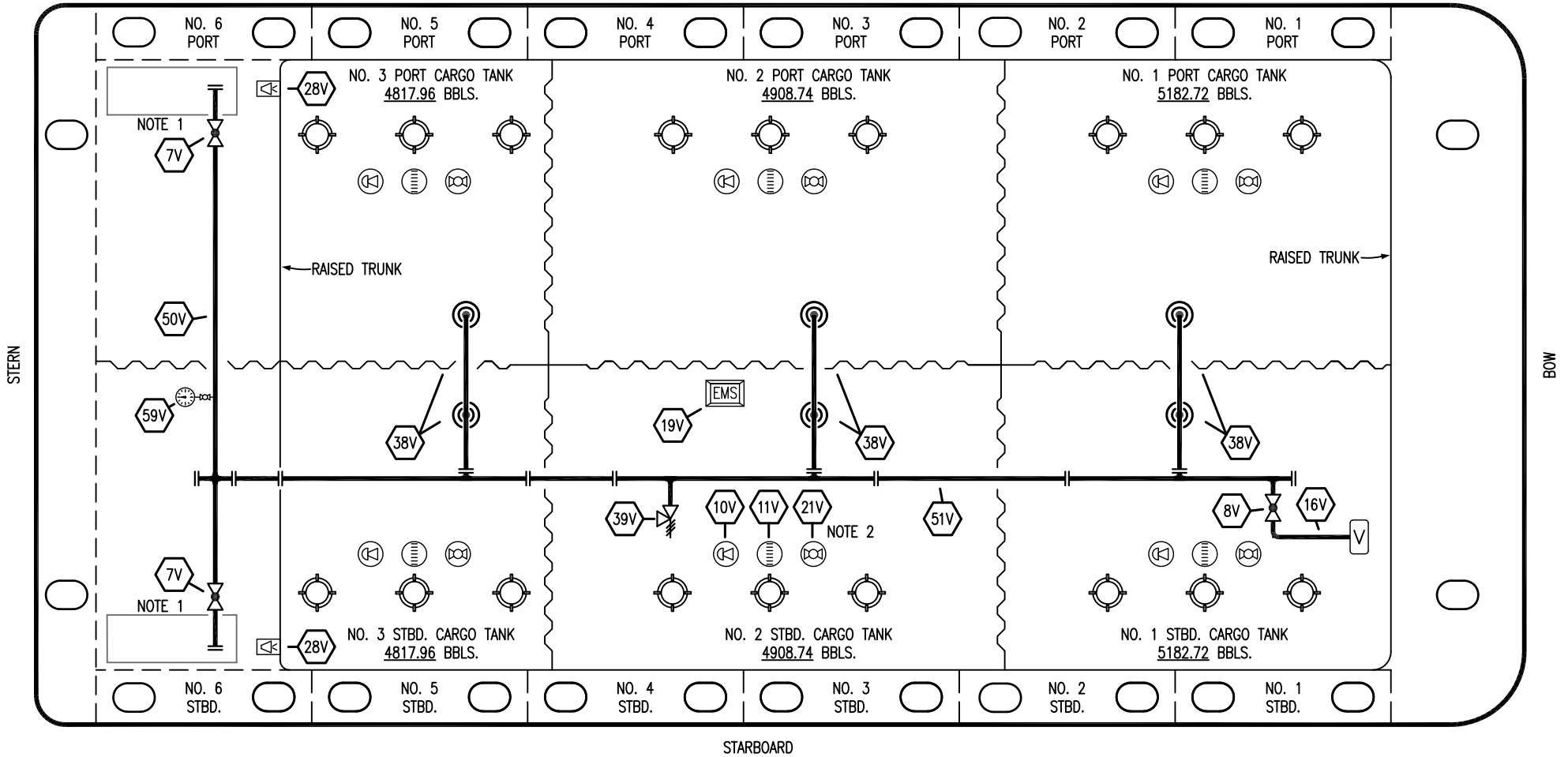
TRINITY

KIRBY INLAND MARINE

**CARGO
PIPING FLOW DIAGRAM**

SCALE: NONE	MMI 3032	REV. 0
PAGE: 1 OF 4		

PORT



STARBOARD

- | | | | |
|-----|----------------------------|-----|-----------------------|
| NO | DESCRIPTION | NO | DESCRIPTION |
| 7V | HEADER VALVE | 28V | DOCK CONNECTION ALARM |
| 8V | VENT STACK VALVE | 38V | VAPOR PENETRATION |
| 10V | HIGH LEVEL/OVERFILL ALARM | 39V | PRESSURE/VACUUM VALVE |
| 11V | 1-METER GAUGE STICK | 50V | VAPOR HEADER |
| 16V | VAPOR VENT STACK | 51V | VAPOR PIPELINE |
| 19V | EMERGENCY ENGINE SHUT DOWN | 59V | PRESS/VAC GAUGE |
| 21V | HERMETIC GAUGE | — | ABOVE DECK PIPING |

NOTE 2: TYPICAL RIGGING IN EACH TANK
 NOTE 1: CONTAINMENT P/S

0	12/13/23	MRV	DDA	LAR	ISSUED FOR APPROVAL
REV.	DATE	BY	CHK	APP	REVISION DESCRIPTION

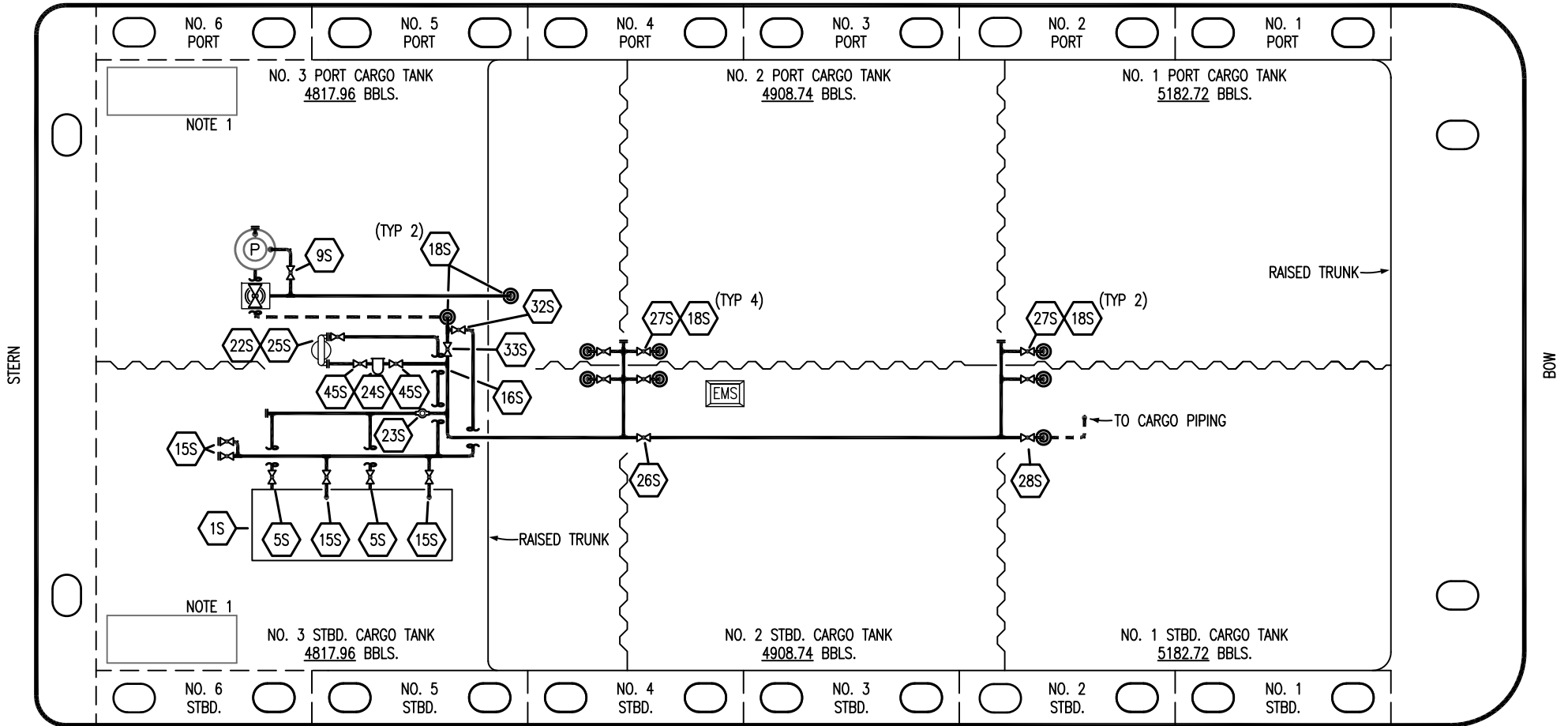
TRINITY

KIRBY INLAND MARINE

**VAPOR
PIPING FLOW DIAGRAM**

SCALE: NONE	MMI 3032	REV. 0
PAGE: 2 OF 4		

PORT



NO	DESCRIPTION
1S	SLOP TANK
5S	SLOP TANK SUCTION VALVE
9S	BURP VALVE
15S	DISCHARGE VALVE
16S	REMOTE SUCTION CONNECTION
18S	TYP. STRIPPING PENETRATION
22S	STRIPPING PUMP
23S	FLOW INDICATOR
25S	STRIPPING PUMP DISCHARGE VALVE

NO	DESCRIPTION
26S	STRIPPING HEADER BLOCK VALVE
27S	SUMP SUCTION VALVE
28S	CARGO PIPING SUCTION
32S	PUMP WELL PRIMER VALVE
33S	PUMP WELL SUCTION
36S	STRIPPING PUMP DISCHARGE
45S	STRIPPING PUMP SUCTION
—	ABOVE DECK PIPING
- - -	BELOW DECK PIPING

NOTE 1: CONTAINMENT P/S

REV.	DATE	BY	CHK	APP	REVISION DESCRIPTION
0	12/13/23	MRV	DDA	LAR	ISSUED FOR APPROVAL

KIRBY INLAND MARINE 

**STRIPPING
PIPING FLOW DIAGRAM**

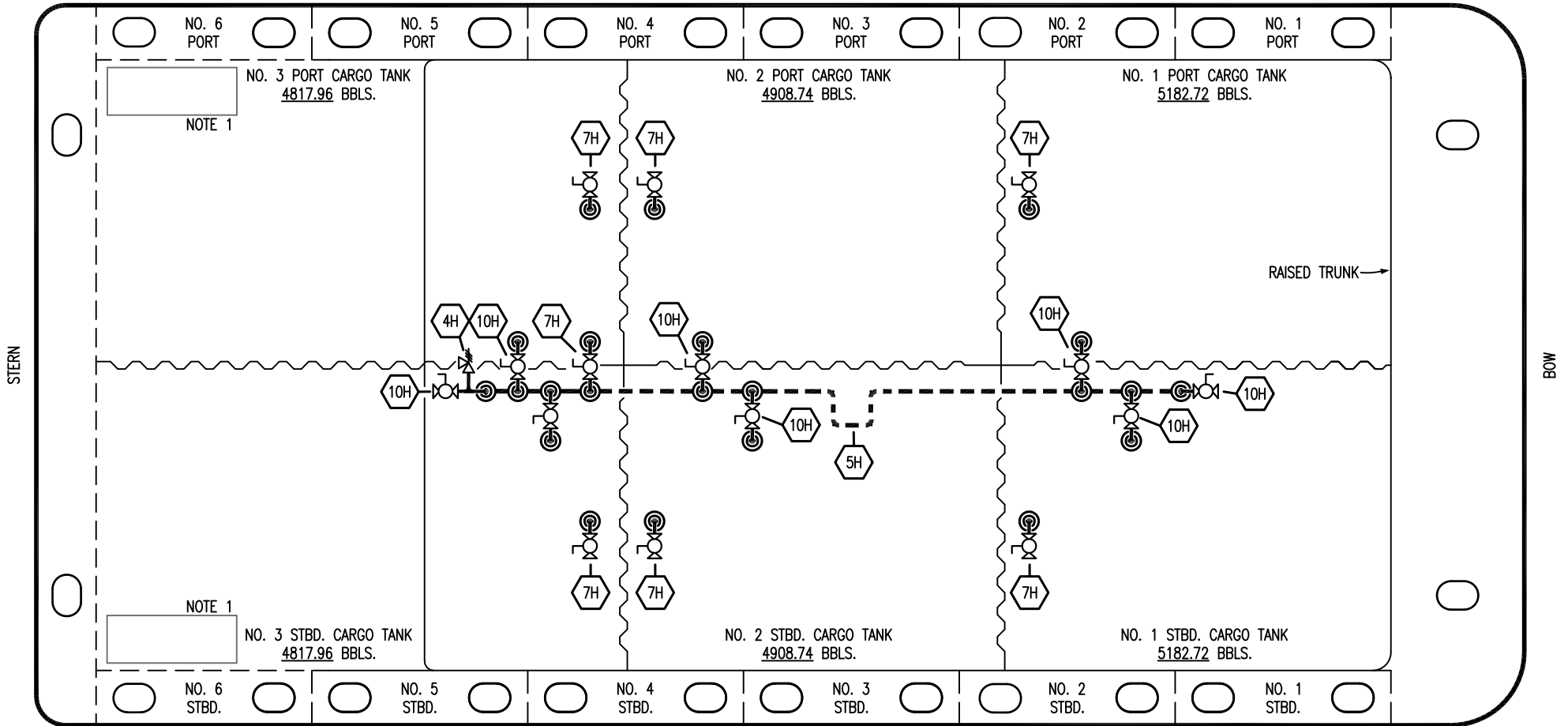
SCALE: NONE
PAGE: 3 OF 4

MMI 3032

TRINITY

REV. **0**


PORT



STERN


BOW

STARBOARD

- | NO | DESCRIPTION |
|-----|--|
| 4H | RELIEF VALVE |
| 5H | STEAM HEADER |
| 7H | CONDENSATE OUTLET |
| 9H | STEAM DROP  |
| 10H | SUPPLY VALVE |

NOTE 1: CONTAINMENT P/S

REV.	DATE	BY	CHK	APP	REVISION DESCRIPTION
0	12/13/23	MRV	DDA	LAR	ISSUED FOR APPROVAL

	
KIRBY INLAND MARINE	
STEAM	
PIPING FLOW DIAGRAM	
SCALE: NONE	MMI 3032
PAGE: 4 OF 4	REV. 0

TRINITY