

<b>NO</b>	<b>DESCRIPTION</b>	<b>NO</b>	<b>DESCRIPTION</b>
1C	CARGO TANK VALVE	19C	CARGO HEADER
2C	LOAD VALVE	30C	CARGO PIPELINE
3C	MASTER SUCTION VALVE	31C	BYPASS VALVE
4C	DISCHARGE VALVE	36C	PRESSURE GAUGE
5C	HEADER VALVE	37C	CARGO DROP
6C	SALVAGE VALVE	—	— ABOVE DECK PIPING
8C	RELIEF VALVE	---	--- BELOW DECK PIPING
9C	CHECK VALVE		

NOTE 1: CONTAINMENT P/S

0	08/27/18	WFB	DDA	ISSUED FOR APPROVAL
REV.	DATE	BY	CHK	APP
				REVISION DESCRIPTION

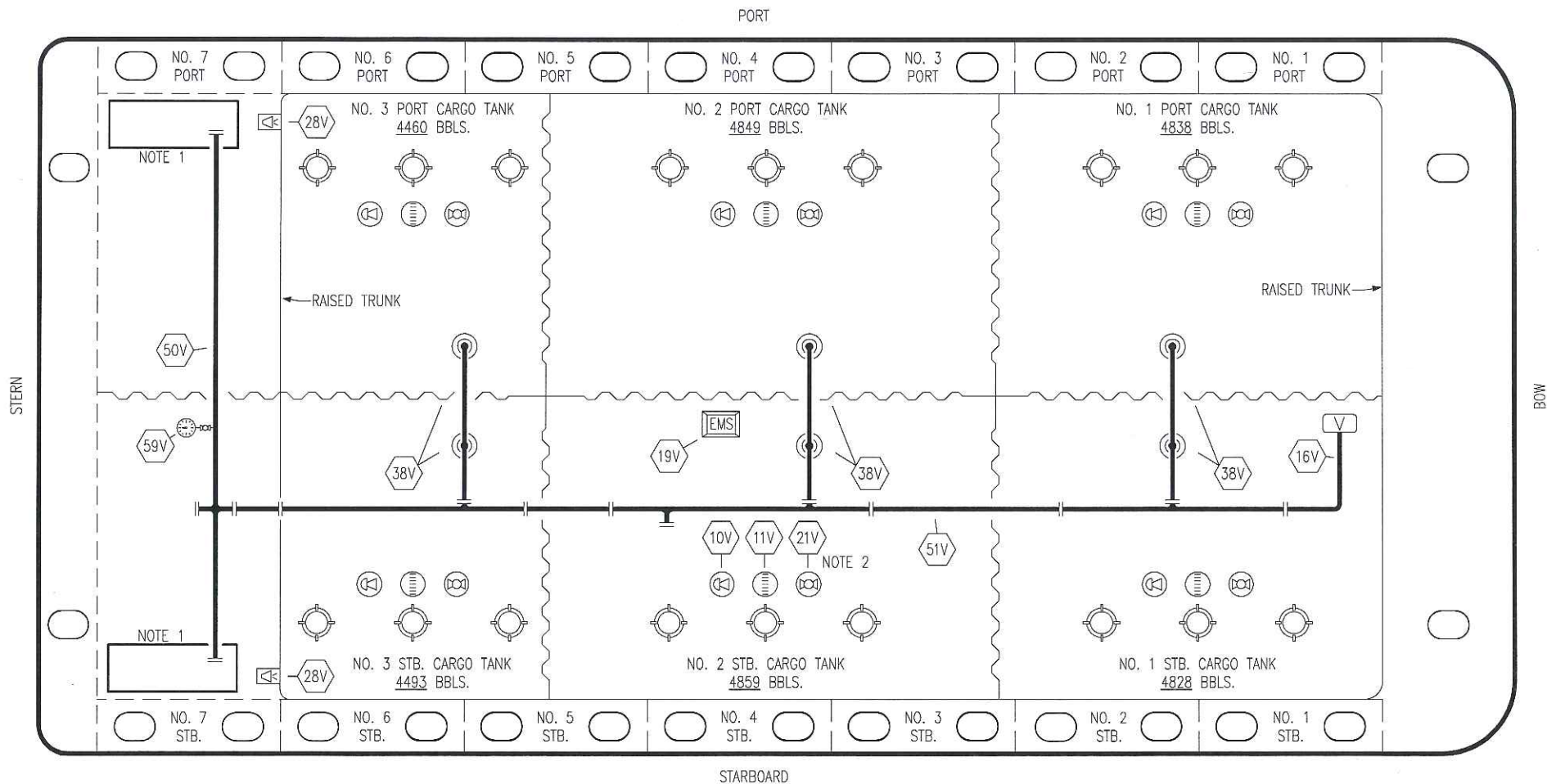
TRINITY

**KIRBY INLAND MARINE**

**CARGO**

**PIPING FLOW DIAGRAM**

SCALE: NONE	<b>MMI 3024</b>	REV. <b>0</b>
PAGE: 1 OF 3		



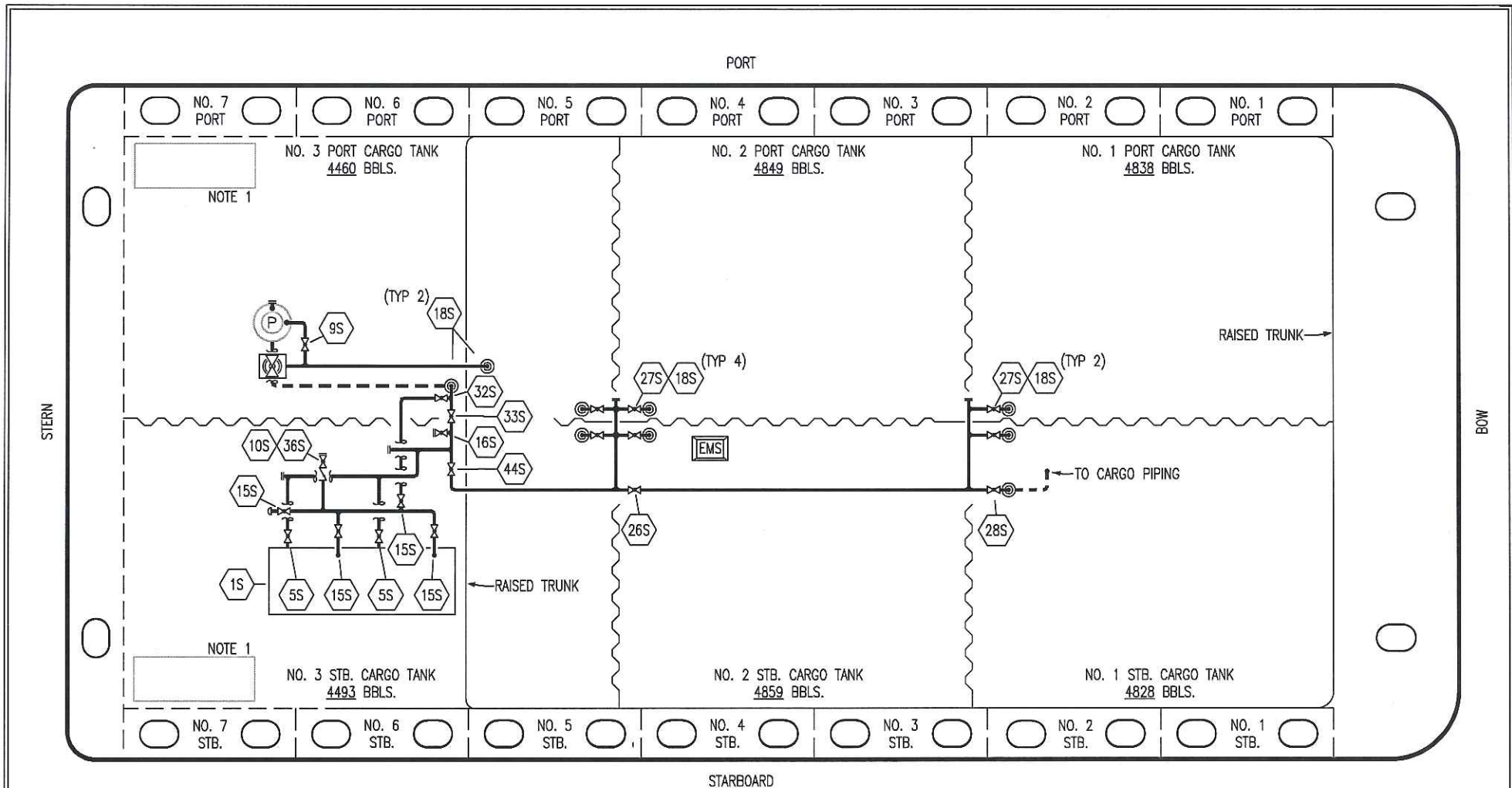
- |     |                            |     |                       |
|-----|----------------------------|-----|-----------------------|
| NO  | DESCRIPTION                | NO  | DESCRIPTION           |
| 10V | HIGH LEVEL/OVERFILL ALARM  | 28V | DOCK CONNECTION ALARM |
| 11V | 1-METER GAUGE STICK        | 38V | 8" VAPOR PENETRATION  |
| 16V | VAPOR VENT STACK           | 50V | 8" VAPOR HEADER       |
| 19V | EMERGENCY ENGINE SHUT DOWN | 51V | 8" VAPOR PIPELINE     |
| 21V | 2" HERMETIC GAUGE          | —   | ABOVE DECK PIPING     |

NOTE 2: TYPICAL RIGGING IN EACH TANK

NOTE 1: CONTAINMENT P/S

TRINITY

					KIRBY INLAND MARINE	
					<b>VAPOR PIPING FLOW DIAGRAM</b>	
0	08/27/18	WFB	DDA	ISSUED FOR APPROVAL	SCALE: NONE	<b>MMI 3024</b>
REV.	DATE	BY	CHK	APP	REVISION DESCRIPTION	
					REV. <b>0</b>	



NO	DESCRIPTION	NO	DESCRIPTION
1S	SLOP TANK	26S	STRIPPING HEADER BLOCK VALVE
5S	SLOP TANK SUCTION VALVE	27S	SUMP SUCTION VALVE
9S	BURP VALVE	28S	CARGO PIPING SUCTION
10S	STRIPPING PUMP CHECK VALVE	32S	PUMP WELL PRIMER VALVE
15S	DISCHARGE VALVE	33S	PUMP WELL SUCTION
16S	REMOTE SUCTION CONNECTION	36S	STRIPPING PUMP DISCHARGE
18S	TYP. STRIPPING PENETRATION	44S	STRIPPING PUMP SUCTION
		—	ABOVE DECK PIPING
		- - -	BELOW DECK PIPING

NOTE 1: CONTAINMENT P/S

0	08/27/18	WFB	DDA	ISSUED FOR APPROVAL
REV.	DATE	BY	CHK	APP
				REVISION DESCRIPTION

TRINITY

**KIRBY INLAND MARINE**

**STRIPPING  
PIPING FLOW DIAGRAM**

SCALE: NONE	<b>MMI 3024</b>	REV. 0
PAGE: 3 OF 3		