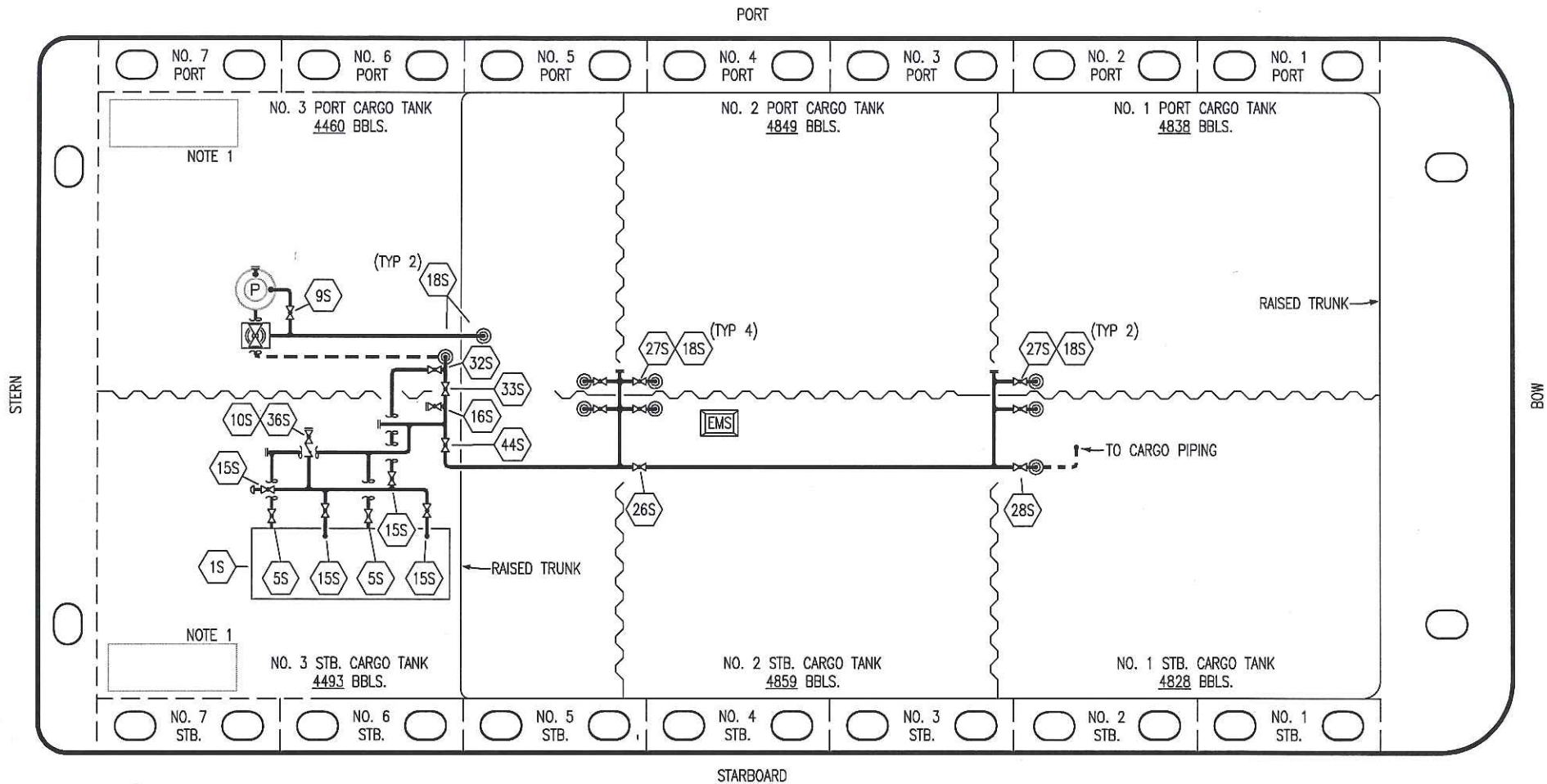


- | | | | |
|-----|----------------------------|-----|--------------------------|
| NO | DESCRIPTION | NO | DESCRIPTION |
| 10V | HIGH LEVEL/OVERFILL ALARM | 28V | DOCK CONNECTION ALARM |
| 11V | 1-METER GAUGE STICK | 38V | 8" VAPOR PENETRATION (⊙) |
| 16V | VAPOR VENT STACK | 50V | 8" VAPOR HEADER |
| 19V | EMERGENCY ENGINE SHUT DOWN | 51V | 8" VAPOR PIPELINE |
| 21V | 2" HERMETIC GAUGE | — | ABOVE DECK PIPING |

NOTE 2: TYPICAL RIGGING IN EACH TANK
 NOTE 1: CONTAINMENT P/S

TRINITY

<h2 style="margin: 0;">KIRBY INLAND MARINE</h2>				
<h3 style="margin: 0;">VAPOR PIPING FLOW DIAGRAM</h3>				
0	08/27/18	WFB	DDA	ISSUED FOR APPROVAL
REV.	DATE	BY	CHK	APP
				REVISION DESCRIPTION
			SCALE: NONE	PAGE: 2 OF 3
<h1 style="margin: 0;">MMI 3022</h1>				REV. 0



NO	DESCRIPTION	NO	DESCRIPTION
1S	SLOP TANK	26S	STRIPPING HEADER BLOCK VALVE
5S	SLOP TANK SUCTION VALVE	27S	SUMP SUCTION VALVE
9S	BURP VALVE	28S	CARGO PIPING SUCTION
10S	STRIPPING PUMP CHECK VALVE	32S	PUMP WELL PRIMER VALVE
15S	DISCHARGE VALVE	33S	PUMP WELL SUCTION
16S	REMOTE SUCTION CONNECTION	36S	STRIPPING PUMP DISCHARGE
18S	TYP. STRIPPING PENETRATION	44S	STRIPPING PUMP SUCTION
		—	ABOVE DECK PIPING
		- - -	BELOW DECK PIPING

NOTE 1: CONTAINMENT P/S

REV.	DATE	BY	CHK	APP	REVISION DESCRIPTION
0	08/27/18	WFB	DDA		ISSUED FOR APPROVAL

KIRBY INLAND MARINE 

**STRIPPING
PIPING FLOW DIAGRAM**

SCALE: NONE
PAGE: 3 OF 3

MMI 3022

REV. **0**

TRINITY