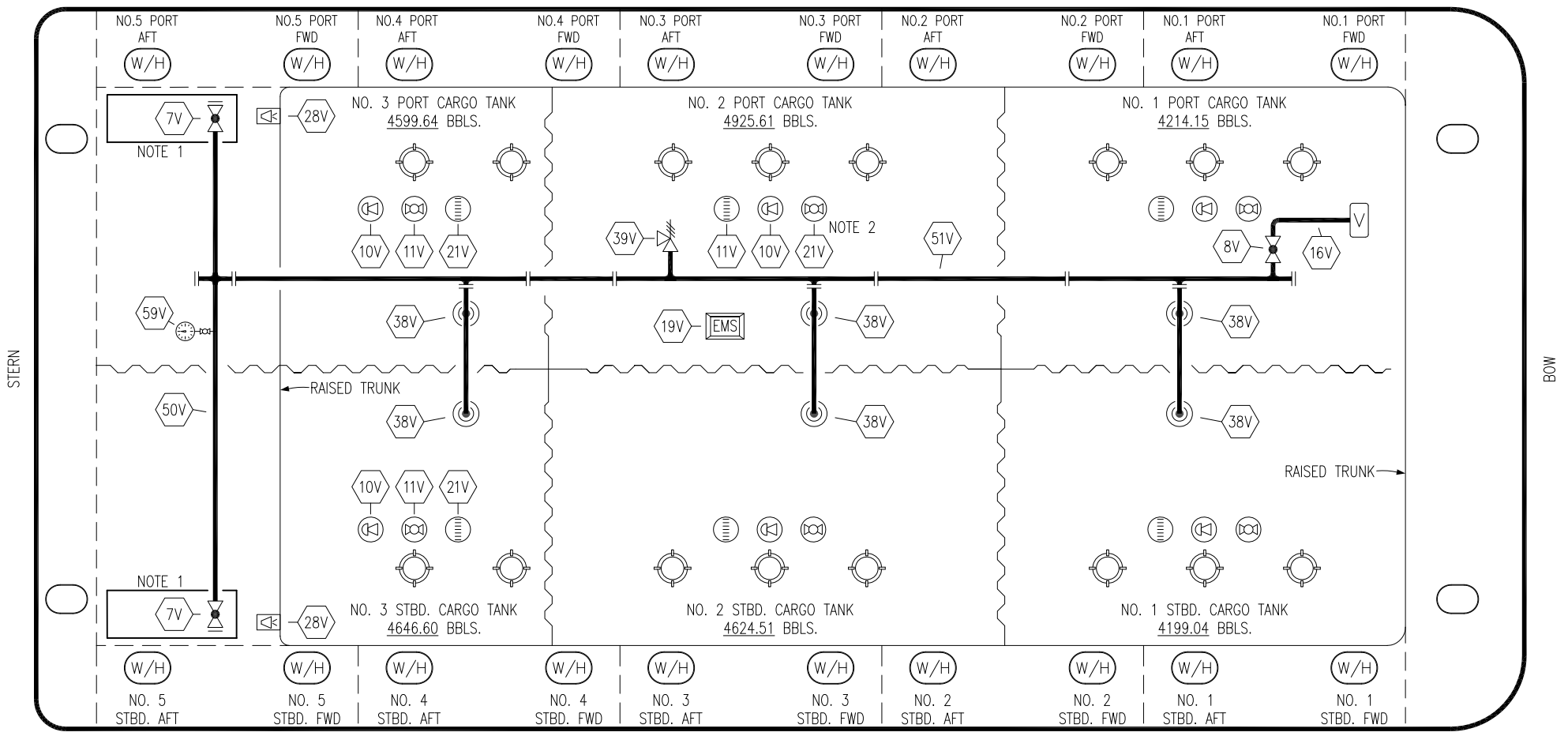


PORT



STERN

BOW

STARBOARD

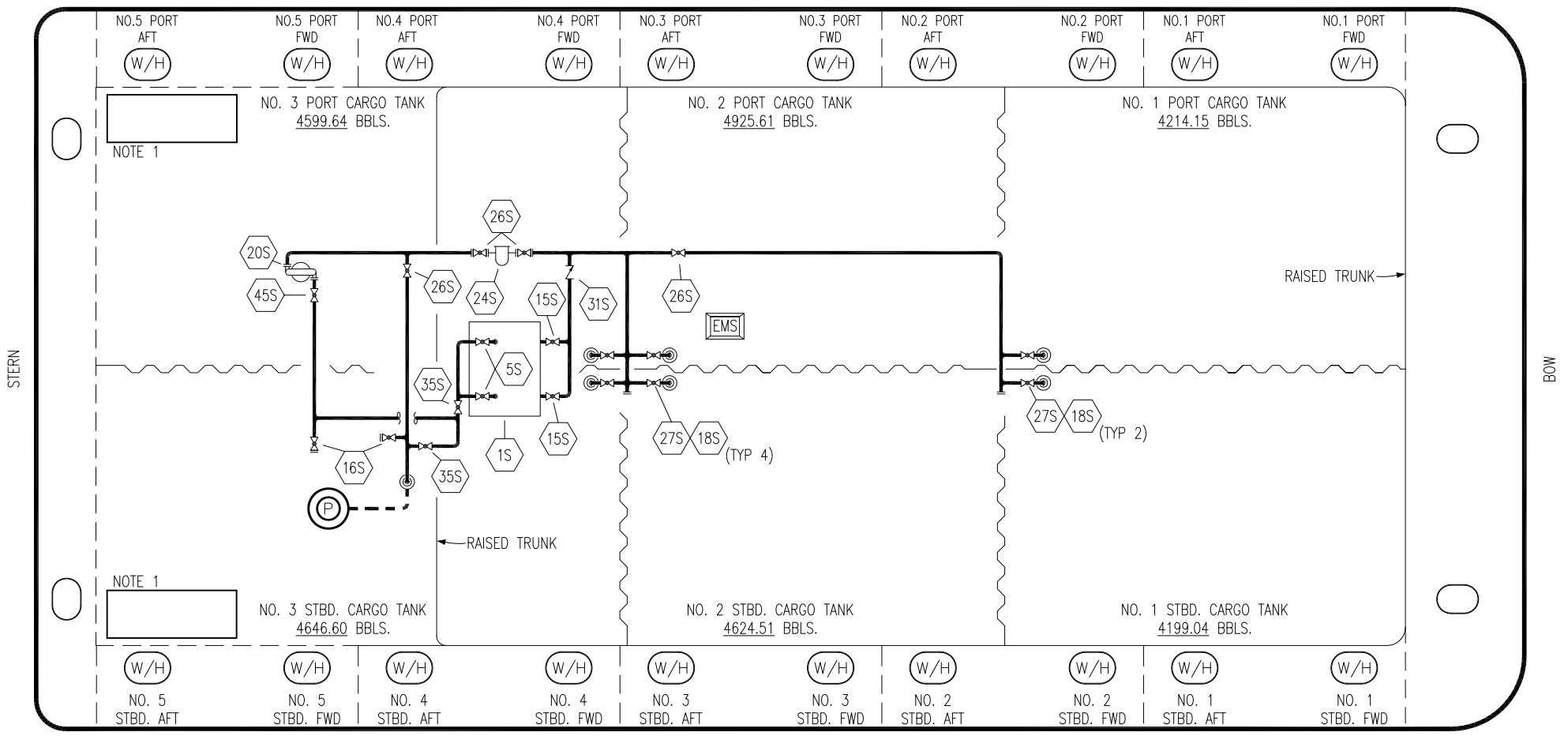
- | | | | |
|-----|----------------------------|-----|--------------------------|
| NO | DESCRIPTION | NO | DESCRIPTION |
| 7V | 8" HEADER VALVE | 28V | DOCK CONNECTION ALARM |
| 8V | 8" VENT STACK VALVE | 38V | 8" VAPOR PENETRATION (⊙) |
| 10V | HIGH LEVEL/OVERFILL ALARM | 39V | PRESSURE/VACUUM VALVE |
| 11V | 1-METER GAUGE STICK | 50V | 8" VAPOR HEADER |
| 16V | VAPOR VENT STACK | 51V | 8" VAPOR PIPELINE |
| 19V | EMERGENCY ENGINE SHUT DOWN | 59V | PRESS/VAC GAUGE |
| 21V | 2" HERMETIC GAUGE | — | ABOVE DECK PIPING |

NOTE 2: TYPICAL RIGGING IN EACH TANK
NOTE 1: CONTAINMENT P/S

TRINITY

KIRBY INLAND MARINE					
VAPOR PIPING FLOW DIAGRAM					
0	09/21/20	MRV	DDA	CW	ISSUED FOR APPROVAL
REV.	DATE	BY	CHK	APP	REVISION DESCRIPTION
					SCALE: NONE
					PAGE: 2 OF 3
MMI 2806					REV. 0

PORT



STERN

BOW

STARBOARD

NO	DESCRIPTION	NO	DESCRIPTION
1S	SLOP TANK	31S	CHECK VALVE
5S	SLOP TANK SUCTION VALVE	35S	STRIPPING VALVE
10S	STRIPPING PUMP CHECK VALVE	36S	STRIPPING PUMP DISCHARGE
15S	DISCHARGE VALVE	45S	STRIPPING PUMP SUCTION
16S	REMOTE SUCTION CONNECTION	—	— ABOVE DECK PIPING
18S	TYP. STRIPPING PENETRATION	---	--- BELOW DECK PIPING
20S	PNEUMATIC AIR PUMP		
24S	BASKET STRAINER		
26S	STRIPPING HEADER BLOCK VALVE		
27S	SUMP SUCTION VALVE		

NOTE 1: CONTAINMENT P/S

0	09/21/20	MRV	DDA	CW	ISSUED FOR APPROVAL
REV.	DATE	BY	CHK	APP	REVISION DESCRIPTION

TRINITY

KIRBY INLAND MARINE

**STRIPPING
PIPING FLOW DIAGRAM**

SCALE: NONE	MMI 2806
PAGE: 3 OF 3	REV. 0