

NO	DESCRIPTION	NO	DESCRIPTION
1C	CARGO TANK VALVE	19C	CARGO HEADER
2C	LOAD VALVE	30C	CARGO PIPELINE
3C	MASTER SUCTION VALVE	31C	BYPASS VALVE
4C	DISCHARGE VALVE	36C	PRESSURE GAUGE
5C	HEADER VALVE	37C	CARGO DROP
8C	RELIEF VALVE		ABOVE DECK PIPING
9C	CHECK VALVE		BELOW DECK PIPING
10C	BURP VALVE		
11C	BLEED OFF VALVE		
13C	CARGO PIPING BLOCK VALVE		

NOTE 1: CONTAINMENT- PORT & STBD.

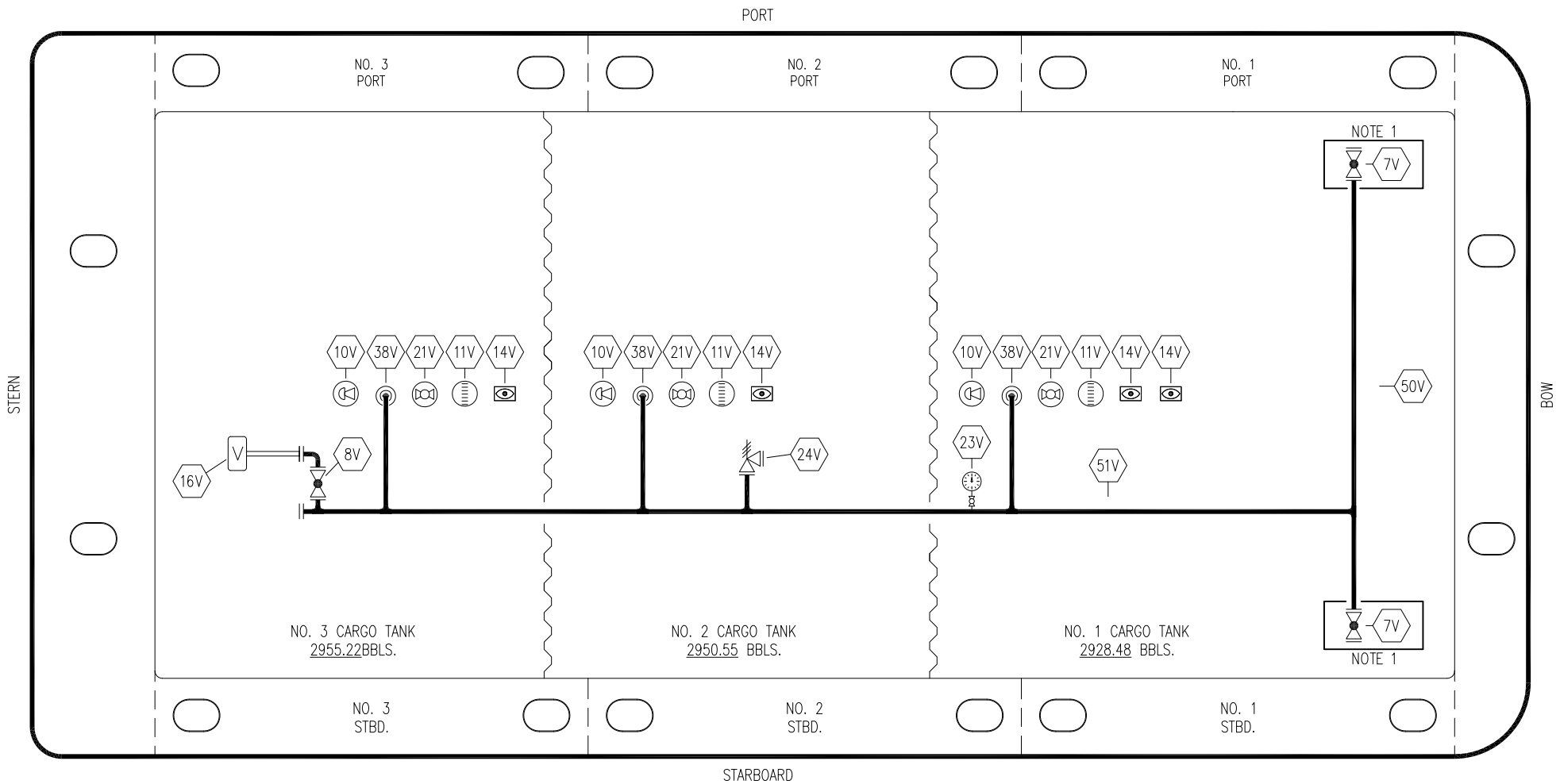
REV.	DATE	BY	CHK	APP	REVISION DESCRIPTION
0	08/20/20	MRV	DDA	CW	REVISED PER CLIENT COMMENTS
A	07/22/11	DCB	DDA		ISSUED FOR APPROVAL

**KIRBY INLAND MARINE**

**CARGO PIPING FLOW DIAGRAM**

**MER-9**

SCALE: NONE	<b>REV. 0</b>
PAGE: 1 OF 2	



- |     |                           |     |                   |
|-----|---------------------------|-----|-------------------|
| NO  | DESCRIPTION               | NO  | DESCRIPTION       |
| 7V  | HEADER VALVE              | 50V | VAPOR HEADER      |
| 8V  | VENT STACK VALVE          | 51V | VAPOR PIPELINE    |
| 10V | HIGH LEVEL/OVERFILL ALARM | —   | ABOVE DECK PIPING |
| 11V | 1 METER GAUGE STICK       |     |                   |
| 14V | SIGHT GLASS               |     |                   |
| 16V | VAPOR VENT STACK          |     |                   |
| 21V | HERMETIC GAUGE            |     |                   |
| 23V | PRESSURE GAUGE            |     |                   |
| 24V | PRESSURE RELIEF VALVE     |     |                   |
| 38V | VAPOR DROP OR PENETRATION | ⊙   |                   |

NOTE 1: CONTAINMENT

0	08/20/20	MRV	DDA	CW	REVISED PER CLIENT COMMENTS
A	07/22/11	DCB	DDA		ISSUED FOR APPROVAL
REV.	DATE	BY	CHK	APP	REVISION DESCRIPTION

**KIRBY INLAND MARINE**

VAPOR  
PIPING FLOW DIAGRAM

SCALE: NONE	MER-9
PAGE: 2 OF 2	REV. <b>0</b>