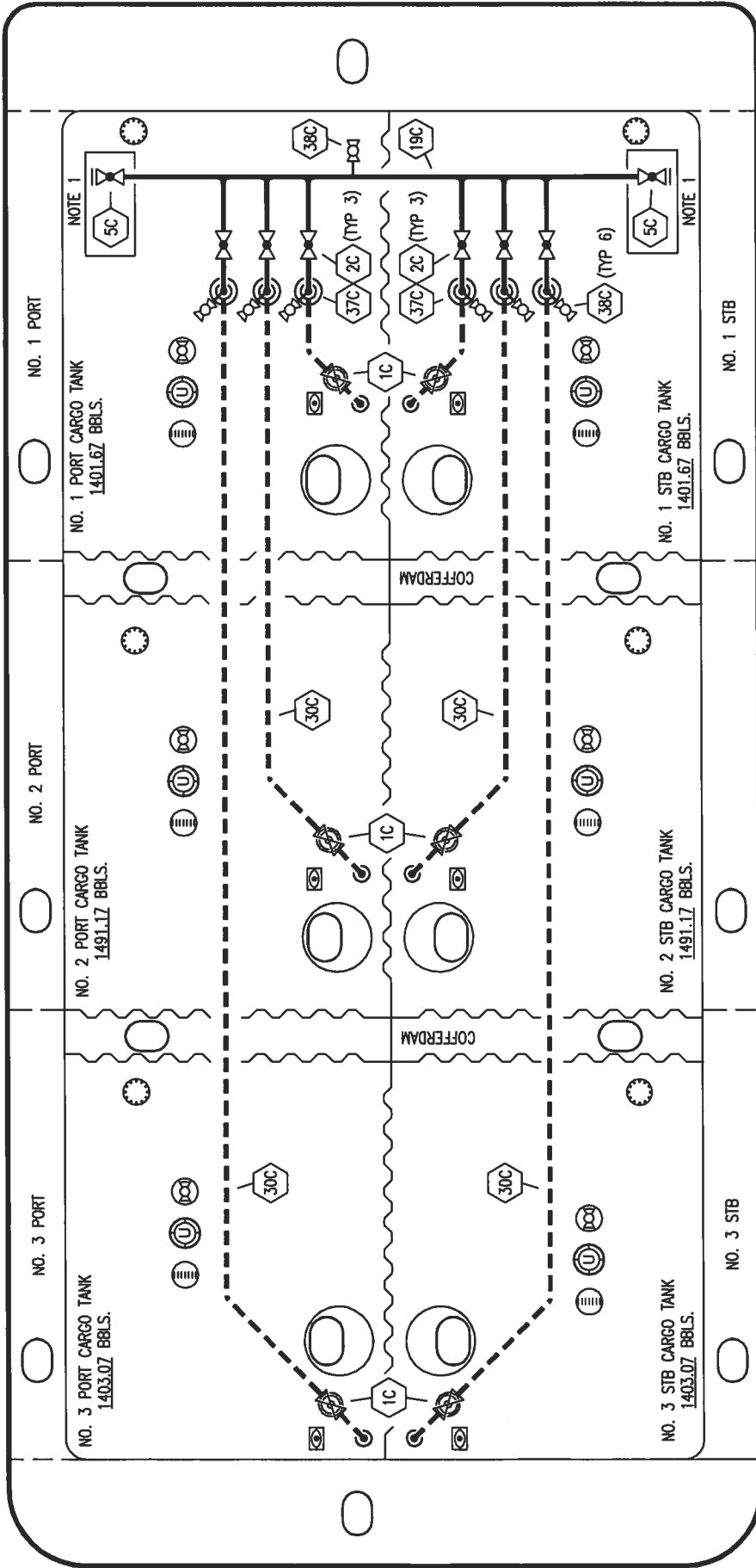


PORT

STERN

BOW

STARBOARD



NOTE 1

NOTE 1

NOTE 1: CONTAINMENT P/S

ST. LOUIS SHIPYARD - EX: USL 448



KIRBY INLAND MARINE

CARGO

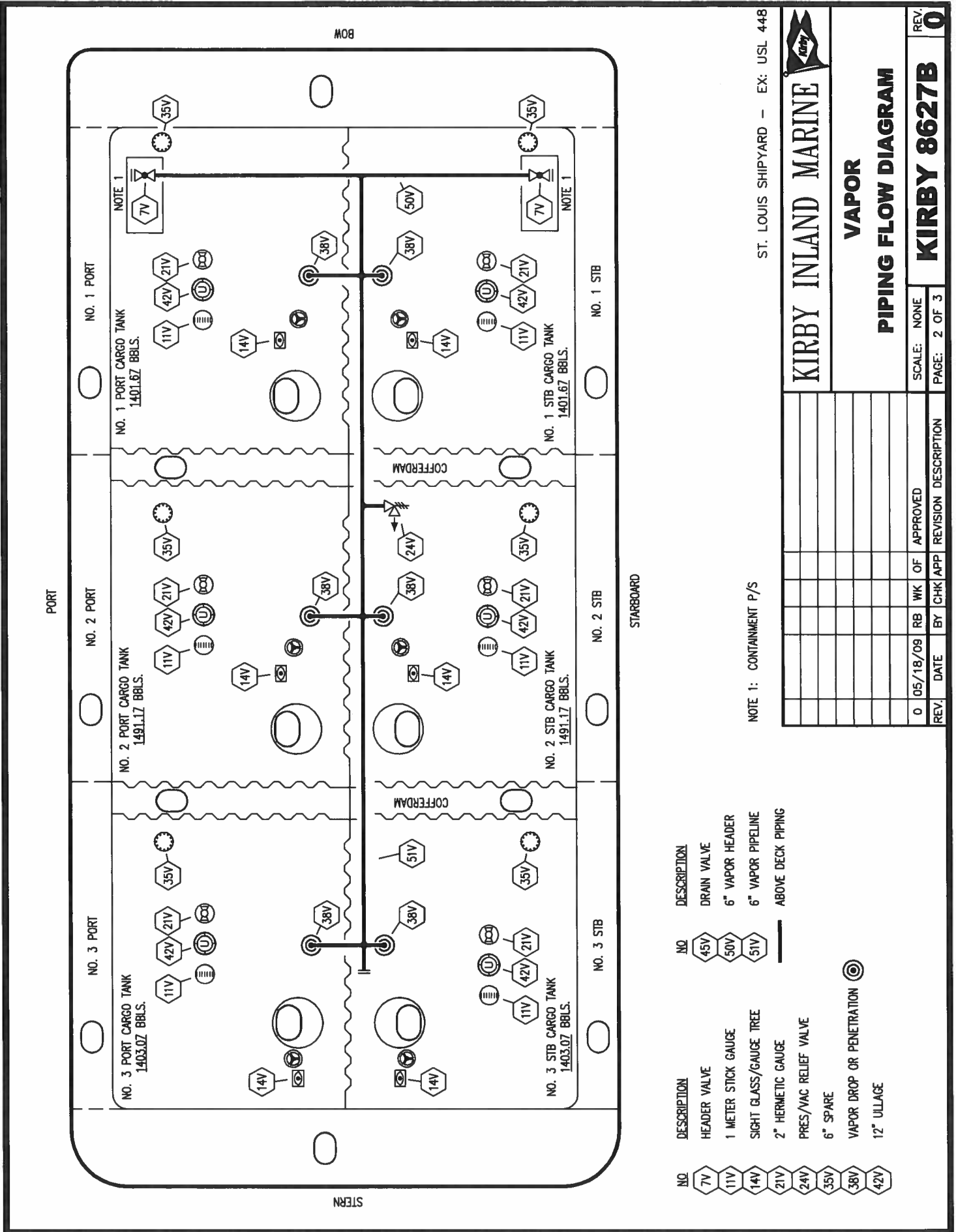
PIPING FLOW DIAGRAM

REV.	DATE	BY	CHK	APP	REVISION DESCRIPTION
0	05/18/09	RB	WK	OF	APPROVED


SCALE: NONE  
PAGE: 1 OF 3  
REV. 0

KIRBY 8627B

- NO DESCRIPTION
- 1C CARGO TANK VALVE
- 2C LOAD VALVE
- 5C HEADER VALVE
- 19C 8" CARGO HEADER
- 30C 6" CARGO PIPELINE
- 37C CARGO DROP
- 38C DRAIN VALVE
- ABOVE DECK PIPING
- - - BELOW DECK PIPING



- |     |                           |     |                   |
|-----|---------------------------|-----|-------------------|
| NO  | DESCRIPTION               | NO  | DESCRIPTION       |
| 7V  | HEADER VALVE              | 45V | DRAIN VALVE       |
| 11V | 1 METER STICK GAUGE       | 50V | 6" VAPOR HEADER   |
| 14V | SIGHT GLASS/GAUGE TREE    | 51V | 6" VAPOR PIPELINE |
| 21V | 2" HERMETIC GAUGE         | --- | ABOVE DECK PIPING |
| 24V | PRES/VAC RELIEF VALVE     |     |                   |
| 35V | 6" SPARE                  |     |                   |
| 38V | VAPOR DROP OR PENETRATION |     |                   |
| 42V | 12" ULLAGE                |     |                   |



# KIRBY INLAND MARINE

## VAPOR PIPING FLOW DIAGRAM

REV.	DATE	BY	CHK/APP	REVISION DESCRIPTION
0	05/18/09	RB	WK	OF APPROVED

SCALE: NONE	REV: 0
PAGE: 2 OF 3	
<b>KIRBY 8627B</b>	

