

NO	DESCRIPTION	NO	DESCRIPTION
1C	8" CARGO TANK VALVE	13C	12" BLOCK VALVE
2C	8" LOAD VALVE	19C	8" CARGO HEADER
3C	12" MASTER SUCTION VALVE	23C	SEA CHEST BLOCK VALVE
4C	8" DISCHARGE VALVE	30C	12" CARGO PIPELINE
5C	8" HEADER VALVE	31C	2" BYPASS VALVE
8C	6" RELIEF VALVE	37C	CARGO DROP
9C	8" CHECK VALVE		
	ABOVE DECK PIPING		
	BELOW DECK PIPING		

NOTE 1: CONTAINMENT P/S
 NOTE 2: 500 GAL. FUEL TANK
 NOTE 3: VALVE HATCH

WEST GULF MARINE – BBL. CAPACITY = 32050 BBLs.

REV.	DATE	BY	CHK	APP	REVISION DESCRIPTION
2	05/21/18	WFB	DDA		REVISED PER CLIENT COMMENTS
1	01/10/11	RB	RB	OF	ADD SEA CHEST & VALVE
0	05/14/10	RB	RB	OF	APPROVED

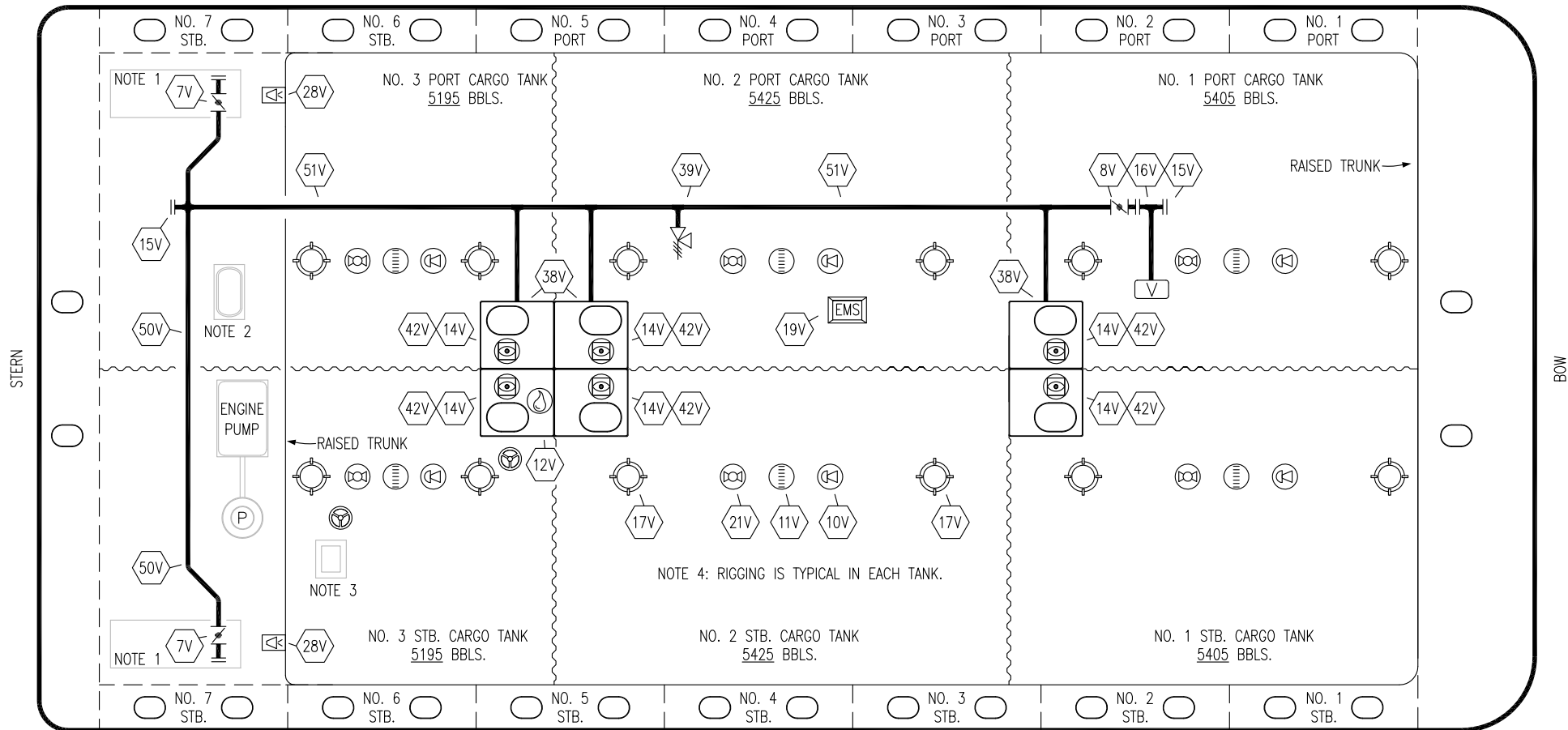
KIRBY INLAND MARINE

CARGO

PIPING FLOW DIAGRAM

SCALE: NONE	KIRBY 32005B	REV. 2
PAGE: 1 OF 3		

PORT



STERN

BOW

STARBOARD

NO	DESCRIPTION	NO	DESCRIPTION
7V	8" HEADER VALVE	19V	EMERGENCY ENGINE SHUT DOWN
8V	8" VENT STACK VALVE	21V	HERMETIC GAUGE
10V	HIGH LEVEL/OVERFILL ALARM	28V	DOCK CONNECTION ALARM
11V	GAUGE STICK	38V	VAPOR PENETRATION
11N	NITROGEN PIPELINE	39V	6" PRESSURE/VACUUM VALVE
12V	HERMETIC SAMPLE	42V	CARGO HATCH
14V	SIGHT GLASS W/ GAUGE TREE	50V	10" VAPOR HEADER
14N	NITROGEN CONTROL VALVE	51V	10" VAPOR PIPELINE
15V	INSPECTION PORT		ABOVE DECK PIPING
16V	8" VAPOR VENT STACK		
17V	23" BUTTERWORTH		

- NOTE 1: CONTAINMENT P/S
- NOTE 2: 500 GAL. FUEL TANK
- NOTE 3: VALVE HATCH
- NOTE 4: RIGGING IS TYPICAL IN EACH TANK.

WEST GULF MARINE - BBL. CAPACITY = 32050 BBLs.

REV.	DATE	BY	CHK	APP	REVISION DESCRIPTION
2	05/21/18	WFB	DDA		REVISED PER CLIENT COMMENT
1	04/14/14	JM	DDA		REVISED PER CLIENT COMMENT
0	05/14/10	RB	RB	OF	APPROVED

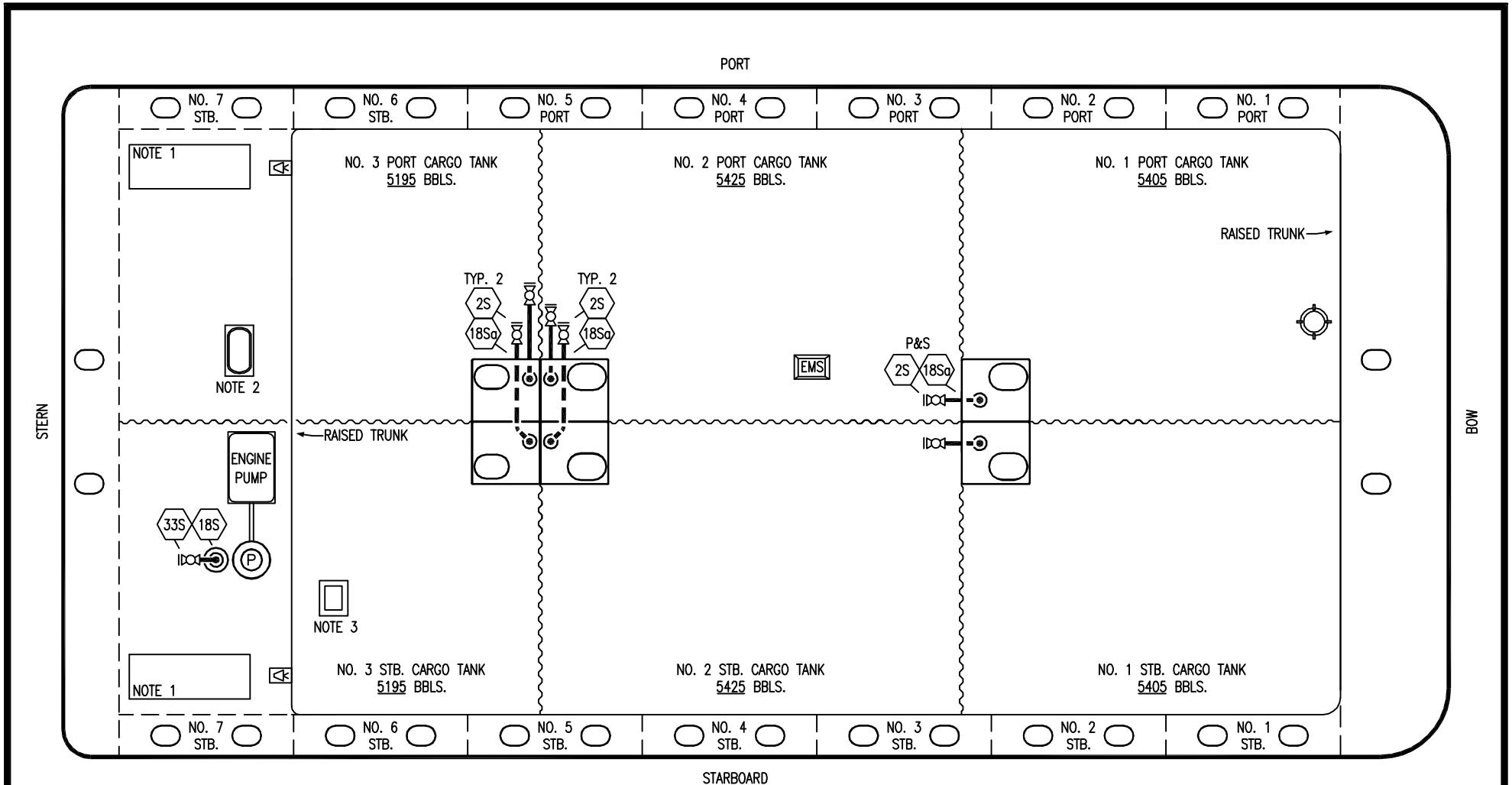
KIRBY INLAND MARINE 

**VAPOR
PIPING FLOW DIAGRAM**

SCALE: NONE
PAGE: 2 OF 3

KIRBY 32005B

REV. **2**



- | NO | DESCRIPTION |
|------|--------------------------|
| 2S | CARGO SUMP SUCTION VALVE |
| 18S | STRIPPING DROP |
| 18Sq | STRIPPING PENETRATION |
| 33S | PUMP WELL SUCTION VALVE |

— ABOVE DECK PIPING
 - - - BELOW DECK PIPING

NOTE 1: CONTAINMENT P/S
 NOTE 2: 500 GAL. FUEL TANK
 NOTE 3: VALVE HATCH

WEST GULF MARINE - BBL. CAPACITY = 32050 BBLs.

0	05/14/10	RB	RB	OF	APPROVED		
REV.	DATE	BY	CHK	APP	REVISION DESCRIPTION		

KIRBY INLAND MARINE

**STRIPPING
 PIPING FLOW DIAGRAM**

SCALE: NONE
 PAGE: 3 OF 3