

NO	DESCRIPTION	NO	DESCRIPTION
1C	8" CARGO TANK VALVE	13C	12" BLOCK VALVE
2C	8" LOAD VALVE	19C	8" CARGO HEADER
3C	12" MASTER SUCTION VALVE	23C	SEA CHEST BLOCK VALVE
4C	8" DISCHARGE VALVE	30C	12" CARGO PIPELINE
5C	8" HEADER VALVE	31C	2" BYPASS VALVE
6C	8" SPOOL PIECE	37C	CARGO DROP
8C	6" RELIEF VALVE	—	— ABOVE DECK PIPING
9C	8" CHECK VALVE	- - -	BELOW DECK PIPING

NOTE 1: CONTAINMENT P/S
 NOTE 2: 500 GAL. FUEL TANK
 NOTE 3: VALVE HATCH

WEST GULF MARINE - BBL. CAPACITY = 32050 BBLs.

REV.	DATE	BY	CHK	APP	REVISION DESCRIPTION
2	12/11/14	DDA	DDA	OF	REVISED PER CLIENT COMMENTS
1	01/10/11	RB	RB	OF	ADD SEA CHEST & VALVE
0	05/14/10	RB	RB	OF	APPROVED

KIRBY INLAND MARINE

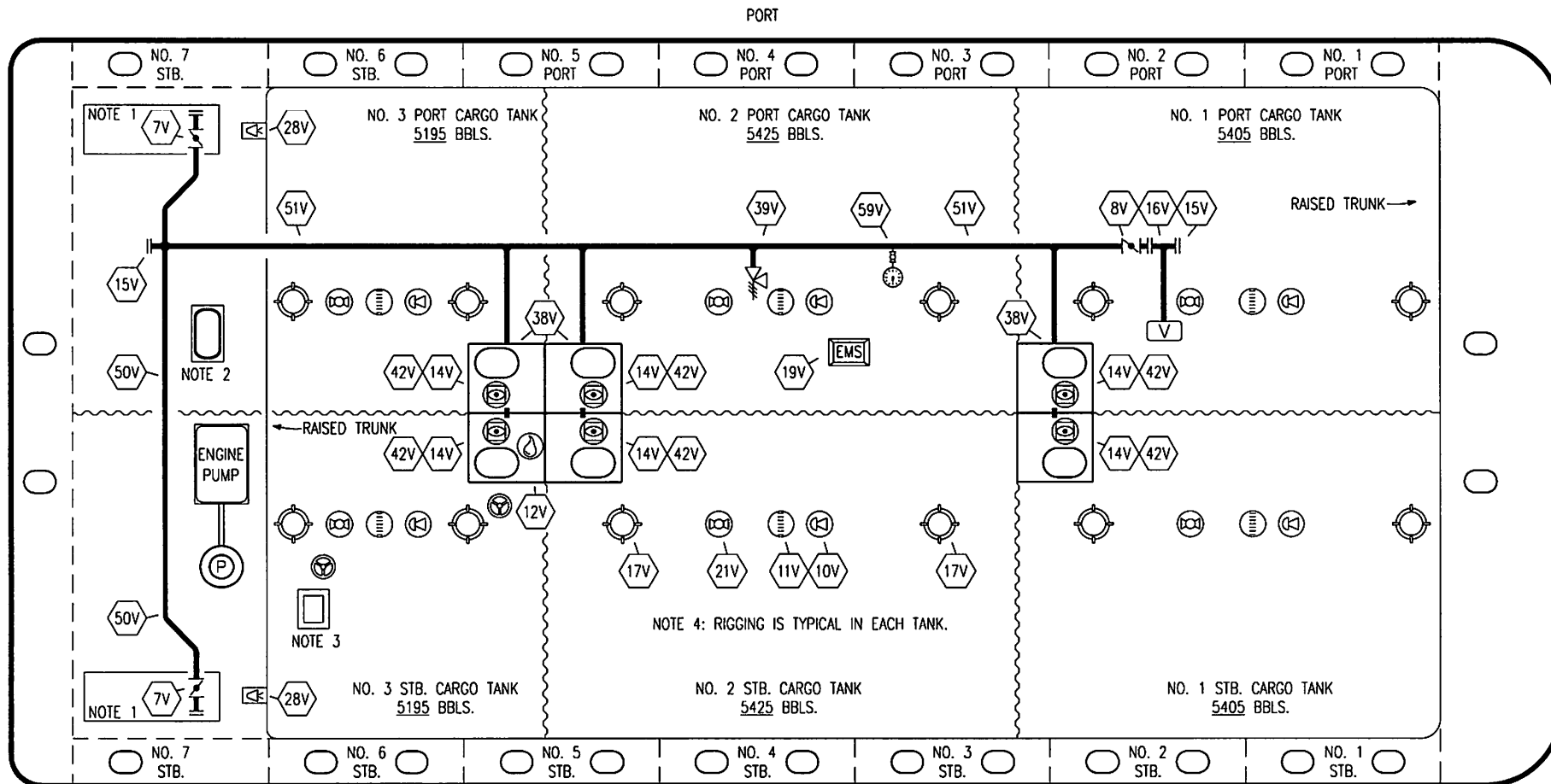
CARGO

PIPING FLOW DIAGRAM

KIRBY 32004B

SCALE: NONE
 PAGE: 1 OF 3

REV. **2**



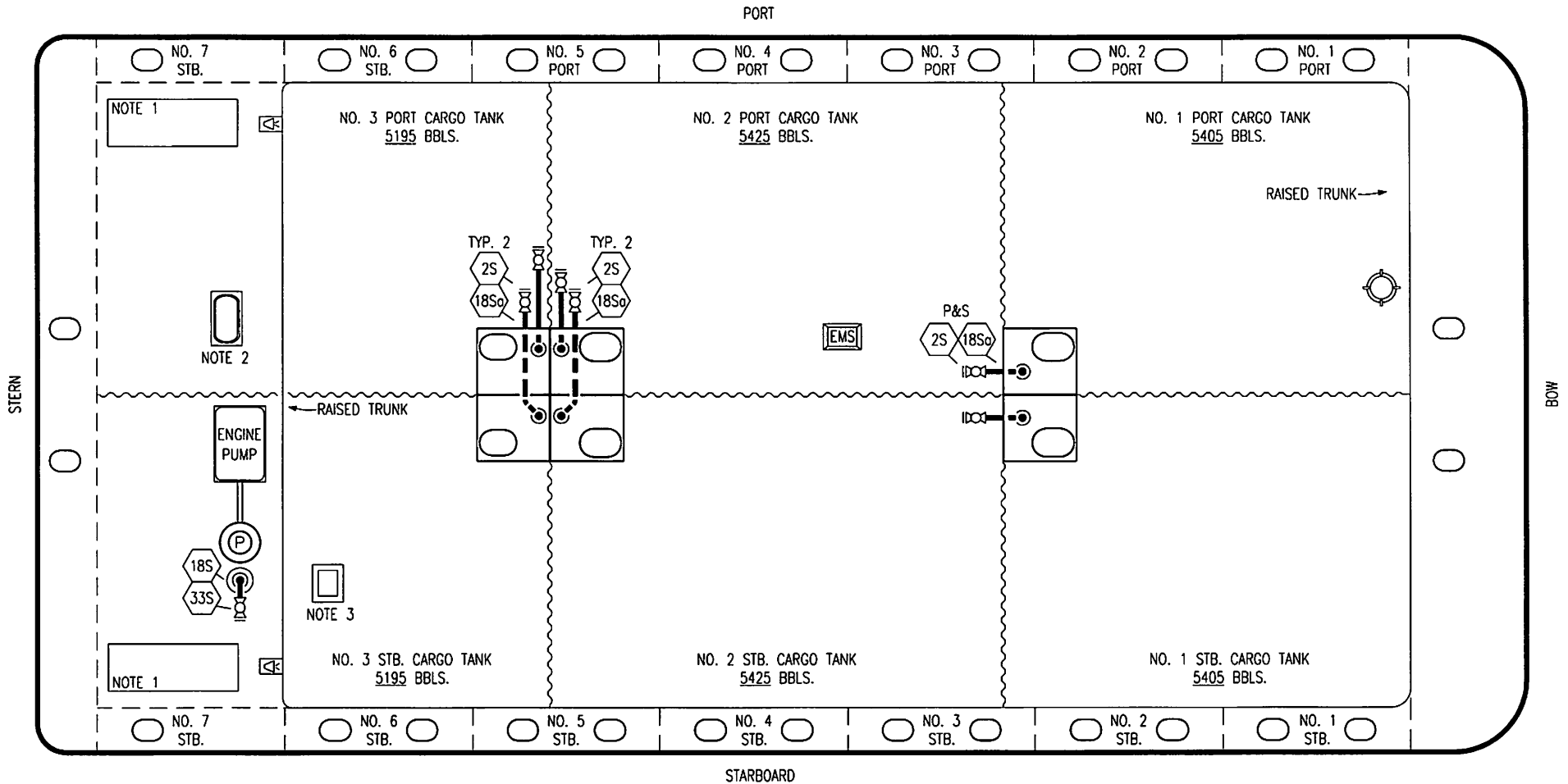
NO	DESCRIPTION	NO	DESCRIPTION
7V	10" HEADER VALVE	19V	EMERGENCY ENGINE SHUT DOWN
8V	10" VENT STACK VALVE	21V	HERMETIC GAUGE
10V	HIGH LEVEL/OVERFILL ALARM	28V	DOCK CONNECTION ALARM
11V	GAUGE STICK	38V	VAPOR PENETRATION
12V	HERMETIC SAMPLE	39V	6" PRESSURE/VACUUM VALVE
14V	SIGHT GLASS W/ GAUGE TREE	42V	ULLAGE HATCH
15V	INSPECTION PORT	50V	10" VAPOR HEADER
16V	10" VAPOR VENT STACK	51V	10" VAPOR PIPELINE
17V	23" BUTTERWORTH	59V	PRESS/VAC GAUGE
			ABOVE DECK PIPING

STARBOARD

- NOTE 1: CONTAINMENT P/S
- NOTE 2: 500 GAL. FUEL TANK
- NOTE 3: VALVE HATCH
- NOTE 4: RIGGING IS TYPICAL IN EACH TANK.

WEST GULF MARINE - BBL. CAPACITY = 32050 BBLs.

<h2 style="margin: 0;">KIRBY INLAND MARINE</h2>					
<h3 style="margin: 0;">VAPOR PIPING FLOW DIAGRAM</h3>					
1	12/11/14	DDA	DDA	OF	REVISED PER CLIENT COMMENTS
0	05/14/10	RB	RB	OF	APPROVED
REV.	DATE	BY	CHK	APP	REVISION DESCRIPTION
					SCALE: NONE
					PAGE: 2 OF 3
<h1 style="margin: 0;">KIRBY 32004B</h1>					REV. 1



- | NO | DESCRIPTION |
|-------|--------------------------|
| 2S | CARGO SUMP SUCTION VALVE |
| 18S | STRIPPING DROP |
| 18So | STRIPPING PENETRATION |
| 33S | PUMP WELL SUCTION VALVE |
| — | ABOVE DECK PIPING |
| - - - | BELOW DECK PIPING |

- NOTE 1: CONTAINMENT P/S
- NOTE 2: 500 GAL. FUEL TANK
- NOTE 3: VALVE HATCH

WEST GULF MARINE - BBL. CAPACITY = 32050 BBLs.

<h2 style="margin: 0;">KIRBY INLAND MARINE</h2>								
<h3 style="margin: 0;">STRIPPING</h3> <h3 style="margin: 0;">PIPING FLOW DIAGRAM</h3>								
REV.	DATE	BY	CHK	APP	REVISION DESCRIPTION	SCALE: NONE	<h1 style="margin: 0;">KIRBY 32004B</h1>	REV. 1
1	12/11/14	DDA	DDA	OF	REVISED PER CLIENT COMMENTS			
0	05/14/10	RB	RB	OF	APPROVED			
						PAGE: 3 OF 3		