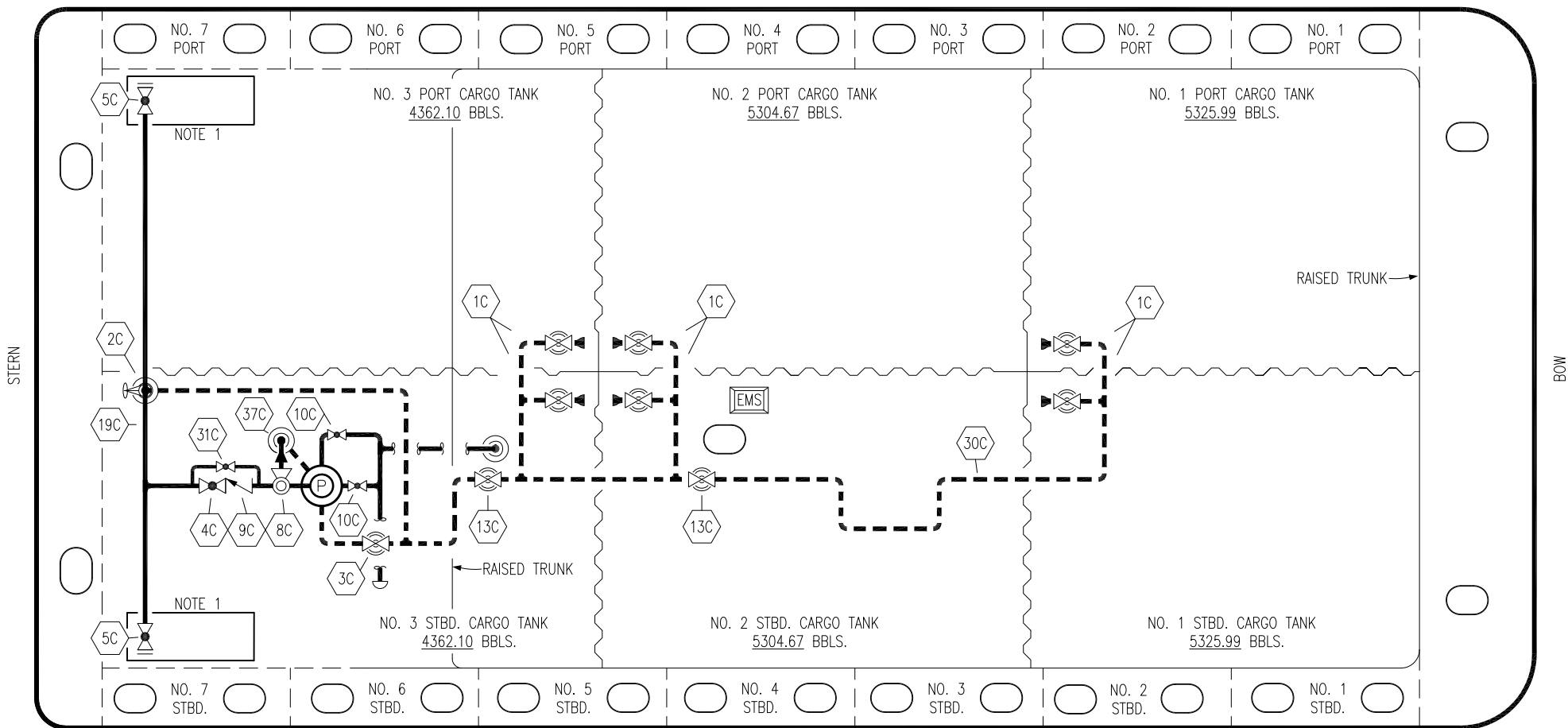



PORT




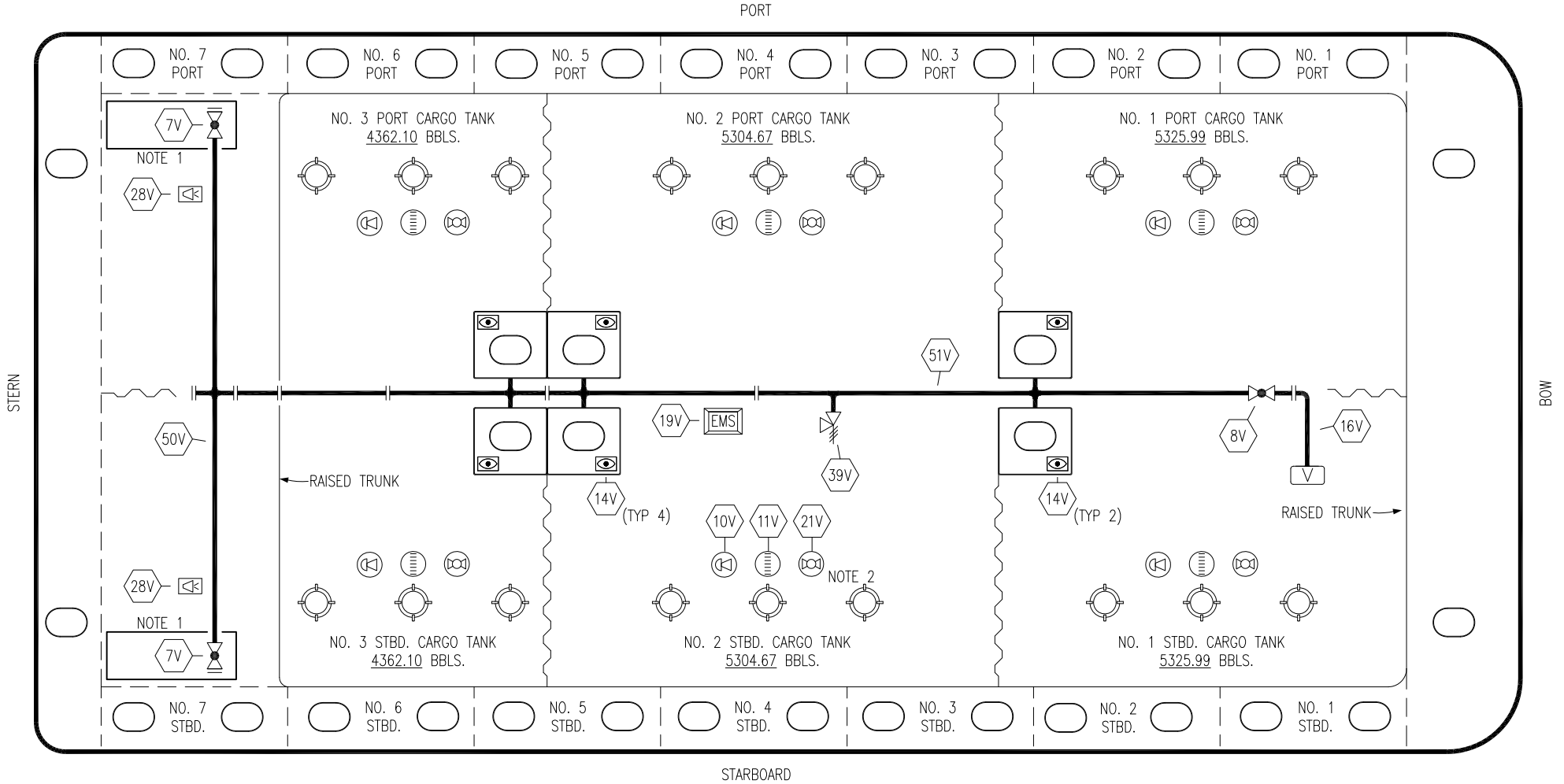
STARBOARD

NO	DESCRIPTION	NO	DESCRIPTION
1C	CARGO TANK VALVE	30C	CARGO PIPELINE
2C	LOAD VALVE	31C	BYPASS VALVE
3C	MASTER SUCTION VALVE	37C	CARGO DROP 
4C	DISCHARGE VALVE	—	— ABOVE DECK PIPING
5C	HEADER VALVE	—	— BELOW DECK PIPING
8C	RELIEF VALVE		
9C	CHECK VALVE		
10C	BURP VALVE		
13C	CARGO PIPING BLOCK VALVE		
19C	CARGO HEADER		

NOTE 1: CONTAINMENT P/S

EX: SMS 30017

					KIRBY INLAND MARINE 	
					CARGO PIPING FLOW DIAGRAM	
0	12/01/20	MRV	DDA	TL	ISSUED FOR APPROVAL	SCALE: NONE
REV.	DATE	BY	CHK	APP	REVISION DESCRIPTION	PAGE: 1 OF 3
					KIRBY 31010	REV. 0



- | | | | |
|-----|----------------------------|----------|------------------------------|
| NO | <u>DESCRIPTION</u> | NO | <u>DESCRIPTION</u> |
| 7V | HEADER VALVE | 21V | HERMETIC GAUGE |
| 8V | VENT STACK VALVE | 28V | DOCK CONNECTION ALARM |
| 10V | HIGH LEVEL/OVERFILL ALARM | 39V | PRESSURE/VACUUM RELIEF VALVE |
| 11V | 1-METER GAUGE STICK | 50V | VAPOR HEADER |
| 14V | SIGHT GLASS | 51V | VAPOR PIPELINE |
| 16V | VAPOR VENT STACK | — | ABOVE DECK PIPING |
| 19V | EMERGENCY ENGINE SHUT DOWN | | |

NOTE 2: TYPICAL RIGGING IN EACH TANK
 NOTE 1: CONTAINMENT P/S

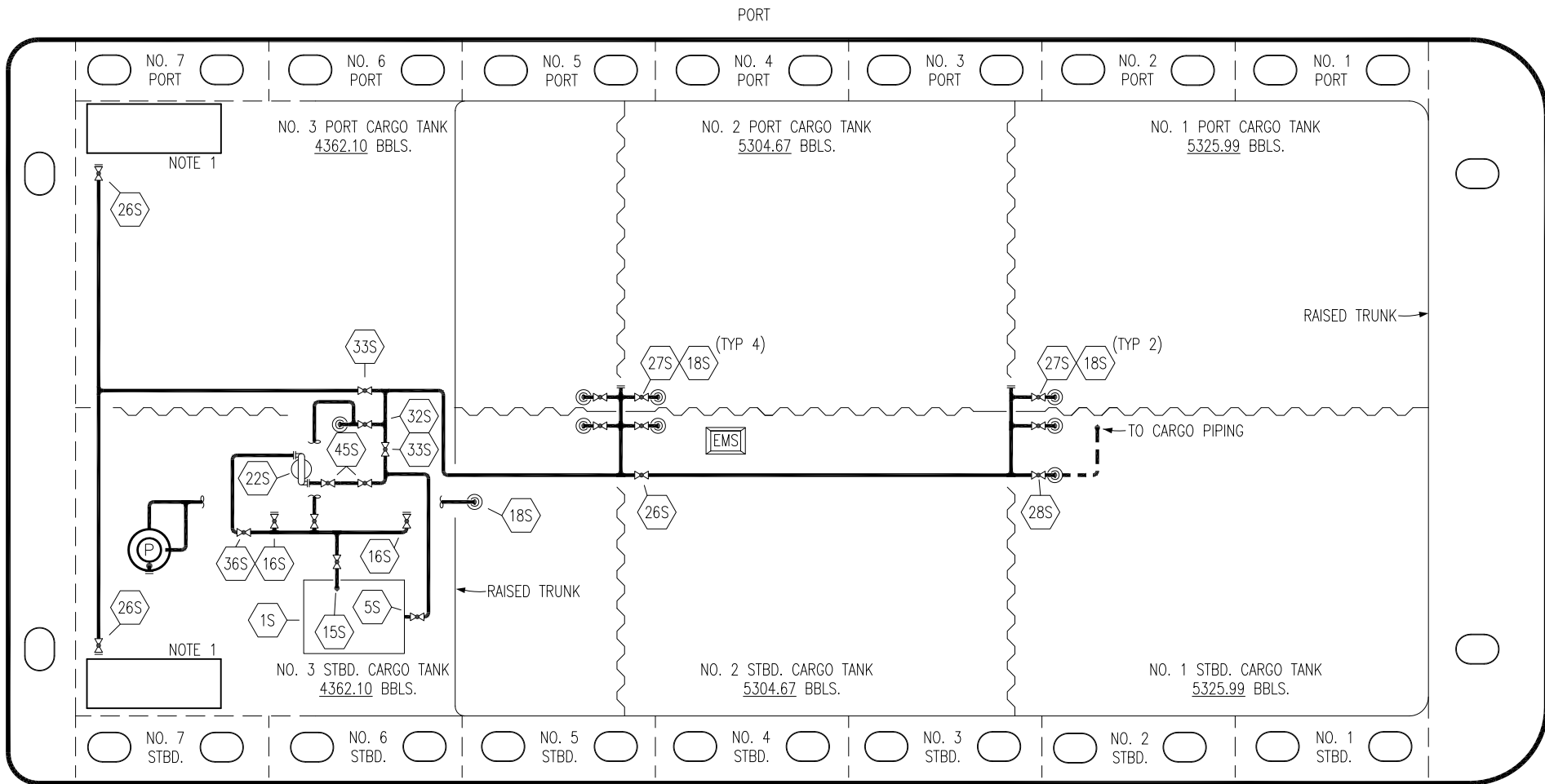
EX: SMS 30017

0	12/01/20	MRV	DDA	TL	ISSUED FOR APPROVAL
REV.	DATE	BY	CHK	APP	REVISION DESCRIPTION

KIRBY INLAND MARINE

VAPOR
PIPING FLOW DIAGRAM

SCALE: NONE	KIRBY 31010	REV. 0
PAGE: 2 OF 3		



- | | | | |
|-----------|------------------------------------|-----------|------------------------------|
| NO | DESCRIPTION | NO | DESCRIPTION |
| 1S | SLOP TANK | 27S | SUMP SUCTION VALVE |
| 5S | SLOP TANK SUCTION VALVE | 28S | CARGO PIPING SUCTION |
| 10S | STRIPPING PUMP CHECK VALVE | 31S | CHECK VALVE |
| 11S | LOWER CARGO PIPELINE SUCTION VALVE | 32S | PUMP WELL PRIMER VALVE |
| 15S | DISCHARGE VALVE | 33S | PUMP WELL SUCTION |
| 16S | REMOTE SUCTION CONNECTION | 36S | STRIPPING PUMP DISCHARGE |
| 18S | TYP. STRIPPING PENETRATION | 45S | STRIPPING PUMP SUCTION VALVE |
| 22S | STRIPPING PUMP | — | — ABOVE DECK PIPING |
| 26S | HEADER BLOCK VALVE | - - - | - - - BELOW DECK PIPING |

NOTE 1: CONTAINMENT P/S

EX: SMS 30017

0	12/01/20	MRV	DDA	TL	ISSUED FOR APPROVAL
REV.	DATE	BY	CHK	APP	REVISION DESCRIPTION



KIRBY INLAND MARINE

**STRIPPING
PIPING FLOW DIAGRAM**

KIRBY 31010

SCALE: NONE	REV. 0
PAGE: 3 OF 3	