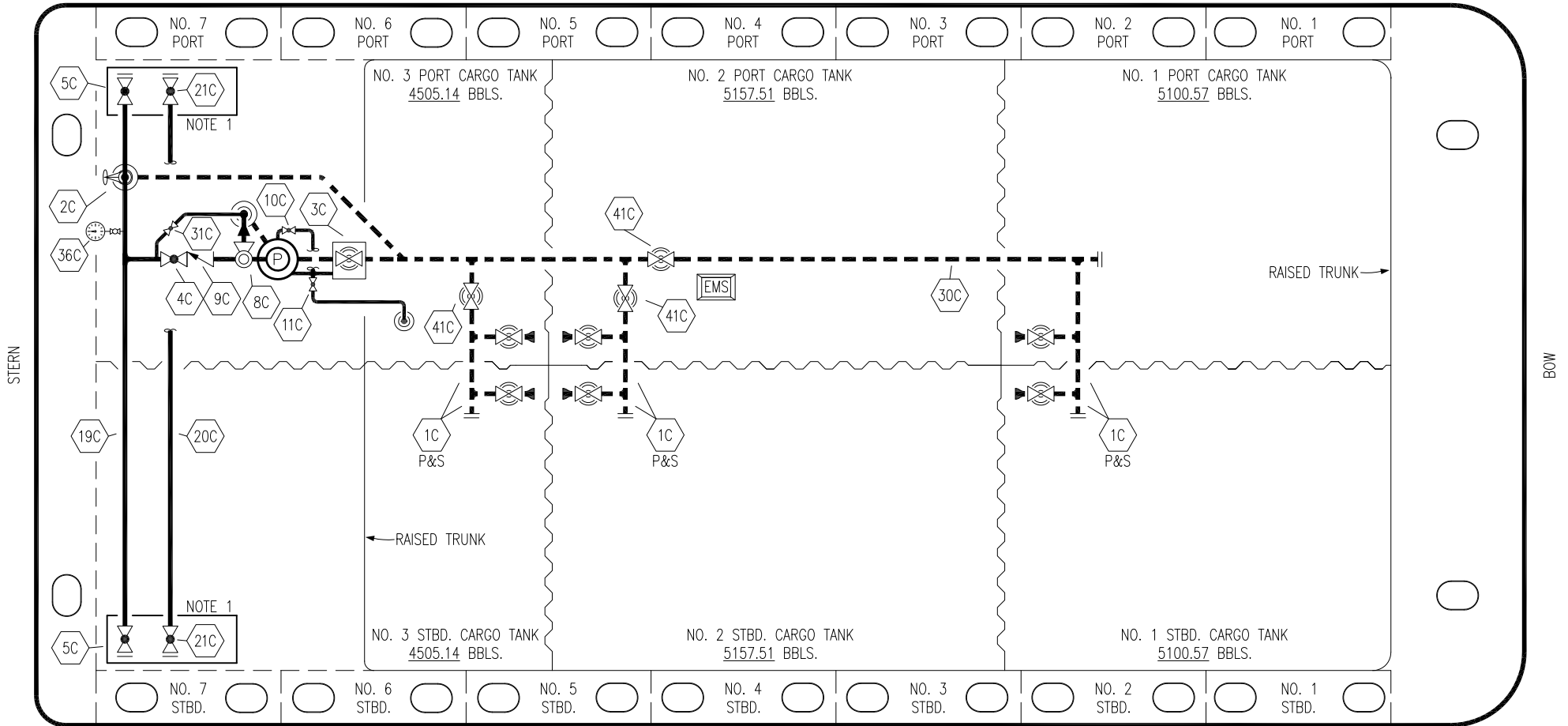


PORT



STERN

BOW

STARBOARD

- | | | | |
|-----|---------------------------------|-------|-------------------------|
| NO | DESCRIPTION | NO | DESCRIPTION |
| 1C | CARGO TANK VALVE | 19C | CARGO HEADER |
| 2C | LOAD VALVE | 20C | DUMMY PIPELINE |
| 3C | MASTER SUCTION VALVE | 21C | DUMMY HEADER VALVE |
| 4C | DISCHARGE VALVE | 30C | CARGO PIPELINE |
| 5C | HEADER VALVE | 31C | BYPASS VALVE |
| 8C | RELIEF VALVE | 36C | PRESSURE GAUGE |
| 9C | CHECK VALVE | 37C | CARGO DROP |
| 10C | BURP VALVE | 41C | SUCTION BLOCK VALVE |
| 11C | BLEED OFF VALVE | — | — ABOVE DECK PIPING |
| 12C | BURP VALVE RETURN TO CARGO TANK | - - - | - - - BELOW DECK PIPING |

NOTE 1: CONTAINMENT P/S

EX: SMS 30016

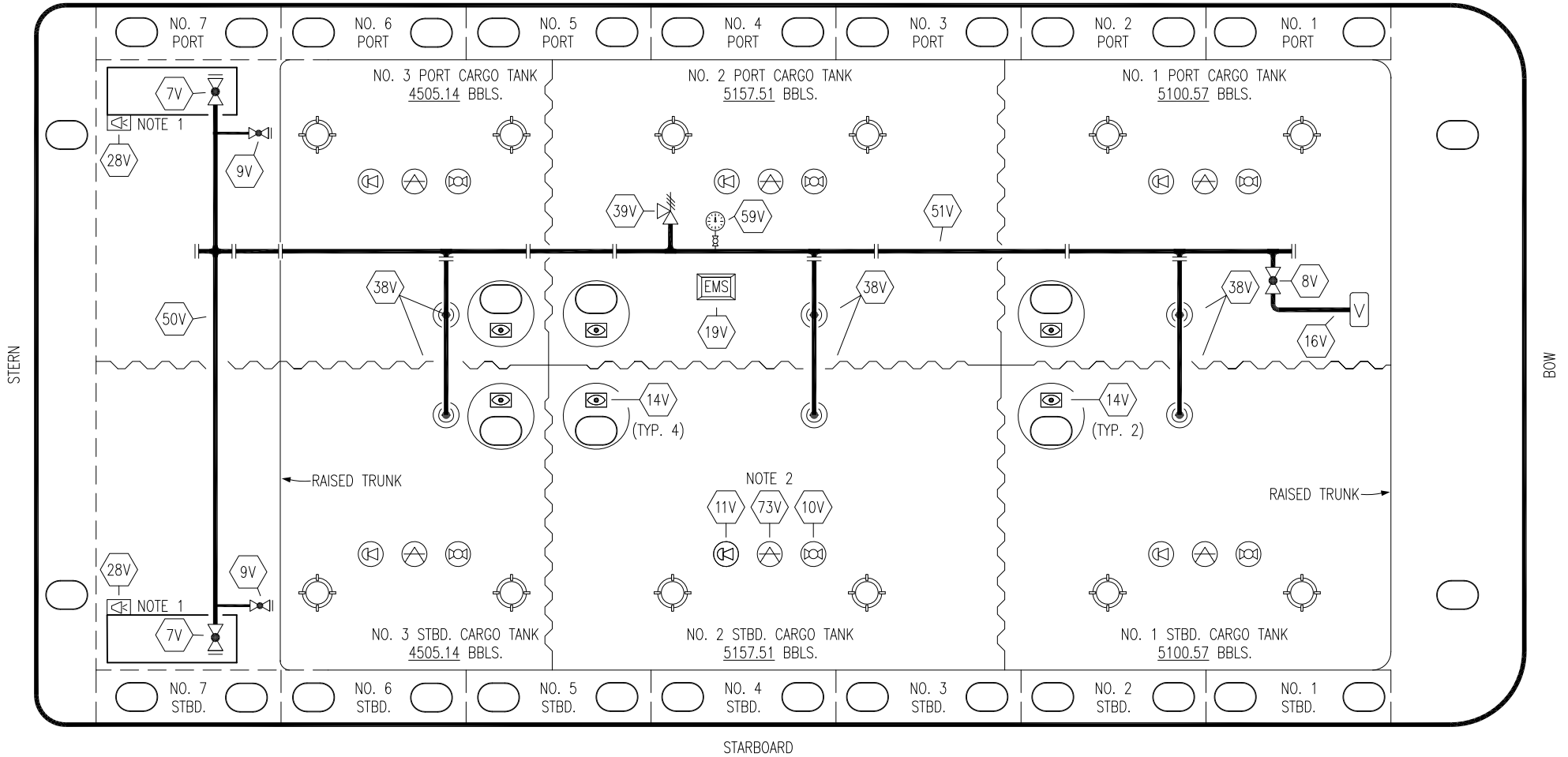
0	08/06/21	MRV	DDA	DAR	ISSUED FOR APPROVAL
REV.	DATE	BY	CHK	APP	REVISION DESCRIPTION

KIRBY INLAND MARINE

**CARGO
PIPING FLOW DIAGRAM**

SCALE: NONE	KIRBY 31009	REV. 0
PAGE: 1 OF 3		

PORT



STARBOARD

- | | | | |
|-----|----------------------------|-----|--------------------------|
| NO | DESCRIPTION | NO | DESCRIPTION |
| 7V | 8" HEADER VALVE | 38V | 8" VAPOR PENETRATION (⊙) |
| 8V | 8" VENT STACK VALVE | 39V | PRESSURE/VACUUM VALVE |
| 9V | DRAIN VALVE | 50V | 8" VAPOR HEADER |
| 10V | HIGH LEVEL/OVERFILL ALARM | 51V | 8" VAPOR PIPELINE |
| 11V | 1-METER GAUGE STICK | 59V | PRESS/VAC GAUGE |
| 16V | VAPOR VENT STACK | 73V | MMC GAUGE POINT |
| 19V | EMERGENCY ENGINE SHUT DOWN | — | ABOVE DECK PIPING |
| 28V | DOCK CONNECTION ALARM | | |

NOTE 2: TYPICAL RIGGING IN EACH TANK
 NOTE 1: CONTAINMENT P/S

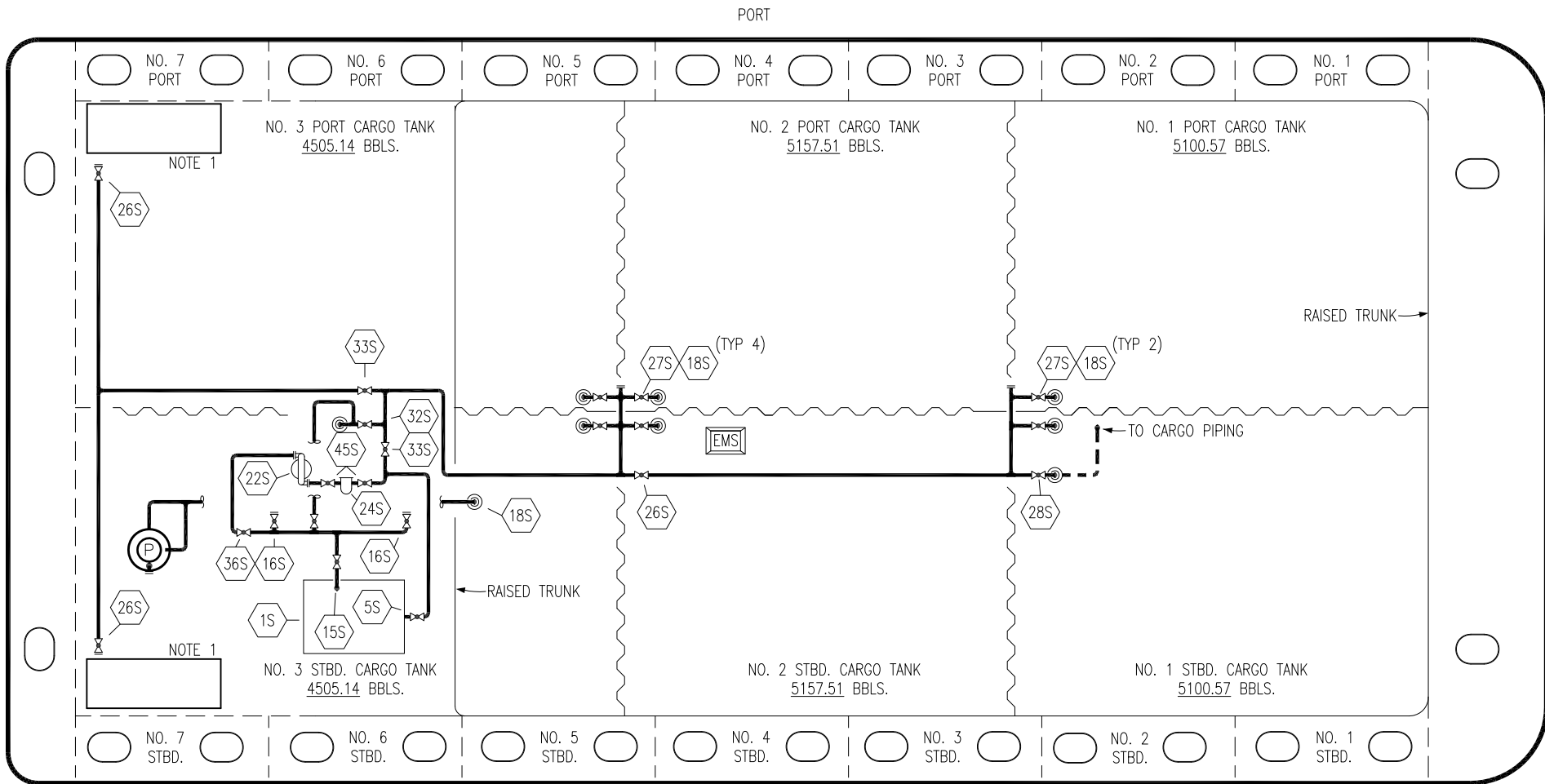
EX: SMS 30016

0	08/06/21	MRV	DDA	DAR	ISSUED FOR APPROVAL
REV.	DATE	BY	CHK	APP	REVISION DESCRIPTION

KIRBY INLAND MARINE

**VAPOR
PIPING FLOW DIAGRAM**

SCALE: NONE	KIRBY 31009	REV. 0
PAGE: 2 OF 3		



NO	DESCRIPTION	NO	DESCRIPTION
1S	SLOP TANK	27S	SUMP SUCTION VALVE
5S	SLOP TANK SUCTION VALVE	28S	CARGO PIPING SUCTION
10S	STRIPPING PUMP CHECK VALVE	31S	CHECK VALVE
11S	LOWER CARGO PIPELINE SUCTION VALVE	32S	PUMP WELL PRIMER VALVE
15S	DISCHARGE VALVE	33S	PUMP WELL SUCTION
16S	REMOTE SUCTION CONNECTION	36S	STRIPPING PUMP DISCHARGE
18S	TYP. STRIPPING PENETRATION	45S	STRIPPING PUMP SUCTION VALVE
22S	STRIPPING PUMP	—	— ABOVE DECK PIPING
24S	BASKET STRAINER	---	--- BELOW DECK PIPING
26S	HEADER BLOCK VALVE		

NOTE 1: CONTAINMENT P/S

EX: SMS 30016

0	08/06/21	MRV	DDA	DAR	ISSUED FOR APPROVAL
REV.	DATE	BY	CHK	APP	REVISION DESCRIPTION

KIRBY INLAND MARINE 

**STRIPPING
PIPING FLOW DIAGRAM**

SCALE: NONE
PAGE: 3 OF 3

KIRBY 31009

REV. **0**