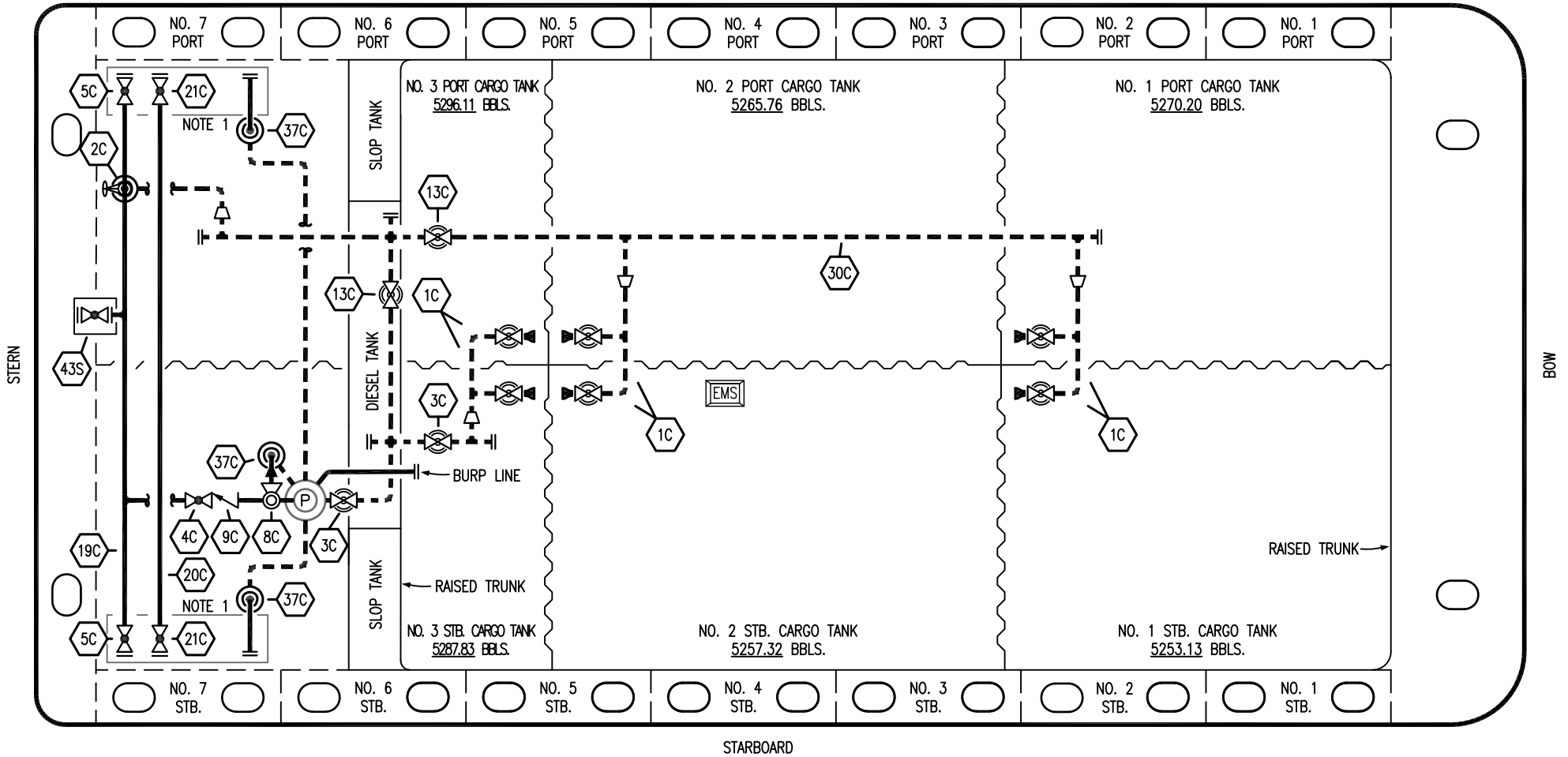


PORT




STARBOARD

- | | | | |
|-----|--------------------------|-------|-------------------------|
| NO | DESCRIPTION | NO | DESCRIPTION |
| 1C | CARGO TANK VALVE | 19C | CARGO HEADER |
| 2C | LOAD VALVE | 20C | DUMMY HEADER PIPING |
| 3C | MASTER SUCTION VALVE | 21C | DUMMY HEADER VALVE |
| 4C | DISCHARGE VALVE | 30C | CARGO PIPELINE |
| 5C | HEADER VALVE | 37C | CARGO DROP |
| 8C | RELIEF VALVE | 43S | STERN HEADER VALVE |
| 9C | CHECK VALVE | — | — ABOVE DECK PIPING |
| 10C | BURP VALVE | - - - | - - - BELOW DECK PIPING |
| 13C | CARGO PIPING BLOCK VALVE | | |

NOTE 1: CONTAINMENT P/S

TRINITY EX. CTCO 357B

REV.	DATE	BY	CHK	APP	REVISION DESCRIPTION
1	12/12/22	MRV	DDA	LEP	REVISED PER CLIENT COMMENTS
0	02/20/19	MRV	DDA		ISSUED FOR APPROVAL



KIRBY INLAND MARINE

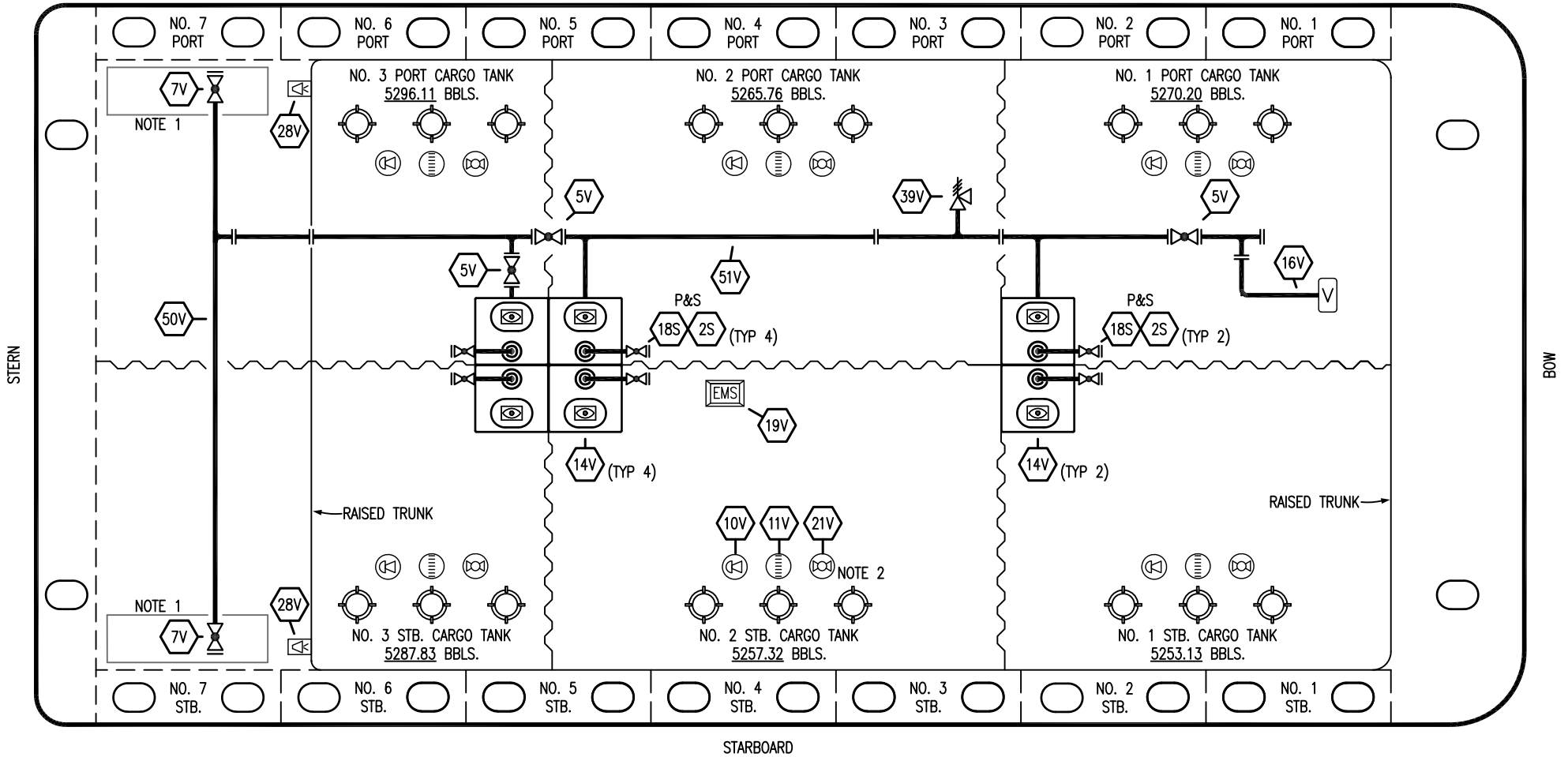
CARGO

PIPING FLOW DIAGRAM

KIRBY 31006B

SCALE: NONE	REV. 1
PAGE: 1 OF 2	

PORT



- | | | | |
|-----|---------------------------|-----|----------------------------|
| NO | DESCRIPTION | NO | DESCRIPTION |
| 5V | BLOCK VALVE | 19V | EMERGENCY ENGINE SHUT DOWN |
| 7V | HEADER VALVE | 21V | HERMETIC GAUGE |
| 8V | VENT STACK VALVE | 28V | DOCK CONNECTION ALARM |
| 10V | HIGH LEVEL/OVERFILL ALARM | 50V | VAPOR HEADER |
| 11V | 1-METER GAUGE STICK | 51V | VAPOR PIPELINE |
| 14V | SIGHT GLASS | 2S | CARGO SUMP SUCTION VALVE |
| 16V | VAPOR VENT STACK | 18S | STRIPPING DROP |
| | | — | ABOVE DECK PIPING |

NOTE 2: TYPICAL RIGGING IN EACH TANK
 NOTE 1: CONTAINMENT P/S

TRINITY EX. CTCO 357B

REV.	DATE	BY	CHK	APP	REVISION DESCRIPTION
1	12/12/22	MRV	DDA	LEP	REVISED PER CLIENT COMMENTS
0	02/20/19	MRV	DDA		ISSUED FOR APPROVAL

KIRBY INLAND MARINE

VAPOR
PIPING FLOW DIAGRAM

KIRBY 31006B

REV. 1

SCALE: NONE
PAGE: 2 OF 2