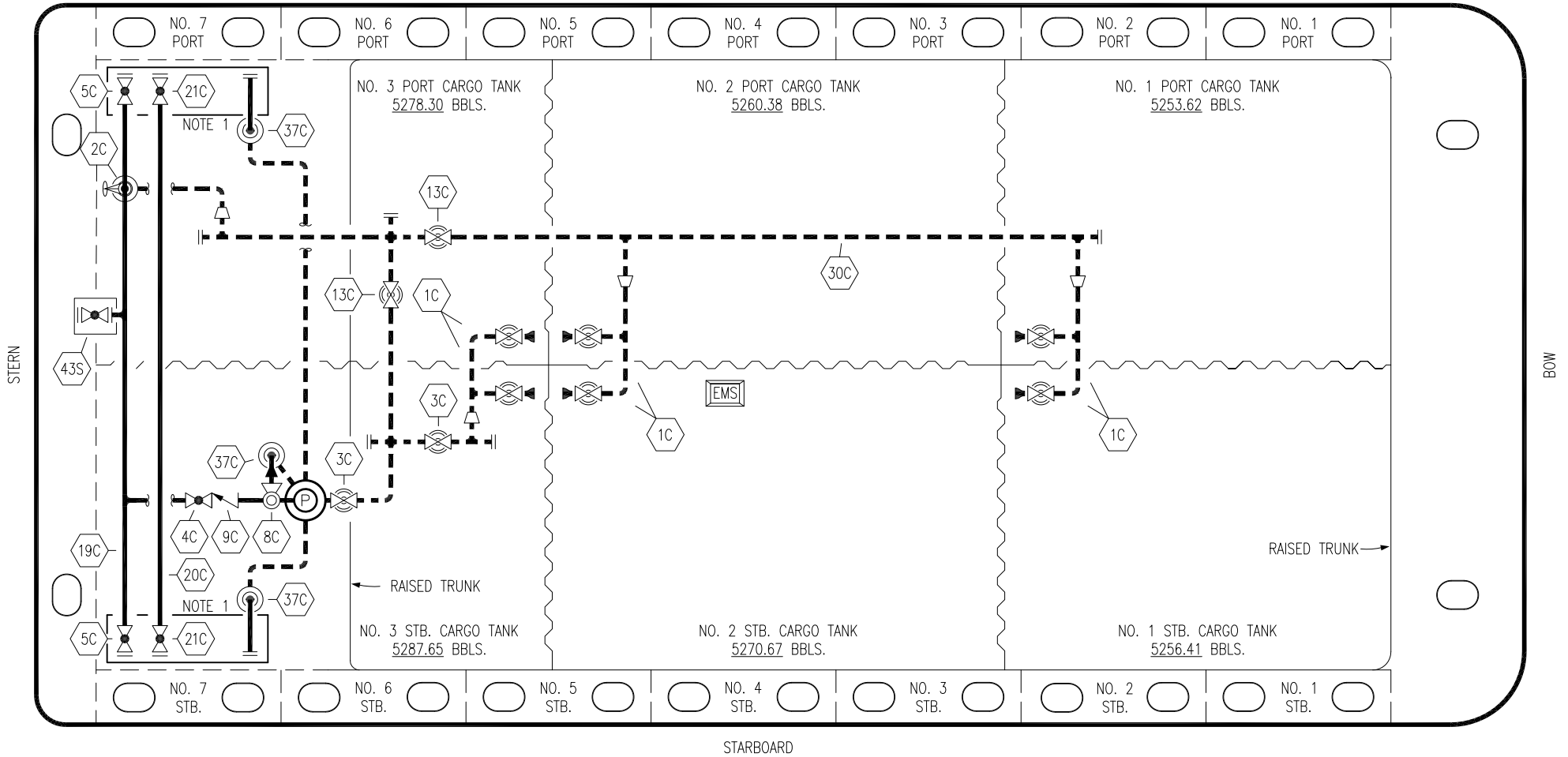


PORT



STERN

BOW

STARBOARD

| | | | |
|-----|--------------------------|-------|---------------------|
| NO | DESCRIPTION | NO | DESCRIPTION |
| 1C | CARGO TANK VALVE | 19C | CARGO HEADER |
| 2C | LOAD VALVE | 20C | DUMMY HEADER PIPING |
| 3C | MASTER SUCTION VALVE | 21C | DUMMY HEADER VALVE |
| 4C | DISCHARGE VALVE | 30C | CARGO PIPELINE |
| 5C | HEADER VALVE | 37C | CARGO DROP |
| 8C | RELIEF VALVE | 43S | STERN HEADER VALVE |
| 9C | CHECK VALVE | — | — ABOVE DECK PIPING |
| 13C | CARGO PIPING BLOCK VALVE | - - - | BELOW DECK PIPING |

NOTE 1: CONTAINMENT P/S

TRINITY EX: CTCO 356B

| | | | | | | |
|------|----------|-----|-----|-----|----------------------|--|
| | | | | | | |
| | | | | | | |
| | | | | | | |
| | | | | | | |
| 1 | 06/10/20 | MRV | DDA | TL | REVISED BARGE NAME | |
| 0 | 02/20/19 | MRV | DDA | | ISSUED FOR APPROVAL | |
| REV. | DATE | BY | CHK | APP | REVISION DESCRIPTION | |

KIRBY INLAND MARINE

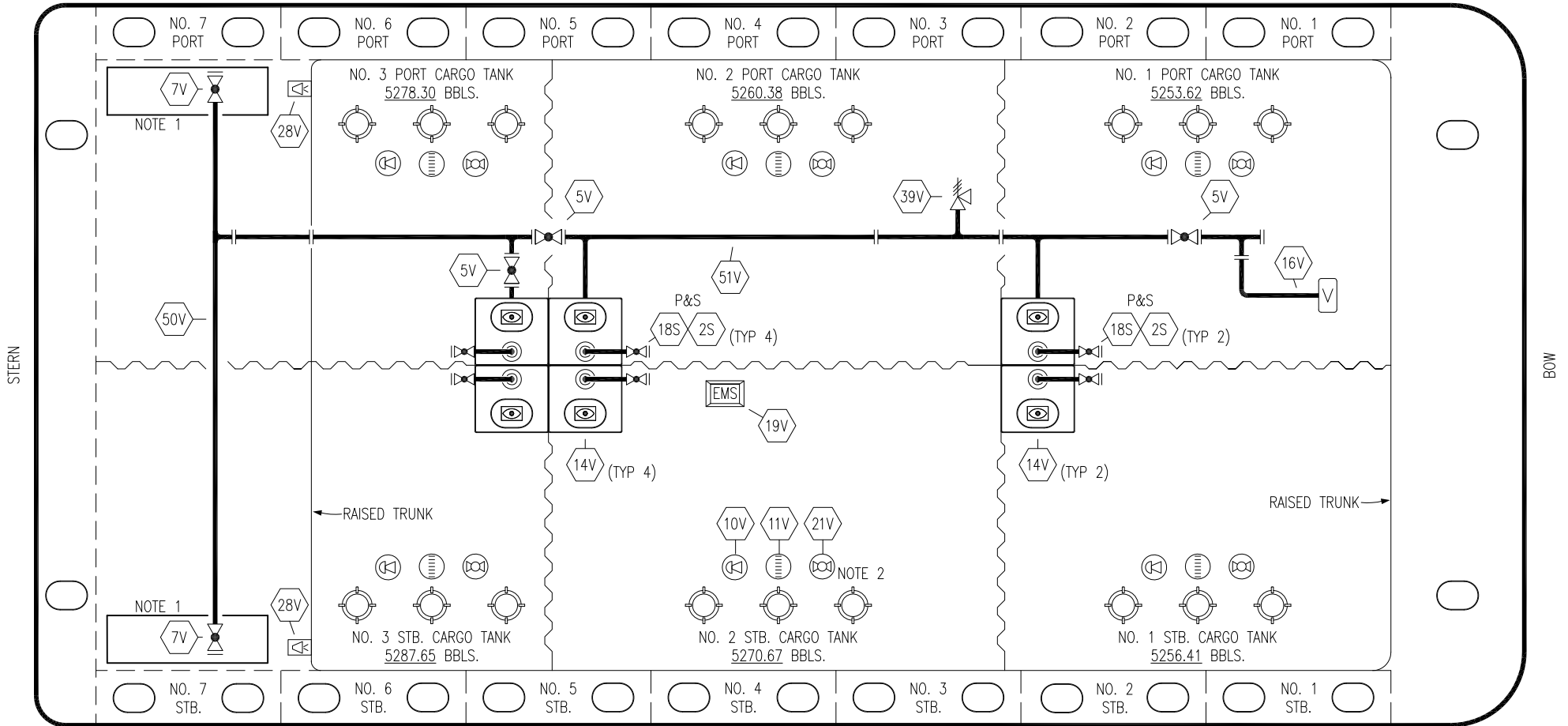
CARGO
PIPING FLOW DIAGRAM

KIRBY 31005B

SCALE: NONE
PAGE: 1 OF 2

REV. **1**

PORT




STARBOARD

- | | | | |
|-----|---------------------------|----------|----------------------------|
| NO | DESCRIPTION | NO | DESCRIPTION |
| 5V | BLOCK VALVE | 19V | EMERGENCY ENGINE SHUT DOWN |
| 7V | HEADER VALVE | 21V | HERMETIC GAUGE |
| 8V | VENT STACK VALVE | 28V | DOCK CONNECTION ALARM |
| 10V | HIGH LEVEL/OVERFILL ALARM | 50V | VAPOR HEADER |
| 11V | 1-METER GAUGE STICK | 51V | VAPOR PIPELINE |
| 14V | SIGHT GLASS | 2S | CARGO SUMP SUCTION VALVE |
| 16V | VAPOR VENT STACK | 18S | STRIPPING DROP |
| | | — | ABOVE DECK PIPING |

NOTE 2: TYPICAL RIGGING IN EACH TANK
 NOTE 1: CONTAINMENT P/S

TRINITY EX: CTCO 356B

| REV. | DATE | BY | CHK | APP | REVISION DESCRIPTION |
|------|----------|-----|-----|-----|----------------------|
| 1 | 06/10/20 | MRV | DDA | TL | REVISED BARGE NAME |
| 0 | 02/20/19 | MRV | DDA | | ISSUED FOR APPROVAL |



KIRBY INLAND MARINE

VAPOR PIPING FLOW DIAGRAM

KIRBY 31005B

| | |
|--------------|--------|
| SCALE: NONE | REV. 1 |
| PAGE: 2 OF 2 | |