

NO	DESCRIPTION	NO	DESCRIPTION
1C	CARGO TANK VALVE	20C	DUMMY HEADER PIPING
2C	LOAD VALVE	21C	DUMMY HEADER VALVE
3C	MASTER SUCTION VALVE	30C	CARGO PIPELINE
4C	DISCHARGE VALVE	31C	BYPASS VALVE
5C	HEADER VALVE	37C	CARGO DROP
8C	RELIEF VALVE	43S	STERN HEADER VALVE
9C	CHECK VALVE	—	— ABOVE DECK PIPING
13C	CARGO PIPING BLOCK VALVE	- - -	BELOW DECK PIPING
19C	CARGO HEADER		

NOTE 1: CONTAINMENT P/S

REV.	DATE	BY	CHK	APP	REVISION DESCRIPTION
1	03/19/20	MRV	DDA		REVISED PER CLIENT COMMENTS
0	02/20/19	MRV	DDA		ISSUED FOR APPROVAL

TRINITY

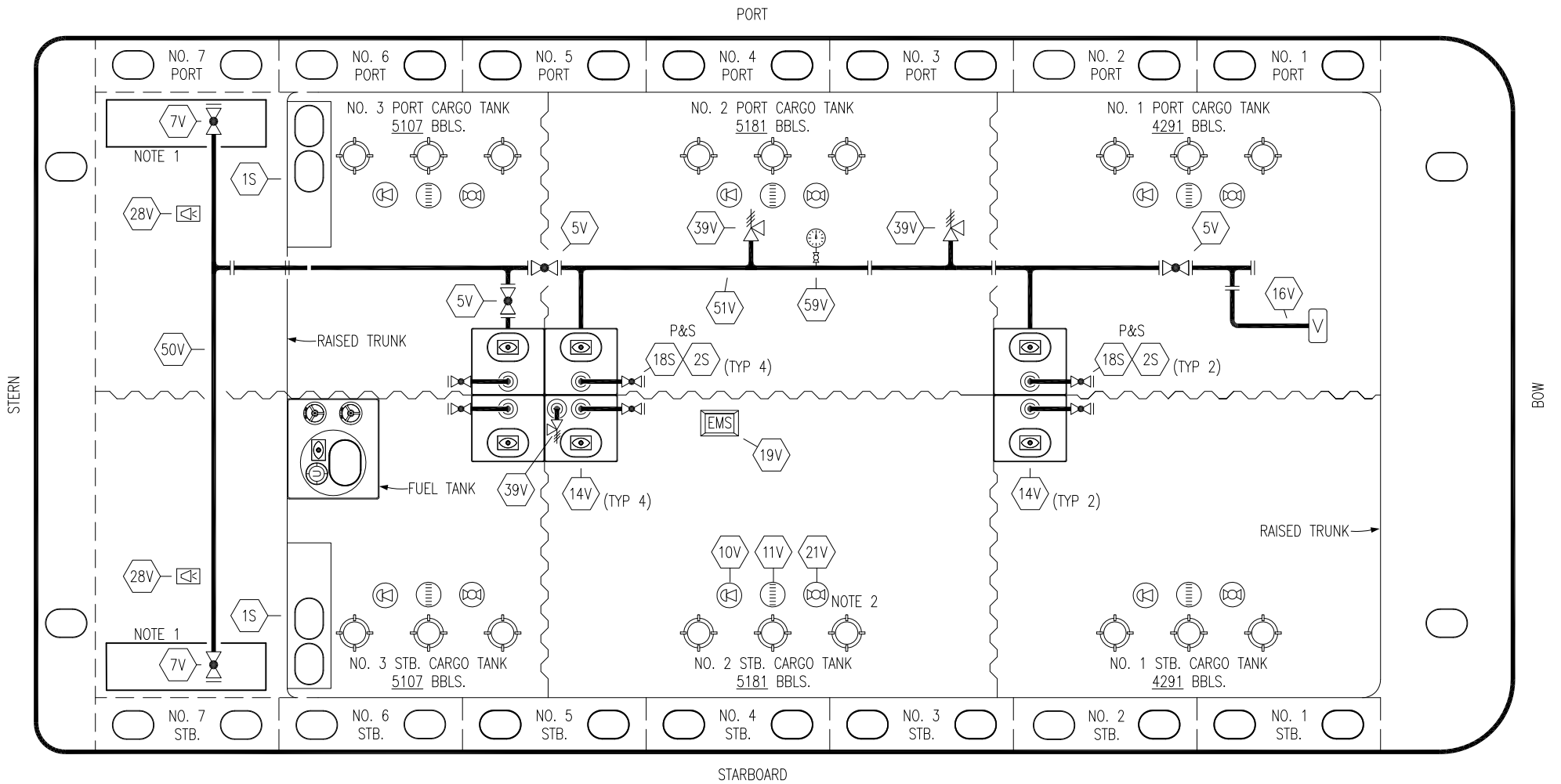
KIRBY INLAND MARINE

CARGO

PIPING FLOW DIAGRAM

KIRBY 31004B

SCALE: NONE	REV. 1
PAGE: 1 OF 2	



NO	DESCRIPTION	NO	DESCRIPTION
5V	BLOCK VALVE	39V	P/V RELIEF VALVE
7V	HEADER VALVE	50V	VAPOR HEADER
8V	VENT STACK VALVE	51V	VAPOR PIPELINE
10V	HIGH LEVEL/OVERFILL ALARM	59V	PRESS/VAC GAUGE
11V	1-METER GAUGE STICK	1S	SLOP TANK
14V	SIGHT GLASS	2S	CARGO SUMP SUCTION VALVE
16V	VAPOR VENT STACK	18S	STRIPPING DROP
19V	EMERGENCY ENGINE SHUT DOWN	—	ABOVE DECK PIPING
21V	HERMETIC GAUGE		
28V	DOCK CONNECTION ALARM		

NOTE 2: TYPICAL RIGGING IN EACH TANK

NOTE 1: CONTAINMENT P/S

REV.	DATE	BY	CHK	APP	REVISION DESCRIPTION
1	03/19/20	MRV	DDA		REVISED PER CLIENT COMMENTS
0	02/20/19	MRV	DDA		ISSUED FOR APPROVAL

TRINITY

KIRBY INLAND MARINE

**VAPOR
PIPING FLOW DIAGRAM**

SCALE: NONE	KIRBY 31004B
PAGE: 2 OF 2	REV. 1