


NO	DESCRIPTION	NO	DESCRIPTION
1C	CARGO TANK VALVE	19C	CARGO HEADER
2C	LOAD VALVE	20C	DUMMY HEADER PIPING
3C	MASTER SUCTION VALVE	21C	DUMMY HEADER VALVE
4C	DISCHARGE VALVE	30C	CARGO PIPELINE
5C	HEADER VALVE	37C	CARGO DROP
8C	RELIEF VALVE	43S	STERN HEADER VALVE
9C	CHECK VALVE	—	— ABOVE DECK PIPING
13C	CARGO PIPING BLOCK VALVE	---	--- BELOW DECK PIPING

NOTE 1: CONTAINMENT P/S

TRINITY — EX: CTCO 354B

REV.	DATE	BY	CHK	APP	REVISION DESCRIPTION
1	04/02/20	MRV	DDA		REVISED BARGE NAME
0	02/18/19	MRV	DDA		ISSUED FOR APPROVAL



KIRBY INLAND MARINE

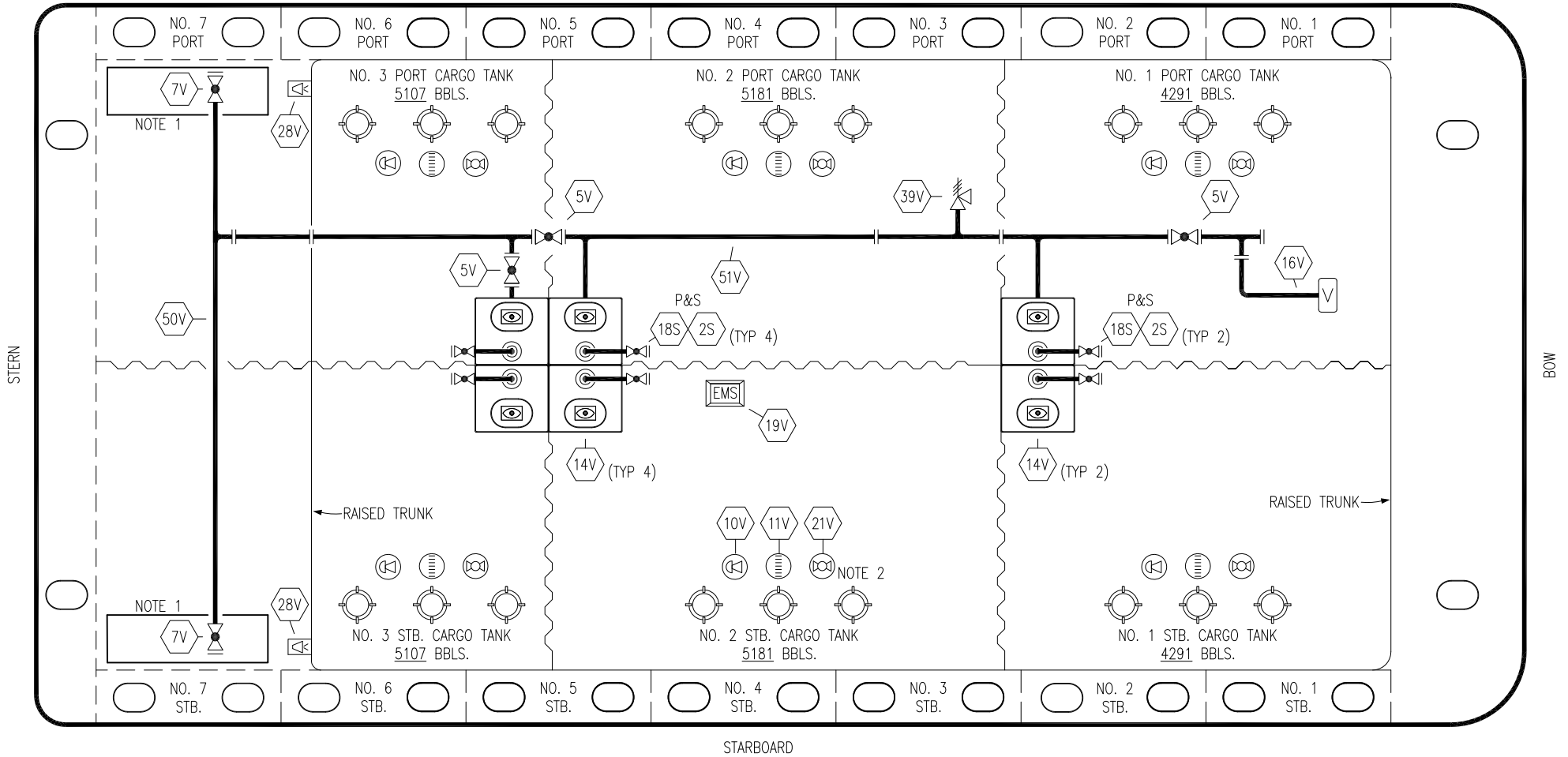
CARGO

PIPING FLOW DIAGRAM

KIRBY 31003B

SCALE: NONE	REV. 1
PAGE: 1 OF 2	

PORT



STARBOARD

- | | | | |
|-----|---------------------------|----------|----------------------------|
| NO | DESCRIPTION | NO | DESCRIPTION |
| 5V | BLOCK VALVE | 19V | EMERGENCY ENGINE SHUT DOWN |
| 7V | HEADER VALVE | 21V | HERMETIC GAUGE |
| 8V | VENT STACK VALVE | 28V | DOCK CONNECTION ALARM |
| 10V | HIGH LEVEL/OVERFILL ALARM | 50V | VAPOR HEADER |
| 11V | 1-METER GAUGE STICK | 51V | VAPOR PIPELINE |
| 14V | SIGHT GLASS | 2S | CARGO SUMP SUCTION VALVE |
| 16V | VAPOR VENT STACK | 18S | STRIPPING DROP |
| | | — | ABOVE DECK PIPING |

NOTE 2: TYPICAL RIGGING IN EACH TANK

NOTE 1: CONTAINMENT P/S

TRINITY -- EX: CTCO 354B

1	04/02/20	MRV	DDA	REVISED BARGE NAME
0	02/18/19	MRV	DDA	ISSUED FOR APPROVAL
REV.	DATE	BY	CHK	APP
				REVISION DESCRIPTION

KIRBY INLAND MARINE 

**VAPOR
PIPING FLOW DIAGRAM**

SCALE: NONE
PAGE: 2 OF 2

KIRBY 31003B REV. **1**