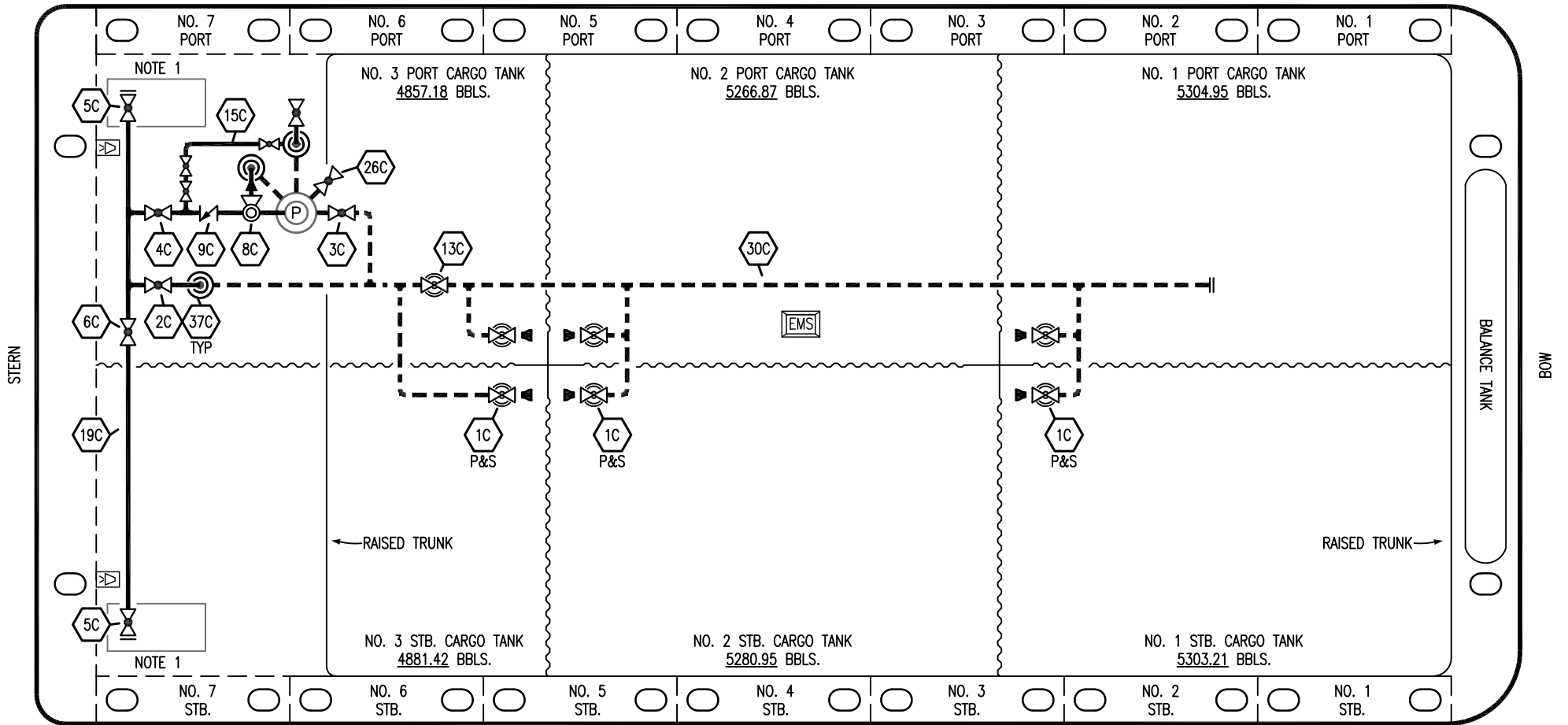


PORT



STERN

BOW

BALANCE TANK

STARBOARD

NO	DESCRIPTION	NO	DESCRIPTION
1C	CARGO TANK VALVE	13C	CARGO PIPING BLOCK VALVE
2C	LOAD VALVE	15C	BYPASS VALVE AROUND CHECK
3C	MASTER SUCTION VALVE	19C	CARGO HEADER
4C	DISCHARGE VALVE	26C	PUMP DRAIN VALVE
5C	HEADER VALVE	30C	CARGO PIPELINE
6C	SALVAGE VALVE	37C	CARGO DROP
8C	RELIEF VALVE	—	—
9C	CHECK VALVE	—	—
		—	—
		—	—

NOTE 1: CONTAINMENT P/S

TRINITY MARINE -- EX: N/A

REV.	DATE	BY	CHK	APP	REVISION DESCRIPTION
3	03/16/23	MRV	DDA	DL	REVISED PER CLIENT COMMENTS
2	08/29/14	DDA	DDA	OF	REVISED PER CLIENT COMMENTS
1	03/13/12	JN	DDA		GENERAL REVISION
0	04/19/10	DB	RB	OF	APPROVED

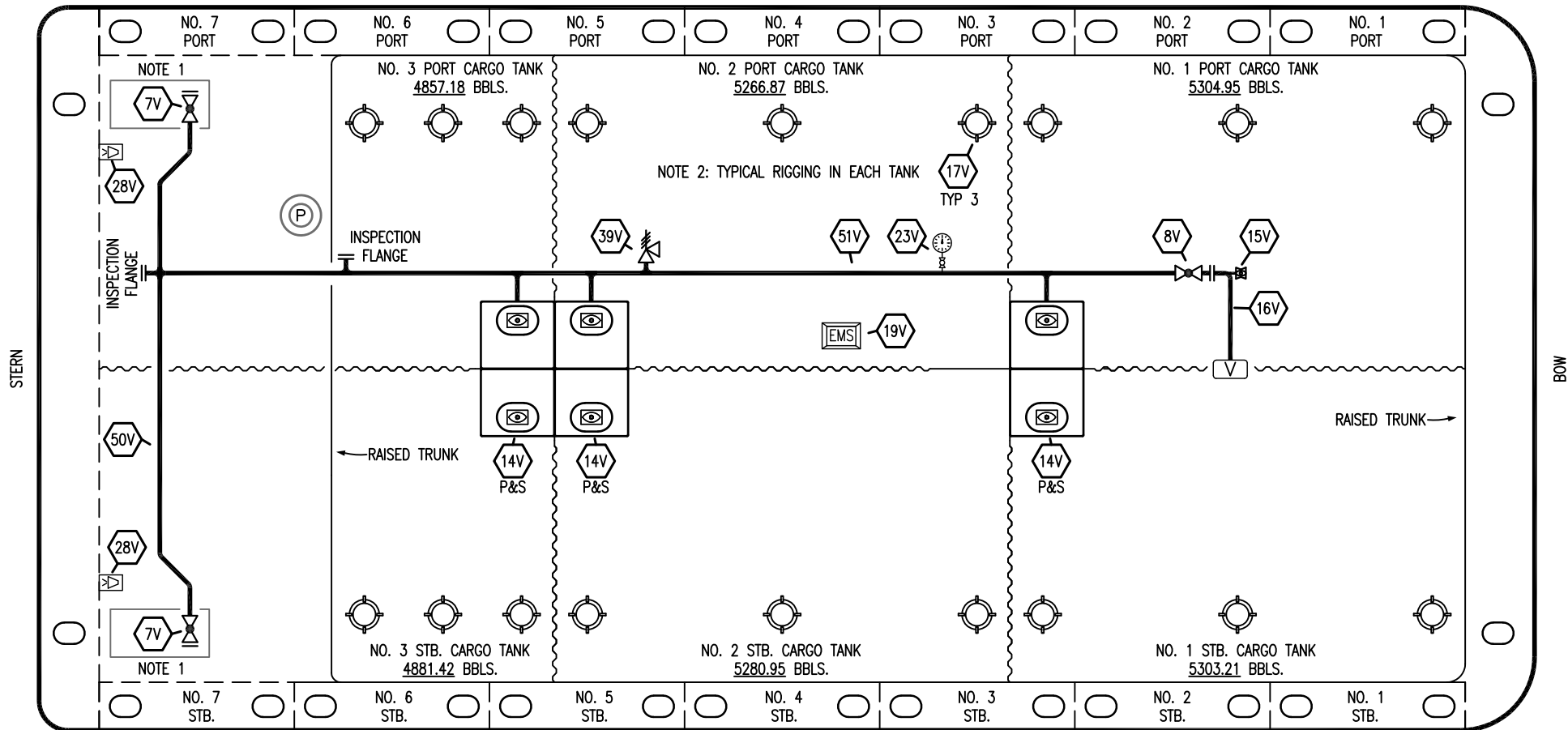
KIRBY INLAND MARINE 

**CARGO
PIPING FLOW DIAGRAM**

SCALE: NONE
PAGE: 1 OF 4

KIRBY 30724B REV. **3**

PORT



STERN

BOW

STARBOARD

NO	DESCRIPTION	NO	DESCRIPTION
7V	8" HEADER VALVE	28V	DOCK CONNECTION ALARM
8V	8" VENT STACK VALVE	38V	8" VAPOR DROP
14V	8" SIGHT GLASS W/ GAUGE TREE	39V	PRESSURE/VACUUM VALVE
15V	2" INSPECTION PORT	50V	8" VAPOR HEADER
15V	2 1/2" INSPECTION PLUG	51V	8" VAPOR PIPELINE
16V	8" VAPOR VENT STACK	—	ABOVE DECK PIPING
17V	BUTTERWORTH		
19V	EMERGENCY ENGINE SHUT DOWN		
23V	PRESSURE GAUGE		

NOTE 1: CONTAINMENT P/S

NOTE 2: TYPICAL RIGGING IN EACH TANK

TRINITY MARINE – EX: N/A

REV.	DATE	BY	CHK	APP	REVISION DESCRIPTION
2	03/16/23	MRV	DDA	DL	REVISED PER CLIENT COMMENTS
1	08/29/14	DDA	DDA	OF	REVISED PER CLIENT COMMENTS
0	04/19/10	DB	RB	OF	APPROVED

KIRBY INLAND MARINE 

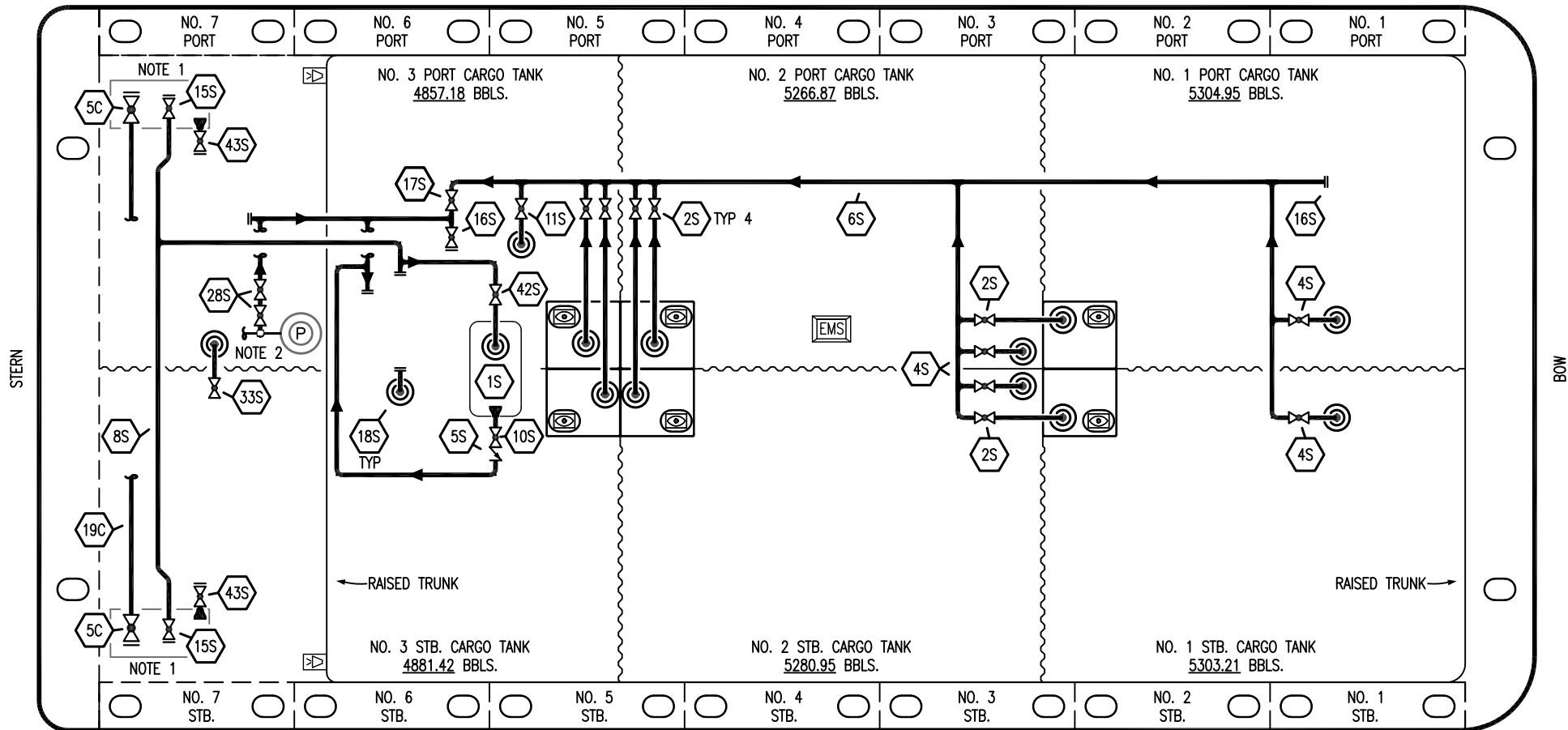
**VAPOR
PIPING FLOW DIAGRAM**

SCALE: NONE
PAGE: 2 OF 4

KIRBY 30724B

REV. **2**

PORT



NO DESCRIPTION

- 1S SLOP TANK (3000 GAL.)
- 2S CARGO SUMP SUCTION VALVE
- 4S CARGO TANK SUCTION VALVE
- 5C CARGO HEADER VALVE
- 5S SLOP TANK SUCTION VALVE
- 6S SUCTION HEADER PIPING
- 8S DISCHARGE HEADER PIPING
- 10S SLOP TANK CHECK VALVE
- 11S LOWER CARGO PIPELINE SUCTION VALVE
- 15S HEADER DISCHARGE VALVE

NO DESCRIPTION

- 16S REMOTE SUCTION CONNECTION
- 17S FORWARD CARGO TANK ISOLATION
- 18S STRIPPING DROP
- 19C CARGO HEADER
- 28S CARGO PIPING SUCTION
- 33S PUMP WELL SUCTION VALVE
- 42S SLOP TANK FILL VALVE
- 43S DRIP PAN SUCTION VALVE

— ABOVE DECK PIPING

STARBOARD

NOTE 1: CONTAINMENT P/S

NOTE 2: CONNECTS TO PUMP DISCHARGE PIPING

TRINITY MARINE – EX: N/A

REV.	DATE	BY	CHK	APP	REVISION DESCRIPTION
1	03/16/23	MRV	DDA	DL	REVISED PER CLIENT COMMENTS
0	4/19/10	DB	RB	OF	APPROVED

KIRBY INLAND MARINE 

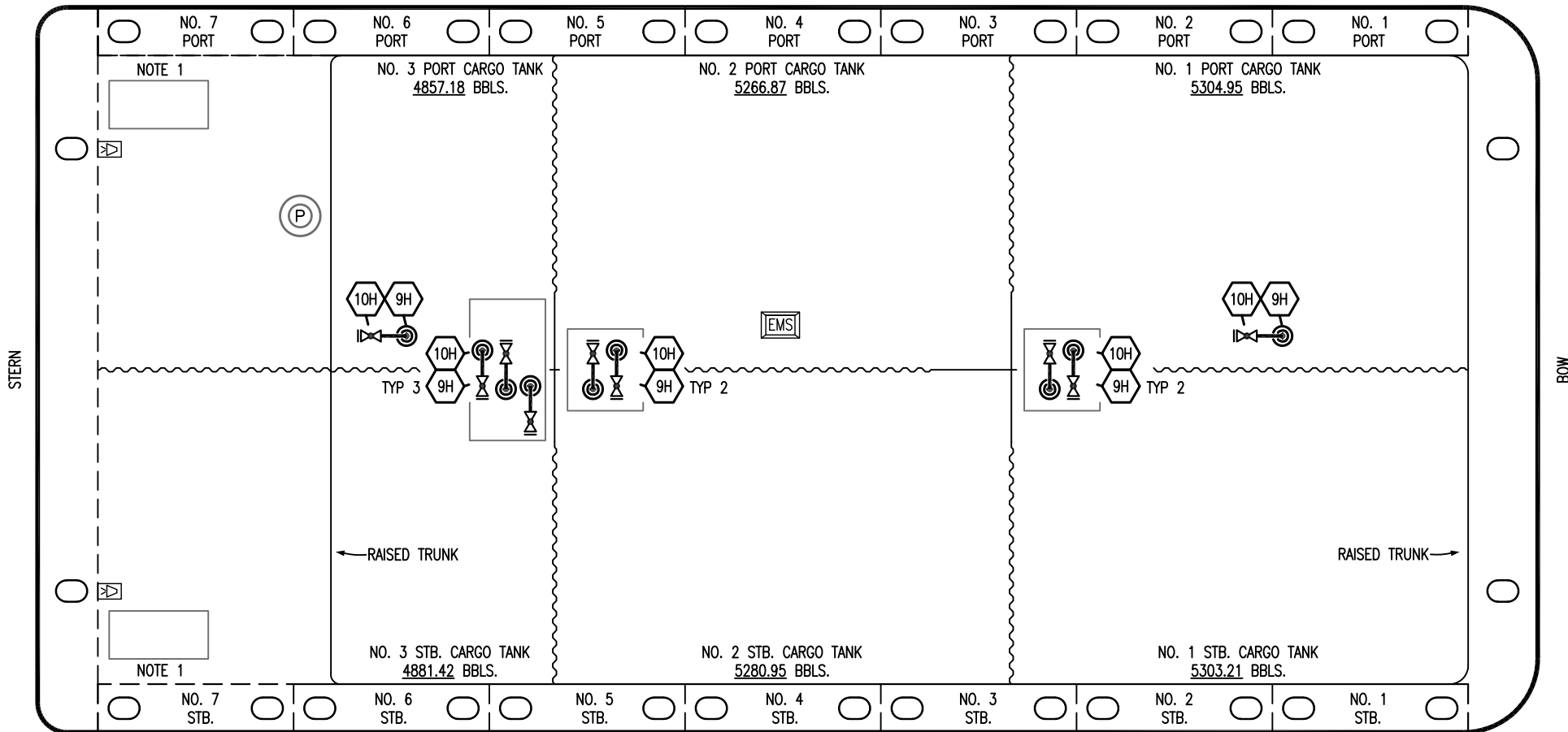
**STRIPPING
PIPING FLOW DIAGRAM**

SCALE: NONE
PAGE: 3 OF 4

KIRBY 30724B

REV. **1**

PORT



STERN

BOW

STARBOARD

- | | |
|----|----------------------|
| NO | DESCRIPTION |
| | STEAM (HEATING) DROP |
| | SUPPLY VALVE |
| | ABOVE DECK PIPING |

NOTE 1: CONTAINMENT P/S

TRINITY MARINE – EX: N/A

						KIRBY INLAND MARINE	
1	03/16/23	MRV	DDA	DL	REVISED PER CLIENT COMMENTS	SCALE: NONE	
0	4/19/10	DB	RB	OF	APPROVED	PAGE: 4 OF 4	
REV.	DATE	BY	CHK	APP	REVISION DESCRIPTION	KIRBY 30724B	
						REV. 1	