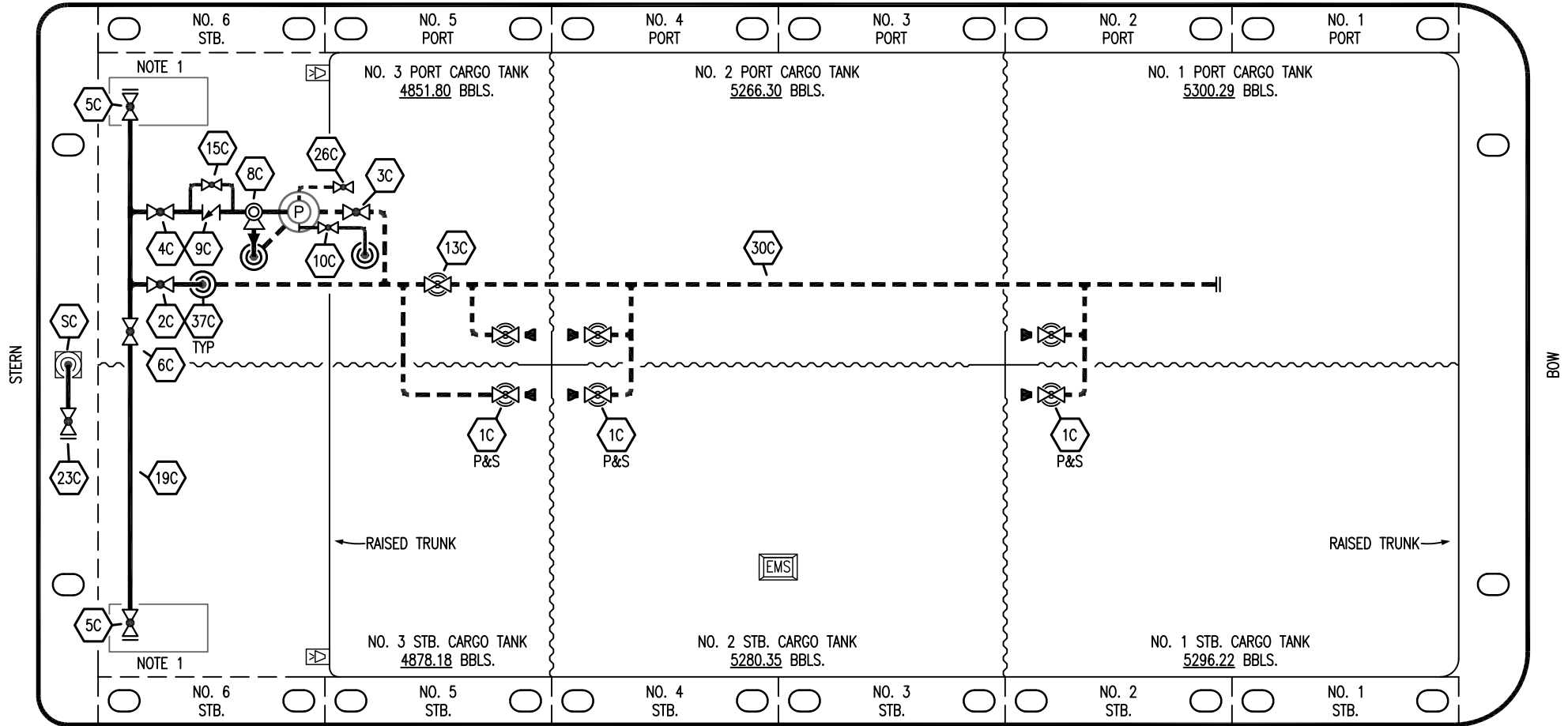


PORT



STERN

BOW

STARBOARD

NO	DESCRIPTION	NO	DESCRIPTION
1C	CARGO TANK VALVE	13C	CARGO PIPING BLOCK VALVE
2C	LOAD VALVE	15C	BYPASS VALVE AROUND CHECK
3C	MASTER SUCTION VALVE	19C	CARGO HEADER
4C	DISCHARGE VALVE	23C	SEA CHEST BLOCK VALVE
5C	HEADER VALVE	26C	PUMP DRAIN VALVE
6C	SALVAGE VALVE	30C	CARGO PIPELINE
8C	RELIEF VALVE	37C	CARGO DROP
9C	CHECK VALVE	SC	SEA CHEST
10C	BURP VALVE	—	— ABOVE DECK PIPING
		- - -	BELOW DECK PIPING

NOTE 1: CONTAINMENT P/S

TRINITY MARINE - EX: N/A

REV.	DATE	BY	CHK	APP	REVISION DESCRIPTION
4	03/07/23	MRV	DDA	TFB	REVISED PER CLIENT COMMENTS
3	05/31/18	WFB	DDA		REVISED BURP LINE
2	6/18/13	DCB	DDA		ADDED SEA CHEST
1	3/13/12	JN	DDA		GENERAL REVISION
0	4/19/10	DB	RB	OF	APPROVED

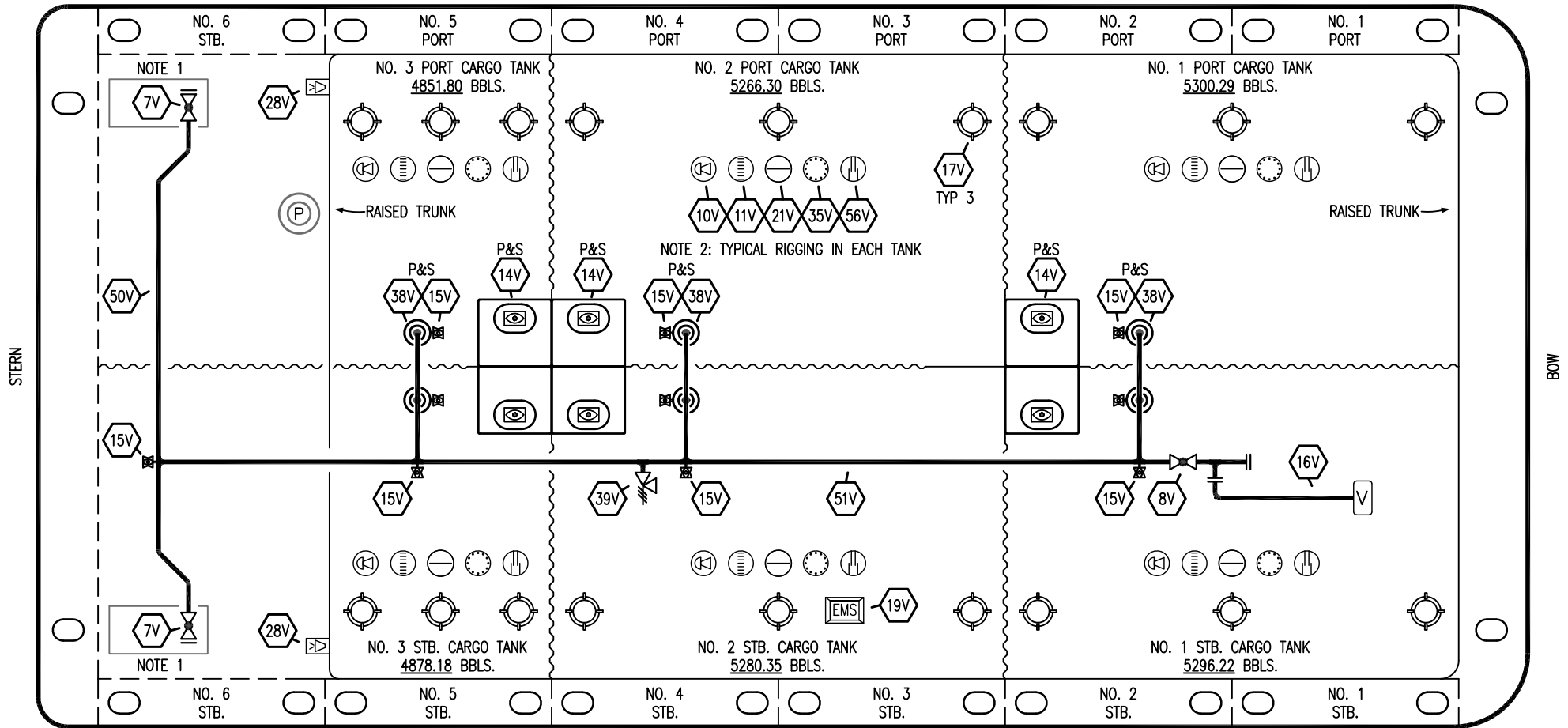
KIRBY INLAND MARINE

**CARGO
PIPING FLOW DIAGRAM**

SCALE: NONE
PAGE: 1 OF 4

KIRBY 30723B REV. **4**

PORT



STERN

BOW

STARBOARD

- | | | | |
|-----|------------------------------|-----|-----------------------|
| NO | DESCRIPTION | NO | DESCRIPTION |
| 7V | 8" HEADER VALVE | 28V | DOCK CONNECTION ALARM |
| 8V | 8" VENT STACK VALVE | 35V | SPARE (NOZZLE) |
| 10V | HIGH LEVEL/OVERFILL ALARM | 38V | 8" VAPOR DROP |
| 11V | METER STICK | 39V | PRESSURE/VACUUM VALVE |
| 14V | 8" SIGHT GLASS W/ GAUGE TREE | 50V | 8" VAPOR HEADER |
| 15V | 2" INSPECTION PORT | 51V | 8" VAPOR PIPELINE |
| 16V | 8" VAPOR VENT STACK | 56V | GAUGE TUBE |
| 17V | BUTTERWORTH | | ABOVE DECK PIPING |
| 19V | EMERGENCY ENGINE SHUT DOWN | | |
| 21V | HERMETIC GAUGE | | |

NOTE 1: CONTAINMENT P/S

NOTE 2: TYPICAL RIGGING IN EACH TANK

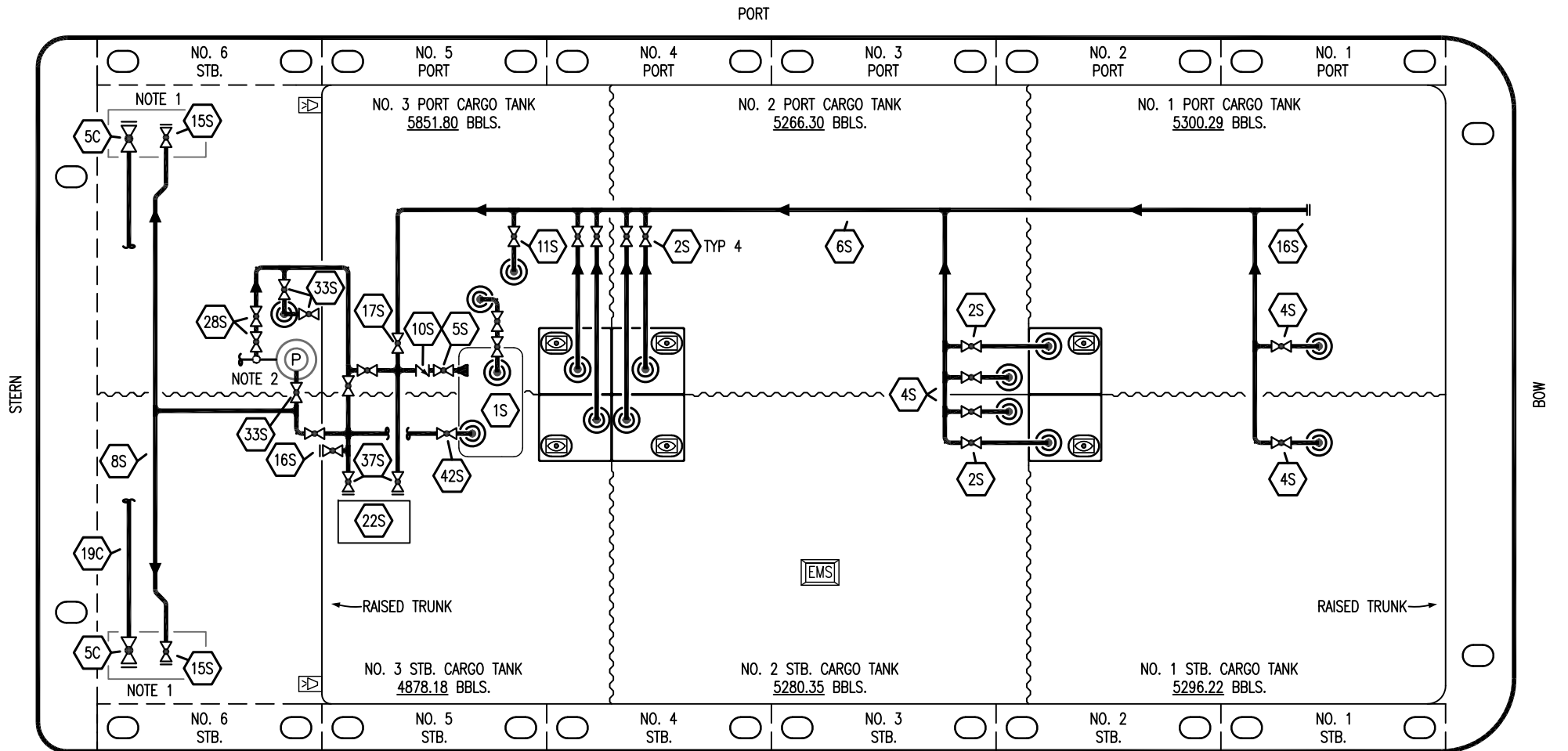
TRINITY MARINE -- EX: N/A

1	03/07/23	MRV	DDA	TFB	REVISED PER CLIENT COMMENTS
0	4/19/10	DB	RB	OF	APPROVED
REV.	DATE	BY	CHK	APP	REVISION DESCRIPTION

KIRBY INLAND MARINE

**VAPOR
PIPING FLOW DIAGRAM**

SCALE: NONE
KIRBY 30723B REV. 1
 PAGE: 2 OF 4



- | NO | DESCRIPTION | NO | DESCRIPTION |
|-----|------------------------------------|-----|---|
| 1S | SLOP TANK (3000 GAL.) | 16S | REMOTE SUCTION CONNECTION |
| 2S | CARGO SUMP SUCTION VALVE | 17S | FORWARD CARGO TANK ISOLATION |
| 4S | CARGO TANK SUCTION VALVE | 18S | STRIPPING DROP |
| 5C | CARGO HEADER VALVE | 19C | CARGO HEADER |
| 5S | SLOP TANK SUCTION VALVE | 22S | PUMP SPACER FOR 2" AIR PUMP (NOT INSTALLED) |
| 6S | SUCTION HEADER PIPING | 28S | CARGO PIPING SUCTION |
| 8S | DISCHARGE HEADER PIPING | 33S | PUMP WELL SUCTION VALVE |
| 10S | SLOP TANK CHECK VALVE | 36S | STRIPPING PUMP DISCHARGE VALVE |
| 11S | LOWER CARGO PIPELINE SUCTION VALVE | 37S | BLOCK VALVE |
| 12S | RETURN TO CARGO TANK VALVE | 42S | SLOP TANK FILL VALVE |
| 13S | RETURN TO CARGO CHECK VALVE | — | ABOVE DECK PIPING |
| 15S | HEADER DISCHARGE VALVE | | |

NOTE 1: CONTAINMENT P/S
 NOTE 2: CONNECTS TO PUMP DISCHARGE PIPING

TRINITY MARINE -- EX: N/A

REV.	DATE	BY	CHK	APP	REVISION DESCRIPTION
1	03/07/23	MRV	DDA	TFB	REVISED PER CLIENT COMMENTS
0	4/19/10	DB	RB	OF	APPROVED

KIRBY INLAND MARINE

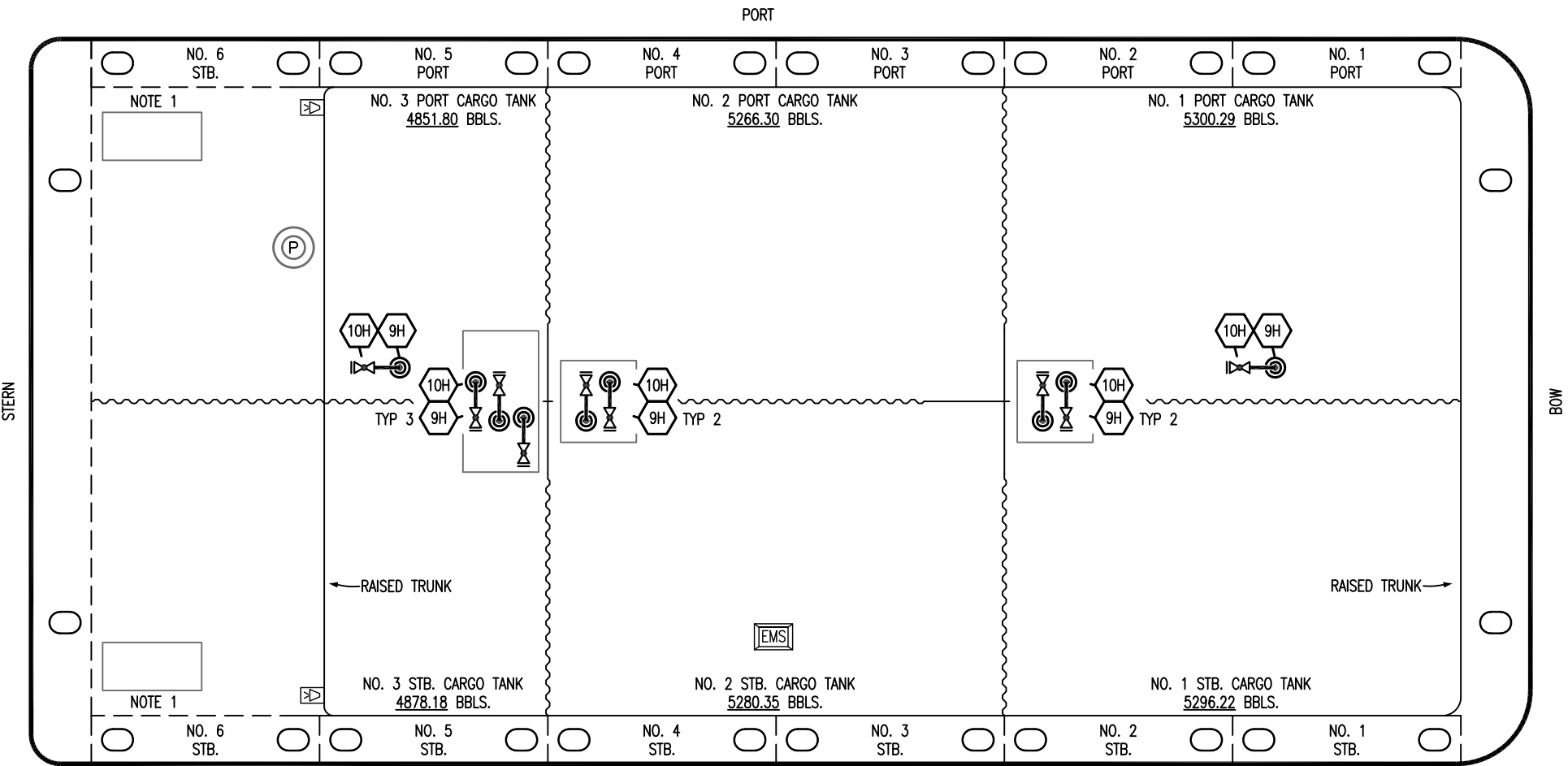


**STRIPPING
 PIPING FLOW DIAGRAM**

SCALE: NONE
 PAGE: 3 OF 4

KIRBY 30723B

REV.
1



- NO DESCRIPTION
- 9H STEAM (HEATING) DROP
- 10H SUPPLY VALVE
- ABOVE DECK PIPING

NOTE 1: CONTAINMENT P/S

TRINITY MARINE – EX: N/A

						KIRBY INLAND MARINE	
						STEAM	
						PIPING FLOW DIAGRAM	
1	03/07/23	MRV	DDA	TFB	REVISED PER CLIENT COMMENTS		
0	4/19/10	DB	RB	OF	APPROVED		
REV.	DATE	BY	CHK	APP	REVISION DESCRIPTION	SCALE: NONE	KIRBY 30723B
						PAGE: 4 OF 4	
						REV. 1	