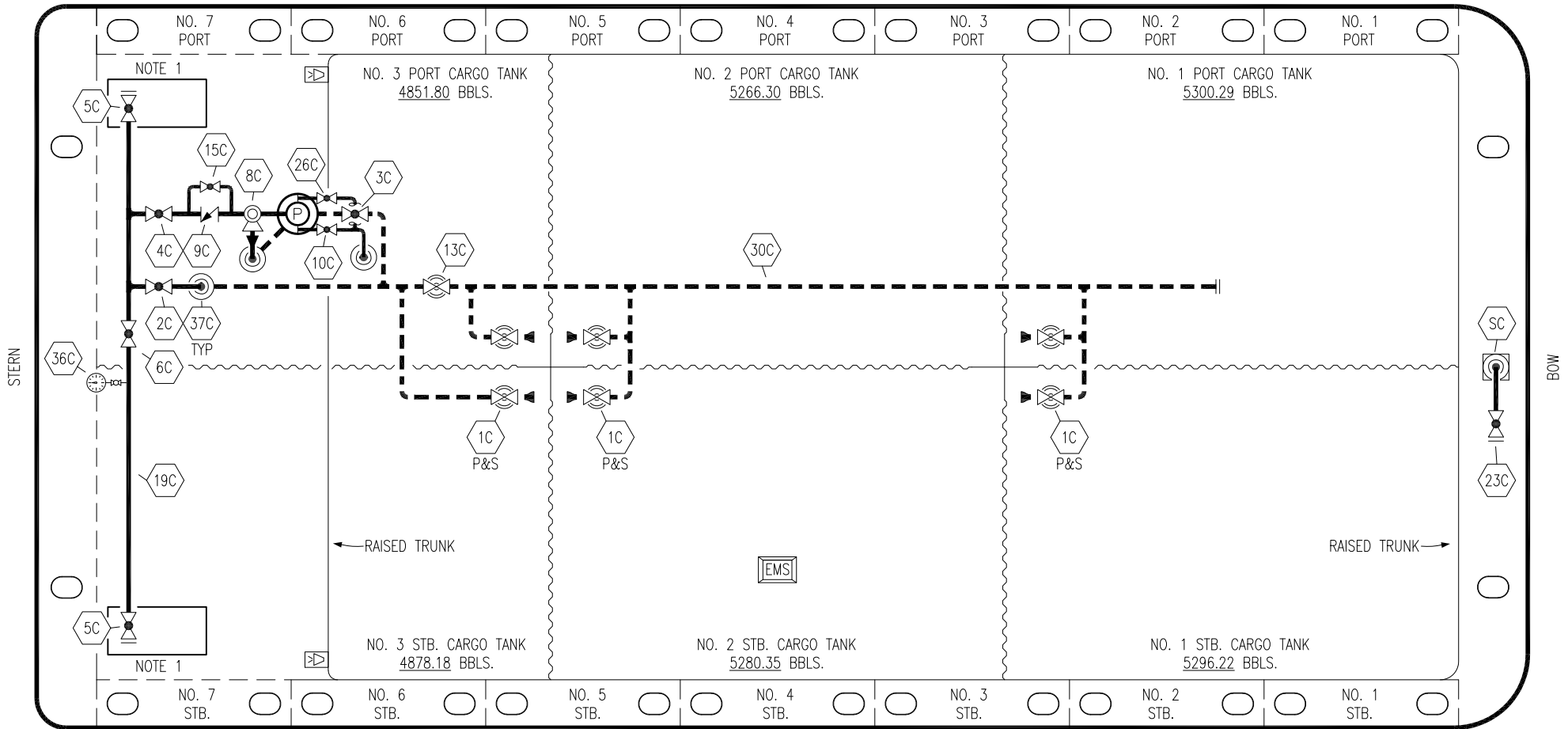


PORT



STERN

BOW


STARBOARD

NO	DESCRIPTION	NO	DESCRIPTION
1C	CARGO TANK VALVE	13C	CARGO PIPING BLOCK VALVE
2C	LOAD VALVE	15C	BYPASS VALVE AROUND CHECK
3C	MASTER SUCTION VALVE	19C	CARGO HEADER
4C	DISCHARGE VALVE	23C	SEA CHEST BLOCK VALVE
5C	HEADER VALVE	26C	DEEP WELL DRAIN VALVE
6C	SALVAGE VALVE	30C	CARGO PIPELINE
8C	RELIEF VALVE	36C	PRESSURE GAUGE
9C	CHECK VALVE	37C	CARGO DROP
10C	BURP VALVE	SC	SEA CHEST
	ABOVE DECK PIPING		
	BELOW DECK PIPING		

NOTE 1: CONTAINMENT P/S

TRINITY MARINE -- EX: N/A

REV.	DATE	BY	CHK	APP	REVISION DESCRIPTION
4	04/22/22	MRV	DDA	JF	REVISED PER CLIENT COMMENTS
3	05/31/18	WFB	DDA		REVISED BURP LINE
2	6/18/13	DCB	DDA		ADDED SEA CHEST
1	3/13/12	JN	DDA		GENERAL REVISION
0	4/19/10	DB	RB	OF	APPROVED



KIRBY INLAND MARINE

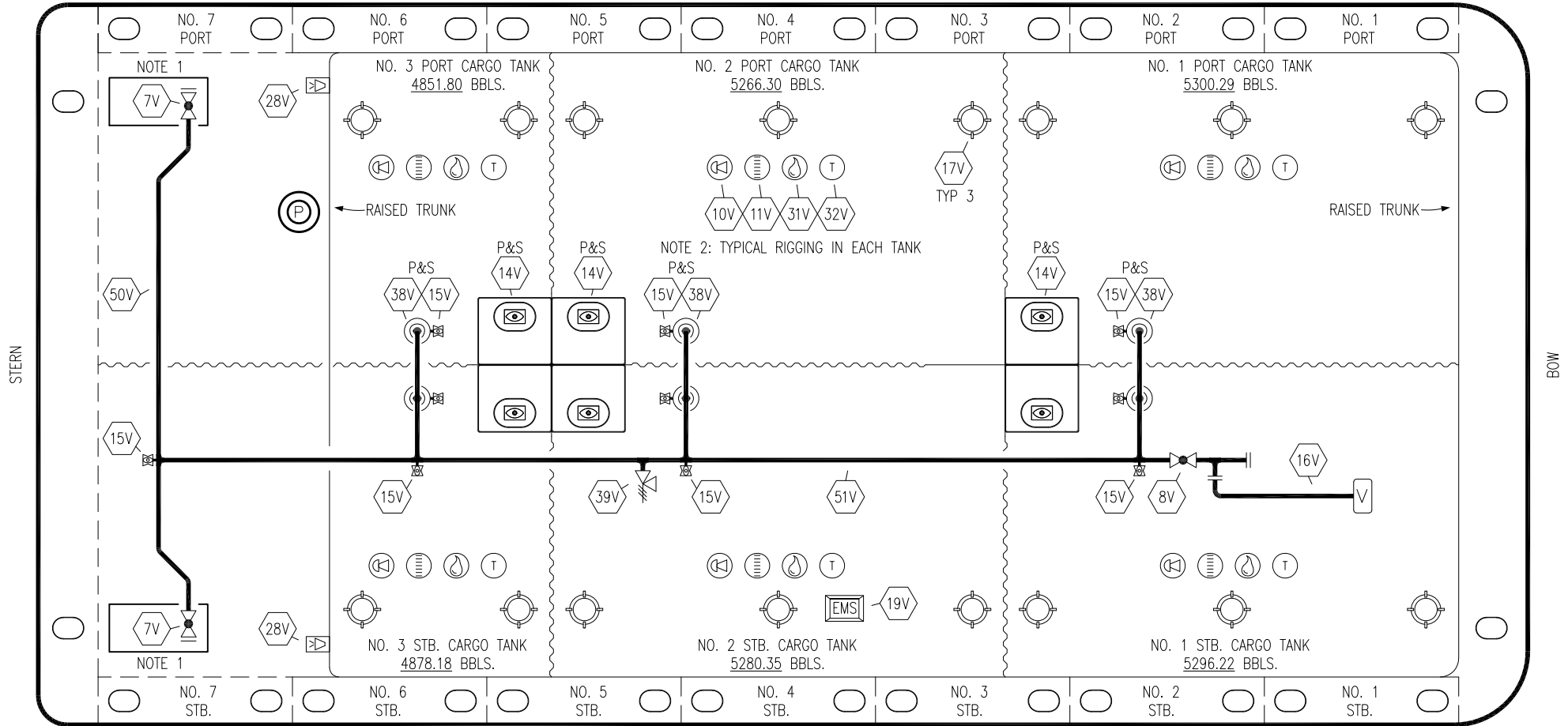
CARGO

PIPING FLOW DIAGRAM

KIRBY 30722B

SCALE: NONE	REV. 4
PAGE: 1 OF 4	

PORT



- | | | | |
|-----|------------------------------|-----|-----------------------|
| NO | DESCRIPTION | NO | DESCRIPTION |
| 7V | 8" HEADER VALVE | 28V | DOCK CONNECTION ALARM |
| 8V | 8" VENT STACK VALVE | 31V | SAMPLE |
| 10V | HIGH LEVEL/OVERFILL ALARM | 38V | 8" VAPOR DROP |
| 11V | METER STICK | 39V | PRESSURE/VACUUM VALVE |
| 14V | 8" SIGHT GLASS W/ GAUGE TREE | 50V | 8" VAPOR HEADER |
| 15V | 2" INSPECTION PORT | 51V | 8" VAPOR PIPELINE |
| 16V | 8" VAPOR VENT STACK | — | ABOVE DECK PIPING |
| 17V | BUTTERWORTH | | |
| 19V | EMERGENCY ENGINE SHUT DOWN | | |

NOTE 1: CONTAINMENT P/S
 NOTE 2: TYPICAL RIGGING IN EACH TANK

TRINITY MARINE -- EX: N/A

REV.	DATE	BY	CHK	APP	REVISION DESCRIPTION
1	04/22/22	MRV	DDA	JF	REVISED PER CLIENT COMMENTS
0	4/19/10	DB	RB	OF	APPROVED

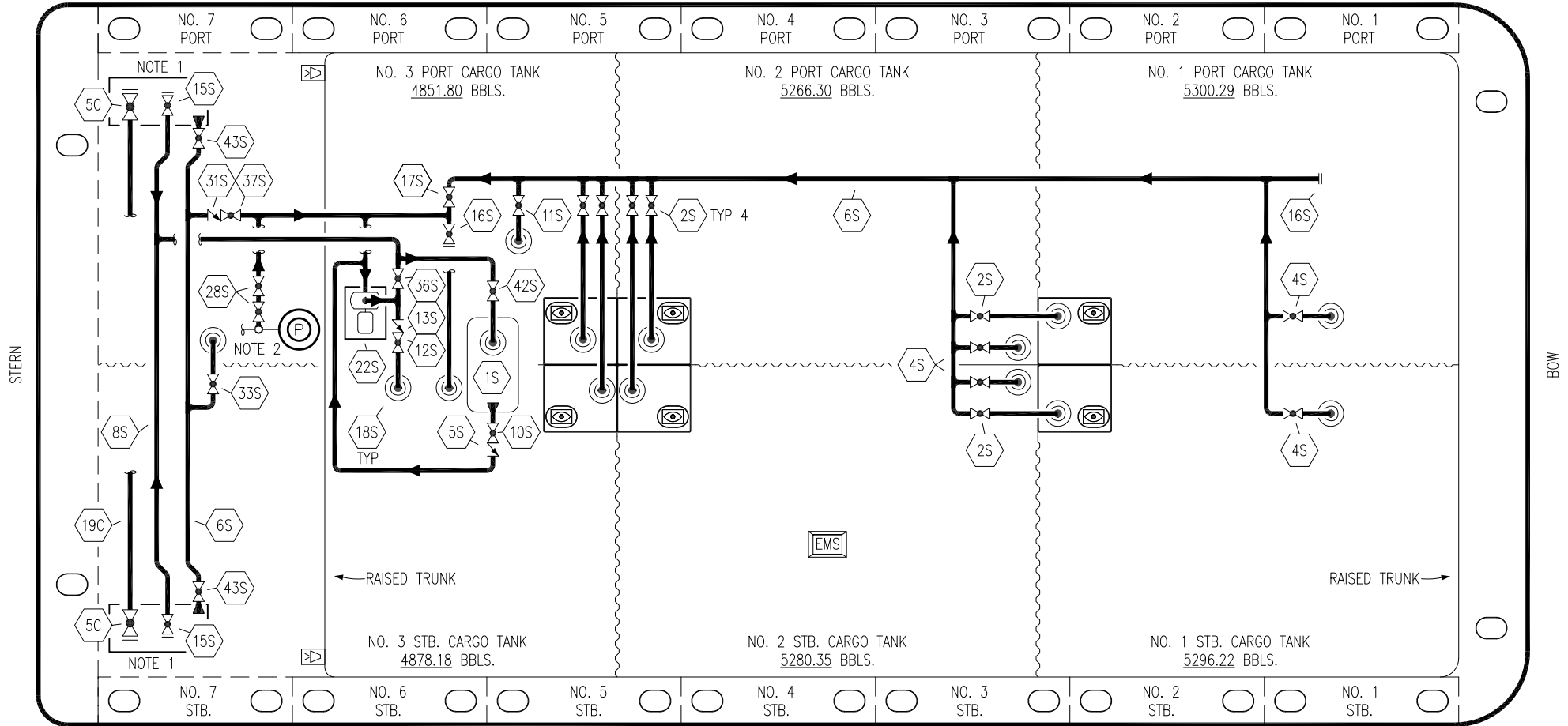
KIRBY INLAND MARINE

**VAPOR
PIPING FLOW DIAGRAM**

KIRBY 30722B

SCALE: NONE	REV. 1
PAGE: 2 OF 4	

PORT



NO	DESCRIPTION	NO	DESCRIPTION
1S	SLOP TANK (3000 GAL.)	16S	REMOTE SUCTION CONNECTION
2S	CARGO SUMP SUCTION VALVE	17S	FORWARD CARGO TANK ISOLATION
4S	CARGO TANK SUCTION VALVE	18S	STRIPPING DROP
5C	CARGO HEADER VALVE	19C	CARGO HEADER
5S	SLOP TANK SUCTION VALVE	22S	STRIPPING PUMP
6S	SUCTION HEADER PIPING	28S	CARGO PIPING SUCTION
8S	DISCHARGE HEADER PIPING	33S	PUMP WELL SUCTION VALVE
10S	SLOP TANK CHECK VALVE	36S	STRIPPING PUMP DISCHARGE VALVE
11S	LOWER CARGO PIPELINE SUCTION VALVE	37S	BLOCK VALVE
12S	RETURN TO CARGO TANK VALVE	42S	SLOP TANK FILL VALVE
13S	RETURN TO CARGO CHECK VALVE	43S	DRIP PAN SUCTION VALVE
15S	HEADER DISCHARGE VALVE		

— ABOVE DECK PIPING

STARBOARD

NOTE 1: CONTAINMENT P/S

NOTE 2: CONNECTS TO PUMP DISCHARGE PIPING

TRINITY MARINE -- EX: N/A

REV.	DATE	BY	CHK	APP	REVISION DESCRIPTION
1	04/22/22	MRV	DDA	JF	REVISED PER CLIENT COMMENTS
0	4/19/10	DB	RB	OF	APPROVED

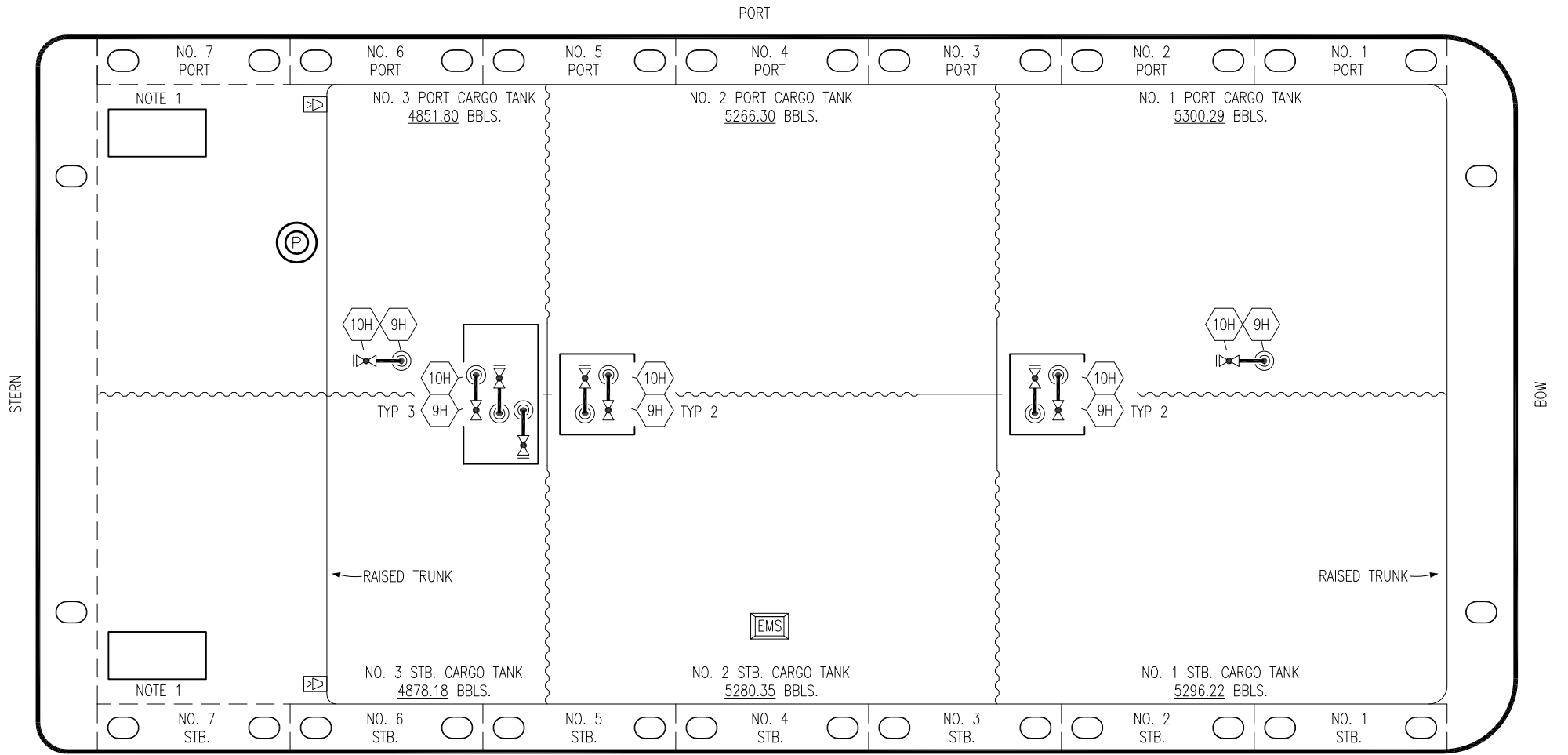
KIRBY INLAND MARINE

**STRIPPING
PIPING FLOW DIAGRAM**

KIRBY 30722B

SCALE: NONE
PAGE: 3 OF 4

REV. **1**




- | | |
|-----|----------------------|
| NO | DESCRIPTION |
| 9H | STEAM (HEATING) DROP |
| 10H | SUPPLY VALVE |
| | ABOVE DECK PIPING |

NOTE 1: CONTAINMENT P/S

TRINITY MARINE -- EX: N/A

1	04/22/22	MRV	DDA	JF	REVISED PER CLIENT COMMENTS
0	4/19/10	DB	RB	OF	APPROVED
REV.	DATE	BY	CHK	APP	REVISION DESCRIPTION

KIRBY INLAND MARINE 	
STEAM PIPING FLOW DIAGRAM	
SCALE: NONE	KIRBY 30722B
PAGE: 4 OF 4	
	REV. 1