

- | | | | |
|----|----------------------|-----|-------------------|
| NO | DESCRIPTION | NO | DESCRIPTION |
| 1C | CARGO TANK VALVE | 13C | BLOCK VALVE |
| 2C | LOAD VALVE | 19C | CARGO HEADER |
| 3C | MASTER SUCTION VALVE | 26C | PUMP DRAIN VALVE |
| 4C | DISCHARGE VALVE | 30C | CARGO PIPELINE |
| 5C | HEADER VALVE | 37C | CARGO DROP |
| 6C | SALVAGE VALVE | ⊙ | ABOVE DECK PIPING |
| 8C | RELIEF VALVE | --- | BELOW DECK PIPING |
| 9C | CHECK VALVE | | |

NOTE 1: CONTAINMENT P/S

REV.	DATE	BY	CHK	APP	REVISION DESCRIPTION
3	02/13/23	MRV	DDA	DL	REVISED PER CLIENT COMMENTS
2	08/29/14	DDA	DDA	OF	REVISED PER CLIENT COMMENTS
1	03/13/12	JN	DDA		GENERAL REVISION
0	04/12/10	RB	RB	OF	APPROVED

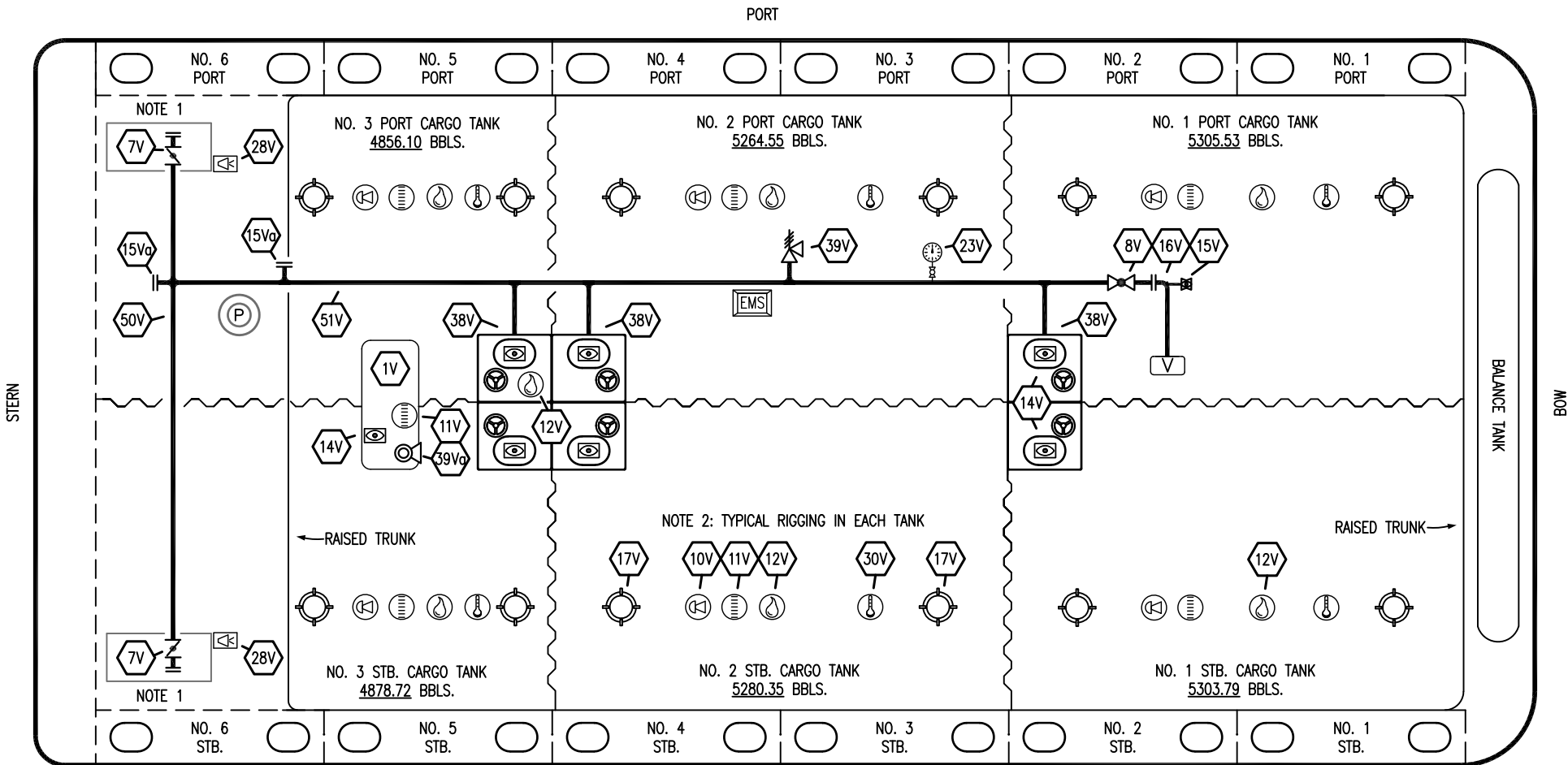
TRINITY

KIRBY INLAND MARINE


CARGO
PIPING FLOW DIAGRAM

KIRBY 30721B

SCALE: NONE	REV. 3
PAGE: 1 OF 4	



NO	DESCRIPTION
1V	3000 GAL. SLOP TANK
7V	8" HEADER VALVE
8V	8" VENT STACK VALVE
10V	8" HIGH LEVEL/OVERFILL ALARM
11V	8" 1-METER STICK GAUGE
12V	2" HERMETIC SAMPLE
14V	8" SIGHT GLASS
15V	2" INSPECTION PORT
15Va	8" INSPECTION FLANGE
16V	8" VAPOR STACK VENT
23V	PRESSURE GAUGE

NO	DESCRIPTION
28V	DOCK CONNECTION ALARM
30V	THERMAL WELL
38V	8" PENETRATION 
39V	6" PRESSURE/VACUUM VALVE
39Va	4" PRESSURE/VACUUM VALVE
50V	8" VAPOR HEADER
51V	8" VAPOR PIPELINE
— ABOVE DECK PIPING	

NOTE 1: CONTAINMENT P/S
 NOTE 2: TYPICAL RIGGING IN EACH TANK

REV.	DATE	BY	CHK	APP	REVISION DESCRIPTION
2	02/13/23	MRV	DDA	DL	REVISED PER CLIENT COMMENTS
1	08/29/14	DDA	DDA	OF	REVISED PER CLIENT COMMENTS
0	04/12/10	RB	RB	OF	APPROVED

KIRBY INLAND MARINE 

**VAPOR
 PIPING FLOW DIAGRAM**

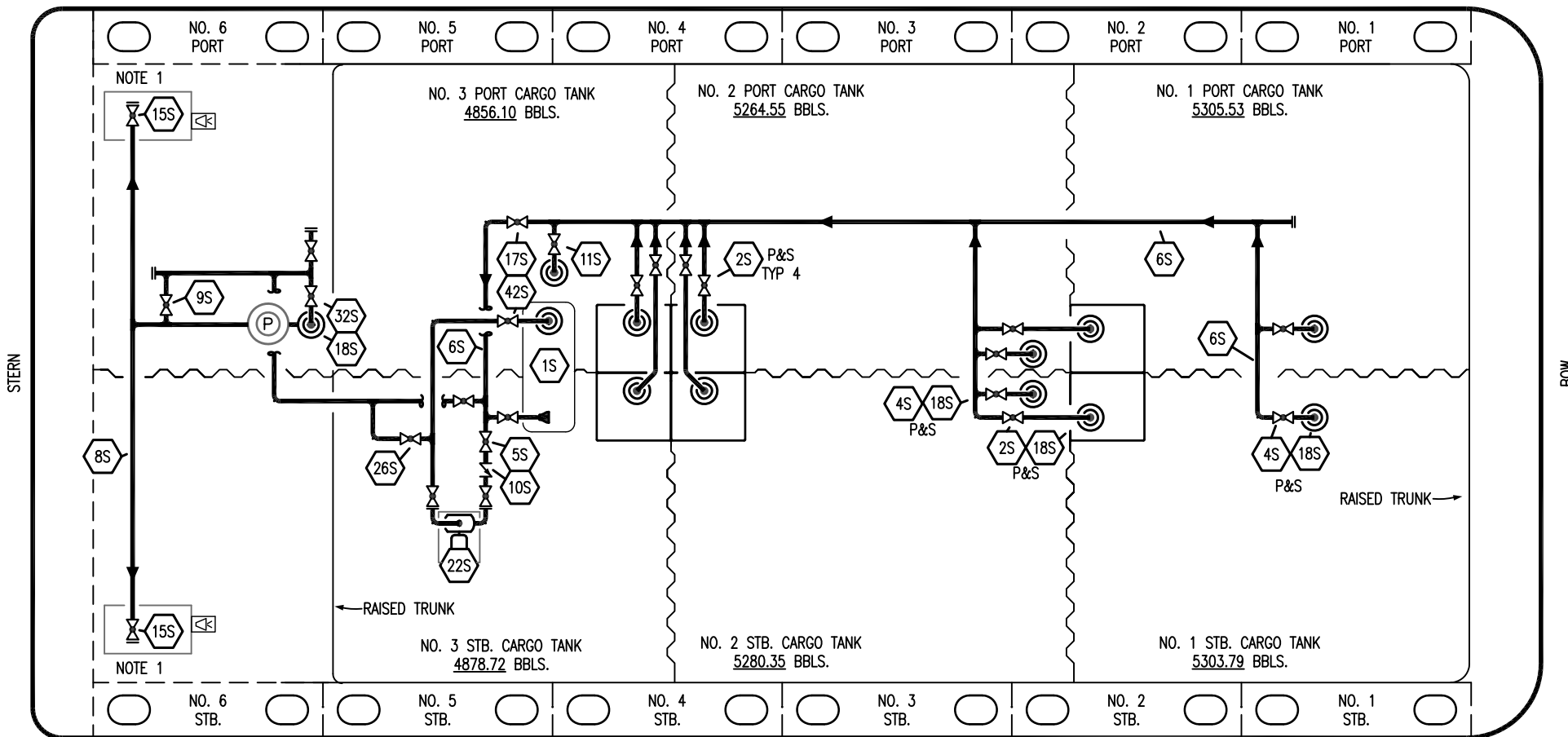
SCALE: NONE
 PAGE: 2 OF 4

KIRBY 30721B

REV. **2**

TRINITY

PORT




NO	DESCRIPTION	NO	DESCRIPTION
1S	3000 GAL. SLOP TANK	17S	FORWARD CARGO TANK ISOLATION
2S	CARGO SUMP SUCTION VALVE	18S	STRIPPING DROP
4S	CARGO TANK SUCTION VALVE	22S	STRIPPING PUMP
5S	SLOP TANK SUCTION VALVE	26S	BLOCK VALVE
6S	SUCTION HEADER PIPING	28S	CARGO PIPING SUCTION
8S	DISCHARGE HEADER PIPING	31S	CHECK VALVE
9S	BYPASS VALVE	32S	PUMP WELL PRIMER VALVE
10S	SLOP TANK CHECK VALVE	36S	STRIPPING PUMP DISCHARGE VLV.
11S	LOWER CARGO PIPELINE SUCTION VLV.	42S	SLOP TANK FILL VALVE
12S	RETURN TO CARGO TANK VALVE	43S	DRIP PAN SUCTION VALVE
13S	RETURN TO CARGO CHECK VALVE		ABOVE DECK PIPING
15S	HEADER DISCHARGE VALVE		

STARBOARD

- NOTE 1: CONTAINMENT P/S
- NOTE 2: CONNECTS TO P/V PIPING.
- NOTE 3: CONNECTS TO PUMP DISCHARGE PIPING.

REV.	DATE	BY	CHK	APP	REVISION DESCRIPTION
2	02/13/23	MRV	DDA	DL	REVISED PER CLIENT COMMENTS
1	08/29/14	DDA	DDA	OF	REVISED PER CLIENT COMMENTS
0	04/12/10	RB	RB	OF	APPROVED

TRINITY

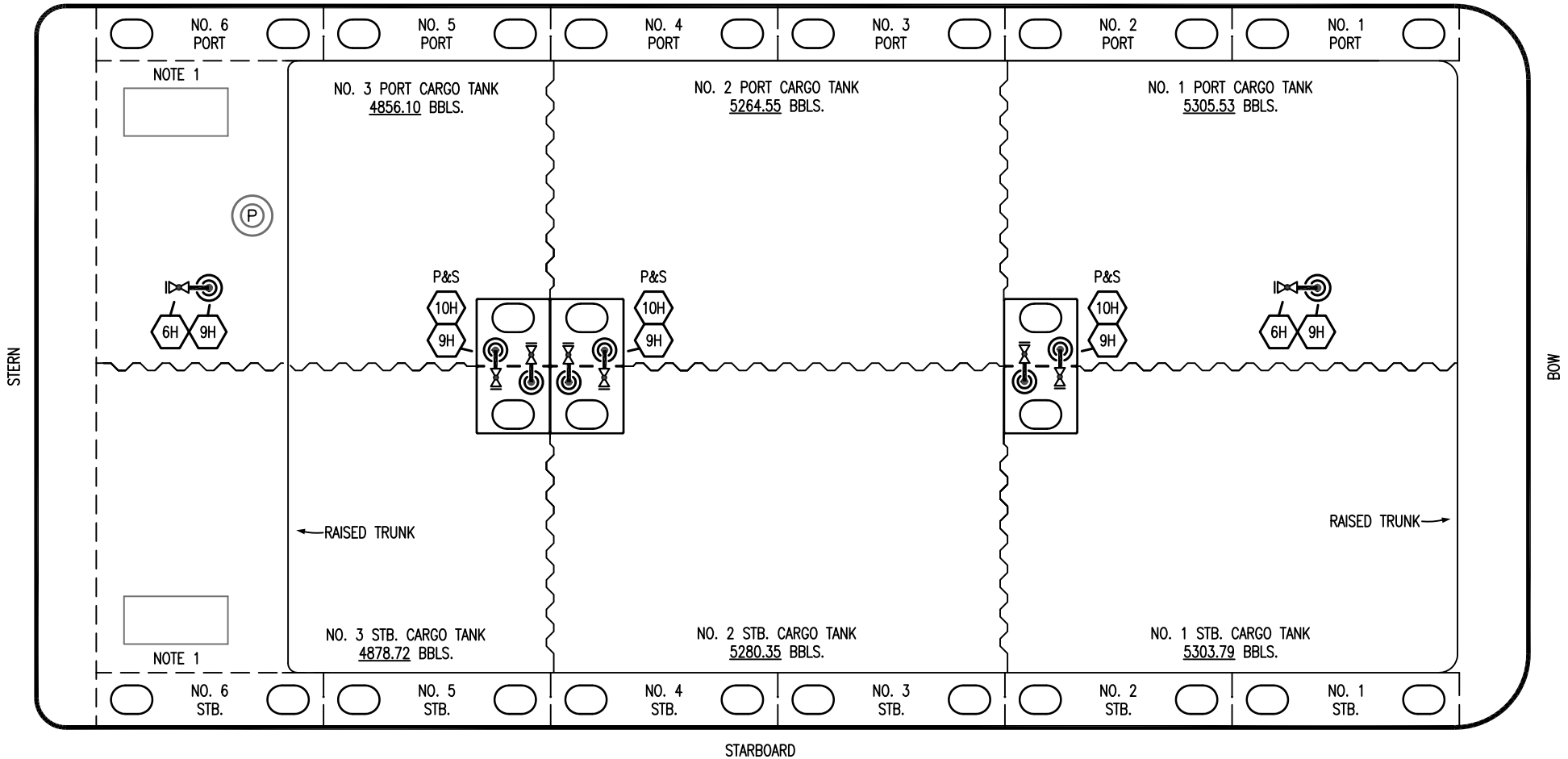


KIRBY INLAND MARINE

STRIPPING PIPING FLOW DIAGRAM

SCALE: NONE	KIRBY 30721B	REV. 2
PAGE: 3 OF 4		

PORT



STERN

BOW


STARBOARD

- NO DESCRIPTION
- 6H HEADER VALVE
- 9H STEAM DROP (P)
- 10H SUPPLY VALVE

NOTE 1: CONTAINMENT P/S

TRINITY

REV.	DATE	BY	CHK	APP	REVISION DESCRIPTION
1	02/13/23	MRV	DDA	DL	REVISED PER CLIENT COMMENTS
0	04/12/10	RB	RB	OF	APPROVED

KIRBY INLAND MARINE		
STEAM PIPING FLOW DIAGRAM		
SCALE: NONE	KIRBY 30721B	
PAGE: 4 OF 4	REV. 1	