

NO	DESCRIPTION	NO	DESCRIPTION
1C	CARGO TANK VALVE	26C	PUMP DRAIN VALVE
2C	LOAD VALVE	30C	CARGO PIPELINE
3C	MASTER SUCTION VALVE	31C	BYPASS VALVE
4C	DISCHARGE VALVE	36C	PRESSURE GAUGE
5C	HEADER VALVE	37C	CARGO DROP
6C	SALVAGE VALVE	38C	HIGH SUCTION VALVE
8C	RELIEF VALVE	—	— ABOVE DECK PIPING
9C	CHECK VALVE	---	--- BELOW DECK PIPING
11C	BLEED OFF VALVE		
19C	CARGO HEADER		

NOTE 1: CONTAINMENT P/S

TRINITY MARINE

REV.	DATE	BY	CHK	APP	REVISION DESCRIPTION
2	02/04/20	MRV	DDA		REVISED PER CLIENT COMMENTS
1	03/13/12	JN	DDA		GENERAL REVISION
0	03/16/09	RB	RB	OF	APPROVED

KIRBY INLAND MARINE

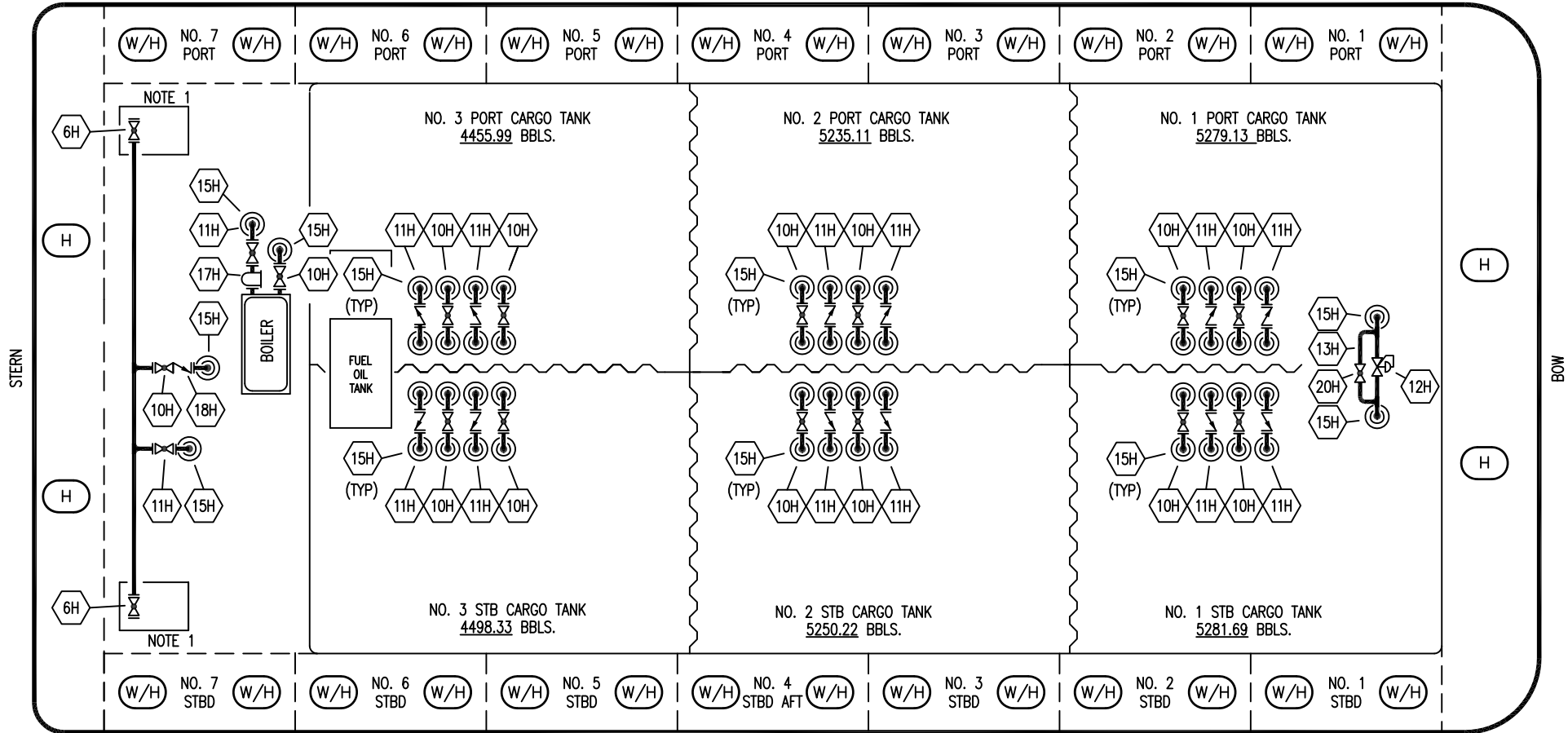
CARGO

PIPING FLOW DIAGRAM

KIRBY 30719B

REV. 2

SCALE: NONE
PAGE: 1 OF 2




- | | |
|----------------------------|--------------------|
| NO | DESCRIPTION |
| 6H | 6" HEADER VALVE |
| 10H | 6" SUPPLY VALVE |
| 11H | 6" RETURN |
| 12H | PRESSURE REGULATOR |
| 13H | BY-PASS |
| 15H | HOT OIL DROP |
| 17H | BASKET STRAINER |
| 18H | CHECK VALVE |
| 20H | BYPASS VALVE |
| — ABOVE DECK PIPING | |

NOTE 1: 6 BARREL DRIP PAN

TRINITY MARINE

1	02/04/20	MRV	DDA		REVISED PER CLIENT COMMENTS
0	03/16/09	RB	AB	AB	APPROVED
REV.	DATE	BY	CHK	APP	REVISION DESCRIPTION



KIRBY INLAND MARINE

HOT OIL

PIPING FLOW DIAGRAM

SCALE: NONE	REV. 1
PAGE: 2 of 2	KIRBY 30719B