


NOTE 1

NOTE 1


NOTE 1: CONTAINMENT P/S

- | NO | DESCRIPTION |
|-----|--|
| 1C | CARGO TANK VALVE |
| 2C | LOAD VALVE |
| 3C | MASTER SUCTION VALVE |
| 4C | DISCHARGE VALVE |
| 5C | HEADER VALVE |
| 9C | CHECK VALVE |
| 13C | CARGO PIPING BLOCK VALVE |
| 30C | CARGO PIPELINE |
| 31C | BYPASS VALVE |
| 37C | CARGO DROP  |

— ABOVE DECK PIPING
 - - - BELOW DECK PIPING

TRINITY MARINE-EX:HW 3039

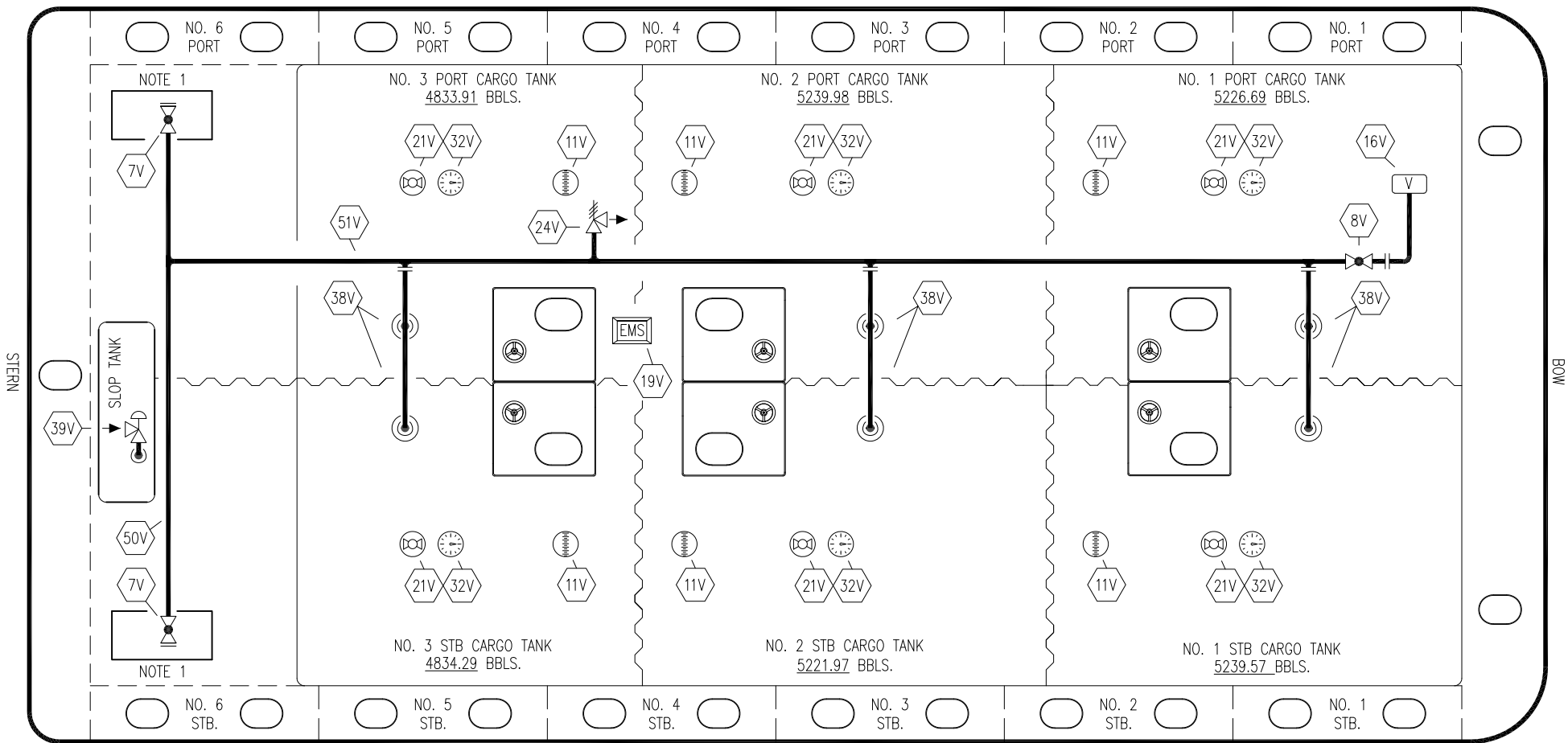
REV.	DATE	BY	CHK	APP	REVISION DESCRIPTION
1	03/22/19	MRV	DDA		REVISED PER CLIENT COMMENTS
0	05/18/09	FP	RB	AB	APPROVED

KIRBY INLAND MARINE 

CARGO

PIPING FLOW DIAGRAM

SCALE: NONE	KIRBY 30403
PAGE: 1 OF 3	REV. 1



NOTE 1: CONTAINMENT P/S

NO	DESCRIPTION	NO	DESCRIPTION
7V	8" HEADER VALVE	32V	TEMPERATURE GAUGE
8V	8" VENT STACK VALVE	38V	8" VAPOR PENETRATION
11V	1 METER STICK GAUGE	39V	PRESSURE/VACUUM RELIEF VALVE
16V	8" VAPOR VENT STACK	50V	8" VAPOR HEADER
19V	EMERGENCY SHUTDOWN SYSTEM	51V	VAPOR PIPELINE
21V	2" HERMETIC GAUGE	—	ABOVE DECK PIPING
24V	P/V VALVE		

TRINITY MARINE-EX:HW 3039

REV.	DATE	BY	CHK	APP	REVISION DESCRIPTION
1	03/22/19	MRV	DDA		REVISED PER CLIENT COMMENTS
0	05/18/09	FP	RB	AB	APPROVED

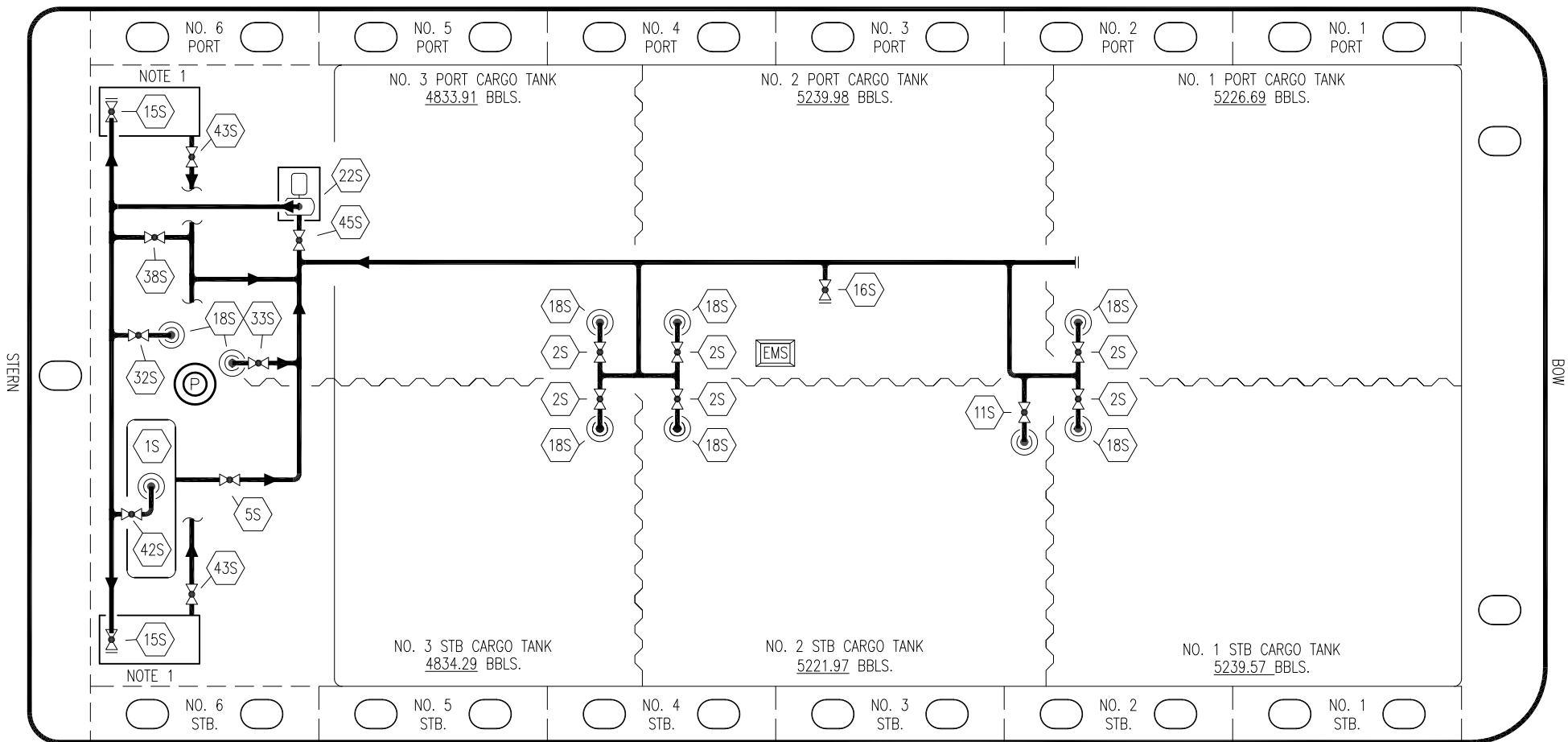
KIRBY INLAND MARINE

**VAPOR
PIPING FLOW DIAGRAM**

KIRBY 30403

SCALE: NONE
PAGE: 2 OF 3

REV. **1**



NOTE 1: CONTAINMENT P/S

NO	DESCRIPTION	NO	DESCRIPTION
1S	SLOP TANK	33S	PUMP WELL SUCTION
2S	CARGO SUMP SUCTION VALVE	34S	PIPELINE LOWER POINT SUCTION
5S	SLOP TANK SUCTION VALVE	38S	CROSSOVER VALVE
11S	LOWER CARGO PIPELINE SUCTION VALVE	42S	SLOP TANK DISCHARGE VALVE
15S	HEADER DISCHARGE VALVE	43S	DRIP PAN SUCTION VALVE
16S	REMOTE SUCTION CONNECTION	45S	STRIPPING PUMP SUCTION VALVE
18S	STRIPPING DROP	—	ABOVE DECK PIPING
22S	STRIPPING PUMP		
32S	PUMP WELL PRIMER VALVE		

TRINITY MARINE-EX:HW 3039

KIRBY INLAND MARINE 

**STRIPPING
PIPING FLOW DIAGRAM**

REV.	DATE	BY	CHK	APP	REVISION DESCRIPTION
1	03/22/19	MRV	DDA		REVISED PER CLIENT COMMENTS
0	05/18/09	FP	RB	AB	APPROVED

SCALE: NONE
PAGE: 3 OF 3

KIRBY 30403 REV. **1**