





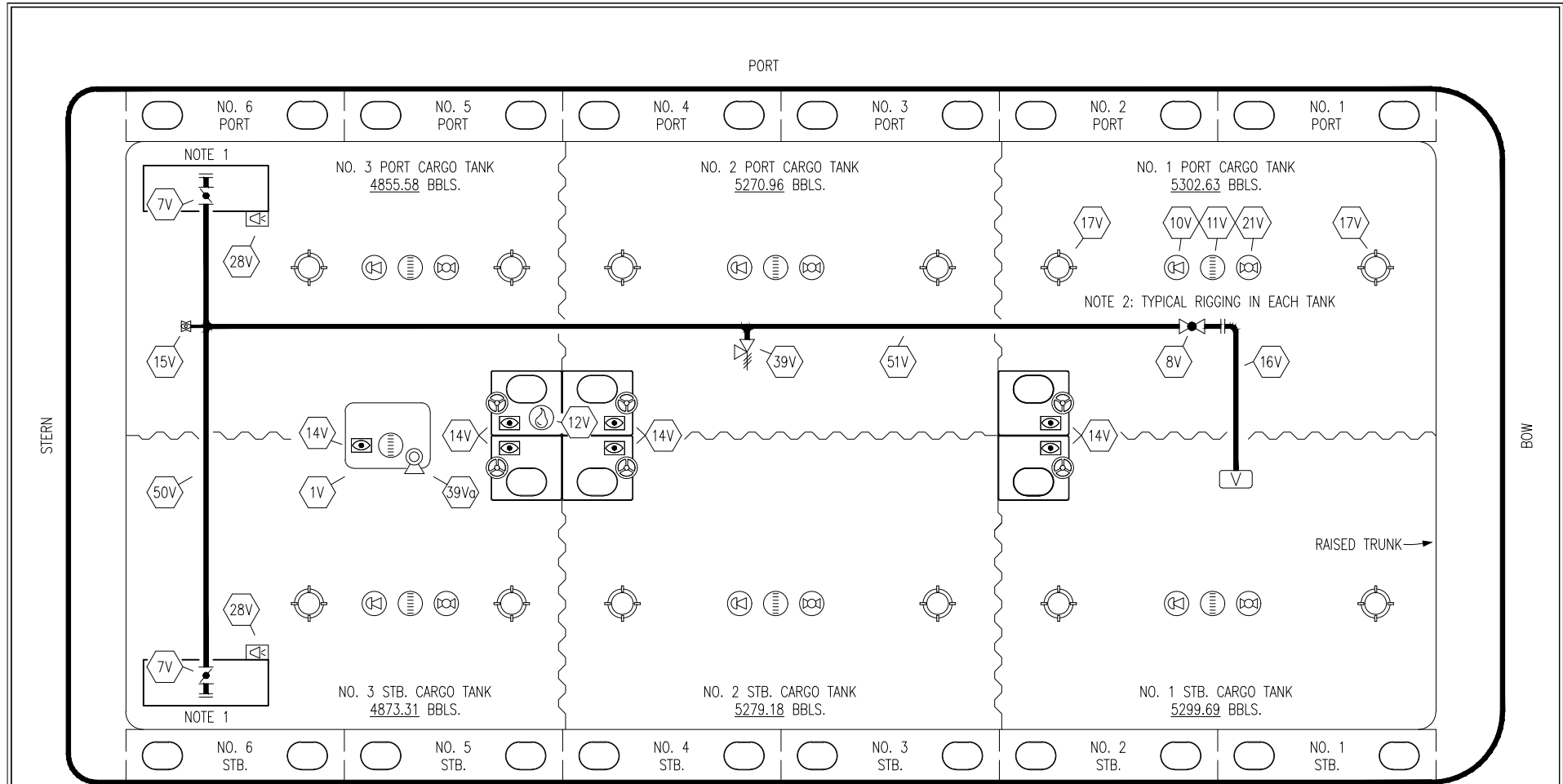
STARBOARD

NO	DESCRIPTION	NO	DESCRIPTION
1C	CARGO TANK VALVE	13C	CARGO PIPING BLOCK VALVE
2C	LOAD VALVE	19C	CARGO HEADER
3C	MASTER SUCTION VALVE	23C	SEA CHEST BLOCK VALVE
4C	DISCHARGE VALVE	30C	CARGO PIPELINE
5C	HEADER VALVE	37C	CARGO DROP 
9C	CHECK VALVE		ABOVE DECK PIPING
			BELOW DECK PIPING

NOTE 1: CONTAINMENT P/S

TRINITY MARINE - EX: N/A

						KIRBY INLAND MARINE 	
						CARGO PIPING DIAGRAM	
2	06/06/22	MRV	DDA	LEP	REVISED PER CLIENT COMMENTS		
1	05/23/17	WFB	DDA		REVISED PER CLIENT COMMENTS		
0	03/01/10	DB	RB	OF	APPROVED		
REV.	DATE	BY	CHK	APP	REVISION DESCRIPTION	SCALE: NONE	
						PAGE: 1 OF 3	
						KIRBY 30341B	
						REV. 2	



- | | |
|-----|------------------------------|
| NO | DESCRIPTION |
| 1V | 3000 GAL. SLOP TANK |
| 7V | 8" HEADER VALVE |
| 8V | 8" VENT STACK VALVE |
| 10V | 8" HIGH LEVEL/OVERFILL ALARM |
| 11V | 8" 1-METER GAUGE STICK |
| 12V | 2" HERMETIC SAMPLE |
| 14V | 8" SIGHT GLASS |
| 15V | 2" INSPECTION PORT |
| 16V | 8" VAPOR VENT STACK |

- | | |
|----------|--------------------------|
| NO | DESCRIPTION |
| 17V | 19" BUTTERWORTH |
| 21V | 2" HERMETIC GAUGE |
| 28V | DOCK CONNECTION ALARM |
| 39V | 6" PRESSURE/VACUUM VALVE |
| 39Vg | 4" PRESSURE/VACUUM VALVE |
| 50V | 8" VAPOR HEADER |
| 51V | 8" VAPOR PIPELINE |
| — | ABOVE DECK PIPING |

STARBOARD

NOTE 1: CONTAINMENT P/S
 NOTE 2: TYPICAL RIGGING IN EACH TANK

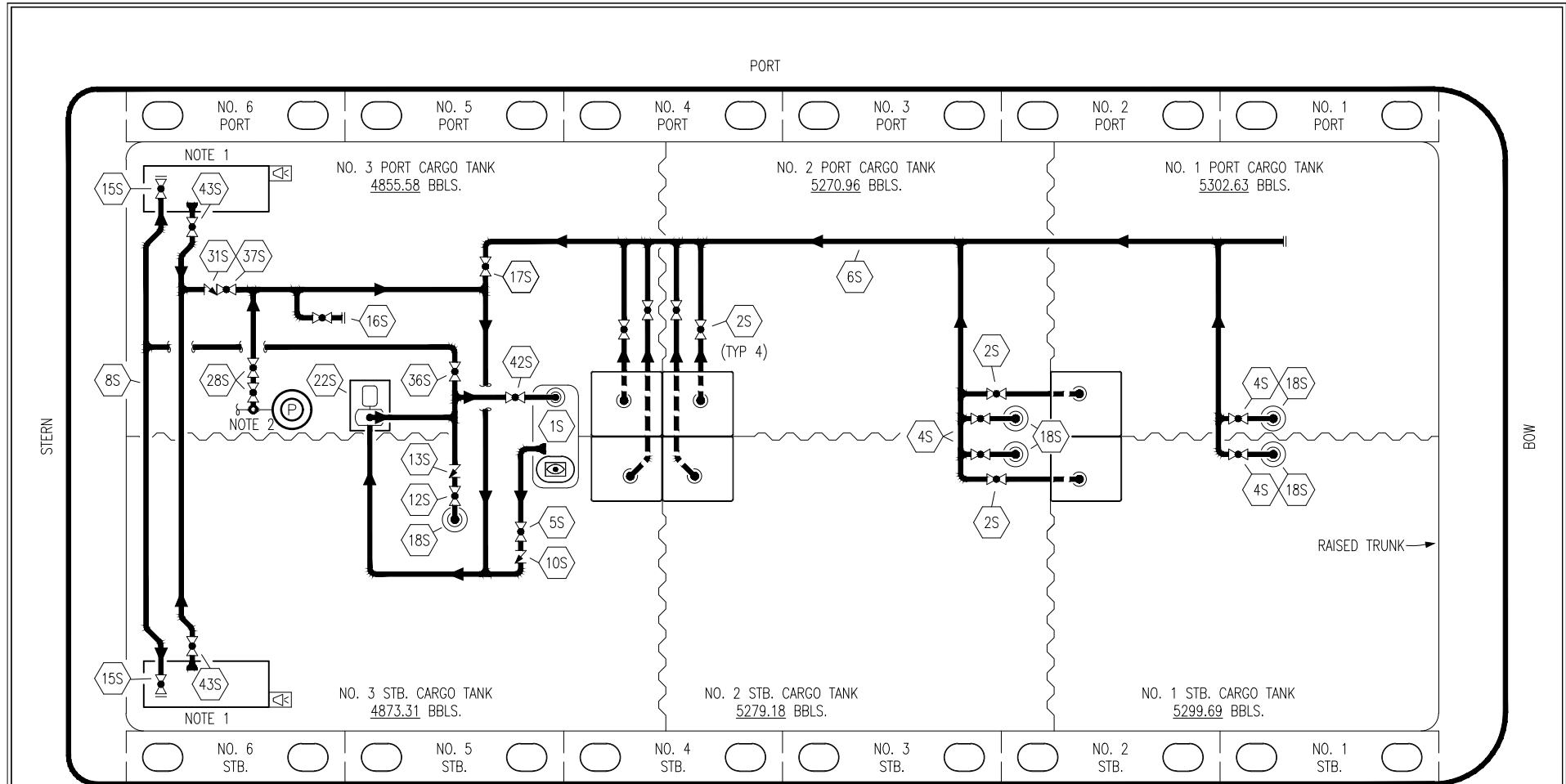
TRINITY MARINE - EX: N/A

1	06/06/22	MRV	DDA	LEP	REVISED PER CLIENT COMMENTS
0	03/01/10	DB	RB	OF	APPROVED
REV.	DATE	BY	CHK	APP	REVISION DESCRIPTION

KIRBY INLAND MARINE

VAPOR
PIPING DIAGRAM

SCALE: NONE	KIRBY 30341B
PAGE: 2 OF 3	REV. 1



PORT

STERN

BOW


STARBOARD

NO	DESCRIPTION	NO	DESCRIPTION
15S	2000 GAL. SLOP TANK	17S	FORWARD CARGO TANK ISOLATION
2S	CARGO SUMP SUCTION VALVE	18S	STRIPPING DROP
4S	CARGO TANK SUCTION VALVE	22S	2" VERSAMETIC PUMP
5S	SLOP TANK SUCTION VALVE	28S	CARGO PIPING SUCTION
6S	SUCTION HEADER PIPING	31S	CHECK VALVE
8S	DISCHARGE HEADER PIPING	36S	STRIPPING PUMP DISCHARGE VALVE
10S	SLOP TANK CHECK VALVE	37S	BLOCK VALVE
12S	RETURN TO CARGO TANK VALVE	42S	SLOP TANK FILL VALVE
13S	RETURN TO CARGO CHECK VALVE	43S	DRIP PAN SUCTION VALVE
15S	HEADER DISCHARGE VALVE		— ABOVE DECK PIPING
16S	REMOTE SUCTION CONNECTION		- - - BELOW DECK PIPING

NOTE 1: CONTAINMENT P/S

NOTE 2: CONNECTS TO PUMP DISCHARGE PIPING

TRINITY MARINE – EX: N/A

					KIRBY INLAND MARINE 	
1	06/06/22	MRV	DDA	LEP	REVISED PER CLIENT COMMENTS	
0	03/01/10	DB	RB	OF	APPROVED	
REV.	DATE	BY	CHK	APP	REVISION	DESCRIPTION
					SCALE:	NONE
					PAGE:	3 OF 3
						KIRBY 30341B
						REV. 1