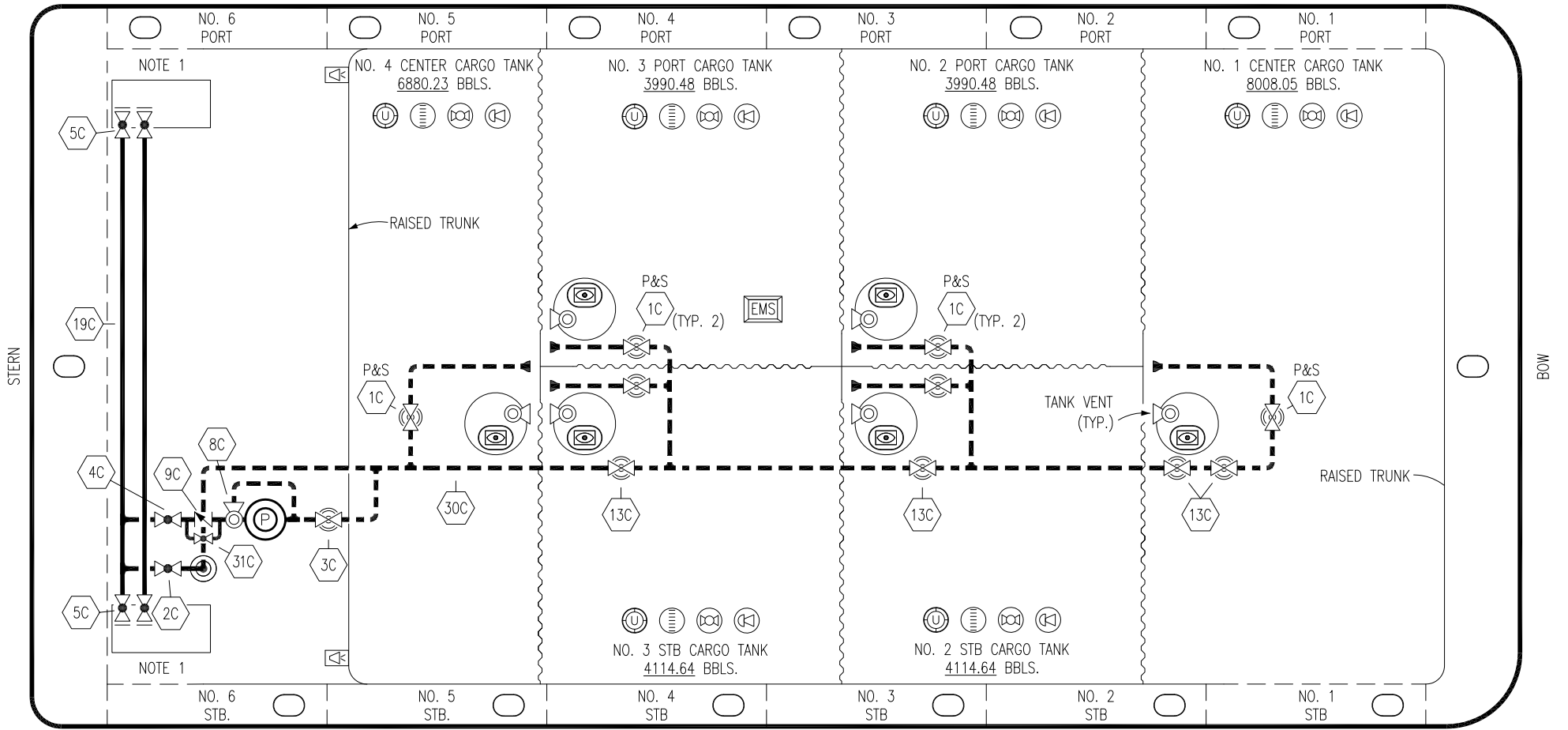


PORT



STERN

BOW

STARBOARD

- | | | | |
|----|----------------------|-----|--------------------------|
| NO | DESCRIPTION | NO | DESCRIPTION |
| 1C | CARGO TANK VALVE | 9C | CHECK VALVE |
| 2C | LOAD VALVE | 13C | CARGO PIPING BLOCK VALVE |
| 3C | MASTER SUCTION VALVE | 19C | CARGO HEADER |
| 4C | DISCHARGE VALVE | 30C | CARGO PIPELINE |
| 5C | HEADER VALVE | 31C | BYPASS VALVE |
| 8C | RELIEF VALVE | 37C | CARGO DROP |
| | ABOVE DECK PIPING | | |
| | BELOW DECK PIPING | | |

NOTE 1: CONTAINMENT P/S

DRAVO SHIPYARD – EX: DBL 33

1	10/12/21	MRV	DDA	LEP	REVISED PER CLIENT COMMENTS
0	09/08/16	WFB	DDA		ISSUED FOR APPROVAL
REV.	DATE	BY	CHK	APP	REVISION DESCRIPTION

KIRBY INLAND MARINE

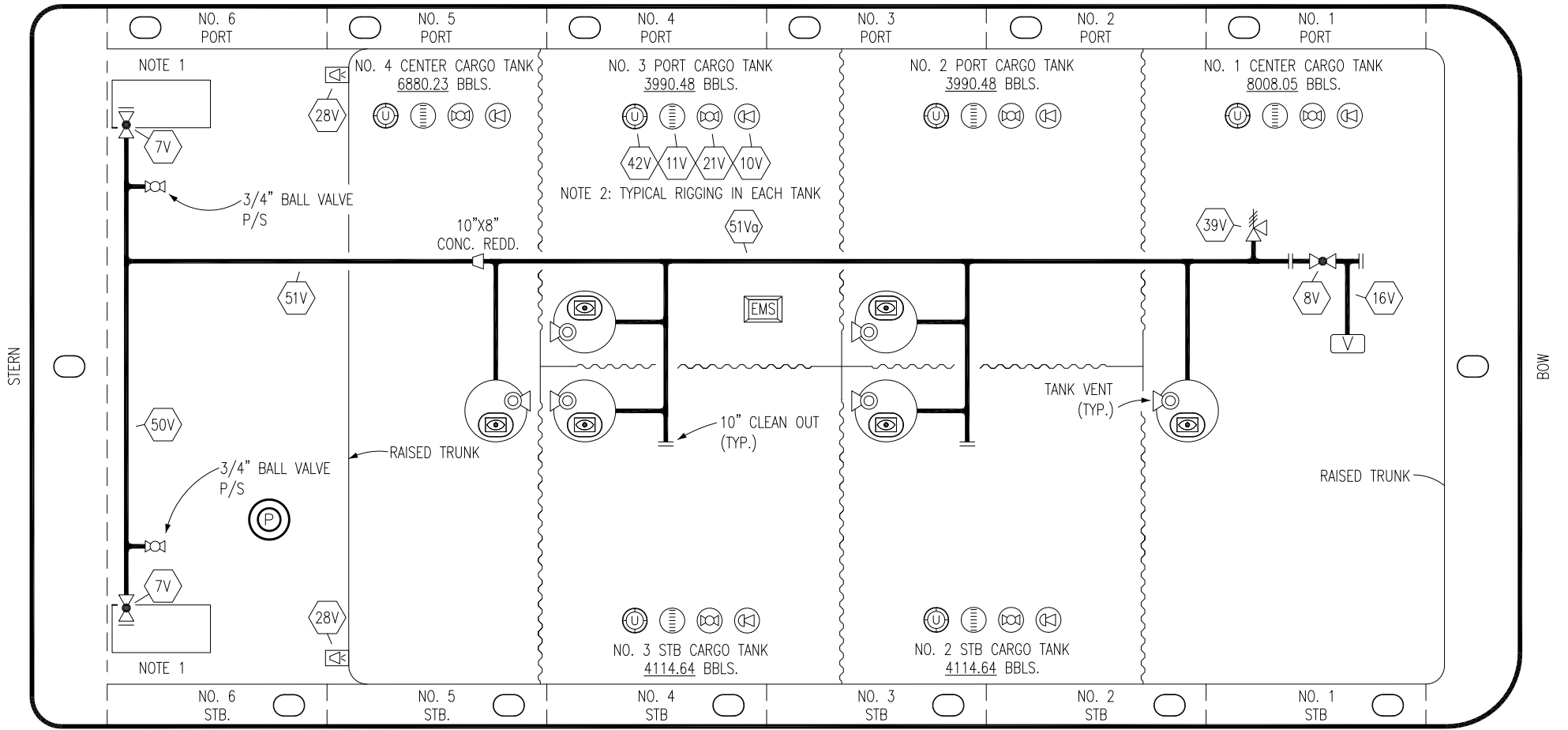
CARGO
PIPING FLOW DIAGRAM

KIRBY 30313

REV. 1

SCALE: NONE
PAGE: 1 OF 3


PORT



STERN

BOW

STARBOARD

- | | | | |
|-----|----------------------------|---|-----------------------|
| NO | DESCRIPTION | NO | DESCRIPTION |
| 7V | 8" HEADER VALVE | 28V | DOCK CONNECTION ALARM |
| 8V | 10" VENT STACK VALVE | 39V | PRESSURE/VACUUM VALVE |
| 10V | HIGH LEVEL/OVERFILL ALARM | 42V | 8" ULLAGE HATCH |
| 11V | 8" 1-METER GAUGE STICK | 50V | 8" VAPOR HEADER |
| 16V | 10" VAPOR VENT STACK | 51V | 8" VAPOR PIPELINE |
| 19V | EMERGENCY ENGINE SHUT DOWN | 51Va | 10" VAPOR PIPELINE |
| 21V | 2" HERMETIC GAUGE |  | ABOVE DECK PIPING |


NOTE 1: CONTAINMENT P/S

NOTE 2: TYPICAL RIGGING IN EACH TANK

DRAVO SHIPYARD - EX: DBL 33

1	10/12/21	MRV	DDA	LEP	REVISED PER CLIENT COMMENTS
0	09/08/16	WFB	DDA		ISSUED FOR APPROVAL
REV.	DATE	BY	CHK	APP	REVISION DESCRIPTION

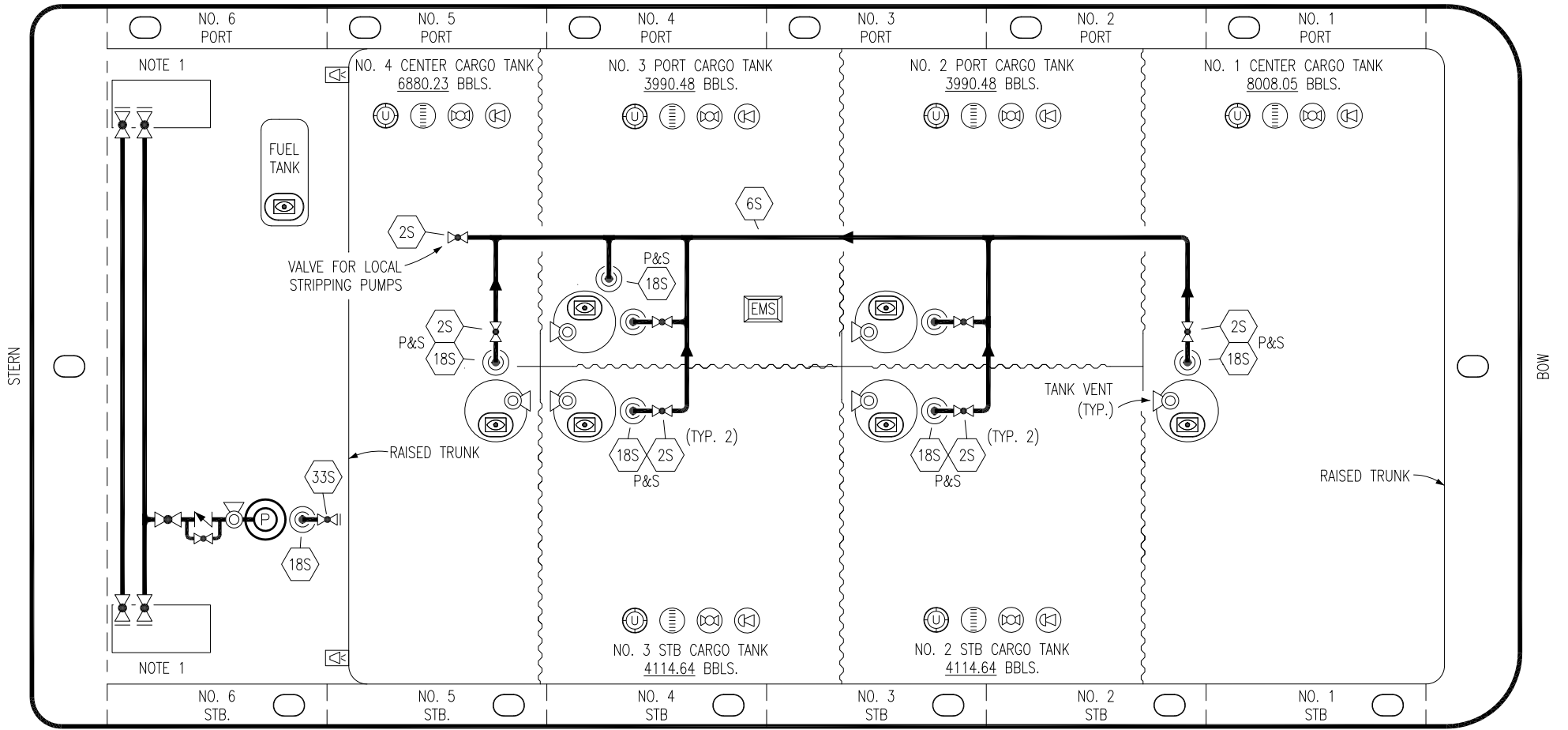
KIRBY INLAND MARINE



VAPOR
PIPING FLOW DIAGRAM

SCALE: NONE	KIRBY 30313	REV. 1
PAGE: 2 OF 3		

PORT



STERN

BOW

STARBOARD

- NO DESCRIPTION
- 2S CARGO SUMP SUCTION VALVE
- 6S SUCTION HEADER PIPING
- 18S STRIPPING DROP
- 33S PUMP WELL SUCTION VALVE

NOTE 1: CONTAINMENT P/S

DRAVO SHIPYARD – EX: DBL 33

1	10/12/21	MRV	DDA	LEP	REVISED PER CLIENT COMMENTS	
0	09/08/16	WFB	DDA		ISSUED FOR APPROVAL	
REV.	DATE	BY	CHK	APP	REVISION DESCRIPTION	

KIRBY INLAND MARINE

STRIPPING
PIPING FLOW DIAGRAM

SCALE: NONE	KIRBY 30313	REV. 1
PAGE: 3 OF 3		