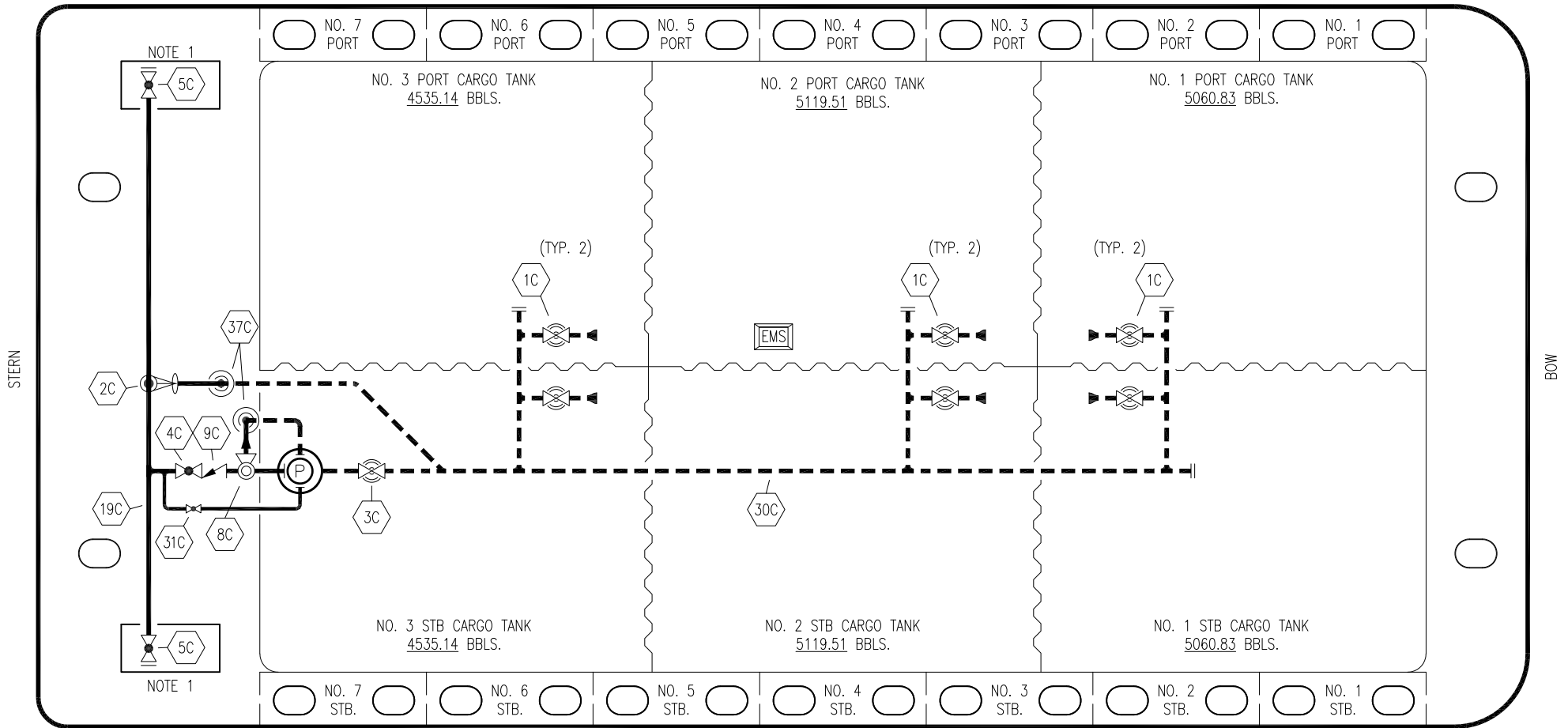


PORT



STERN

BOW

STARBOARD

NO	DESCRIPTION	NO	DESCRIPTION
1C	8" CARGO TANK VALVE	19C	8" CARGO HEADER
2C	8" LOAD VALVE	30C	10" CARGO PIPELINE
3C	10" MASTER SUCTION VALVE	31C	BYPASS VALVE
4C	8" DISCHARGE VALVE	37C	CARGO DROP
5C	8" HEADER VALVE	—	— ABOVE DECK PIPING
8C	6" RELIEF VALVE	---	--- BELOW DECK PIPING
9C	8" CHECK VALVE		

NOTE 1: CONTAINMENT P/S

TRINITY MARINE — EX. WTC 3012-3015

0	09/20/22	MRV	DDA	FIX	REVISED PER CLIENT COMMENTS
A	04/28/17	WFB	DDA		ISSUED FOR APPROVAL
REV.	DATE	BY	CHK	APP	REVISION DESCRIPTION

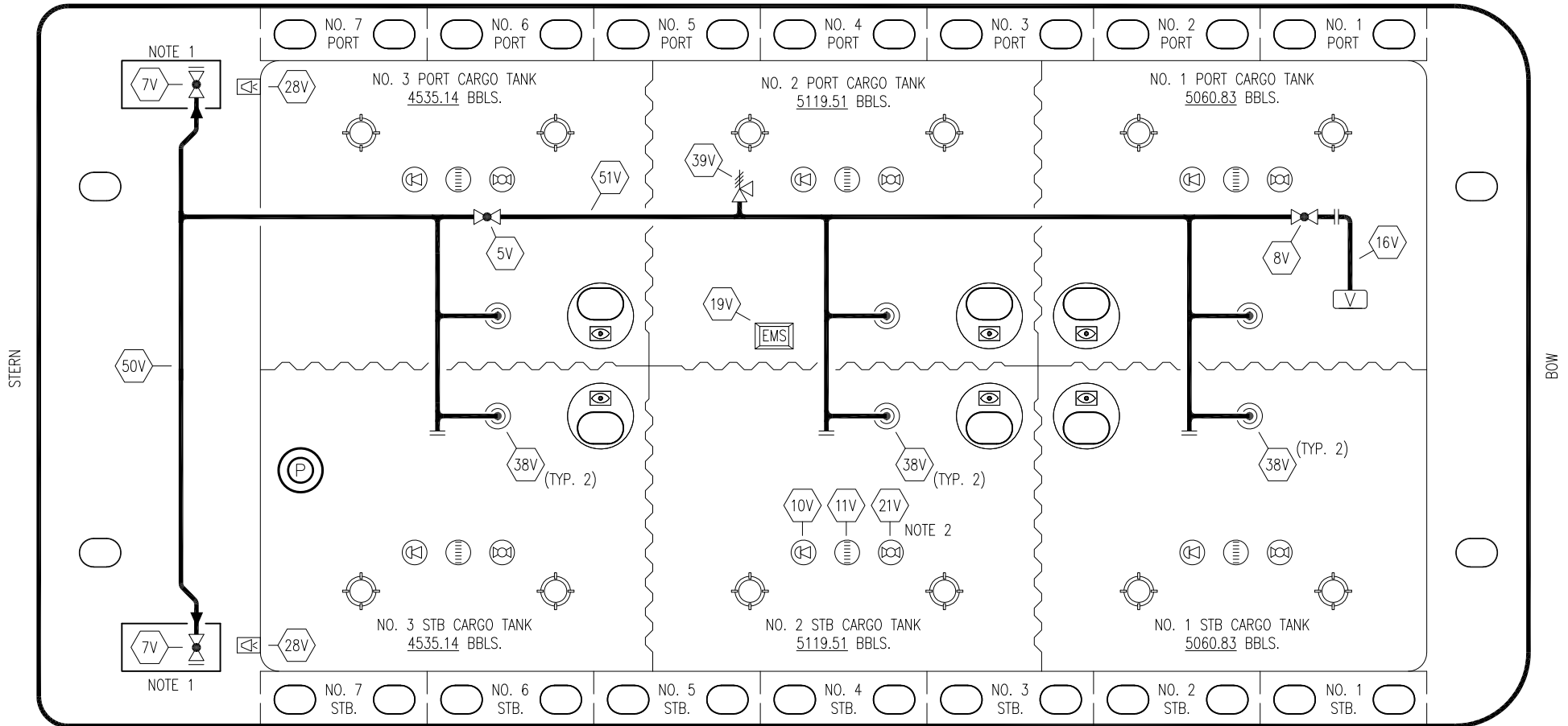
KIRBY INLAND MARINE

**CARGO
PIPING FLOW DIAGRAM**

SCALE: NONE
PAGE: 1 OF 3

KIRBY 30084 REV. **0**

PORT



- | | | | |
|-----|---------------------------|-------|------------------------------|
| NO | DESCRIPTION | NO | DESCRIPTION |
| 5V | BLOCK VALVE | 28V | DOCK CONNECTION ALARM |
| 7V | HEADER VALVE | 38V | VAPOR DROP OR PENETRATION |
| 8V | VENT STACK VALVE | 39V | PRESSURE/VACUUM RELIEF VALVE |
| 10V | HIGH LEVEL/OVERFILL ALARM | 50V | VAPOR HEADER |
| 11V | GAUGE STICK | 51V | VAPOR PIPELINE |
| 16V | VAPOR VENT STACK | — — — | BELOW DECK PIPING |
| 19V | EMERGENCY SHUT DOWN | | |
| 21V | HERMETIC GAUGE | | |

STARBOARD

NOTE 2: TYPICAL RIGGING IN EACH TANK

NOTE 1: CONTAINMENT P/S

TRINITY MARINE – EX. WTC 3012–3015

KIRBY INLAND MARINE 

**VAPOR
PIPING FLOW DIAGRAM**

0	09/20/22	MRV	DDA	FIX	REVISED PER CLIENT COMMENTS
A	04/28/17	WFB	DDA		ISSUED FOR APPROVAL
REV.	DATE	BY	CHK	APP	REVISION DESCRIPTION

SCALE: NONE
PAGE: 2 OF 3

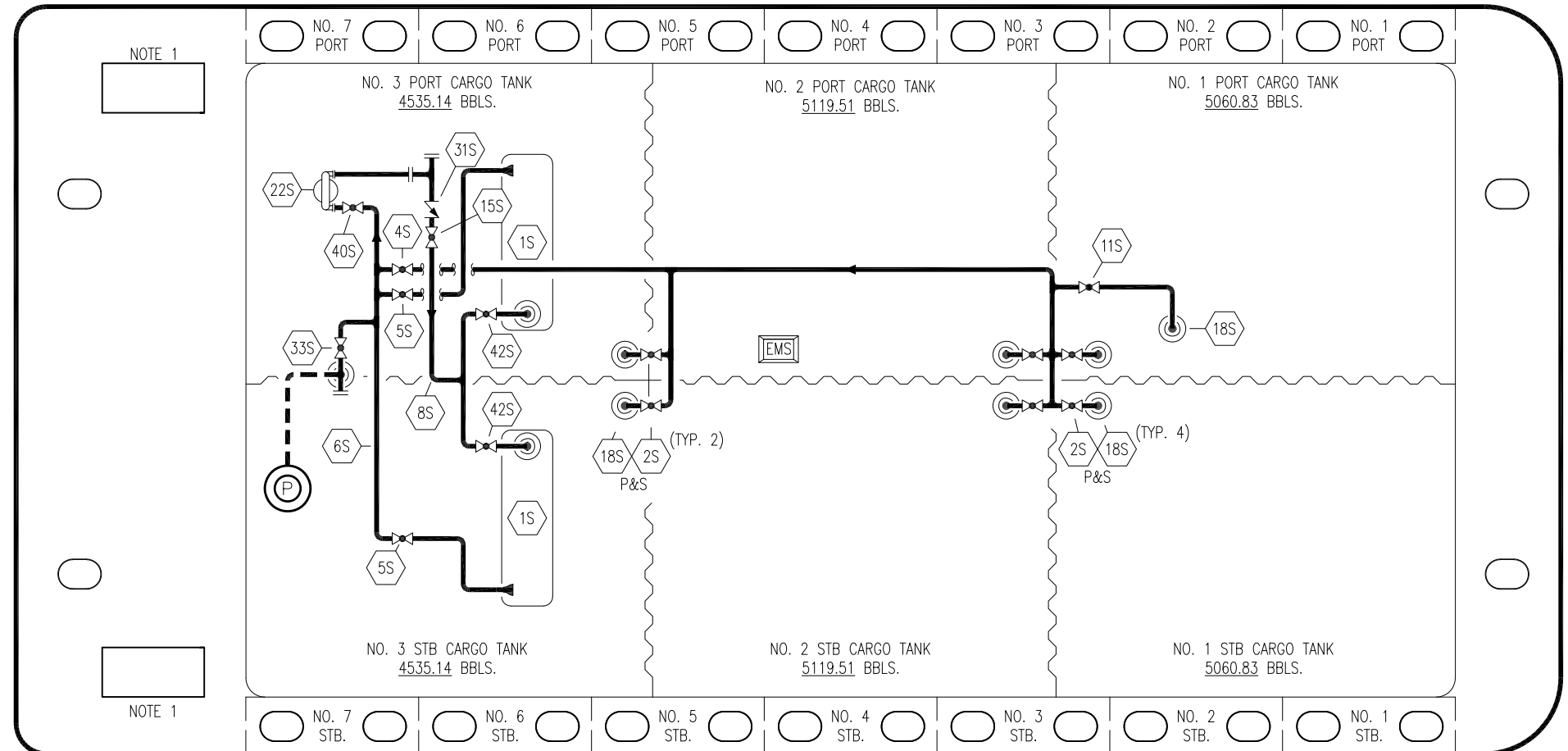
KIRBY 30084

REV. **0**

PORT

STERN

BOW



NOTE 1

NOTE 1

NO	DESCRIPTION	NO	DESCRIPTION
1S	SLOP TANK	22S	STRIPPING PUMP
2S	CARGO SUMP SUCTION VALVE	31S	CHECK VALVE
5S	SLOP TANK SUCTION VALVE	33S	PUMP WELL SUCTION VALVE
6S	SUCTION HEADER PIPING	40S	HEADER SUCTION VALVE
8S	DISCHARGE HEADER PIPING	42S	SLOP TANK FILL VALVE
15S	HEADER DISCHARGE VALVE	—	— ABOVE DECK PIPING
18S	STRIPPING DROP	---	--- BELOW DECK PIPING

STARBOARD

NOTE 1: CONTAINMENT P/S

TRINITY MARINE — EX. WTC 3012—3015

REV.	DATE	BY	CHK	APP	REVISION DESCRIPTION
0	09/20/22	MRV	DDA	FIX	REVISED PER CLIENT COMMENTS
A	04/28/17	WFB	DDA		ISSUED FOR APPROVAL

KIRBY INLAND MARINE

STRIPPING
PIPING FLOW DIAGRAM

SCALE: NONE	KIRBY 30084	REV.	0
PAGE: 3 OF 3			