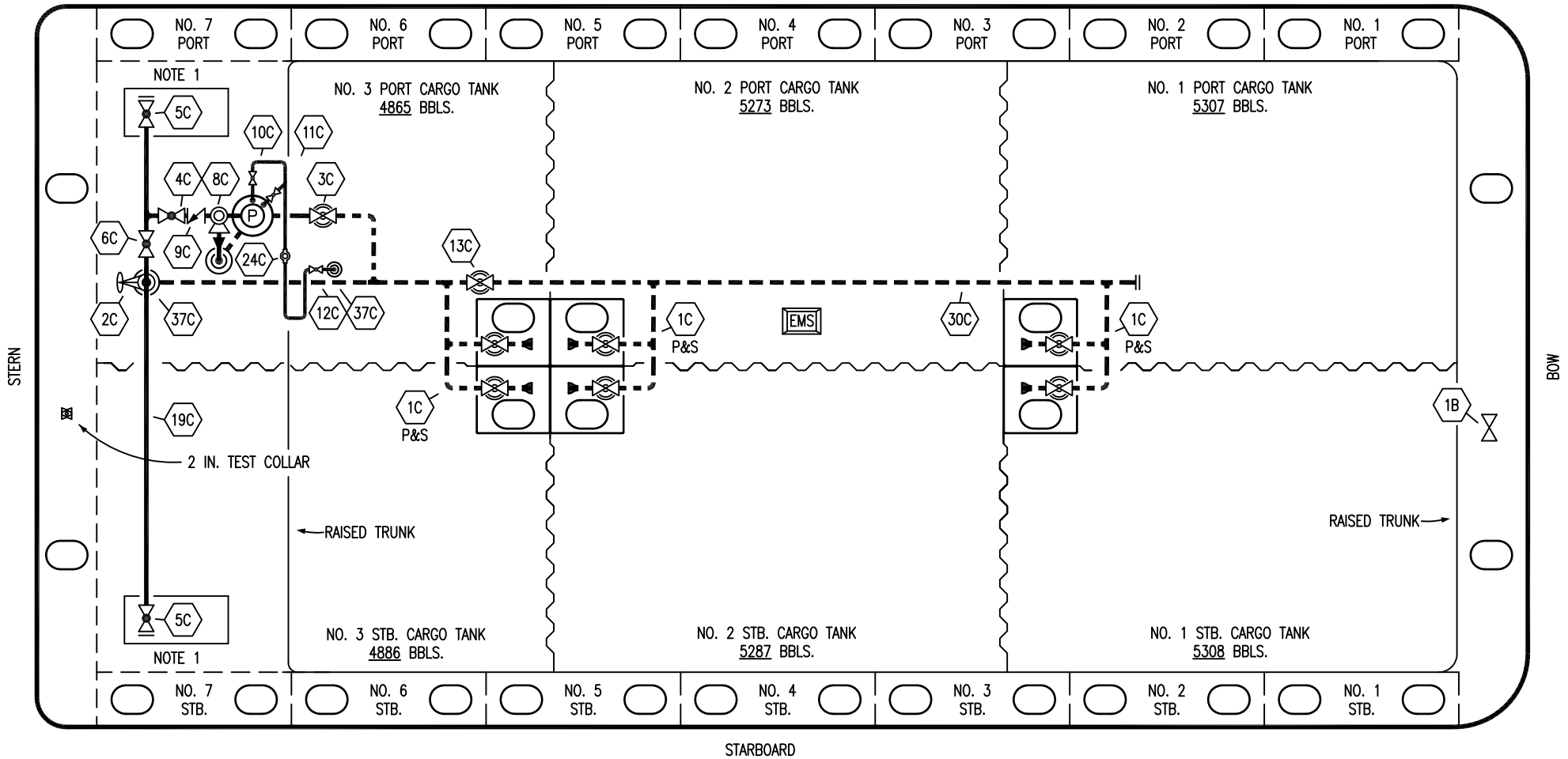


PORT



NO	DESCRIPTION	NO	DESCRIPTION
1B	BALLAST TANK VALVE	10C	BURP VALVE
1C	CARGO TANK VALVE	11C	BLEED OFF VALVE
2C	LOAD VALVE	12C	BURP VALVE RETURN
3C	MASTER SUCTION VALVE	13C	BLOCK VALVE
4C	DISCHARGE VALVE	19C	CARGO HEADER
5C	HEADER VALVE	24C	FLOW INDICATOR
6C	SALVAGE VALVE	30C	CARGO PIPELINE
8C	RELIEF VALVE	37C	CARGO DROP
9C	CHECK VALVE		

— ABOVE DECK PIPING
- - - BELOW DECK PIPING

NOTE 1: CONTAINMENT P/S

REV.	DATE	BY	CHK	APP	REVISION DESCRIPTION
1	05/27/15	BB	BB		REVISED PER CLIENT COMMENTS
0	12/20/12	KS	DDA		ISSUED FOR REVIEW

TRINITY

KIRBY INLAND MARINE

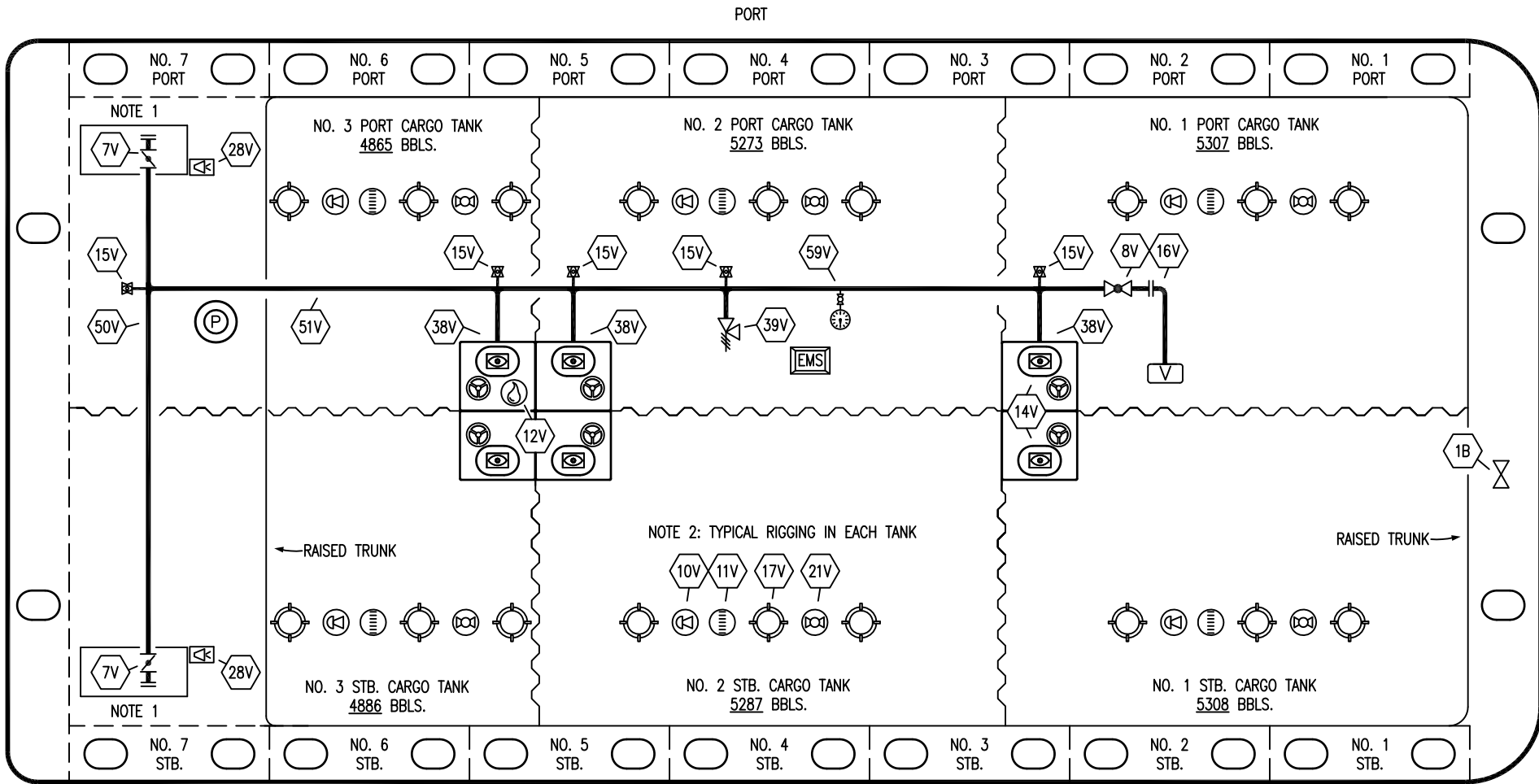
CARGO



PIPING FLOW DIAGRAM

KIRBY 30044B

SCALE: NONE
PAGE: 1 OF 3

REV. **1**




- | | | | |
|-----------|------------------------------|---|--|
| NO | DESCRIPTION | NO | DESCRIPTION |
| 1B | BALLAST TANK VALVE | 19V | EMERGENCY ENGINE SHUT DOWN |
| 7V | 8" HEADER VALVE | 21V | 2" HERMETIC GAUGE |
| 8V | 8" VENT STACK VALVE | 28V | DOCK CONNECTION ALARM |
| 10V | 8" HIGH LEVEL/OVERFILL ALARM | 38V | 8" PENETRATION  |
| 11V | 8" 1-METER STICK GAUGE | 39V | 6" PRESSURE/VACUUM VALVE |
| 12V | 2" HERMETIC SAMPLE | 50V | 8" VAPOR HEADER |
| 14V | 8" SIGHT GLASS | 51V | 8" VAPOR PIPELINE |
| 15V | 2" INSPECTION PORT |  | ABOVE DECK PIPING |
| 16V | VAPOR VENT STACK | | |

NOTE 1: CONTAINMENT P/S
 NOTE 2: TYPICAL RIGGING IN EACH TANK

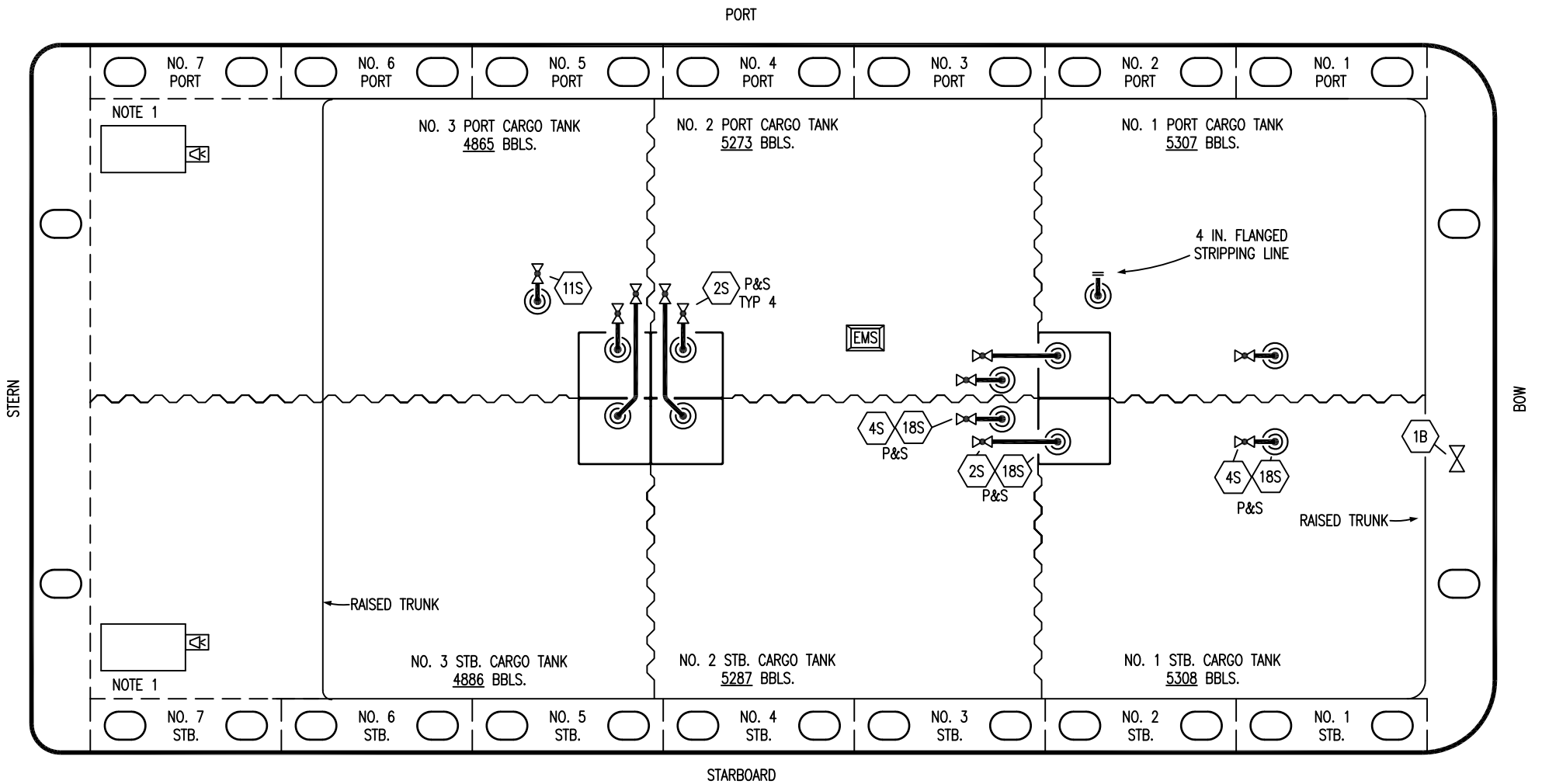
REV.	DATE	BY	CHK	APP	REVISION DESCRIPTION
1	05/27/15	BB	BB		REVISED PER CLIENT COMMENTS
0	12/20/12	KS	DDA		ISSUED FOR REVIEW



TRINITY

KIRBY INLAND MARINE 

**VAPOR
PIPING FLOW DIAGRAM**

SCALE: NONE	KIRBY 30044B	REV. 1
PAGE: 2 OF 3		



- | NQ | DESCRIPTION |
|---|--|
| 1B | BALLAST TANK VALVE |
| 2S | CARGO SUMP SUCTION VALVE |
| 4S | CARGO TANK SUCTION VALVE |
| 11S | LOWER CARGO PIPELINE SUCTION VLV. |
| 18S | STRIPPING DROP  |
|  | ABOVE DECK PIPING |

NOTE 1: CONTAINMENT P/S

TRINITY

REV.	DATE	BY	CHK	APP	REVISION DESCRIPTION
1	05/27/15	BB	BB		REVISED PER CLIENT COMMENTS
0	12/20/12	KS	DDA		ISSUED FOR REVIEW

KIRBY INLAND MARINE 

**STRIPPING
PIPING FLOW DIAGRAM**

SCALE: NONE
PAGE: 3 OF 3

KIRBY 30044B

REV. **1**