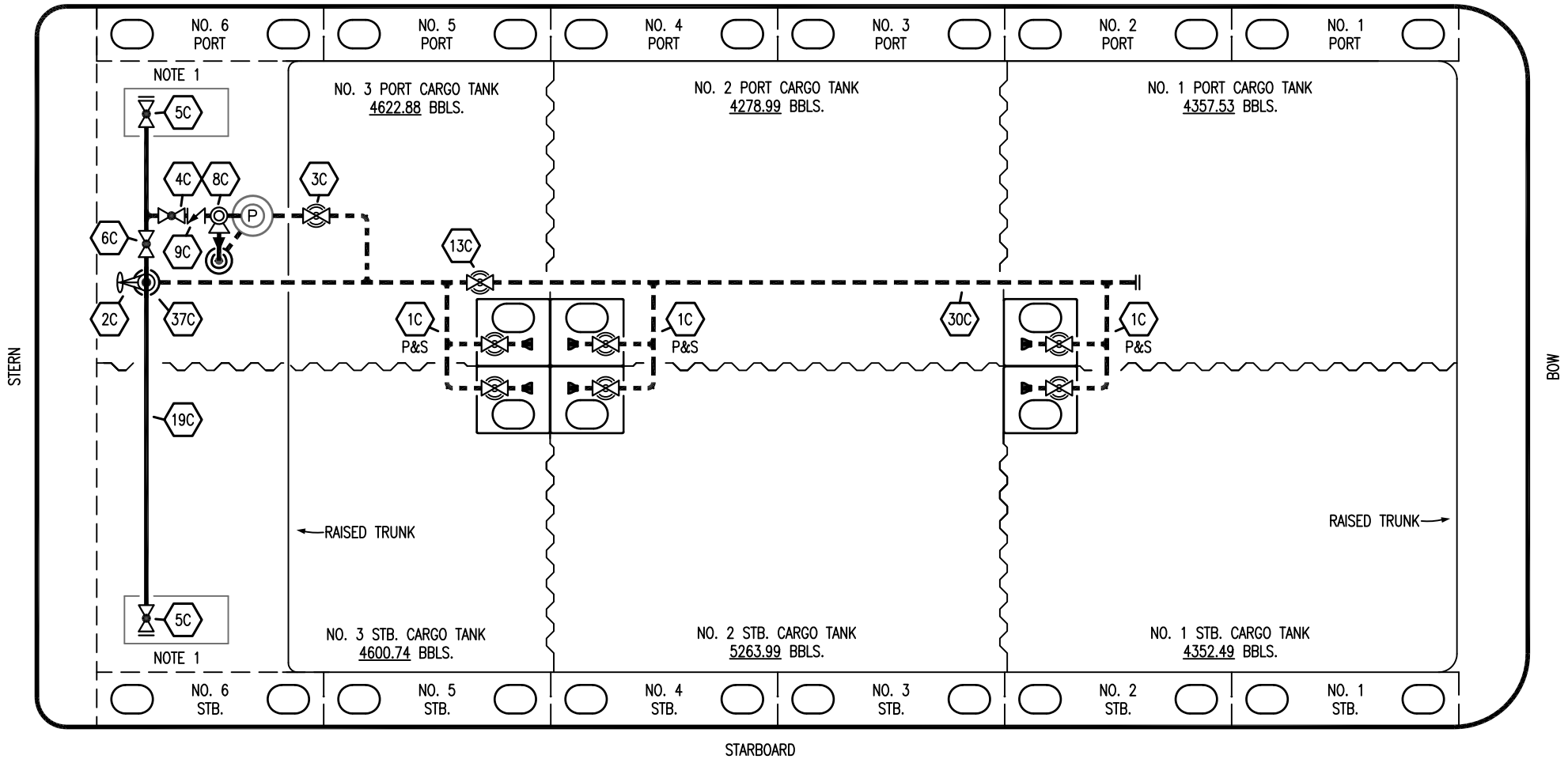


PORT




NO	DESCRIPTION	NO	DESCRIPTION
1C	CARGO TANK VALVE	13C	BLOCK VALVE
2C	LOAD VALVE	19C	CARGO HEADER
3C	MASTER SUCTION VALVE	30C	CARGO PIPELINE
4C	DISCHARGE VALVE	37C	CARGO DROP
5C	HEADER VALVE	---	ABOVE DECK PIPING
6C	SALVAGE VALVE	---	BELOW DECK PIPING
8C	RELIEF VALVE		
9C	CHECK VALVE		

NOTE 1: CONTAINMENT P/S

TRINITY

REV.	DATE	BY	CHK	APP	REVISION DESCRIPTION
1	07/13/23	MRV	DDA	MW	REVISED PER CLIENT COMMENTS
0	12/20/12	KS	DDA		ISSUED FOR REVIEW

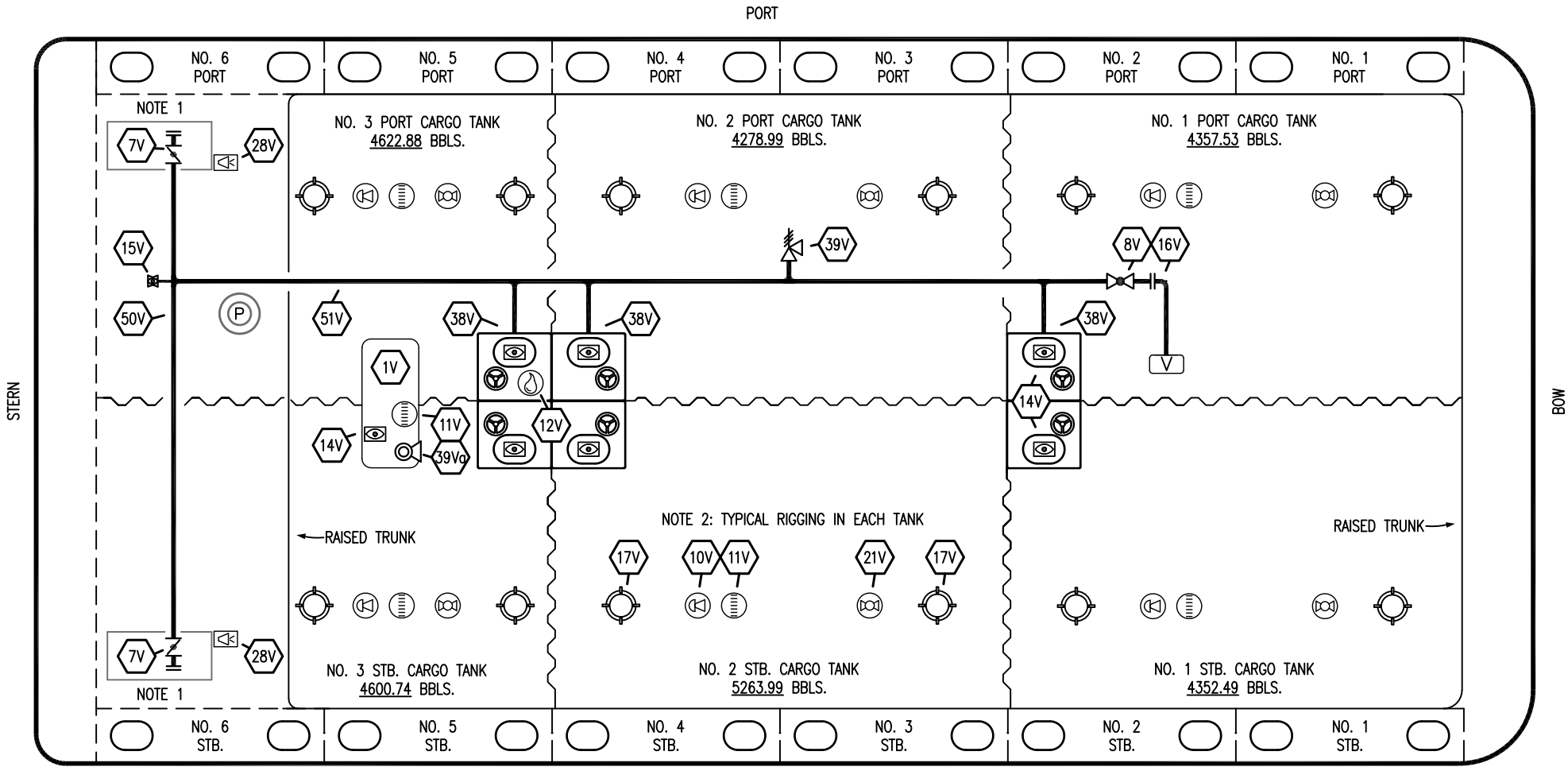
KIRBY INLAND MARINE 

CARGO PIPING FLOW DIAGRAM

SCALE: NONE

KIRBY 30043B REV. **1**

PAGE: 1 OF 3



- | | | | |
|-----------|------------------------------|-----------|--------------------------|
| NO | DESCRIPTION | NO | DESCRIPTION |
| 1V | 3000 GAL. SLOP TANK | 21V | 2" HERMETIC GAUGE |
| 7V | 8" HEADER VALVE | 28V | DOCK CONNECTION ALARM |
| 8V | 8" VENT STACK VALVE | 38V | 8" PENETRATION |
| 10V | 8" HIGH LEVEL/OVERFILL ALARM | 39V | 6" PRESSURE/VACUUM VALVE |
| 11V | 8" 1-METER STICK GAUGE | 39Va | 4" PRESSURE/VACUUM VALVE |
| 12V | 2" HERMETIC SAMPLE | 50V | 8" VAPOR HEADER |
| 14V | 8" SIGHT GLASS | 51V | 8" VAPOR PIPELINE |
| 15V | 2" INSPECTION PORT | | |
| 16V | VAPOR VENT STACK | | |

NOTE 1: CONTAINMENT P/S
 NOTE 2: TYPICAL RIGGING IN EACH TANK

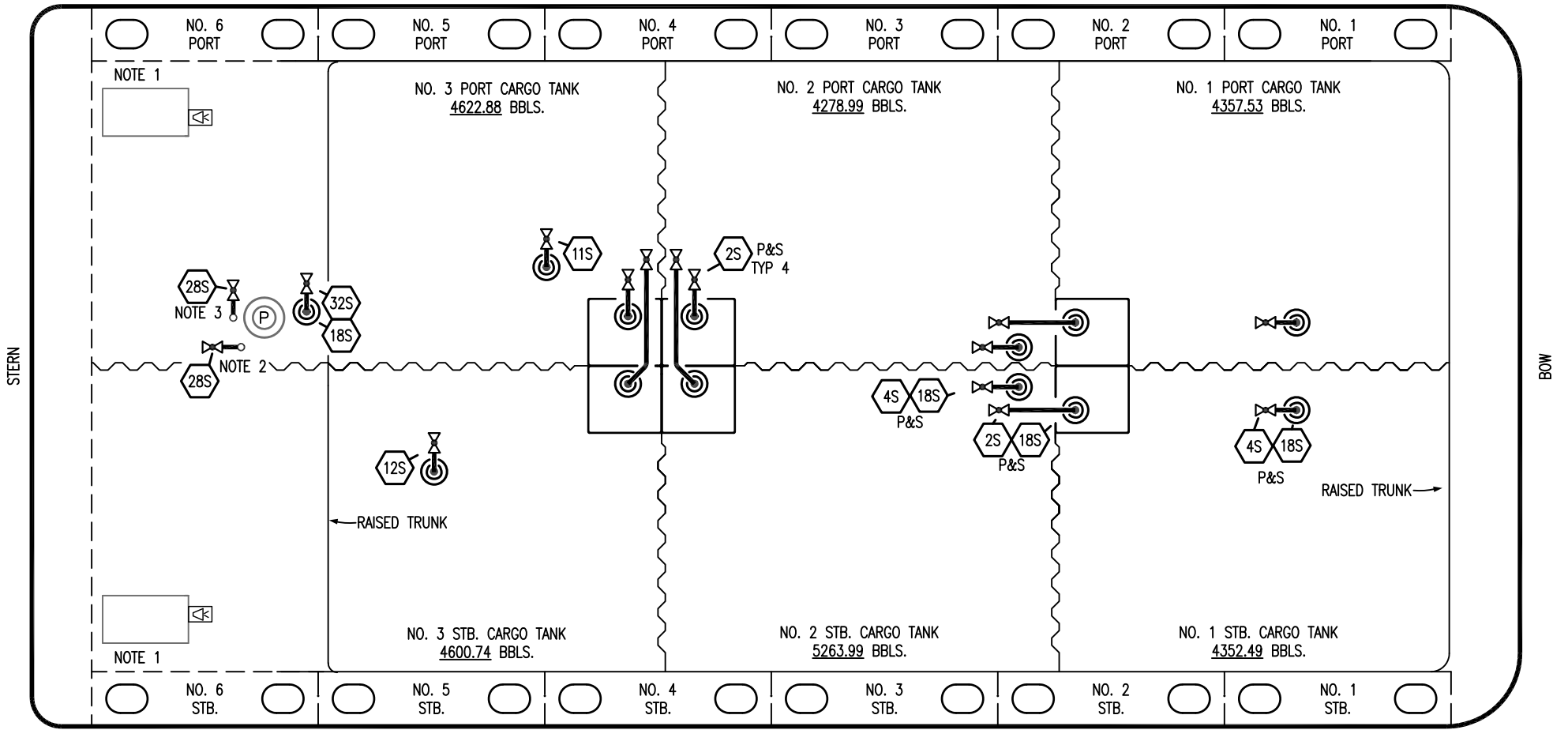
REV.	DATE	BY	CHK	APP	REVISION DESCRIPTION
1	07/13/23	MRV	DDA	MW	REVISED PER CLIENT COMMENTS
0	12/20/12	KS	DDA		ISSUED FOR REVIEW

KIRBY INLAND MARINE

**VAPOR
PIPING FLOW DIAGRAM**

TRINITY

PORT



- | | | | |
|-----|-----------------------------------|-----|------------------------|
| NO | DESCRIPTION | NO | DESCRIPTION |
| 2S | CARGO SUMP SUCTION VALVE | 18S | STRIPPING DROP |
| 4S | CARGO TANK SUCTION VALVE | 28S | CARGO PIPING SUCTION |
| 11S | LOWER CARGO PIPELINE SUCTION VLV. | 32S | PUMP WELL PRIMER VALVE |
| 12S | RETURN TO CARGO TANK VALVE | — | ABOVE DECK PIPING |

NOTE 1: CONTAINMENT P/S
 NOTE 2: CONNECTS TO P/V PIPING.
 NOTE 3: CONNECTS TO PUMP DISCHARGE PIPING.

1	07/13/23	MRV	DDA	MW	REVISED PER CLIENT COMMENTS
0	12/20/12	KS	DDA		ISSUED FOR REVIEW
REV.	DATE	BY	CHK	APP	REVISION DESCRIPTION

TRINITY

KIRBY INLAND MARINE

**STRIPPING
PIPING FLOW DIAGRAM**

SCALE: NONE	KIRBY 30043B	REV. 1
PAGE: 3 OF 3		