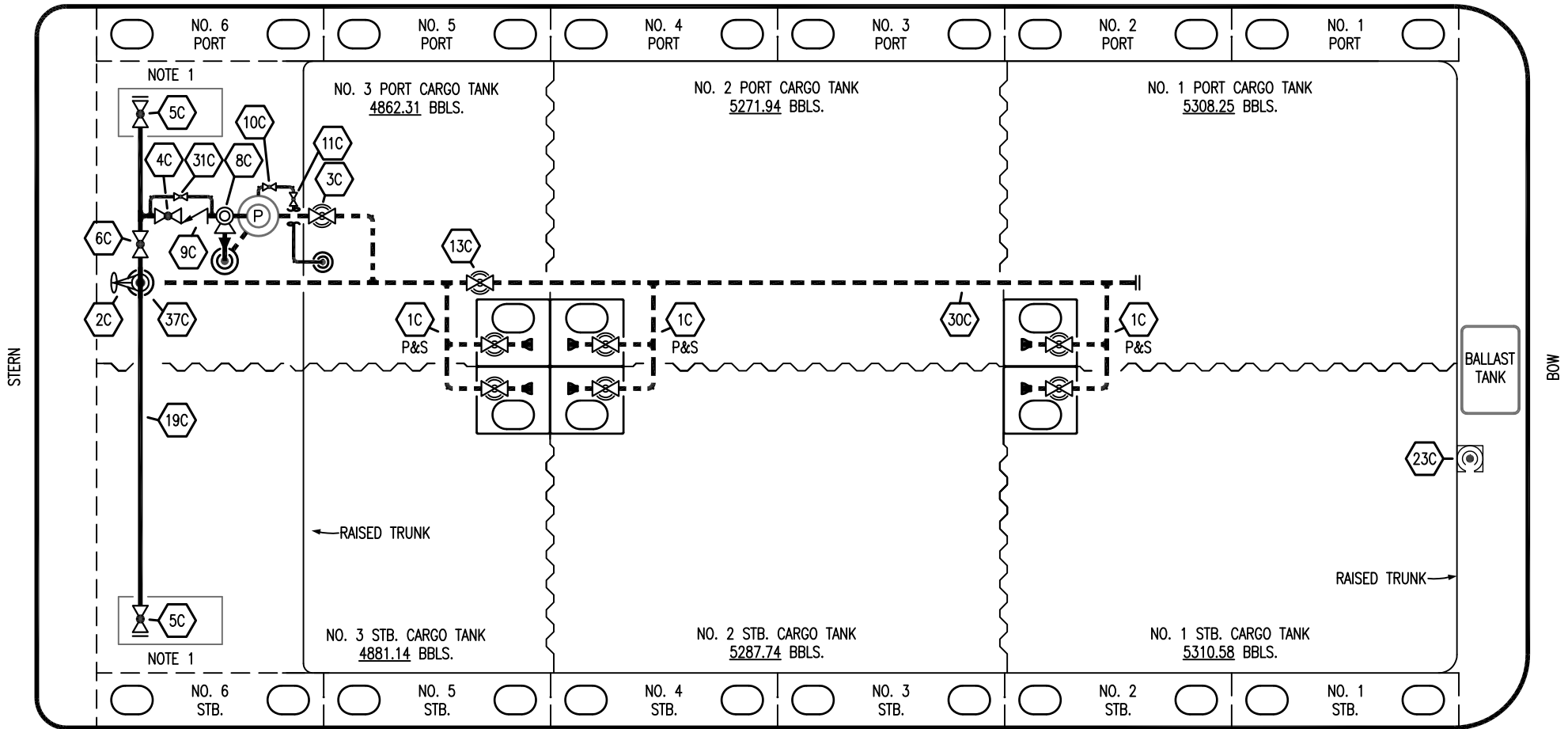


PORT



STERN

BOW

STARBOARD

- |     |                      |       |                       |
|-----|----------------------|-------|-----------------------|
| NO  | DESCRIPTION          | NO    | DESCRIPTION           |
| 1C  | CARGO TANK VALVE     | 13C   | BLOCK VALVE           |
| 2C  | LOAD VALVE           | 19C   | CARGO HEADER          |
| 3C  | MASTER SUCTION VALVE | 23C   | SEA CHEST BLOCK VALVE |
| 4C  | DISCHARGE VALVE      | 30C   | CARGO PIPELINE        |
| 5C  | HEADER VALVE         | 31C   | BYPASS VALVE          |
| 6C  | SALVAGE VALVE        | 37C   | CARGO DROP            |
| 8C  | RELIEF VALVE         | —     | ABOVE DECK PIPING     |
| 9C  | CHECK VALVE          | - - - | BELOW DECK PIPING     |
| 10C | BURP VALVE           |       |                       |
| 11C | BLEED OFF VALVE      |       |                       |

NOTE 1: CONTAINMENT P/S

TRINITY

REV.	DATE	BY	CHK	APP	REVISION DESCRIPTION
3	08/18/23	MRV	DDA	TL	REVISED PER CLIENT COMMENTS
2	06/02/23	MRV	DDA	LEP	REVISED PER CLIENT COMMENTS
1	05/30/18	WFB	DDA		ADDED 2" BYPASS VALVE
0	12/20/12	KS	DDA		ISSUED FOR REVIEW

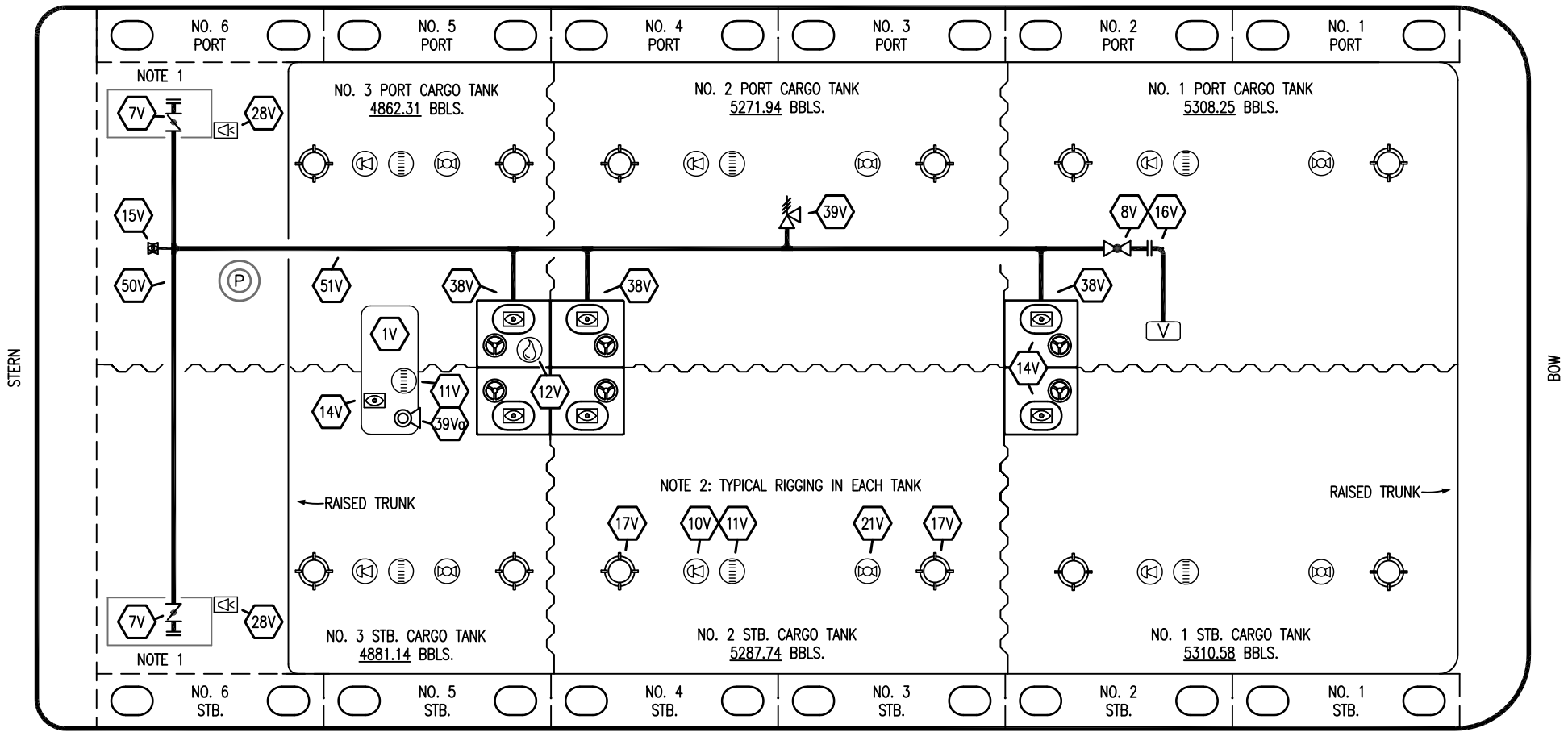
**KIRBY INLAND MARINE**

**CARGO  
PIPING FLOW DIAGRAM**

SCALE: NONE  
PAGE: 1 OF 3

**KIRBY 30042B** REV. **3**

PORT



STERN

BOW

STARBOARD

NO	DESCRIPTION	NO	DESCRIPTION
1V	3000 GAL. SLOP TANK	21V	2" HERMETIC GAUGE
7V	8" HEADER VALVE	28V	DOCK CONNECTION ALARM
8V	8" VENT STACK VALVE	38V	8" PENETRATION
10V	8" HIGH LEVEL/OVERFILL ALARM	39V	6" PRESSURE/VACUUM VALVE
11V	8" 1-METER STICK GAUGE	39Vg	4" PRESSURE/VACUUM VALVE
12V	2" HERMETIC SAMPLE	50V	8" VAPOR HEADER
14V	8" SIGHT GLASS	51V	8" VAPOR PIPELINE
15V	2" INSPECTION PORT		— ABOVE DECK PIPING
16V	VAPOR VENT STACK		

NOTE 1: CONTAINMENT P/S  
NOTE 2: TYPICAL RIGGING IN EACH TANK

TRINITY

**KIRBY INLAND MARINE** 

**VAPOR  
PIPING FLOW DIAGRAM**

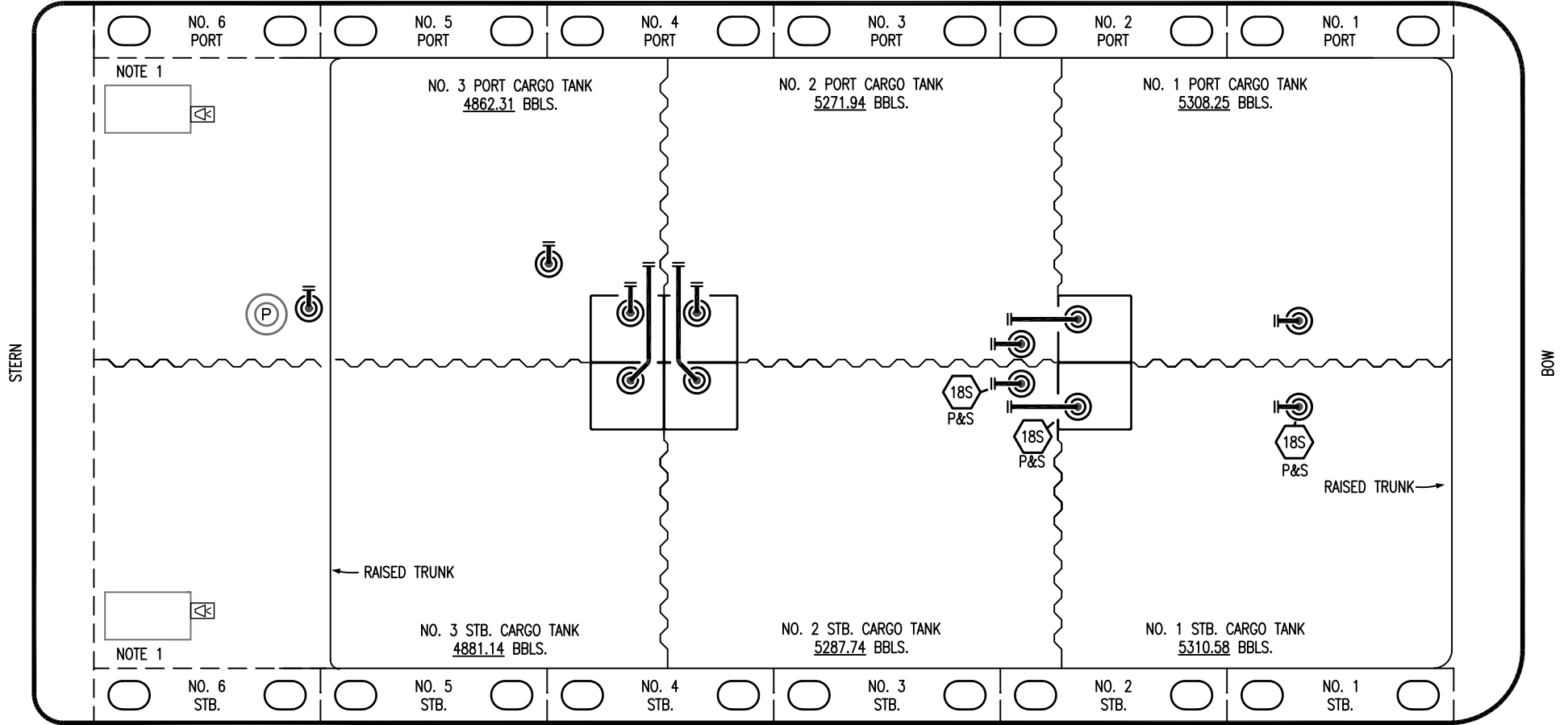
REV.	DATE	BY	CHK	APP	REVISION DESCRIPTION
1	06/02/23	MRV	DDA	LEP	REVISED PER CLIENT COMMENTS
0	12/20/12	KS	DDA		ISSUED FOR REVIEW

SCALE: NONE  
PAGE: 2 OF 3

**KIRBY 30042B**

REV. **1**

PORT



STERN

BOW

STARBOARD

- NO DESCRIPTION
- STRIPPING DROP
- ABOVE DECK PIPING

NOTE 1: CONTAINMENT P/S

TRINITY

REV.	DATE	BY	CHK	APP	REVISION DESCRIPTION
1	06/02/23	MRV	DDA	LEP	REVISED PER CLIENT COMMENTS
0	12/20/12	KS	DDA		ISSUED FOR REVIEW

KIRBY INLAND MARINE

STRIPPING  
PIPING FLOW DIAGRAM

SCALE: NONE	KIRBY 30042B
PAGE: 3 OF 3	REV. 1