

NO	DESCRIPTION	NO	DESCRIPTION
1C	CARGO TANK VALVE	13C	BLOCK VALVE
2C	LOAD VALVE	19C	CARGO HEADER
3C	MASTER SUCTION VALVE	23C	SEA CHEST BLOCK VALVE
4C	DISCHARGE VALVE	30C	CARGO PIPELINE
5C	HEADER VALVE	37C	CARGO DROP
8C	RELIEF VALVE	—	—
9C	CHECK VALVE	—	—

— ABOVE DECK PIPING
 - - - BELOW DECK PIPING

NOTE 1: CONTAINMENT P/S

REV.	DATE	BY	CHK	APP	REVISION DESCRIPTION
3	06/08/22	MRV	DDA	DEM	REVISED PER CLIENT COMMENTS
2	06/06/17	WFB	DDA		REVISED PER CLIENT COMMENTS
1	09/06/16	WFB	DDA		REVISED PER CLIENT COMMENTS
0	04/12/10	RB	RB	OF	APPROVED

TRINITY

KIRBY INLAND MARINE

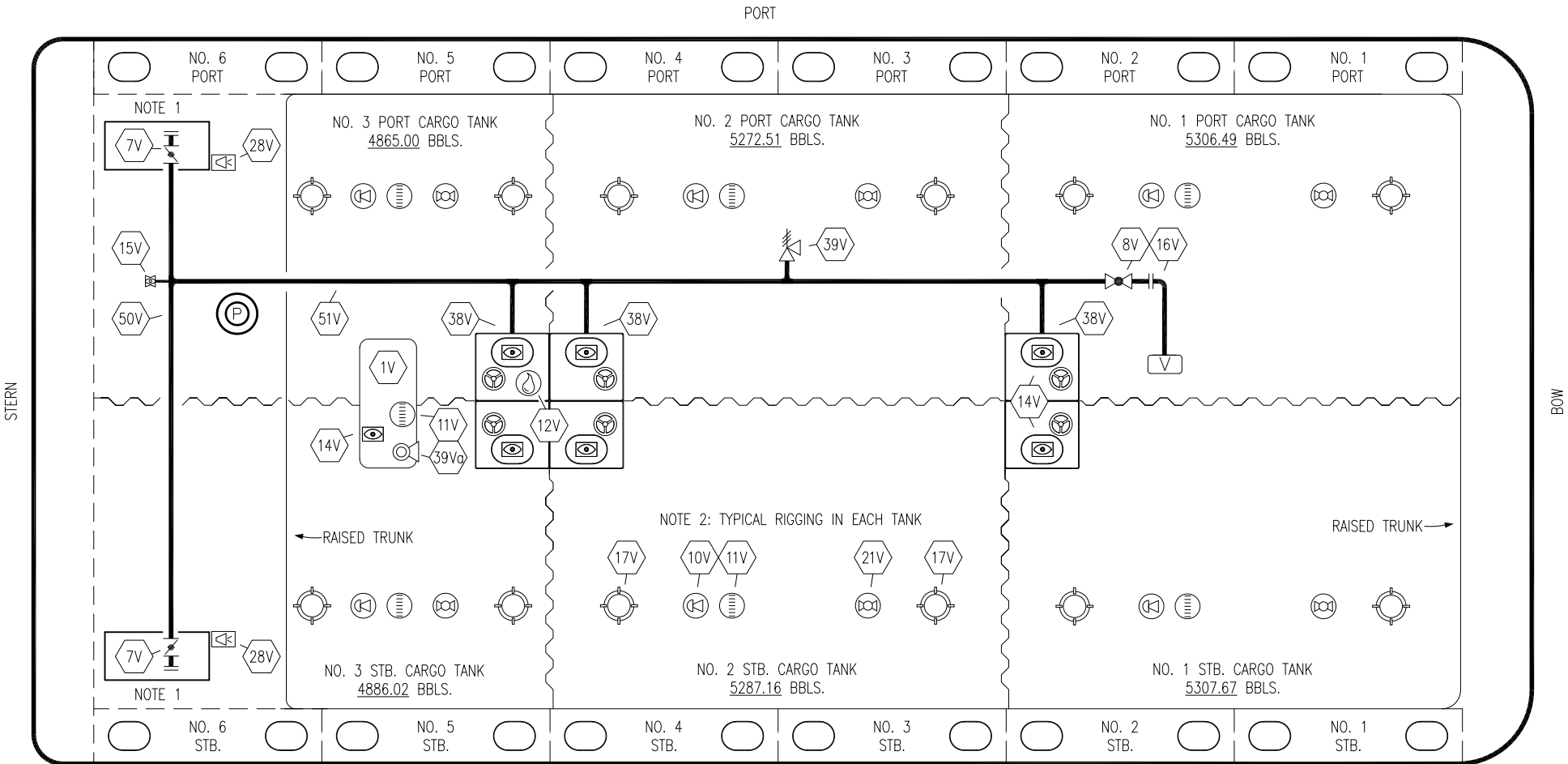
CARGO

PIPING FLOW DIAGRAM

KIRBY 30041B

SCALE: NONE
PAGE: 1 OF 3

REV. **3**



NO	DESCRIPTION	NO	DESCRIPTION
1V	3000 GAL. SLOP TANK	21V	2" HERMETIC GAUGE
7V	8" HEADER VALVE	28V	DOCK CONNECTION ALARM
8V	8" VENT STACK VALVE	38V	8" PENETRATION
10V	8" HIGH LEVEL/OVERFILL ALARM	39V	6" PRESSURE/VACUUM VALVE
11V	8" 1-METER STICK GAUGE	39Vg	4" PRESSURE/VACUUM VALVE
12V	2" HERMETIC SAMPLE	50V	8" VAPOR HEADER
14V	8" SIGHT GLASS	51V	8" VAPOR PIPELINE
15V	2" INSPECTION PORT	—	ABOVE DECK PIPING
16V	VAPOR VENT STACK		

NOTE 1: CONTAINMENT P/S
NOTE 2: TYPICAL RIGGING IN EACH TANK

1	06/08/22	MRV	DDA	DEM	REVISED PER CLIENT COMMENTS
0	04/12/10	RB	RB	OF	APPROVED
REV.	DATE	BY	CHK	APP	REVISION DESCRIPTION

TRINITY

KIRBY INLAND MARINE

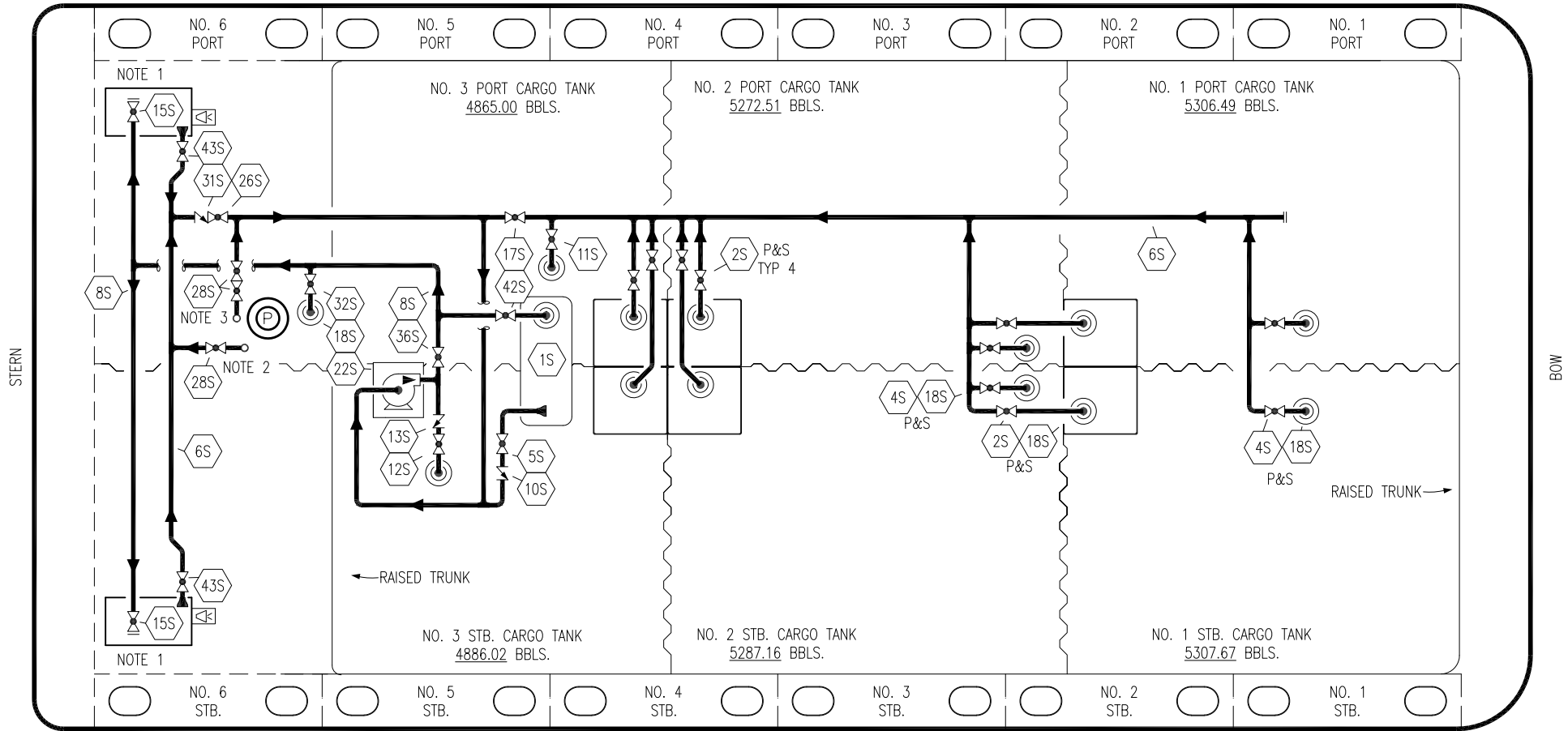
**VAPOR
PIPING FLOW DIAGRAM**

SCALE: NONE
PAGE: 2 OF 3

KIRBY 30041B

REV. **1**

PORT



NO	DESCRIPTION	NO	DESCRIPTION
1S	3000 GAL. SLOP TANK	17S	FORWARD CARGO TANK ISOLATION
2S	CARGO SUMP SUCTION VALVE	18S	STRIPPING DROP
4S	CARGO TANK SUCTION VALVE	22S	STRIPPING PUMP
5S	SLOP TANK SUCTION VALVE	26S	BLOCK VALVE
6S	SUCTION HEADER PIPING	28S	CARGO PIPING SUCTION
8S	DISCHARGE HEADER PIPING	31S	CHECK VALVE
10S	SLOP TANK CHECK VALVE	32S	PUMP WELL PRIMER VALVE
11S	LOWER CARGO PIPELINE SUCTION VL.V.	36S	STRIPPING PUMP DISCHARGE VL.V.
12S	RETURN TO CARGO TANK VALVE	42S	SLOP TANK FILL VALVE
13S	RETURN TO CARGO CHECK VALVE	43S	DRIP PAN SUCTION VALVE
15S	HEADER DISCHARGE VALVE		— ABOVE DECK PIPING

NOTE 1: CONTAINMENT P/S
 NOTE 2: CONNECTS TO P/V PIPING.
 NOTE 3: CONNECTS TO PUMP DISCHARGE PIPING.

REV.	DATE	BY	CHK	APP	REVISION DESCRIPTION
1	06/08/22	MRV	DDA	DEM	REVISED PER CLIENT COMMENTS
0	04/12/10	RB	RB	OF	APPROVED

TRINITY

KIRBY INLAND MARINE

STRIPPING
PIPING FLOW DIAGRAM

SCALE: NONE	KIRBY 30041B	REV.
PAGE: 3 OF 3		1