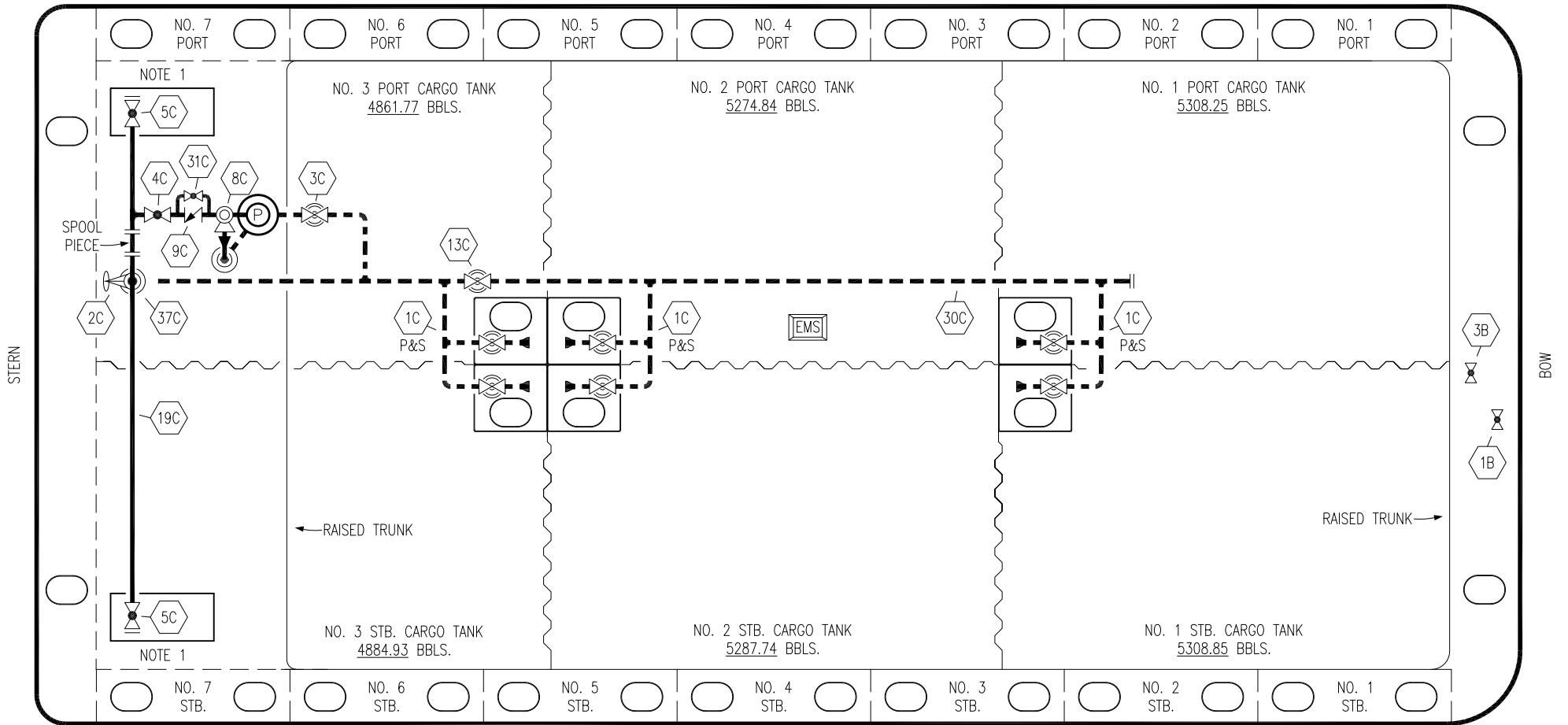


PORT



STARBOARD

NQ	DESCRIPTION	NQ	DESCRIPTION
1B	BALLAST TANK VALVE	13C	BLOCK VALVE
1C	CARGO TANK VALVE	19C	CARGO HEADER
2C	LOAD VALVE	30C	CARGO PIPELINE
3B	SUCTION VALVE	31C	BYPASS VALVE
3C	MASTER SUCTION VALVE	37C	CARGO DROP
4C	DISCHARGE VALVE		
5C	HEADER VALVE		
8C	RELIEF VALVE		
9C	CHECK VALVE		

— ABOVE DECK PIPING
 - - - BELOW DECK PIPING

NOTE 1: CONTAINMENT P/S

TRINITY -- EX: KIRBY 30040

REV.	DATE	BY	CHK	APP	REVISION DESCRIPTION
3	05/16/22	MRV	DDA	DR	REVISED PER CLIENT COMMENTS
2	06/07/17	WFB	DDA		REVISED PER CLIENT COMMENTS
1	06/18/15	BB	BB		REVISED PER CLIENT COMMENTS
0	04/12/10	RB	RB	OF	APPROVED

KIRBY INLAND MARINE

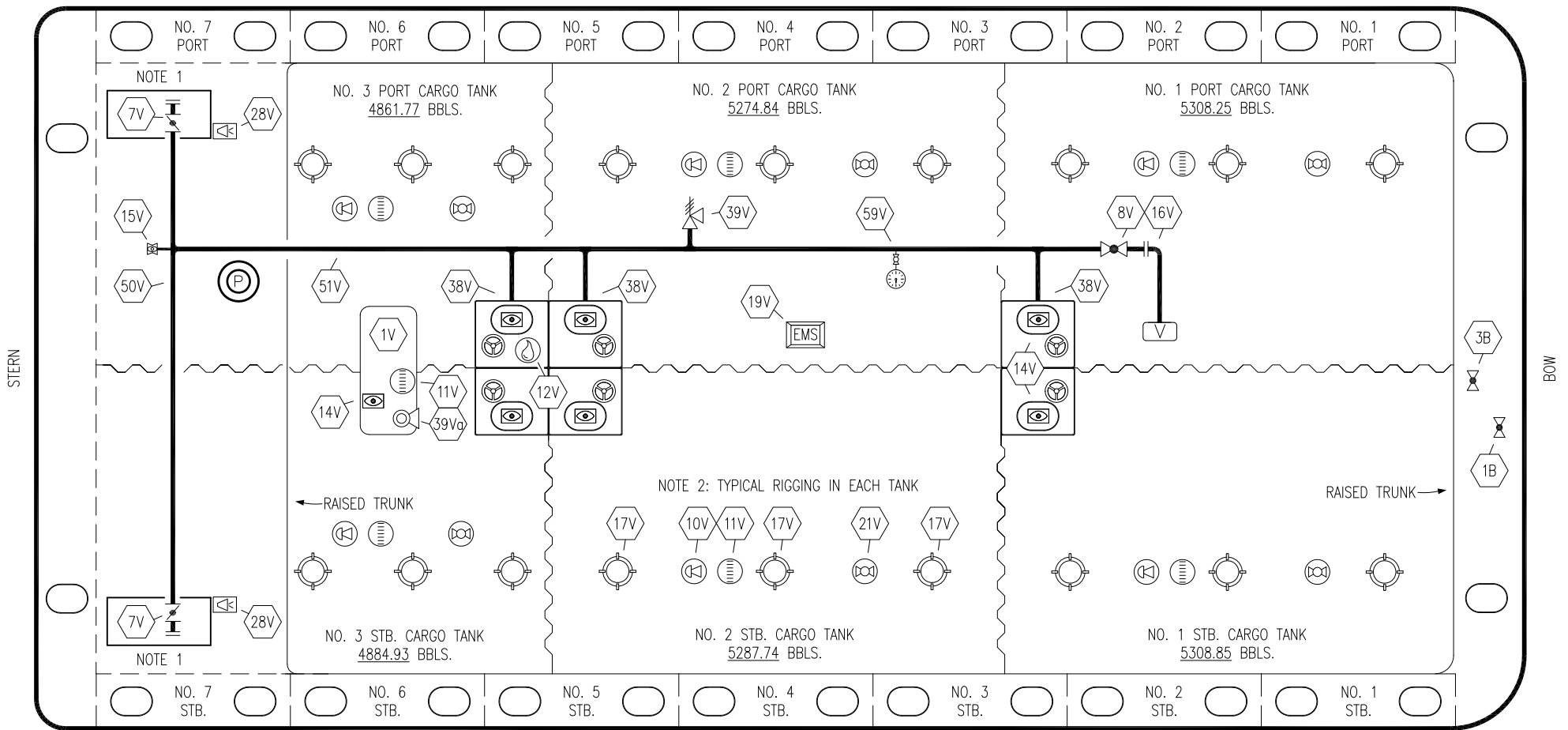
CARGO
PIPING FLOW DIAGRAM

KIRBY 30040B

REV. 3

SCALE: NONE
PAGE: 1 OF 3

PORT



STERN

BOW

STARBOARD

NO	DESCRIPTION	NO	DESCRIPTION
1B	BALLAST TANK VALVE	17V	BUTTERWORTH
1V	3000 GAL. SLOP TANK	19V	EMERGENCY ENGINE SHUT DOWN
3B	SUCTION VALVE	21V	HERMETIC GAUGE
7V	HEADER VALVE	28V	DOCK CONNECTION ALARM
8V	VENT STACK VALVE	38V	PENETRATION
10V	HIGH LEVEL/OVERFILL ALARM	39V	PRESSURE/VACUUM VALVE
11V	1-METER STICK GAUGE	39Vg	PRESSURE/VACUUM VALVE
12V	HERMETIC SAMPLE	50V	VAPOR HEADER
14V	SIGHT GLASS	51V	VAPOR PIPELINE
15V	INSPECTION PORT	59V	PRESS/VAC GAUGE
16V	VAPOR VENT STACK	—	ABOVE DECK PIPING

NOTE 1: CONTAINMENT P/S
NOTE 2: TYPICAL RIGGING IN EACH TANK

TRINITY - EX: KIRBY 30040

REV.	DATE	BY	CHK	APP	REVISION DESCRIPTION
2	05/16/22	MRV	DDA	DR	REVISED PER CLIENT COMMENTS
1	06/18/15	BB	BB		REVISED PER CLIENT COMMENTS
0	04/12/10	RB	RB	OF	APPROVED

KIRBY INLAND MARINE

VAPOR
PIPING FLOW DIAGRAM

KIRBY 30040B

REV. 2

SCALE: NONE
PAGE: 2 OF 3

