


NO	SIZE	DESCRIPTION	NO	SIZE	DESCRIPTION
1C	8"	CARGO TANK VALVE	19C	8"	CARGO HEADER
2C	8"	LOAD VALVE	22C	19"	BUTTERWORTH
3C	10"	MASTER SUCTION VALVE	25C	10"x8"	ECCENTRIC REDUCER
4C	8"	DISCHARGE VALVE	27C	4"	DRIP PAN DRAIN VALVE
5C	8"	HEADER VALVE	28C	6"	HIGH LOAD VALVE
6C	8"	SALVAGE VALVE	38Ca		DEEPWELL DRAIN VALVE
8C	6"	RELIEF VALVE	41C		BLOCK VALVE
9Ca	8"	CHECK VALVE	---		ABOVE DECK PIPING
9Cb	1"	CHECK VALVE	---		BELOW DECK PIPING
15C	2"	BYPASS VALVE (AROUND CHECK VALVE)			
16C		DISCHARGE PRESSURE GAUGE			

NOTE 2: 6 BARREL DRIP PAN

TRINITY MARINE -- EX: SMS 30043

REV.	DATE	BY	CHK	APP	REVISION DESCRIPTION
0	05/16/23	MRV	DDA	FIX	ISSUED FOR APPROVAL



KIRBY INLAND MARINE

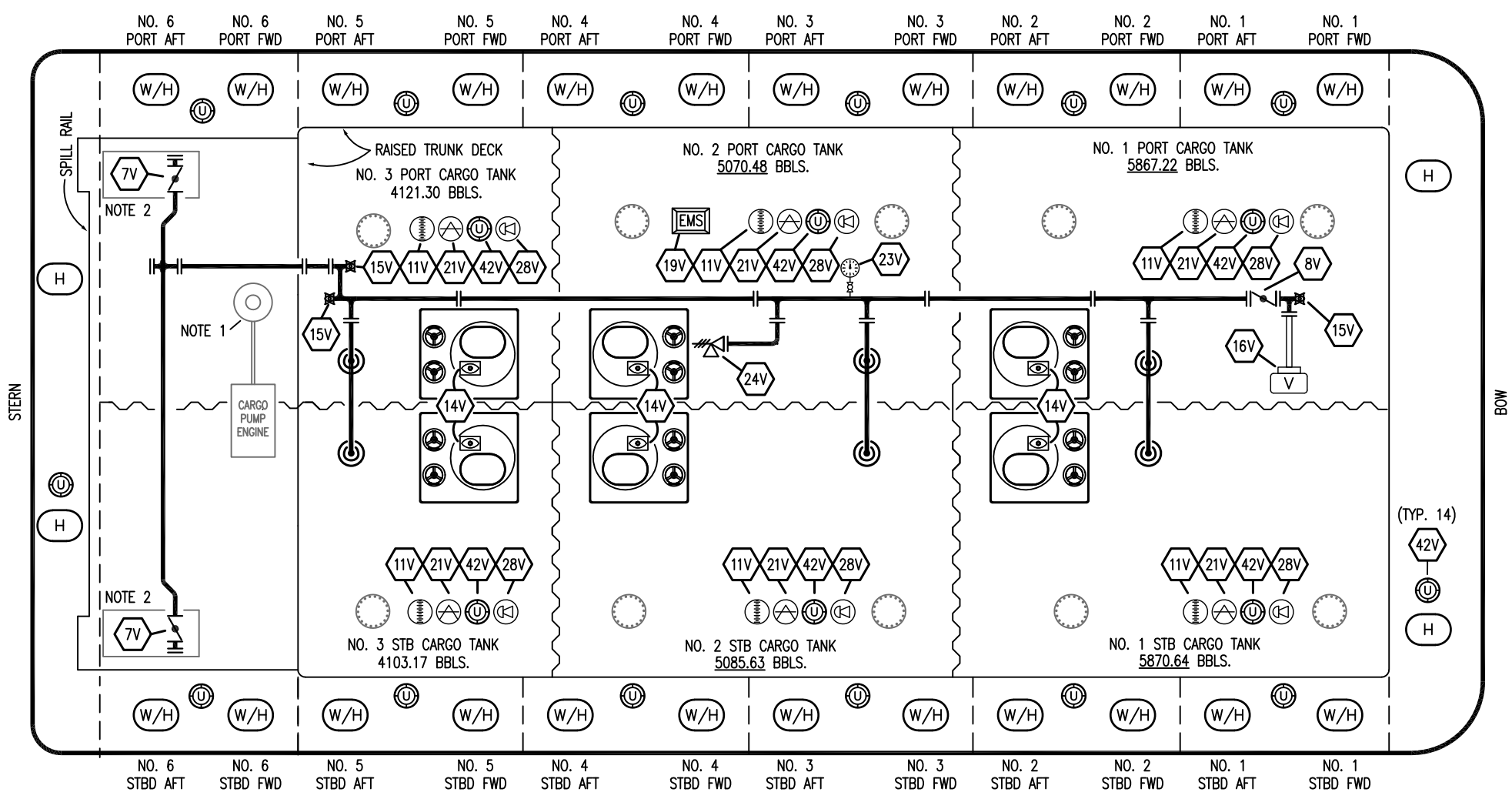
CARGO PIPING FLOW DIAGRAM

KIRBY 30038

SCALE: NONE

PAGE: 1 OF 3

REV. **0**



NO	SIZE	DESCRIPTION	NO	SIZE	DESCRIPTION
7V	8"	HEADER VALVE	23V		PRESSURE GAUGE
8V	8"	VENT STACK VALVE	24V	6"	PRESSURE RELIEF VALVE
11V		GAUGE STICK (LENGTH)	28V		ALARM SENSOR
14V		SIGHT GLASS	42V		ULLAGE HATCH
15V		INSPECTION PORT	— ABOVE DECK PIPING		
16V	8"	VAPOR VENT STACK			
18V		RESTRICTIVE GAUGE TUBE			
19V		EMERGENCY SHUTDOWN SYSTEM			
21V		HERMETIC GAUGE			

NOTE 1: DEEPWELL PUMP
 NOTE 2: 6 BARREL DRIP PAN

TRINITY MARINE -- EX: SMS 30043

0	05/16/23	MRV	DDA	FIX	ISSUED FOR APPROVAL
REV.	DATE	BY	CHK	APP	REVISION DESCRIPTION

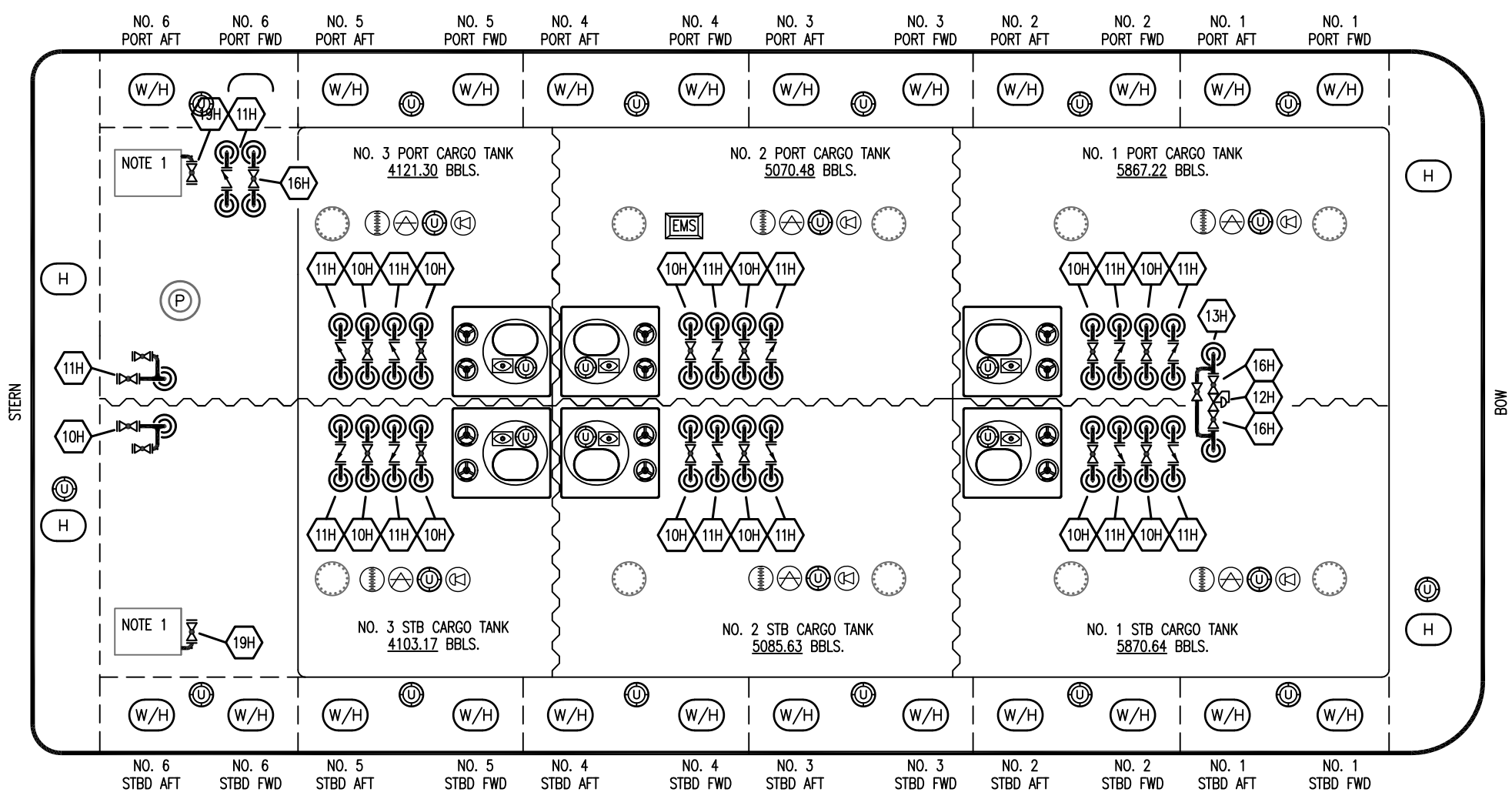
KIRBY INLAND MARINE

VAPOR
PIPING FLOW DIAGRAM

KIRBY 30038

REV. 0

SCALE: NONE
PAGE: 2 OF 3



NO. 6 PORT AFT NO. 6 PORT FWD NO. 5 PORT AFT NO. 5 PORT FWD NO. 4 PORT AFT NO. 4 PORT FWD NO. 3 PORT AFT NO. 3 PORT FWD NO. 2 PORT AFT NO. 2 PORT FWD NO. 1 PORT AFT NO. 1 PORT FWD

NO. 6 STBD AFT NO. 6 STBD FWD NO. 5 STBD AFT NO. 5 STBD FWD NO. 4 STBD AFT NO. 4 STBD FWD NO. 3 STBD AFT NO. 3 STBD FWD NO. 2 STBD AFT NO. 2 STBD FWD NO. 1 STBD AFT NO. 1 STBD FWD

- NO DESCRIPTION
- 10H SUPPLY VALVE
 - 11H RETURN
 - 12H PRESSURE REGULATOR
 - 13H BY-PASS
 - 16H ISOLATION VALVE
 - 19H DRIP PAN DRAIN VALVE
- ABOVE DECK PIPING

NOTE 1: 6 BARREL DRIP PAN

TRINITY MARINE -- EX: SMS 30043

0	05/16/23	MRV	DDA	FIX	ISSUED FOR APPROVAL
REV.	DATE	BY	CHK	APP	REVISION DESCRIPTION

KIRBY INLAND MARINE

**HOT OIL
PIPING FLOW DIAGRAM**

KIRBY 30038

SCALE: NONE	REV. 0
PAGE: 3 of 3	