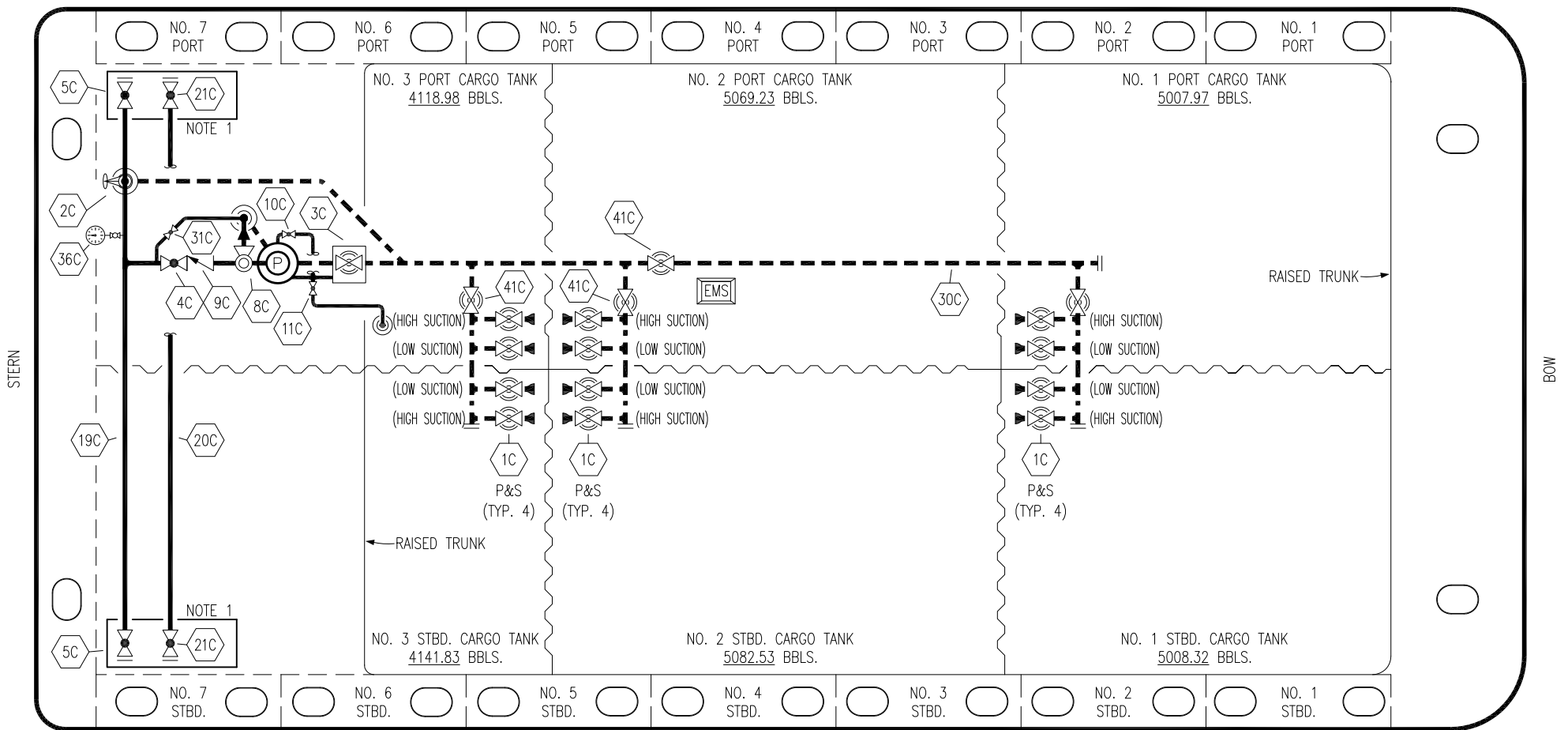


PORT



STERN


BOW

STARBOARD

NO	DESCRIPTION	NO	DESCRIPTION
1C	CARGO TANK VALVE	20C	DUMMY PIPELINE
2C	LOAD VALVE	21C	DUMMY HEADER VALVE
3C	MASTER SUCTION VALVE	30C	CARGO PIPELINE
4C	DISCHARGE VALVE	31C	BYPASS VALVE
5C	HEADER VALVE	36C	PRESSURE GAUGE
8C	RELIEF VALVE	37C	CARGO DROP
9C	CHECK VALVE	41C	SUCTION BLOCK VALVE
10C	BURP VALVE	—	— ABOVE DECK PIPING
11C	BLEED OFF VALVE	---	--- BELOW DECK PIPING
12C	BURP VALVE RETURN TO CARGO TANK		
19C	CARGO HEADER		

NOTE 1: CONTAINMENT P/S

0	09/13/22	MRV	DDA	TB	ISSUED FOR APPROVAL
REV.	DATE	BY	CHK	APP	REVISION DESCRIPTION



KIRBY INLAND MARINE

CARGO

PIPING FLOW DIAGRAM

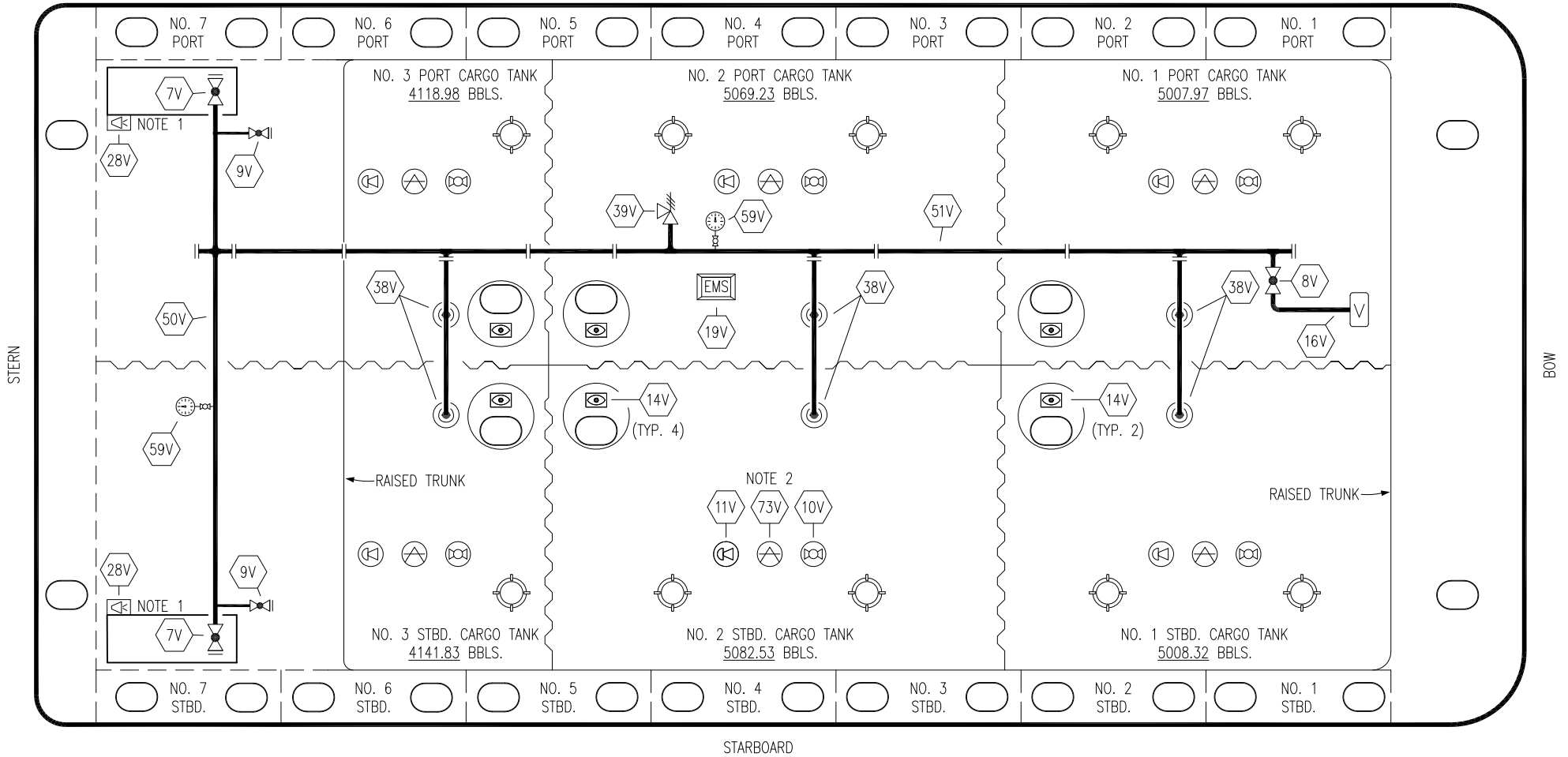
KIRBY 30037

SCALE: NONE

PAGE: 1 OF 2

REV. **0**

PORT



STARBOARD

- | | |
|-----|----------------------------|
| NO | DESCRIPTION |
| 7V | 8" HEADER VALVE |
| 8V | 8" VENT STACK VALVE |
| 9V | DRAIN VALVE |
| 10V | HIGH LEVEL/OVERFILL ALARM |
| 11V | 1-METER GAUGE STICK |
| 16V | VAPOR VENT STACK |
| 19V | EMERGENCY ENGINE SHUT DOWN |
| 28V | DOCK CONNECTION ALARM |

- | | |
|-----|--------------------------|
| NO | DESCRIPTION |
| 38V | 8" VAPOR PENETRATION (⊙) |
| 39V | PRESSURE/VACUUM VALVE |
| 50V | 8" VAPOR HEADER |
| 51V | 8" VAPOR PIPELINE |
| 59V | PRESS/VAC GAUGE |
| 73V | MMC GAUGE POINT |
| — | ABOVE DECK PIPING |

NOTE 2: TYPICAL RIGGING IN EACH TANK
 NOTE 1: CONTAINMENT P/S

0	09/13/22	MRV	DDA	TB	ISSUED FOR APPROVAL
REV.	DATE	BY	CHK	APP	REVISION DESCRIPTION

KIRBY INLAND MARINE 

**VAPOR
PIPING FLOW DIAGRAM**

SCALE: NONE
 PAGE: 2 OF 2

KIRBY 30037 REV. **0**